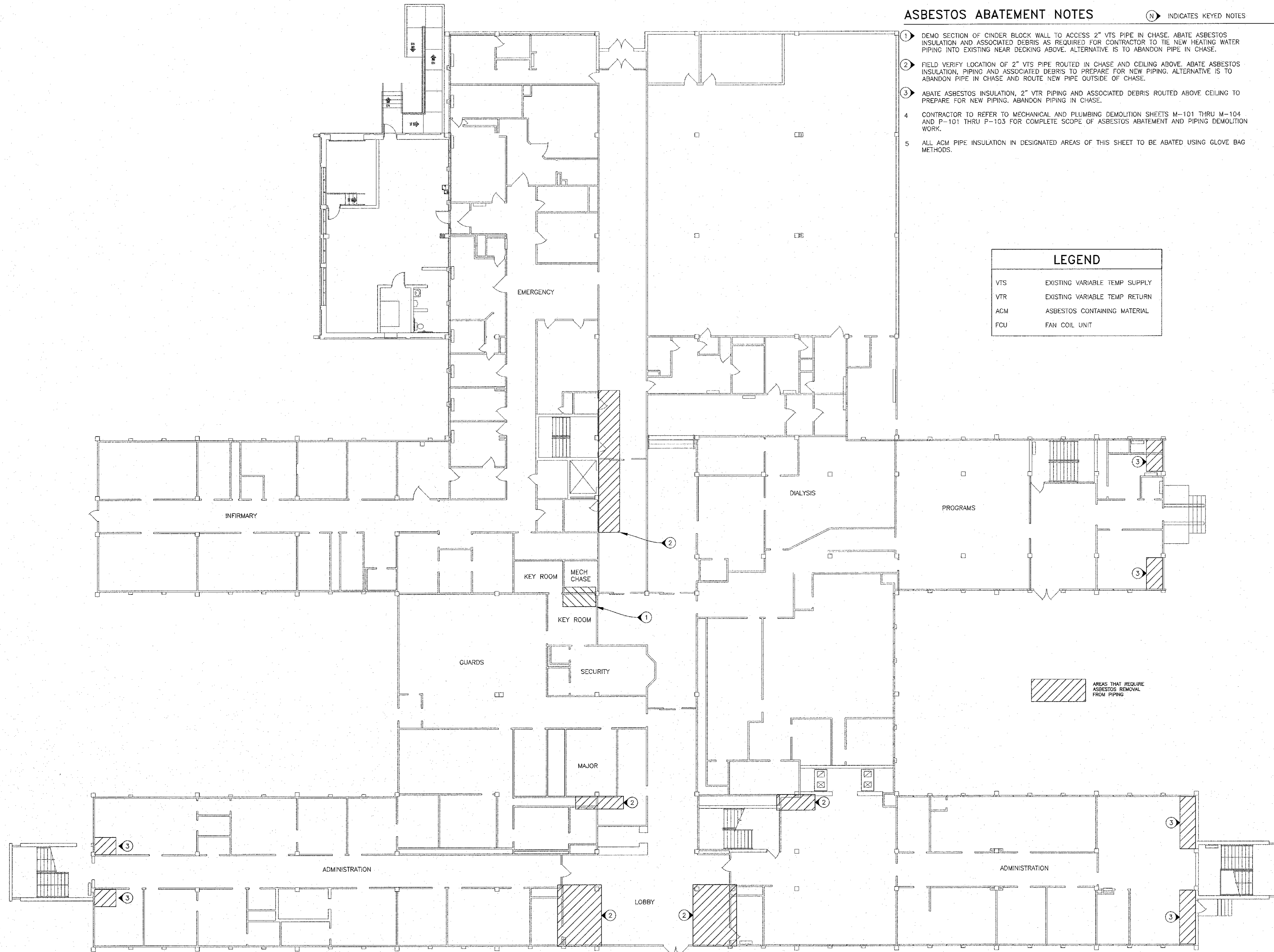


ASBESTOS ABATEMENT NOTES

(N) INDICATES KEYED NOTES

- 1 DEMO SECTION OF CINDER BLOCK WALL TO ACCESS 2" VTS PIPE IN CHASE. ABATE ASBESTOS INSULATION AND ASSOCIATED DEBRIS AS REQUIRED FOR CONTRACTOR TO TIE NEW HEATING WATER PIPING INTO EXISTING NEAR DECKING ABOVE. ALTERNATIVE IS TO ABANDON PIPE IN CHASE.
- 2 FIELD VERIFY LOCATION OF 2" VTS PIPE ROUTED IN CHASE AND CEILING ABOVE. ABATE ASBESTOS INSULATION, PIPING AND ASSOCIATED DEBRIS TO PREPARE FOR NEW PIPING. ALTERNATIVE IS TO ABANDON PIPE IN CHASE AND ROUTE NEW PIPE OUTSIDE OF CHASE.
- 3 ABATE ASBESTOS INSULATION, 2" VTR PIPING AND ASSOCIATED DEBRIS ROUTED ABOVE CEILING TO PREPARE FOR NEW PIPING. ABANDON PIPING IN CHASE.
- 4 CONTRACTOR TO REFER TO MECHANICAL AND PLUMBING DEMOLITION SHEETS M-101 THRU M-104 AND P-101 THRU P-103 FOR COMPLETE SCOPE OF ASBESTOS ABATEMENT AND PIPING DEMOLITION WORK.
- 5 ALL ACM PIPE INSULATION IN DESIGNATED AREAS OF THIS SHEET TO BE ABATED USING GLOVE BAG METHODS.

LEGEND	
VTS	EXISTING VARIABLE TEMP SUPPLY
VTR	EXISTING VARIABLE TEMP RETURN
ACM	ASBESTOS CONTAINING MATERIAL
FCU	FAN COIL UNIT



AREAS THAT REQUIRE ASBESTOS REMOVAL FROM PIPING

1 FIRST FLOOR ASBESTOS REMEDIATION AREAS  
SCALE: 3/32"=1'-0"

OFFICE OF ADMINISTRATION  
DIVISION OF FACILITIES  
MANAGEMENT,  
DESIGN AND CONSTRUCTION

MISSOURI DEPARTMENT  
OF CORRECTIONS

ABATE AND REPLACE  
PIPING VARIOUS

MOBERLY CORRECTIONAL  
CENTER  
5201 S. MORLEY STREET  
MOBERLY, MO

PROJECT # C1601-01  
SITE # 2305  
FACILITY # 27250/27265

REVISION: \_\_\_\_\_  
DATE: \_\_\_\_\_  
REVISION: \_\_\_\_\_  
DATE: \_\_\_\_\_  
REVISION: \_\_\_\_\_  
DATE: \_\_\_\_\_  
ISSUE DATE: 11/06/2017

CAD DWG FILE: MCC-h.dwg  
DRAWN BY: CH/MDS/JDK  
CHECKED BY: JLD  
DESIGNED BY: CJH

SHEET TITLE:  
FIRST FLOOR  
ASBESTOS  
REMEDATION AREAS

SHEET NUMBER:

H-102