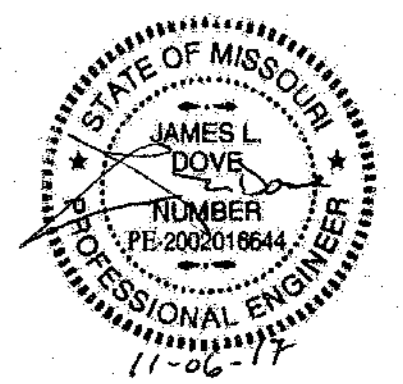


ASBESTOS ABATEMENT NOTES

(N) INDICATES KEYED NOTES

- 1 ABATE ASBESTOS INSULATION AND ASSOCIATED DEBRIS BEHIND CABINETS FOR PIPING ROUTED TO FCU'S SERVING THE PENTHOUSE.
- 2 HEATING WATER PIPING SERVING THE PENTHOUSE IS ROUTED UP CHASE AND ABOVE CEILINGS. ABANDON PIPING IN CHASE AND ABOVE HARD CEILING. ABATE ASBESTOS INSULATION AND ASSOCIATED DEBRIS FOR PIPING ROUTED ABOVE CEILING TO PREPARE FOR NEW PIPE ROUTING.
- 3 CONTRACTOR TO REFER TO MECHANICAL AND PLUMBING DEMOLITION SHEETS M-101 THRU M-104 AND P-101 THRU P-103 FOR COMPLETE SCOPE OF ASBESTOS PIPING INSULATION REMEDIATION WORK.
- 4 ALL ACM PIPE INSULATION IN DESIGNATED AREAS ON THIS SHEET TO BE ABATED USING GLOVE BAG METHODS.

STATE OF MISSOURI
ERIC R. GREITENS,
GOVERNOR



Midwest Engineering & Design
3100 Brown Station Rd. Suite C
Columbia, MO. 65202
(573) 875-0045 Phone
(573) 875-0046 FAX
WWW.MOENGINEERING.COM
Midwest Engineering & Design
Missouri State Certificate of Authority #2010032467

OFFICE OF ADMINISTRATION
DIVISION OF FACILITIES
MANAGEMENT,
DESIGN AND CONSTRUCTION

MISSOURI DEPARTMENT
OF CORRECTIONS

ABATE AND REPLACE
PIPING VARIOUS

MOBERLY CORRECTIONAL
CENTER
5201 S. MORLEY STREET
MOBERLY, MO

PROJECT # C1601-01
SITE # 2305
FACILITY # 27250/27265

REVISION: _____
DATE: _____
REVISION: _____
DATE: _____
REVISION: _____
DATE: _____
ISSUE DATE: 11/06/2017

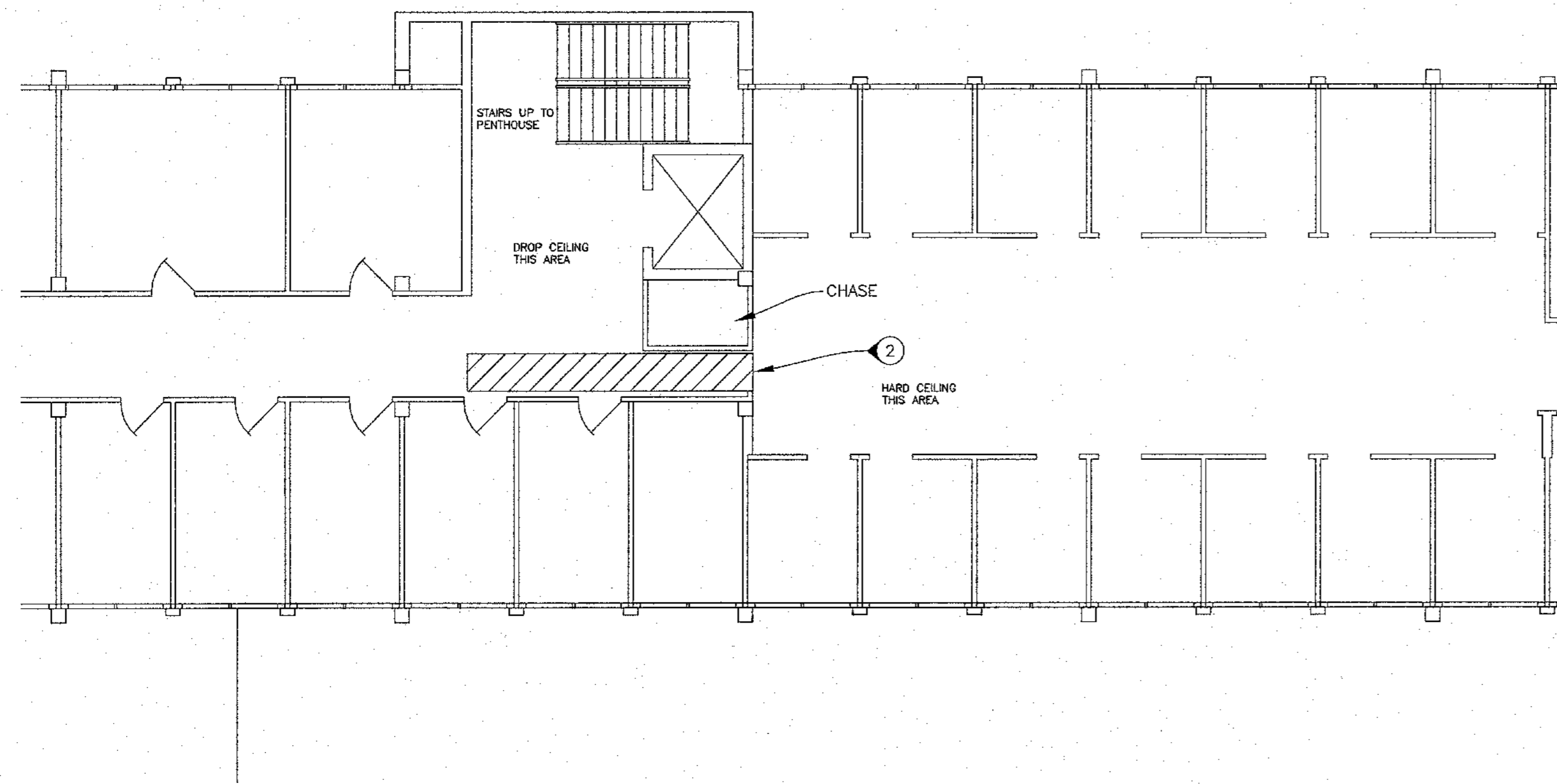
CAD DWG FILE: MCC h.dwg
DRAWN BY: CJH/MDS/JDK
CHECKED BY: JLD
DESIGNED BY: CJH

SHEET TITLE:
ADMIN. BLDG. 2ND FLR
/PENTHOUSE ASBESTOS
REMEDATION AREAS

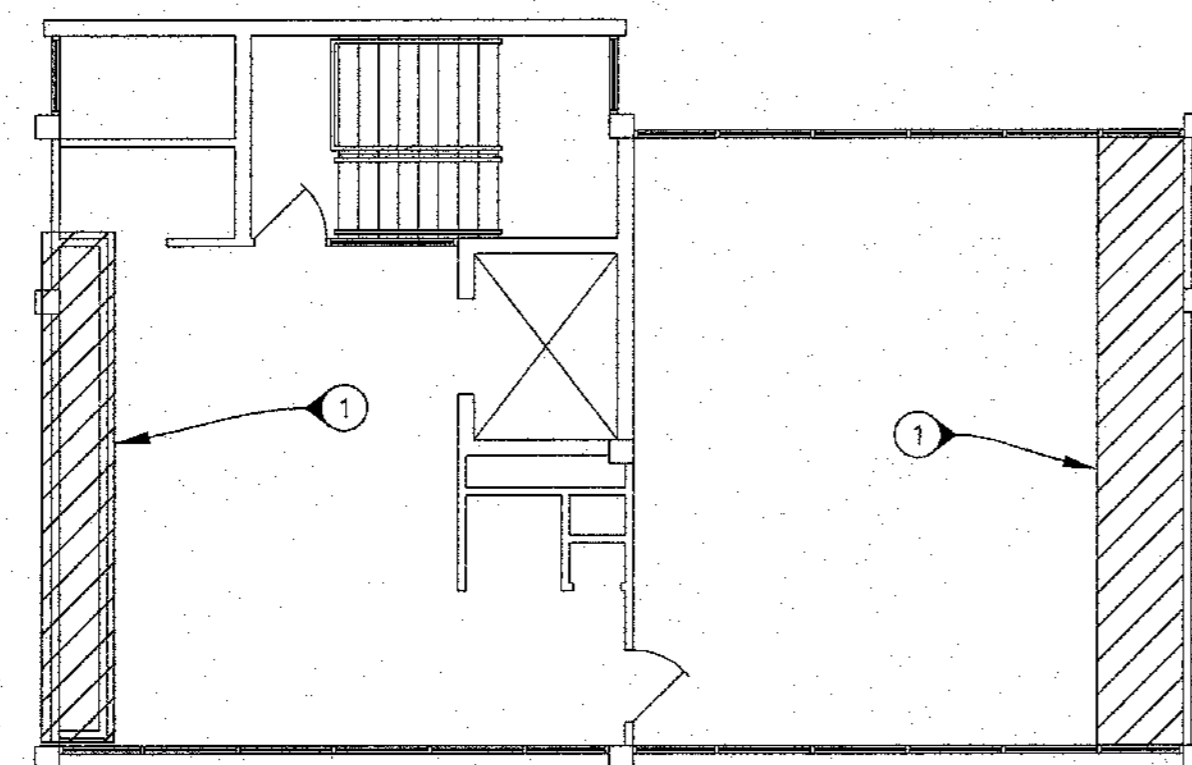
SHEET NUMBER:

H-103

5 OF 30 SHEETS

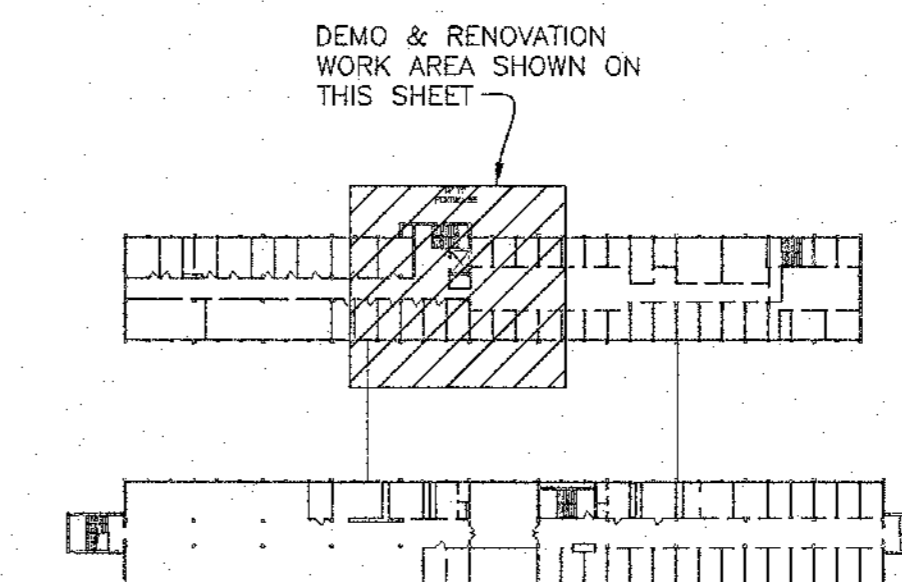
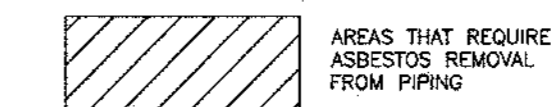


3 SECOND FLOOR ASBESTOS REMEDIATION AREA
SCALE: 1/8"=1' 0"



1 PENTHOUSE FLOOR ASBESTOS REMEDIATION AREA
SCALE: 1/8"=1' 0"

LEGEND	
VTS	EXISTING VARIABLE TEMP SUPPLY
VTR	EXISTING VARIABLE TEMP RETURN
ACM	ASBESTOS CONTAINING MATERIAL
FCU	FAN COIL UNIT



SECOND FLOOR
& PENTHOUSE

2 KEY PLAN
SCALE: NONE