

Midwest Engineering & Design
3100 Brown Station Rd. Suite C
Columbia, MO. 65202
(573) 875-0045 Phone
(573) 875-0046 FAX
WWW.MOENGINEERING.COM
Midwest Engineering & Design
Missouri State Certificate of Authority #2010032487

OFFICE OF ADMINISTRATION
DIVISION OF FACILITIES
MANAGEMENT,
DESIGN AND CONSTRUCTION

MISSOURI DEPARTMENT
OF CORRECTIONS

ABATE AND REPLACE
PIPING VARIOUS

MOBERLY CORRECTIONAL
CENTER
5201 S. MORLEY STREET
MOBERLY, MO

PROJECT # C1601-01
SITE # 2305
FACILITY # 27250/27265

REVISION: _____
DATE: _____
REVISION: _____
DATE: _____
REVISION: _____
DATE: _____
ISSUE DATE: 11/06/2017

CAD DWG FILE: MCC-e.dwg
DRAWN BY: CJH/MDS/JDK
CHECKED BY: JLD
DESIGNED BY: CJH

SHEET TITLE:
ADMIN. BLDG. CRAWL
SPACE AND UPPER
W. WING ELECTRICAL

SHEET NUMBER:

E-101

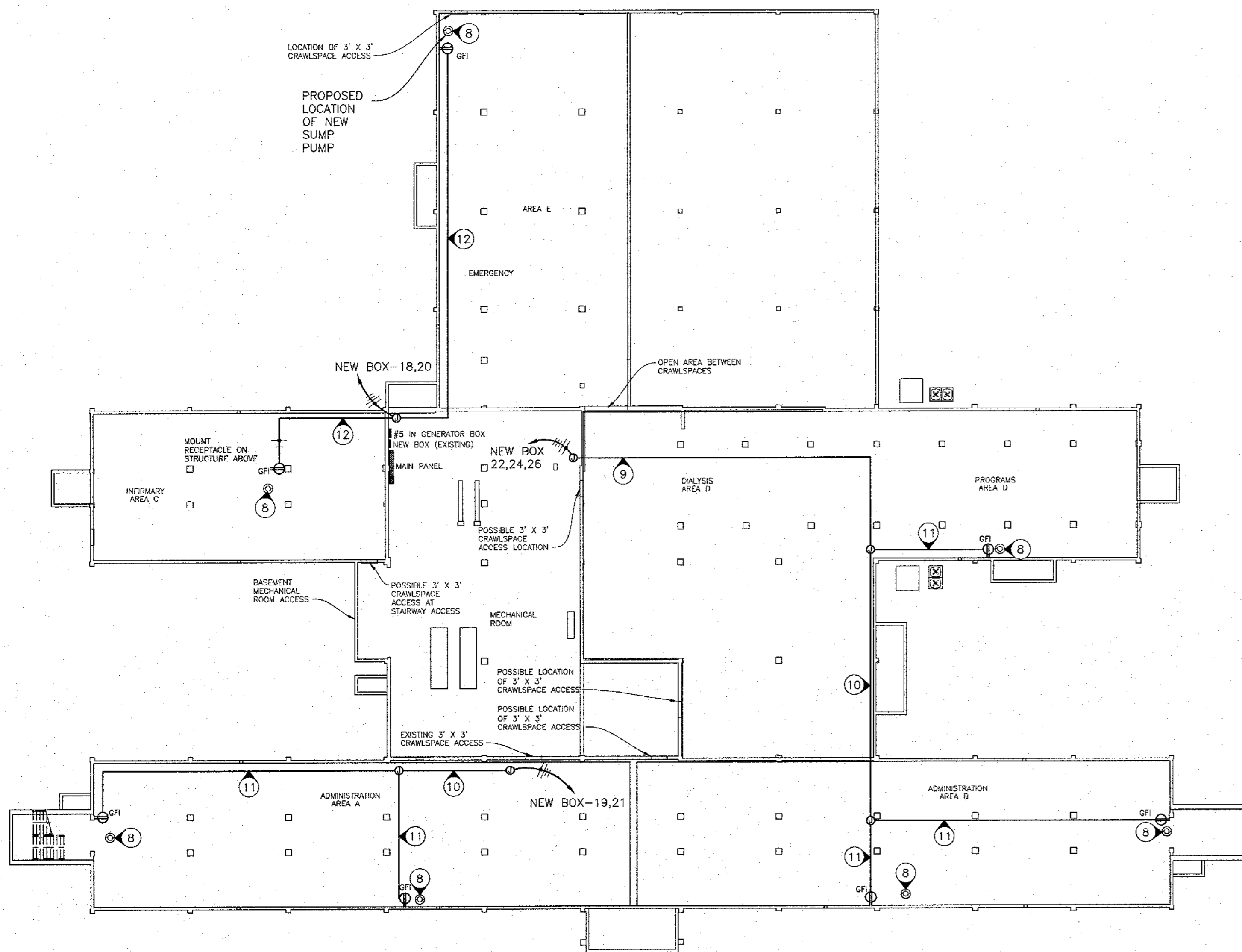
30 OF 30 SHEETS

NOTES

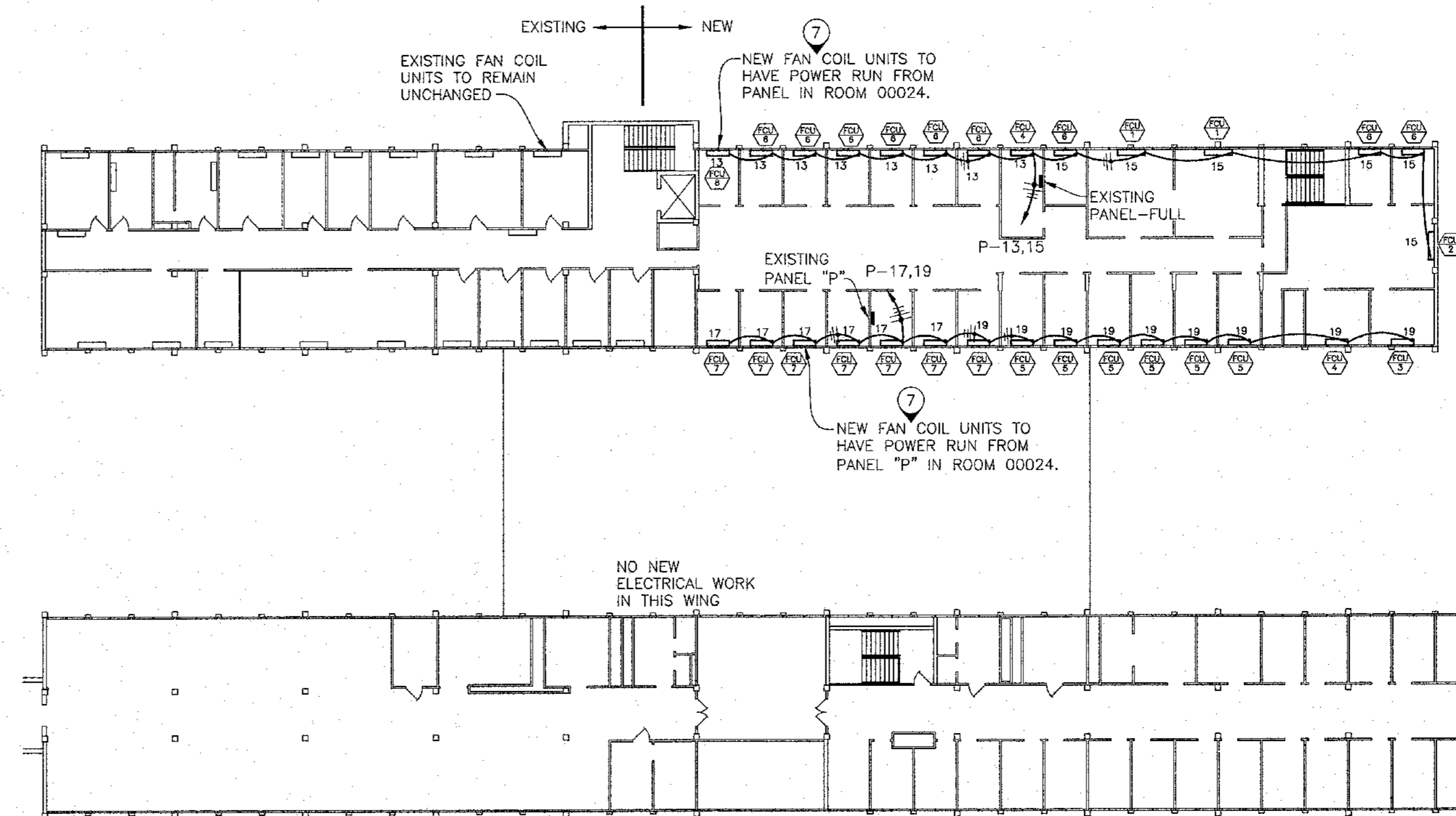
(N) INDICATES KEYED NOTES

- 1 CONTRACTOR SHALL BE RESPONSIBLE FOR ANY ELECTRICAL PERMITTING FEES AND COORDINATION WITH OWNER/ENGINEER ON INSTALLATION INSPECTIONS.
- 2 VERIFY ALL DEVICE LOCATIONS WITH OWNER PRIOR TO ROUGH-IN INSTALLATION, AND GUARANTEE ALL WORKMANSHIP AND MATERIALS FOR ONE YEAR FROM FINAL ACCEPTANCE.
- 3 ALL GENERAL PURPOSE RECEPTACLES SHALL BE 2 POLE 3 WIRE GROUNDING TYPE 5-20R RATED FOR 20 AMPERE. MOUNT 18" AFF UNLESS OTHERWISE NOTED.
- 4 ELECTRICAL CONTRACTOR (ELC) IS TO SUPPLY AND INSTALL ALL CONDUIT AND ALL LINE VOLTAGE WIRING. COORDINATE WITH MECHANICAL CONTRACTOR TO RUN CONDUIT FOR MECHANICAL SYSTEM LOW VOLTAGE WIRING. COORDINATE WITH OTHER DISCIPLINES TO RUN CONDUIT FOR OTHER LOW VOLTAGE WIRING.
- 5 FURNISH AND INSTALL ALL FUSES, BREAKERS, RECEPTACLE, PLATES, ETC. TO COMPLETE THE BRANCH CIRCUITS INDICATED.
- 6 ALL EXPOSED LINE VOLTAGE WIRING SHALL BE PULLED IN PROPERLY SIZED CONDUIT (EMT) WITH APPROVED FITTINGS. ALL CONDUIT IS TO BE RUN NEATLY AND PARALLEL TO BUILDING LINES. INSTALL PULL BOXES ON ANY RUNS THAT REQUIRE MORE THAN 360° WORTH OF BENDS. USE MC CABLE IN CONCEALED AREAS OF BUILDING, SUPPORT PER NEC REQUIREMENTS.
- 7 ELC TO CONNECT THE (29) NEW FAN COIL UNITS TO THE ELECTRICAL PANEL ON THE EAST SIDE OF THE HALL IN ROOM 00024. RUN (2) #12 CU THHN AND (1) CU THHN GRND IN (1) 3/4" CONDUIT TO EACH UNIT AS SHOWN. SUPPLY AND INSTALL 20A SINGLE POLE CIRCUIT BREAKERS IN PANEL FOR FCUs. CLEARLY LABEL PANEL SCHEDULE. COORDINATE WORK WITH MECHANICAL CONTRACTOR.
- 8 ELC TO RUN POWER TO SUMP PUMP SURFACE MOUNTED RECEPTACLE FROM PANEL IN MECHANICAL ROOM MARKED "NEW BOX". COORDINATE EXACT LOCATIONS WITH MECHANICAL CONTRACTOR. SUPPLY AND INSTALL GFI RECEPTACLE FOR EACH PUMP. SUPPLY AND INSTALL NEW 20A/1P CIRCUIT BREAKER FOR EACH HOME RUN. PUMP LOAD IS 7.2AMPS.
- 9 RUN (4) #10 CU THHN AND (1) #10 CU THHN GRND IN (1) 3/4" CONDUIT.
- 10 RUN (3) #10 CU THHN AND (1) #10 CU THHN GRND IN (1) 3/4" CONDUIT.
- 11 RUN (2) #10 CU THHN AND (1) #10 CU THHN GRND IN (1) 3/4" CONDUIT.
- 12 RUN (2) #12 CU THHN AND (1) #12 CU THHN GRND IN (1) 3/4" CONDUIT.

ELECTRICAL LEGEND	
	HOME RUN—SHORT STROKES INDICATE PHASE OR SWITCHED WIRES, LONG STROKE INDICATE NEUTRAL, LONG WITH DOT INDICATE GROUND
	NEW SUMP PUMP MOTOR
	EXISTING SURFACE MOUNTED PANELBOARD
	NEW FAN COIL UNIT
	EXISTING FAN COIL UNIT
	DUPLEX RECEPT.— 120V GROUND FAULT TYPE
	DUPLEX RECEPT.— 120V GFI PROTECTED



1 ADMINISTRATIVE BUILDING CRAWL SPACE ELECTRIC TO SUMP PUMP AREAS
SCALE: 1"=20'-0"



2 SECOND FLOOR ELECTRICAL TO FAN COIL UNITS
SCALE: 1"=20'-0"