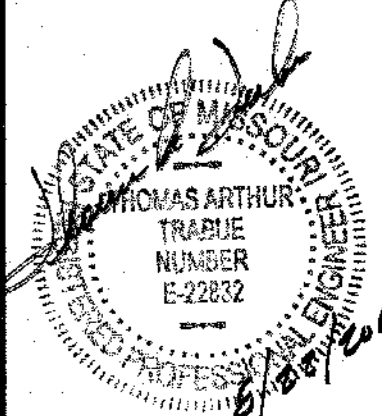


Revisions	No.	Date	Description



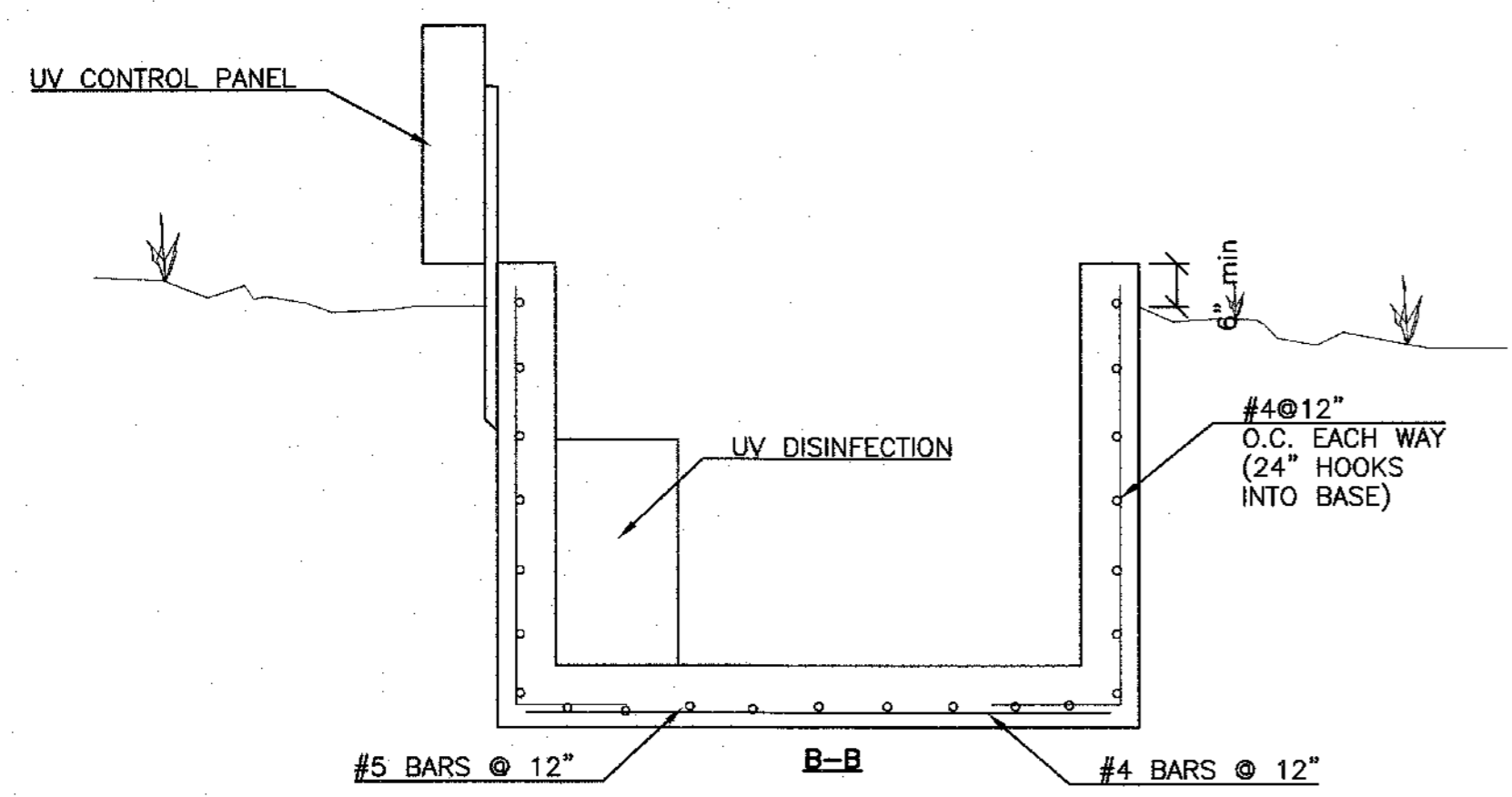
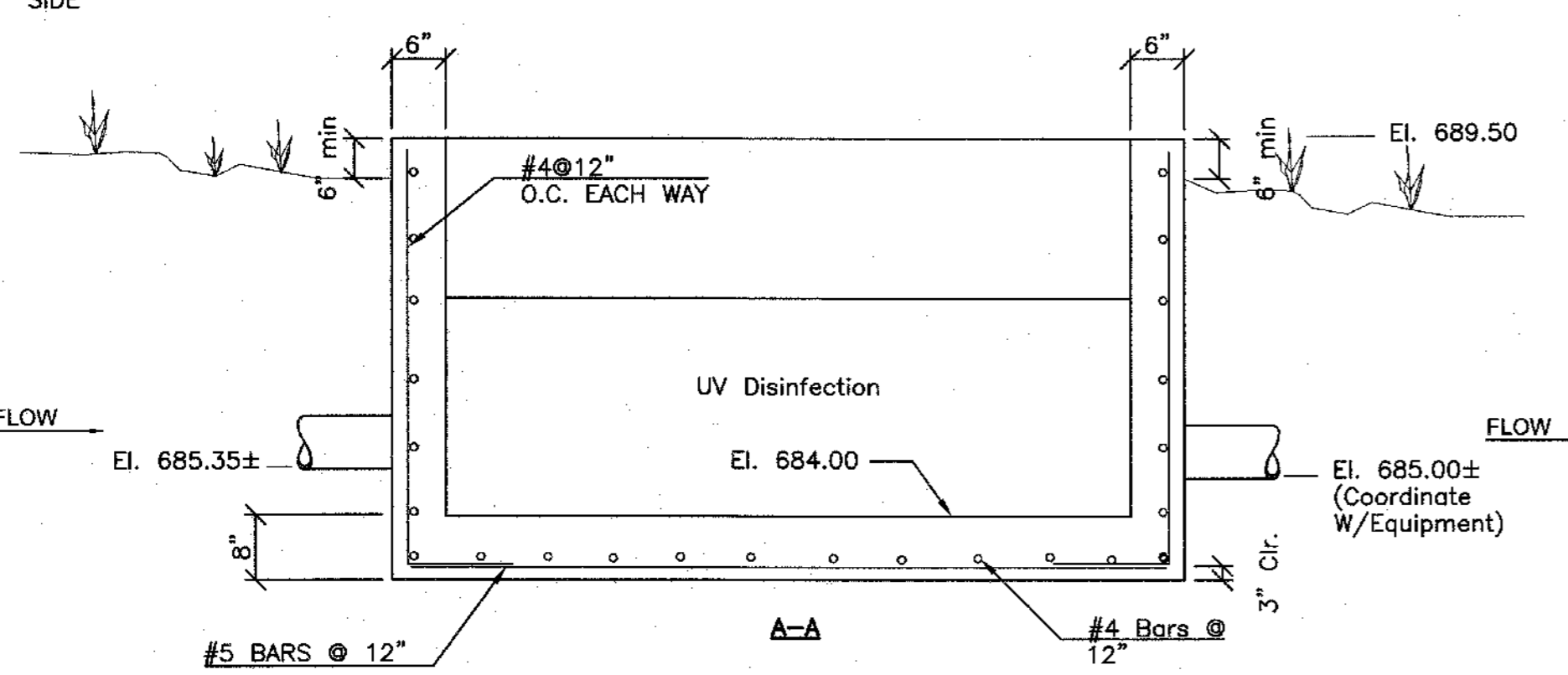
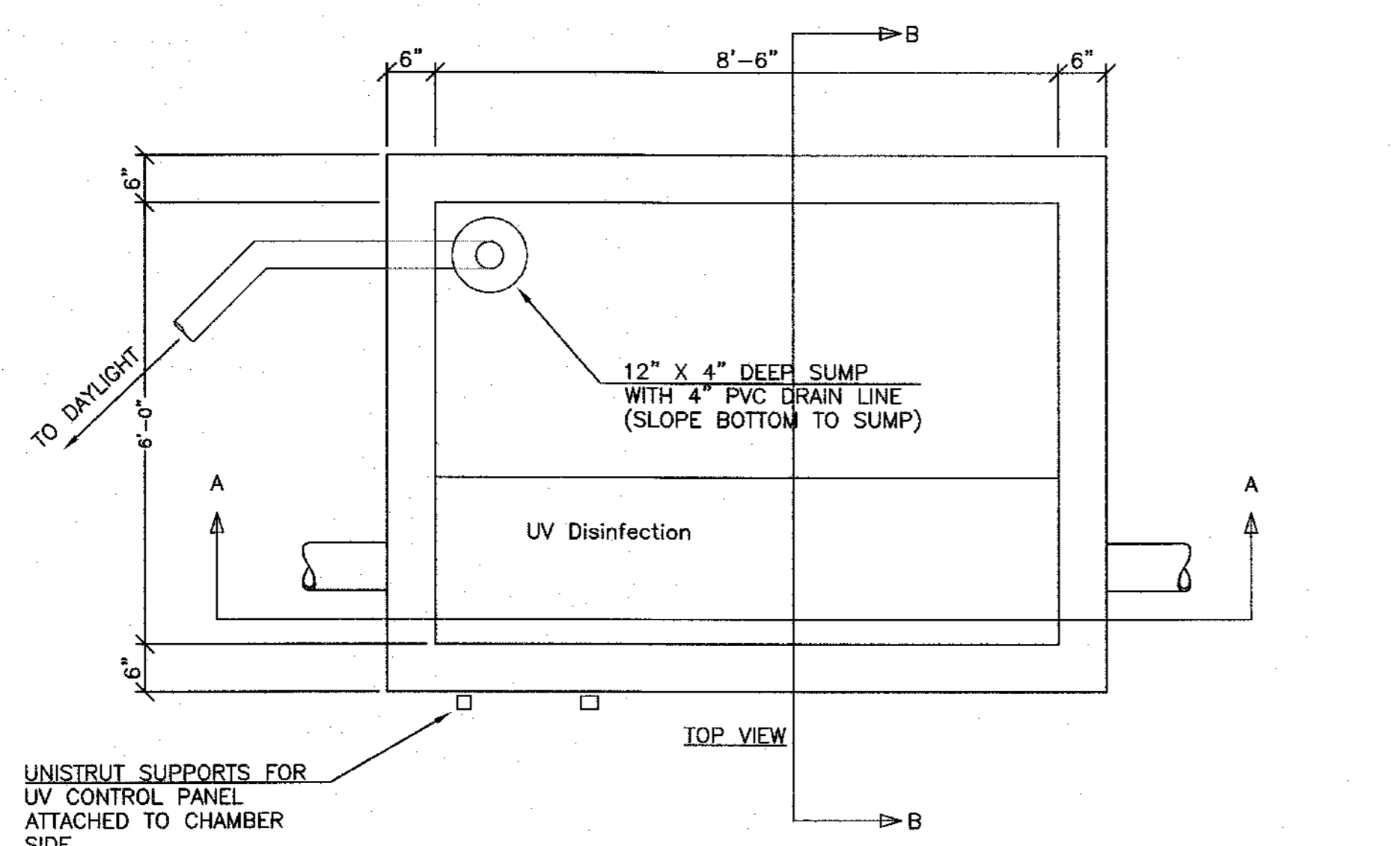
Thomas A. Trabue  
MO-E 22832  
Expires: 12-31-2018

**McCLURE**  
ENGINEERING CO.  
building strong communities  
1901 Pennsylvania Drive  
Columbia, MO 65202  
P 573-814-1568  
F 573-814-1128  
MISSOURI CERTIFICATE OF  
AUTHORITY NO. E-2006023253  
EXPIRES: DECEMBER 31, 2018

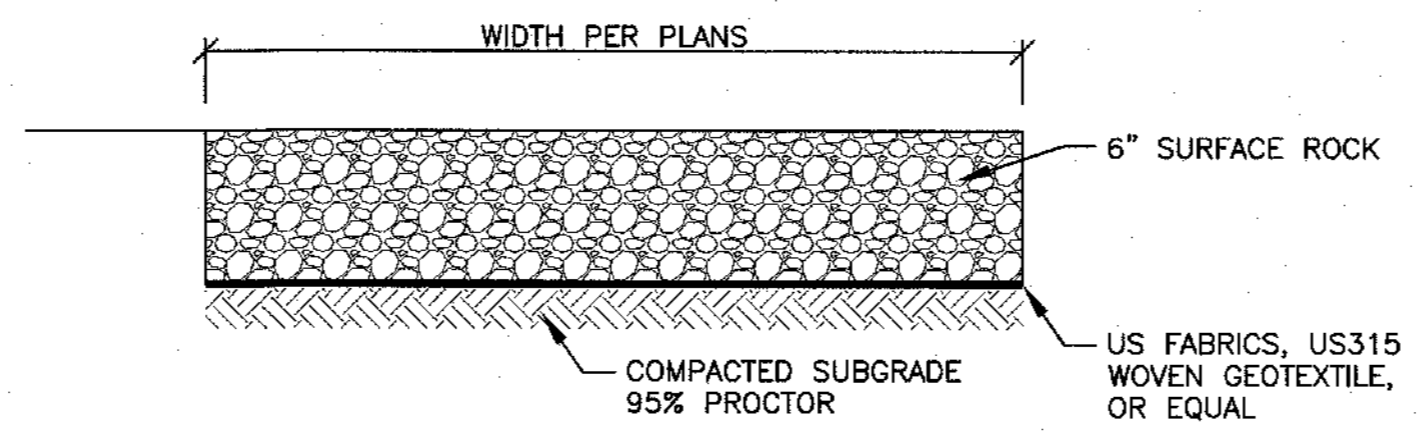
City of Sweet Springs  
**Wastewater Treatment  
Improvements**  
Details

Client Proj # 007380  
THInc Proj # 007380  
Engineer: TPW  
Designer: TPW  
Drafter: GRK  
Plotted:

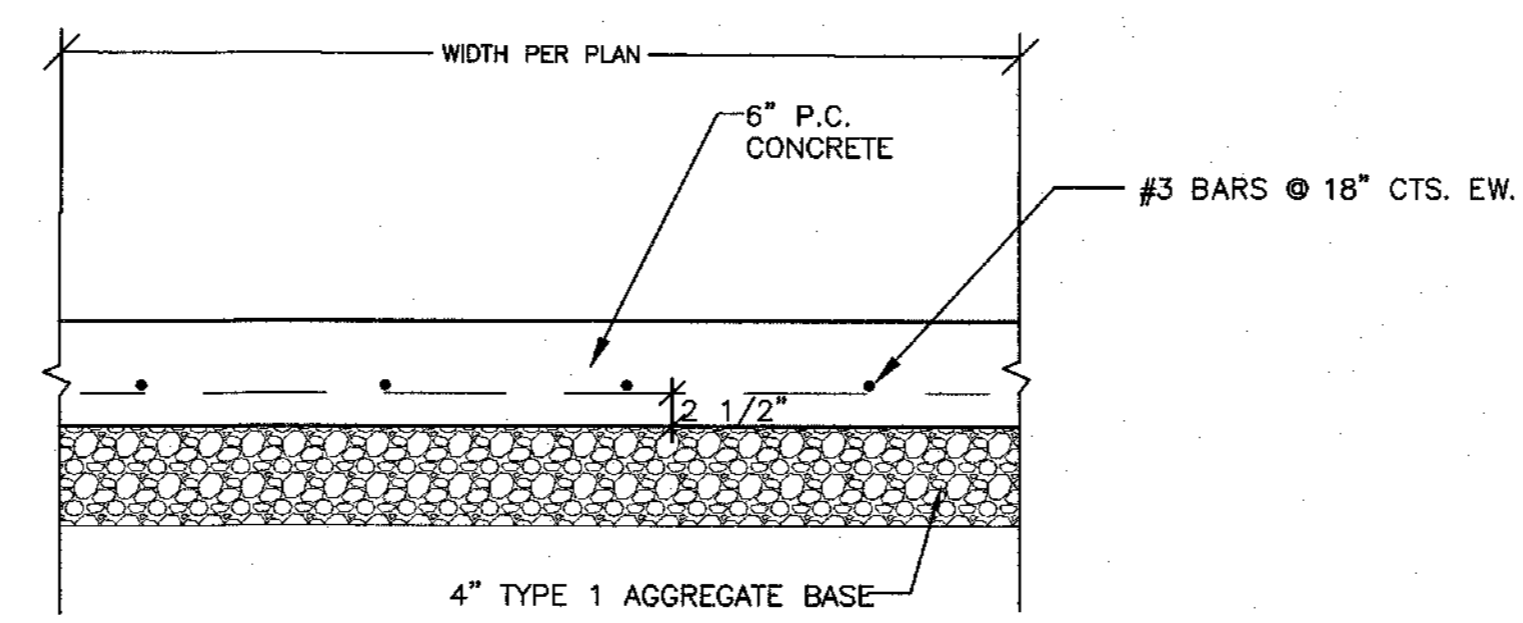
DWG. **C504**  
SHT. 14 OF 15



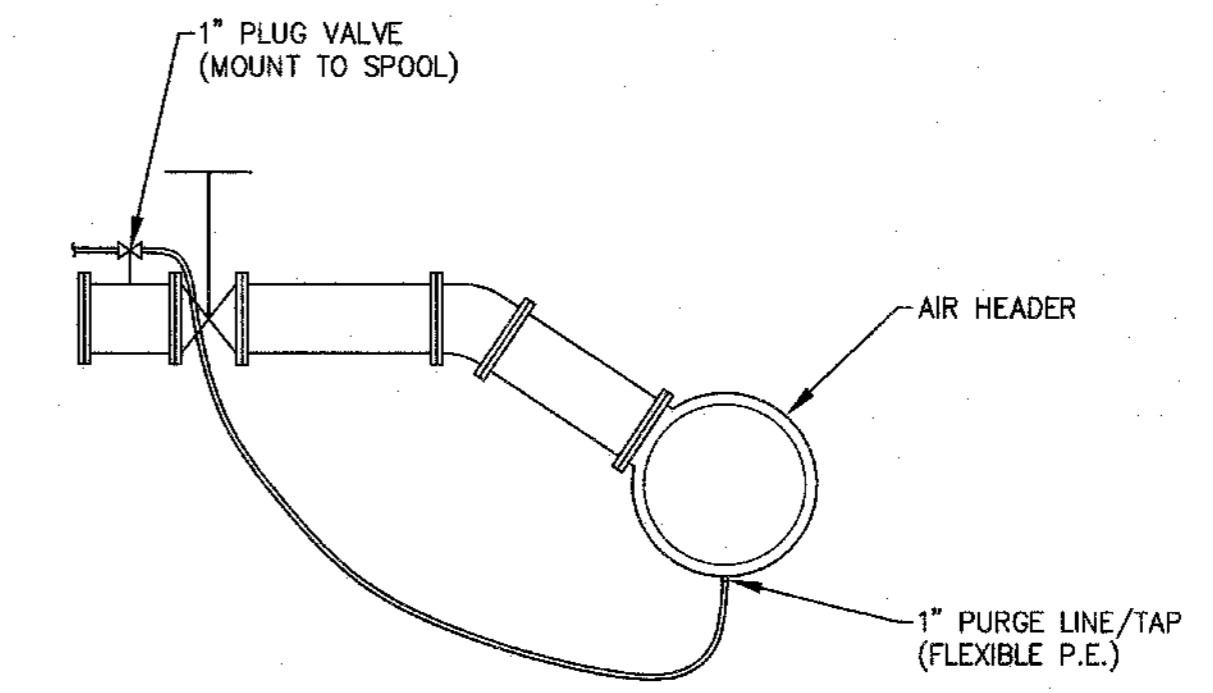
**1 UV DISINFECTION CHAMBER**  
C504 N.T.S.  
CHAMBER CONFIGURATION MAY VARY FOR DIFFERING APPROVED EQUIPMENT. FULL SHOP DRAWING SUBMITTALS ARE REQUIRED FOR APPROVAL FOR ANY CHAMBER PROVIDED.  
CHAMBER MAY BE PRECAST OR CAST-IN-PLACE.



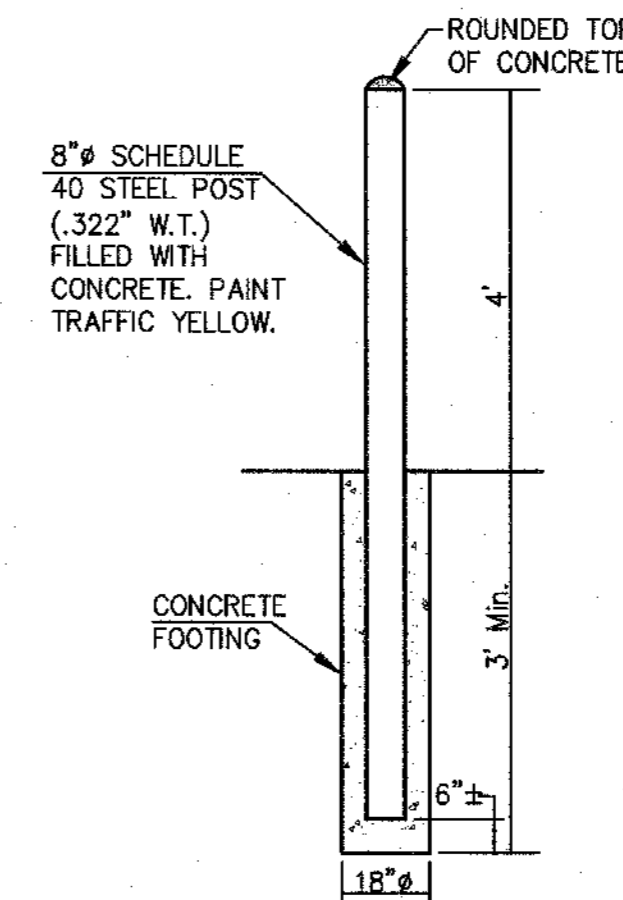
**2 GRAVEL PAVEMENT**  
C504 N.T.S.



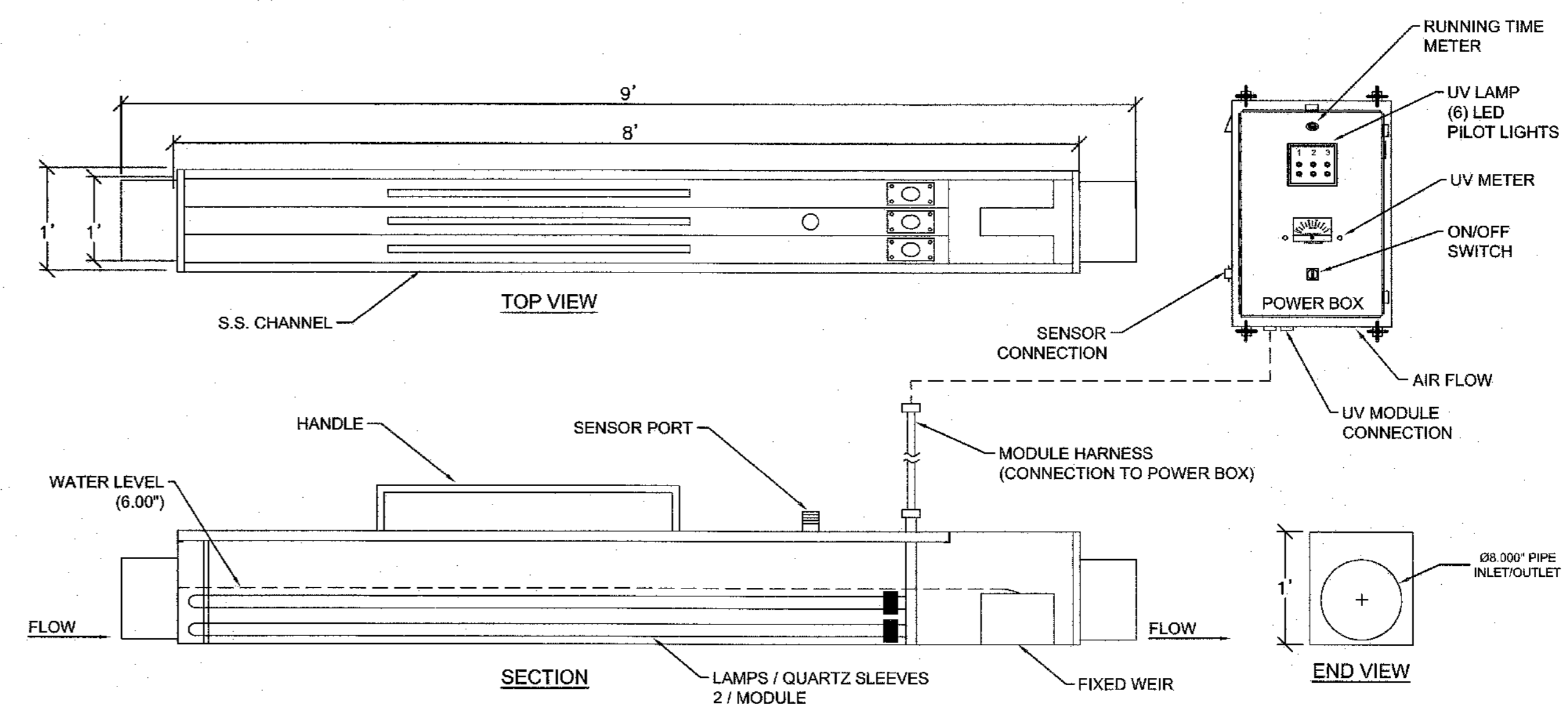
**3 P.C.C. BLOWER PAD**  
C504 N.T.S.



**5 CONDENSATE BLOW OFF**  
C504 N.T.S.



**6 BOLLARD DETAIL**  
C504 N.T.S.



- SPECIFICATIONS:**
1. TYPE OF LIQUID: WASTE WATER
  2. AVERAGE FLOW RATE: 105 GPM (150,000 GPD)
  3. HEAD LOSS: LESS THAN 4" AT RATED FLOW
  4. TRANSMISSION: 65%
  5. QUALITY: 30 BOD / 30 TSS MAX.
  6. ELECTRICAL: 120 VAC / 60 HZ - 3.2 AMPS  
220 VAC / 50 HZ - 1.7 AMPS
  7. POWER SUPPLY BOX: FAN COOLED
  8. REDUNDANT OPERATION REQUIRED. SYSTEM CAPABLE OF RATED TREATMENT PERFORMANCE WITH ANY SINGLE UNIT OUT OF SERVICE.

**4 UV DISINFECTION SYSTEM**  
C504 N.T.S.

P:\Civil - Structural\7380 - Sweet Springs - WW Improvements\DWG\7380-Cov. Leg. Det.dwg