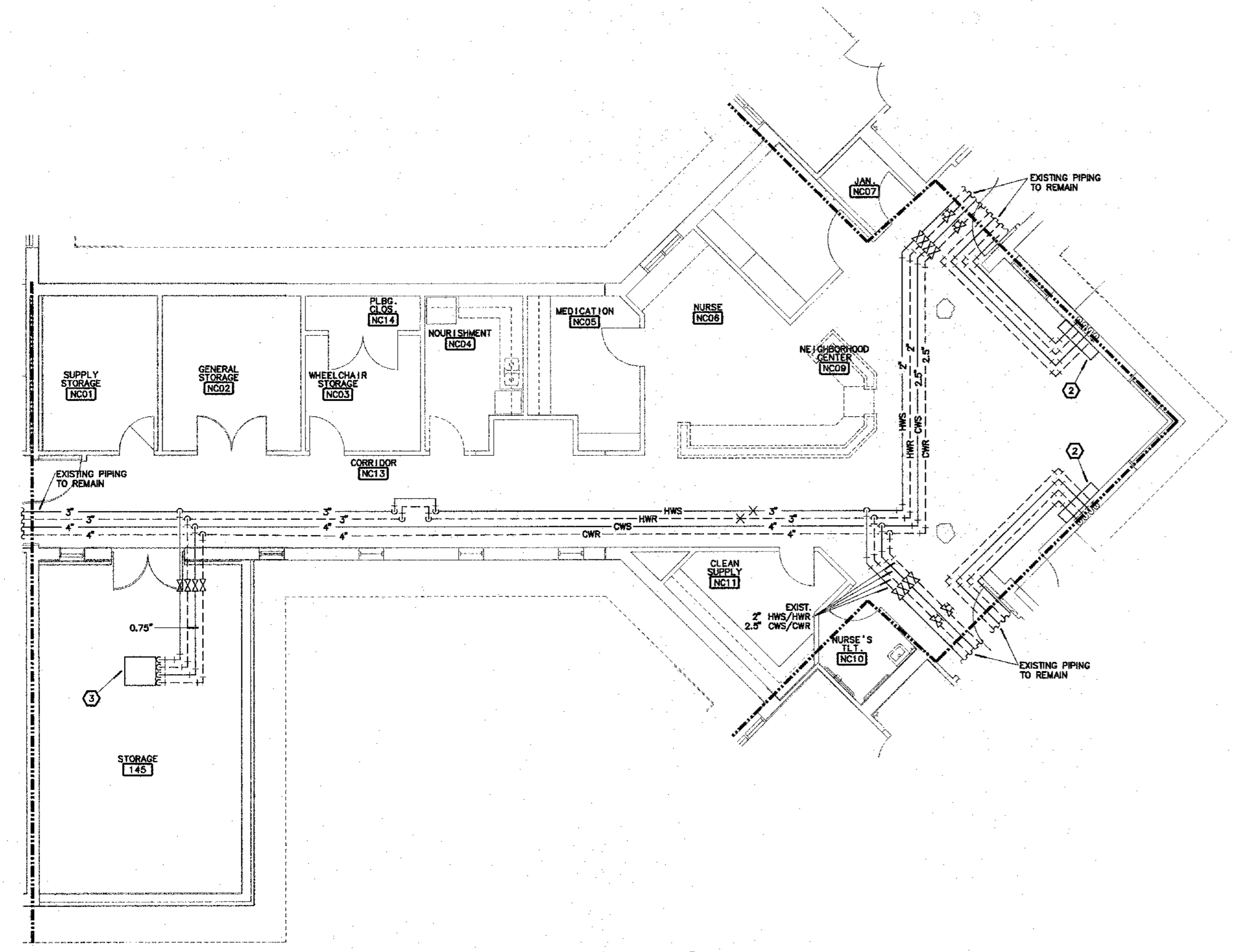
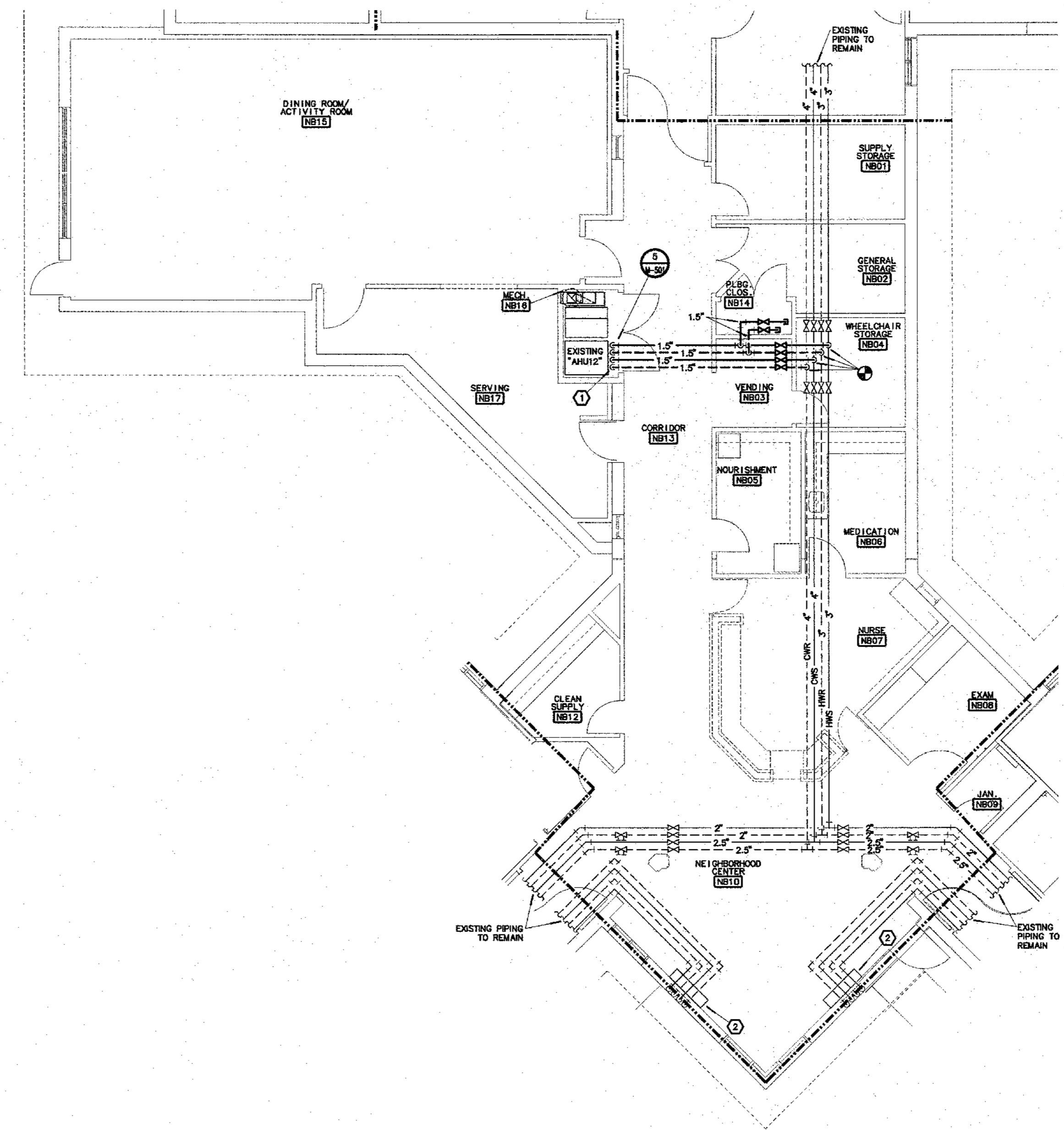


3
M-116
**NURSING CORE A
HYDRONIC IMPROVEMENT PLAN**
SCALE: 1/8"=1'-0"
NORTH



2
M-116
**NURSING CORE C
HYDRONIC IMPROVEMENT PLAN**
SCALE: 1/8"=1'-0"
NORTH



1
M-116
**NURSING CORE B
HYDRONIC IMPROVEMENT PLAN**
SCALE: 1/8"=1'-0"
NORTH

Consulting Engineers
 3333 East Hatfield, Suite 1000
 Springfield, Missouri 65804
 Phone: 417.883.0000
 Fax: 417.883.0009
 info@mfec.com

mfec
 Malone Finkbeiner Eckhardt & Collins, Inc.

NOTES:

- EXISTING AIR HANDLING UNIT TO REMAIN. REMOVE AND REPLACE PIPING AND VALVING. REMOVE AND REPLACE 1.5" HWS, 1.5" CWS AND 1.5" CWR BRANCH PIPING BACK TO MAIN CONNECTION AND REPLACE ALL DIELECTRIC FITTINGS. PROVIDE NEW SHUT-OFF VALVES AT MAIN PIPING CONNECTION AND RECONNECT TO MAIN PIPING. FIELD VERIFY EXISTING CONDITIONS AND LOCATION OF CONNECTIONS TO ALL EXISTING PIPING CONNECTIONS. PROVIDE ALL REQUIRED ADJUSTMENTS TO EXISTING PIPING TO ACCOMMODATE AIR HANDLING UNIT.
- EXISTING VERTICAL 4-PIPE FAN COIL UNIT TO REMAIN.
- EXISTING HORIZONTAL 4-PIPE FAN COIL UNIT TO REMAIN.

GENERAL NOTES:

- FOR ALL MECHANICAL QUESTIONS DURING BIDDING OR DURING CONSTRUCTION, CONTACT SCOTT VANDOREN AT MALONE FINKBEINER ECKHARDT AND COLLINS, INC. (417-881-0020)
- MECHANICAL HOT WATER HEATING SYSTEM SHALL BE DRAINED DOWN DURING THE COOLING SEASON. BOILER SYSTEM, HOT WATER PUMPS, AND ALL HOT WATER PIPING CHANGES SHALL BE PERFORMED DURING THE COOLING SEASON. ALL WORK SHALL BE PERFORMED, STARTING JUNE 1, 2018 AND SUBSTANTIALLY COMPLETE BY AUGUST 31, 2018.
- MECHANICAL CHILLED WATER AND CONDENSER WATER SYSTEMS SHALL BE DRAINED DOWN DURING THE HEATING SEASON. CHILLED WATER PUMPS, CONDENSER WATER PUMPS AND ALL CHILLED WATER PIPING CHANGES SHALL BE PERFORMED DURING THE HEATING SEASON. ALL WORK SHALL BE PERFORMED, STARTING DECEMBER 1, 2017 AND SUBSTANTIALLY COMPLETE BY FEBRUARY 28, 2018.
- CONTRACTOR SHALL COORDINATE WITH THE HVAC WATER TREATMENT CONTRACTOR PER SPECIFICATIONS SECTION 232500. ALL WATER TREATMENT SHALL BE COMPLETED BY THE SYSTEM SUBSTANTIAL COMPLETION DATE. SYSTEM, ADJUST AND BALANCE REPORT FOR THE WATER SYSTEMS SHALL BE COMPLETE AND APPROVED BY THE ENGINEER, PRIOR TO THE SUBSTANTIAL COMPLETION DATE OF EACH WATER SYSTEM.

Missouri State Certificate of Authority #001075
PROFESSIONAL SEAL
 1736 East Sunshine, Suite 417
 Springfield, Missouri 65804
 417.862.0558
 Fax: 417.862.3265
 e-mail: architect@esterlyandschneider.com
 certificate of authority #000718

ESTERLY & SCHNEIDER ASSOCIATES, INC.
AIA architects & planners
 COMM. # 4092

OFFICE OF ADMINISTRATION
 DIVISION OF FACILITIES
 MANAGEMENT,
 DESIGN AND CONSTRUCTION

DEPARTMENT OF
 PUBLIC SAFETY,
 MISSOURI VETERANS
 COMMISSION

HVAC REPLACEMENT
 PROJECT

MISSOURI VETERANS
 HOME

620 N. JEFFERSON
 ST. JAMES, MO 65559

PROJECT # U1503-03
 FAI # 29-051
 SITE # 4700
 FACILITY # 55019

REVISION: _____
 DATE: _____
 REVISION: _____
 DATE: _____
 REVISION: _____
 DATE: _____
 ISSUE DATE: 10-27-17

CAD DWG FILE: M-116.DWG
 DRAWN BY: JMO
 CHECKED BY: CKC
 DESIGNED BY: JMO

SHEET TITLE:

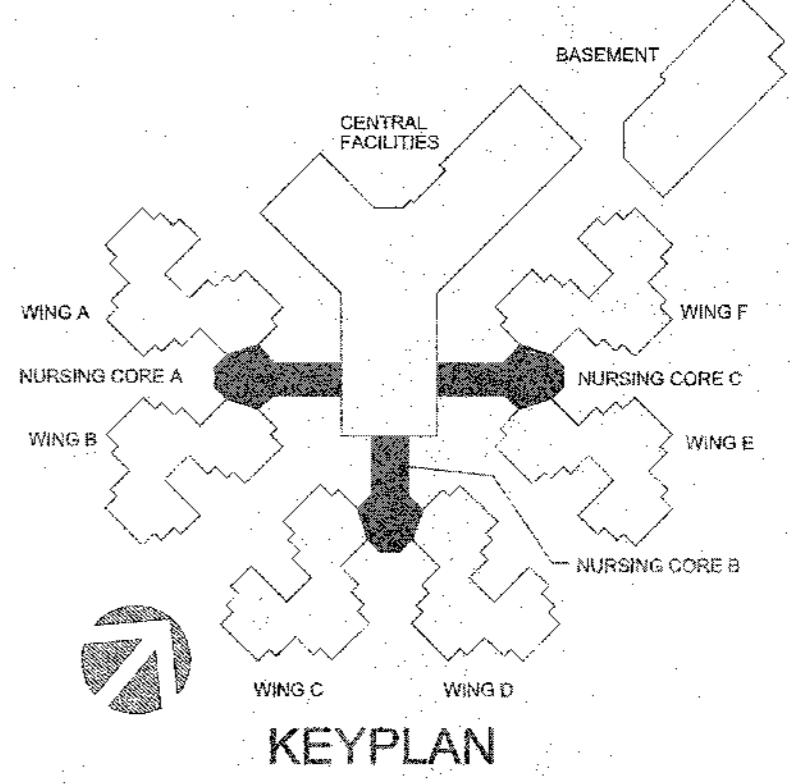
HYDRONIC PLANS

SHEET NUMBER:

M-116

20 OF 41 SHEETS

10-27-17



M:\SAP\116\116-23 Oct 2017 - 3:30 pm