

Notes:

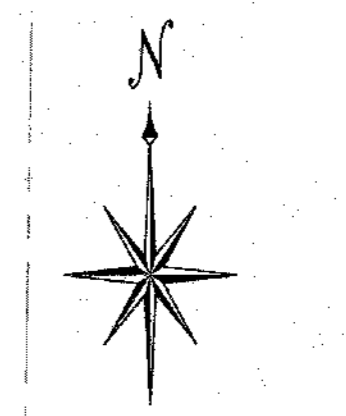
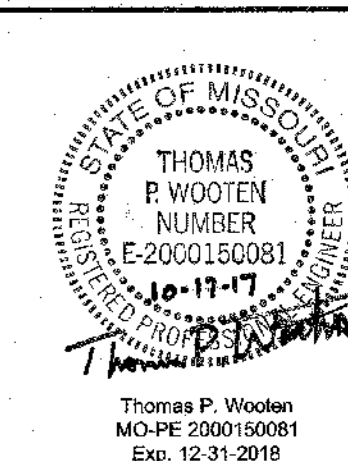
1. Erosion Control Plan see sheet C0.04
2. Contractor to provide construction barrier around open excavations as necessary for protection of public.
3. Contractor to stage work to maintain emergency egress from door/stairway. Provide temporary surfacing as necessary.
4. Concrete Washout Area
 - 4.1. Location Must be Noted on Erosion Control Plan the is Maintained Onsite
 - 4.2. Adhere to All Best Management Practices to Control Discharge from Washout Area

Key Notes:

- ① Electric Meter and Pole to be Removed once New Transformer is Operational(See MEP for Phasing)
- ② Trees and Brush to be Removed in Preparation of Area to be Filled/ Regraded
- ③ Buildings/Sheds to be Removed
- ④ Fence and Posts to be Removed
- ⑤ Cap Waterline and Abandon in Place, Remove Yard Hydrants/Water Fountains
- ⑥ Not Used
- ⑦ Inlet to be grade adjusted
E = 762.30, TOC = 762.80
Curb and Pavement to be Removed
- ⑧ Light Pole and Base to be Removed/Salvaged by

Others (See MEP For Electrical)

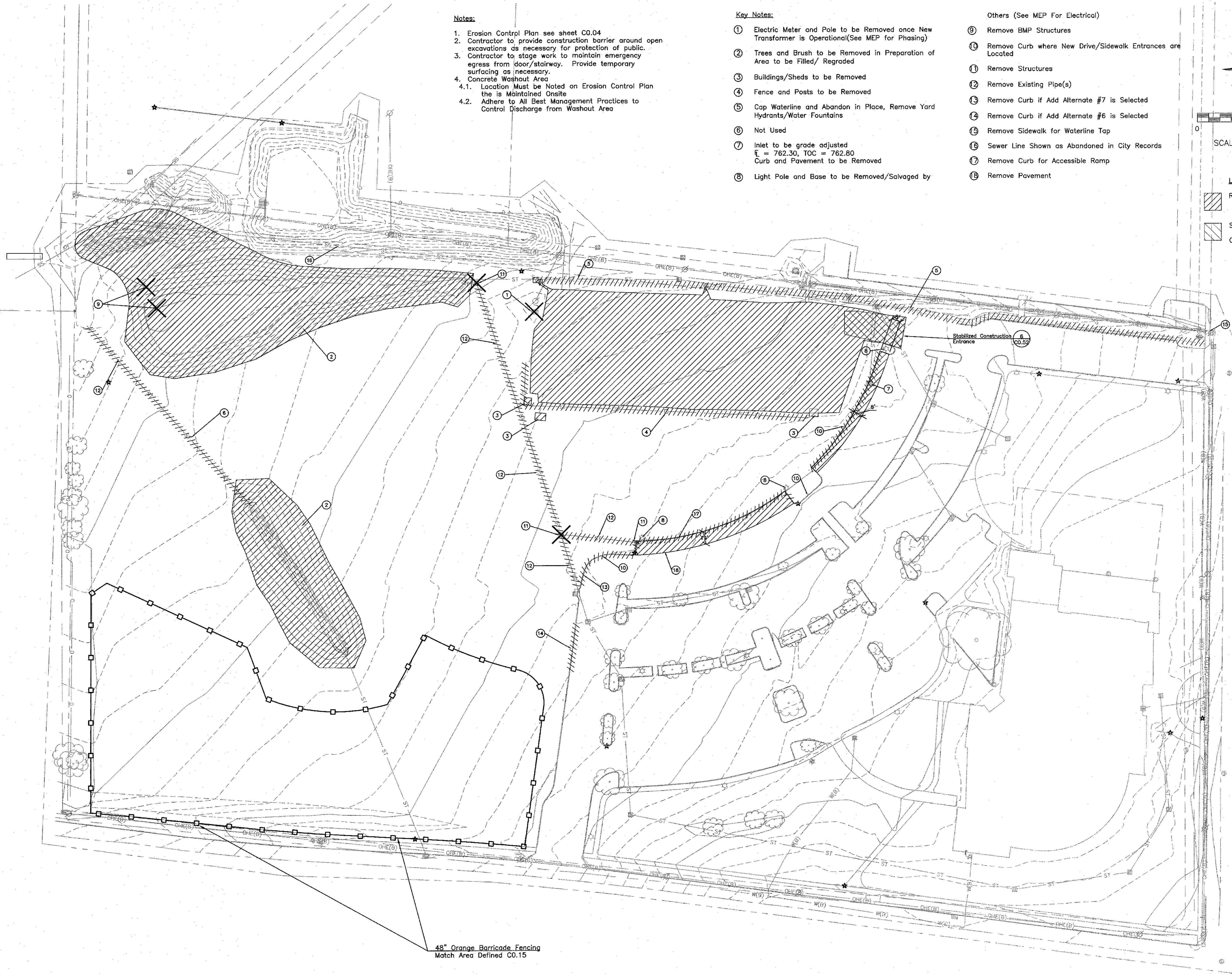
- ⑨ Remove BMP Structures
- ⑩ Remove Curb where New Drive/Sidewalk Entrances are Located
- ⑪ Remove Structures
- ⑫ Remove Existing Pipe(s)
- ⑬ Remove Curb if Add Alternate #7 is Selected
- ⑭ Remove Curb if Add Alternate #6 is Selected
- ⑮ Remove Sidewalk for Waterline Tap
- ⑯ Sewer Line Shown as Abandoned in City Records
- ⑰ Remove Curb for Accessible Ramp
- ⑱ Remove Pavement



SCALE: 1"=50'

Legend:

- Removals - See Key Notes
- Stabilized Construction Entrance
- Concrete Washout Area



48" Orange Barricade Fencing
Match Area Defined C0.15

City of Columbia Parks and Recreation Department
Clary Shy Agriculture Park
 1751, 1769, & 1857 WEST ASH ST
 COLUMBIA, MO 65203

ISSUE FOR PERMIT
 October 19, 2017
 REVISION DATE

DEMOLITION PLAN

C0.05

SOA PROJECT 16052

If you must print this drawing, please recycle.

soa
 Architecture
 Interior Design
 Planning
 Sustainability
 2801 Woodard Drive, Suite 103
 Columbia, MO 65202
 573.443.1407
 www.soa-inc.com

Missouri Certificate of Authority Number: 000826

MEP ENGINEER

 2801 Woodard Drive, Suite 105
 Columbia, MO 65202
 573.443.1407
STRUCTURAL ENGINEER

 1901 Pennsylvania Dr,
 Columbia, MO 65202
 573.814.1408
 MO COA No. E-2006023253
 Exp. December, 31 2018