

TIMOTHY P. EARNEY, P.E.
#E-2011000879
EXPIRES 12/31/17



Architecture

Interior Design

Planning

Sustainability

2801 Woodard Drive, Suite 103
Columbia, MO 65202
573.443.1407

www.soa-inc.com

Missouri Certificate of
Authority Number: 000826

MEP ENGINEER:



2801 Woodard Drive, Suite 105
Columbia, MO 65202
573.443.1407

CIVIL & STRUCTURAL:



1901 Pennsylvania Dr.
Columbia, MO 65202
573.814.1568
MO Corp No. 2006023253

City of Columbia Parks and
Recreation Department
Clary Shy Agriculture Park
1751, 1769, & 1857 WEST ASH ST
COLUMBIA, MO 65203

ISSUE FOR PERMIT

October 19, 2017

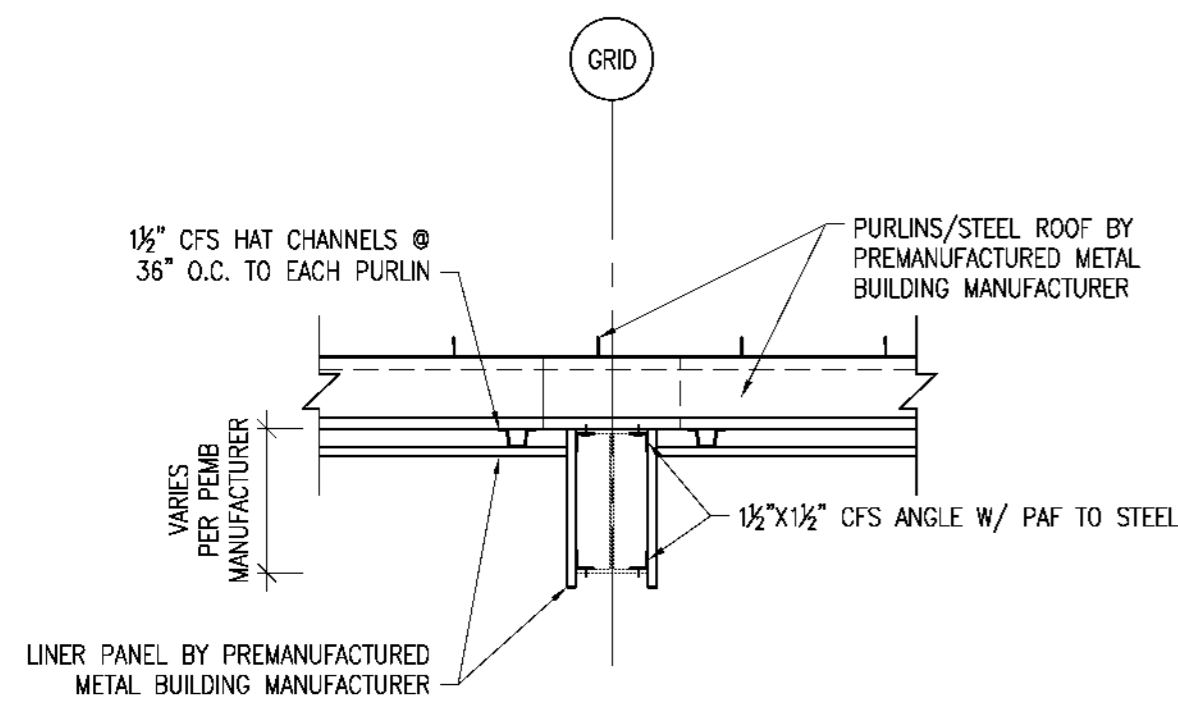
REVISION DATE

FARMER'S MARKET
BUILDING DETAILS

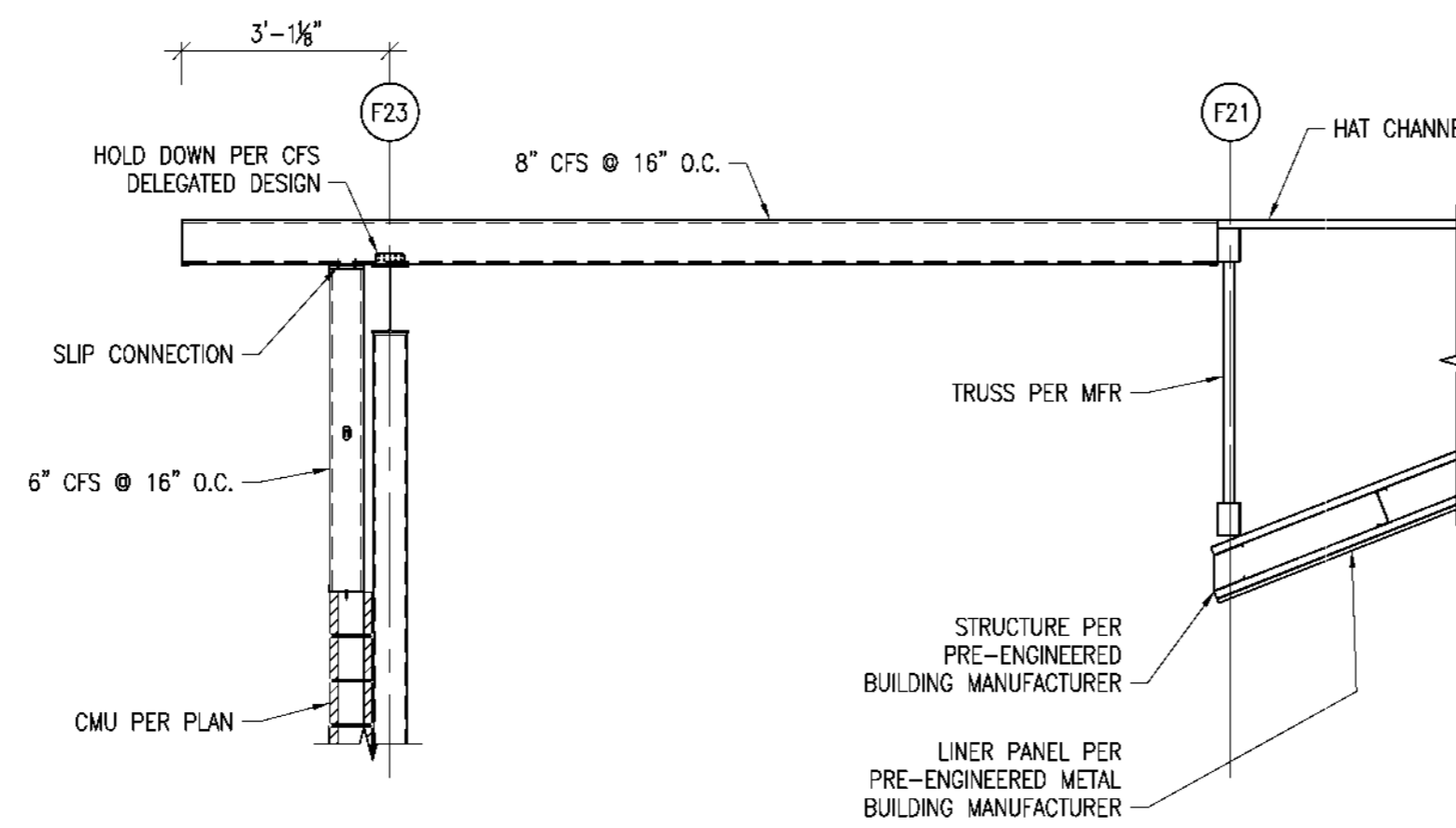
S1.52

SOA PROJECT 16052

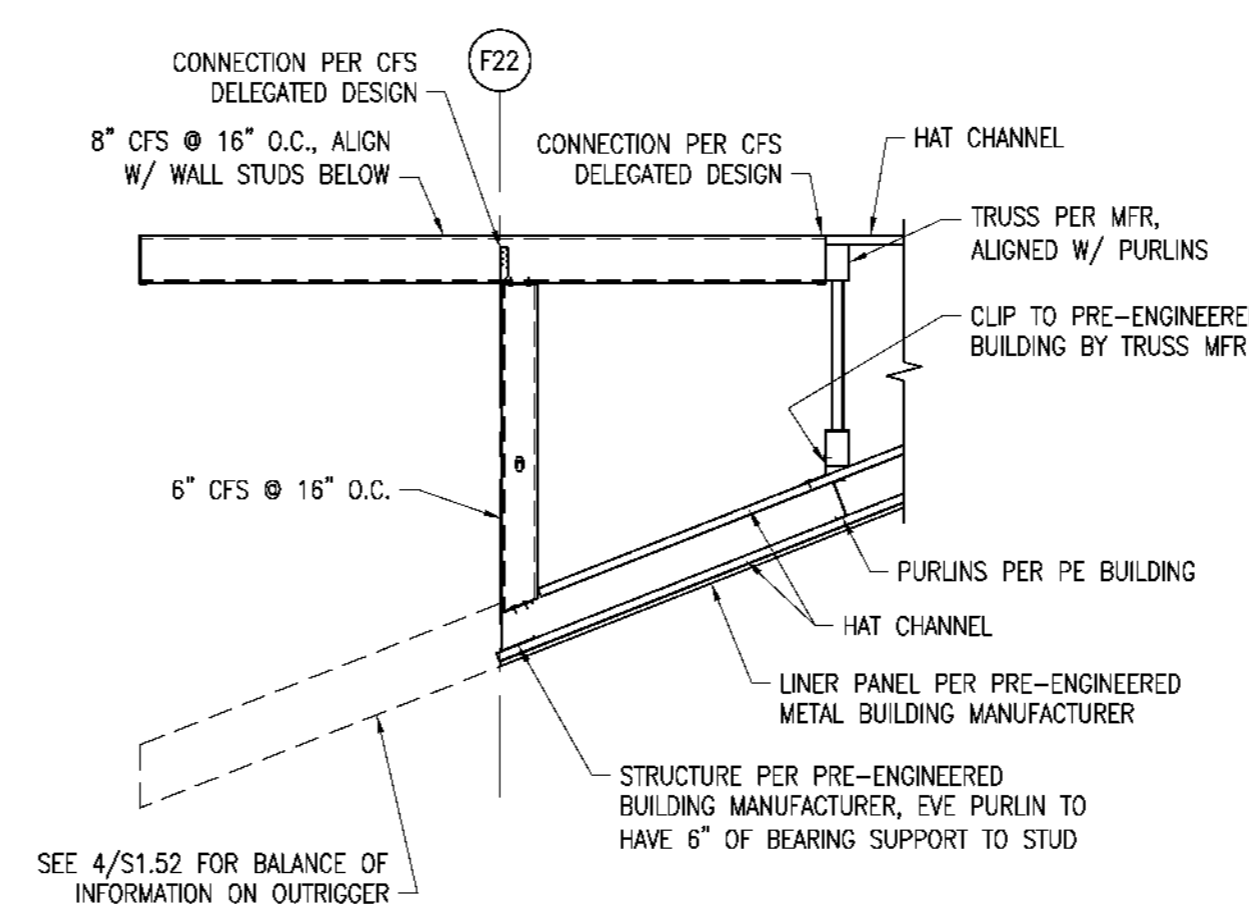
If you must print this drawing, please
recycle



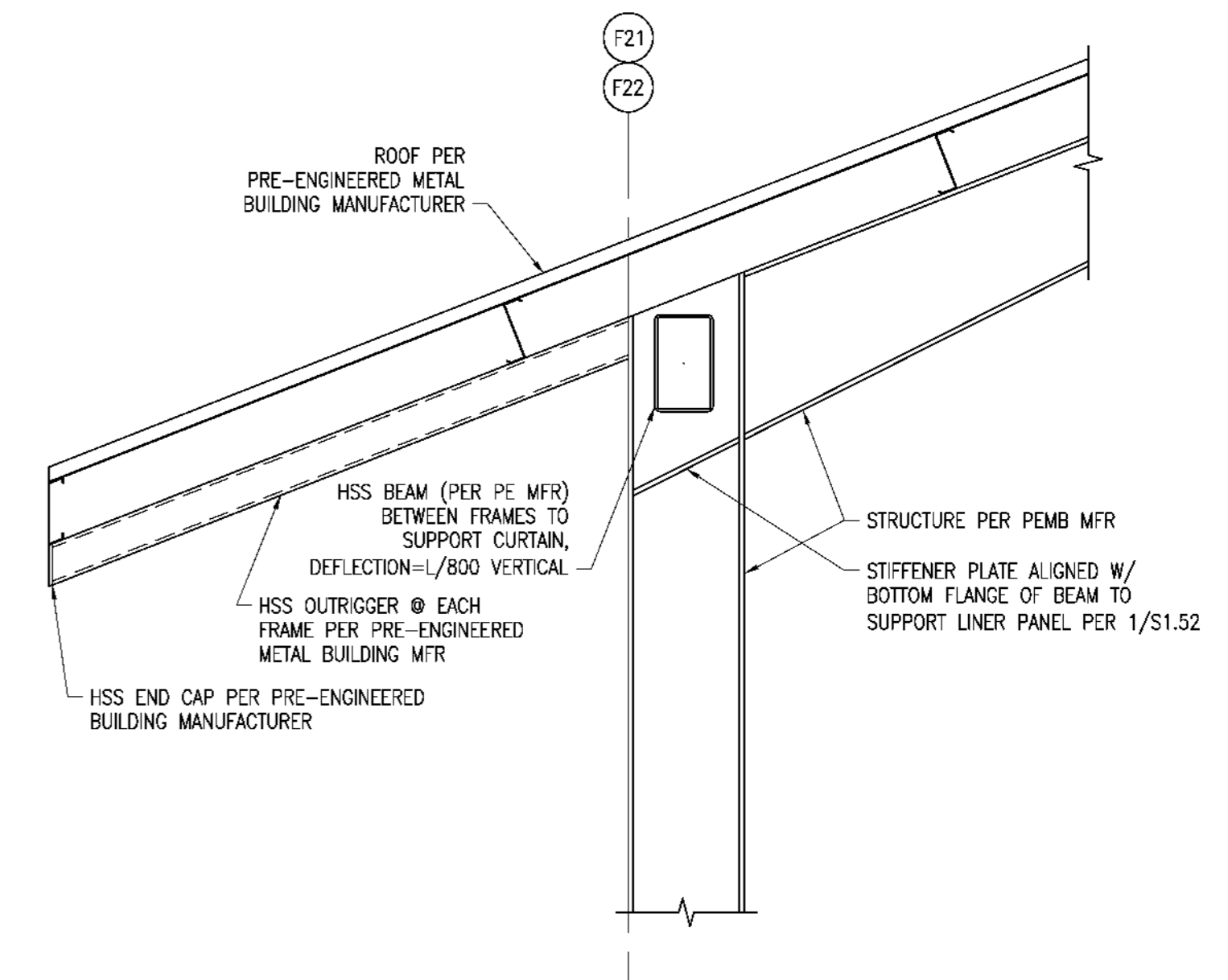
1 SECTION AT BUILDING FRAME
S1.52 3/4"=1'-0"



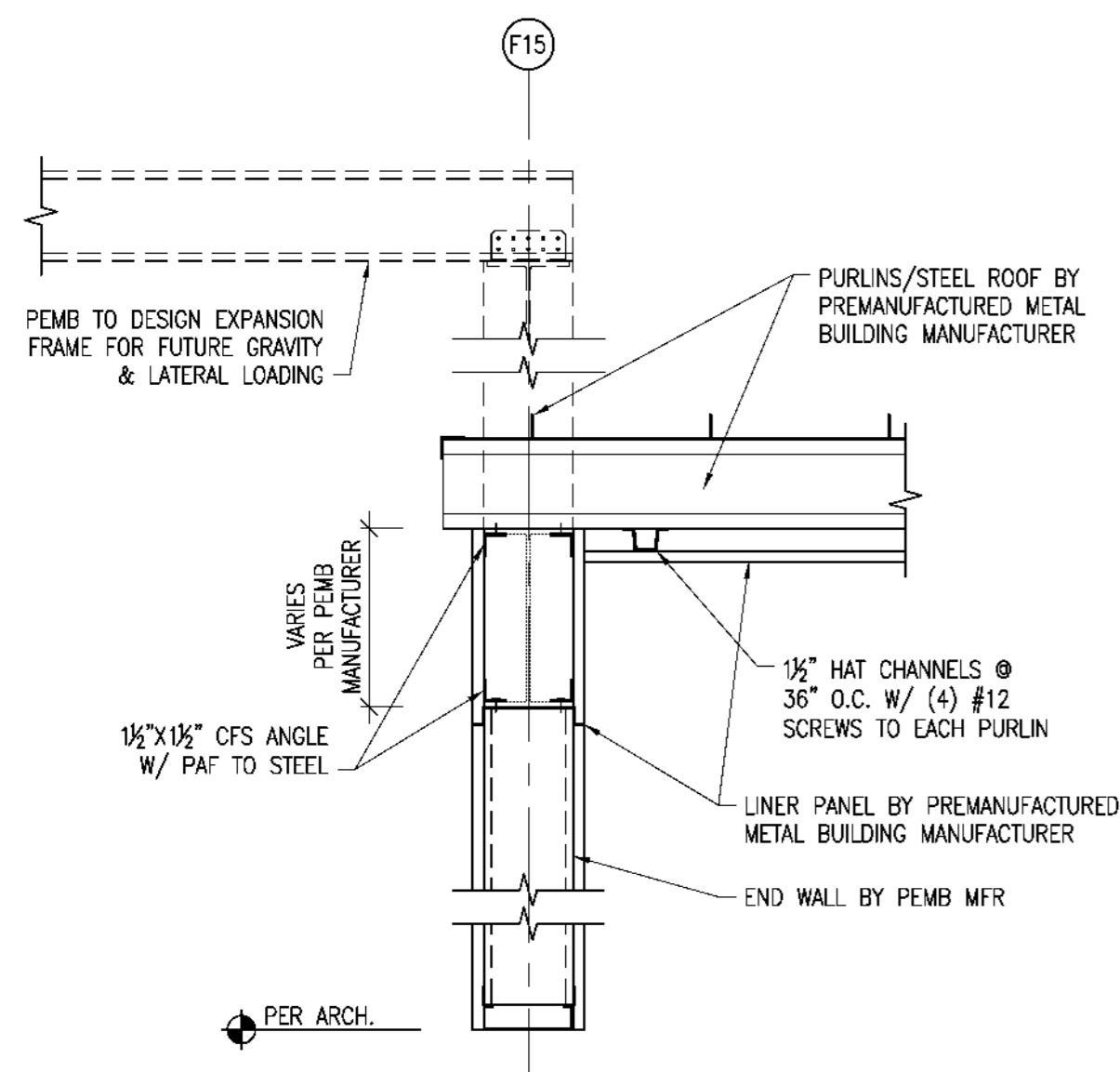
2 ROOF FRAMING AT FRAME BRACE ON GRID F23
S1.52 3/8"=1'-0"



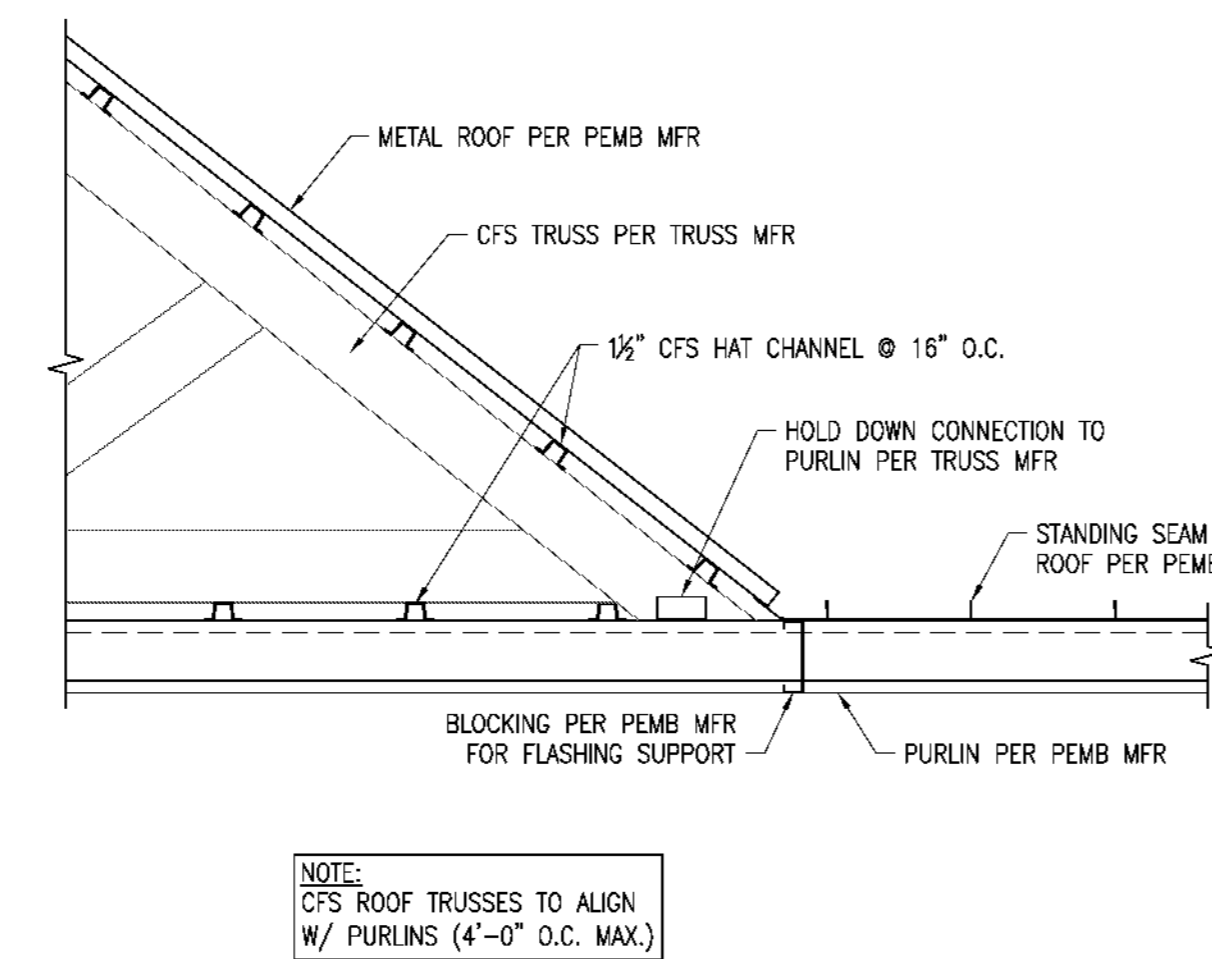
3 ROOF FRAMING AT OVER-FRAMING ON GRID F22
S1.52 3/8"=1'-0"



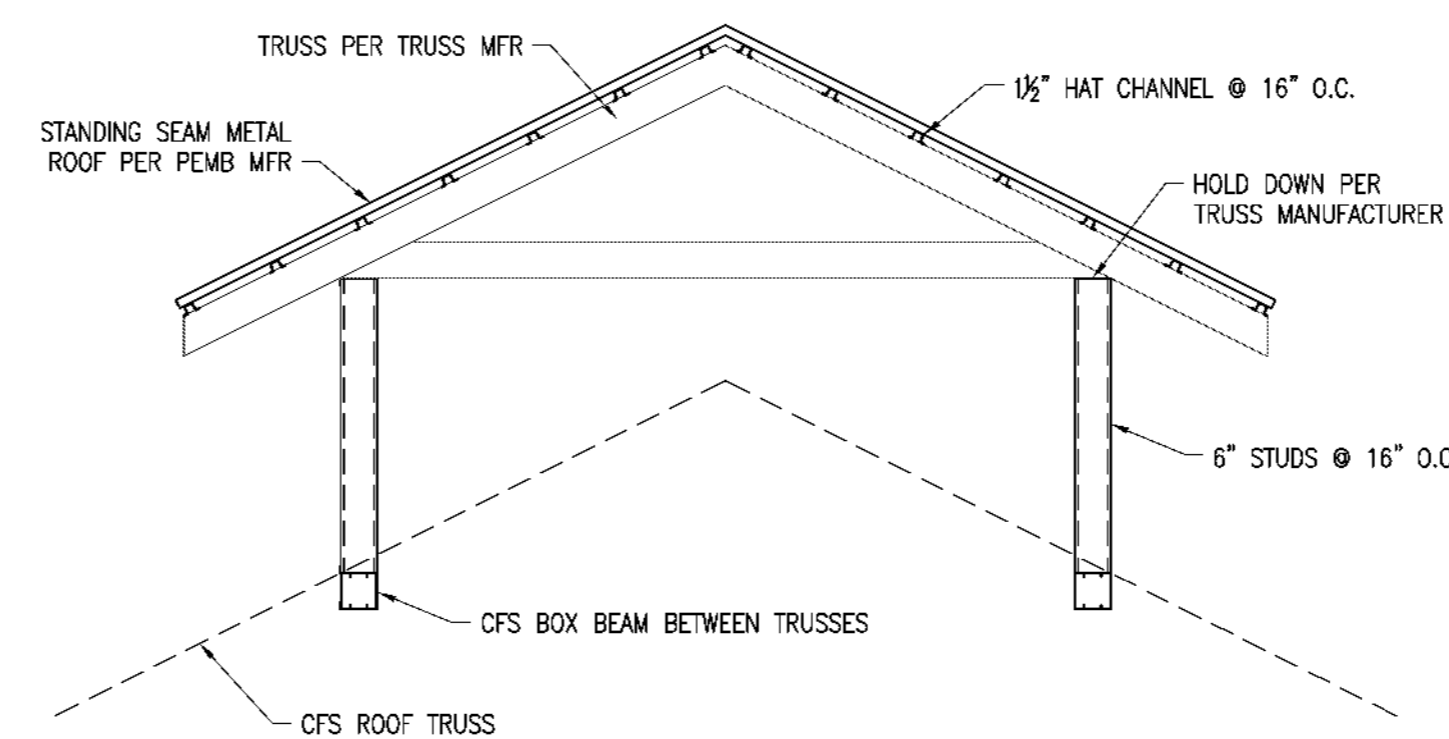
4 ROOF FRAMING AT EVE
S1.52 3/4"=1'-0"



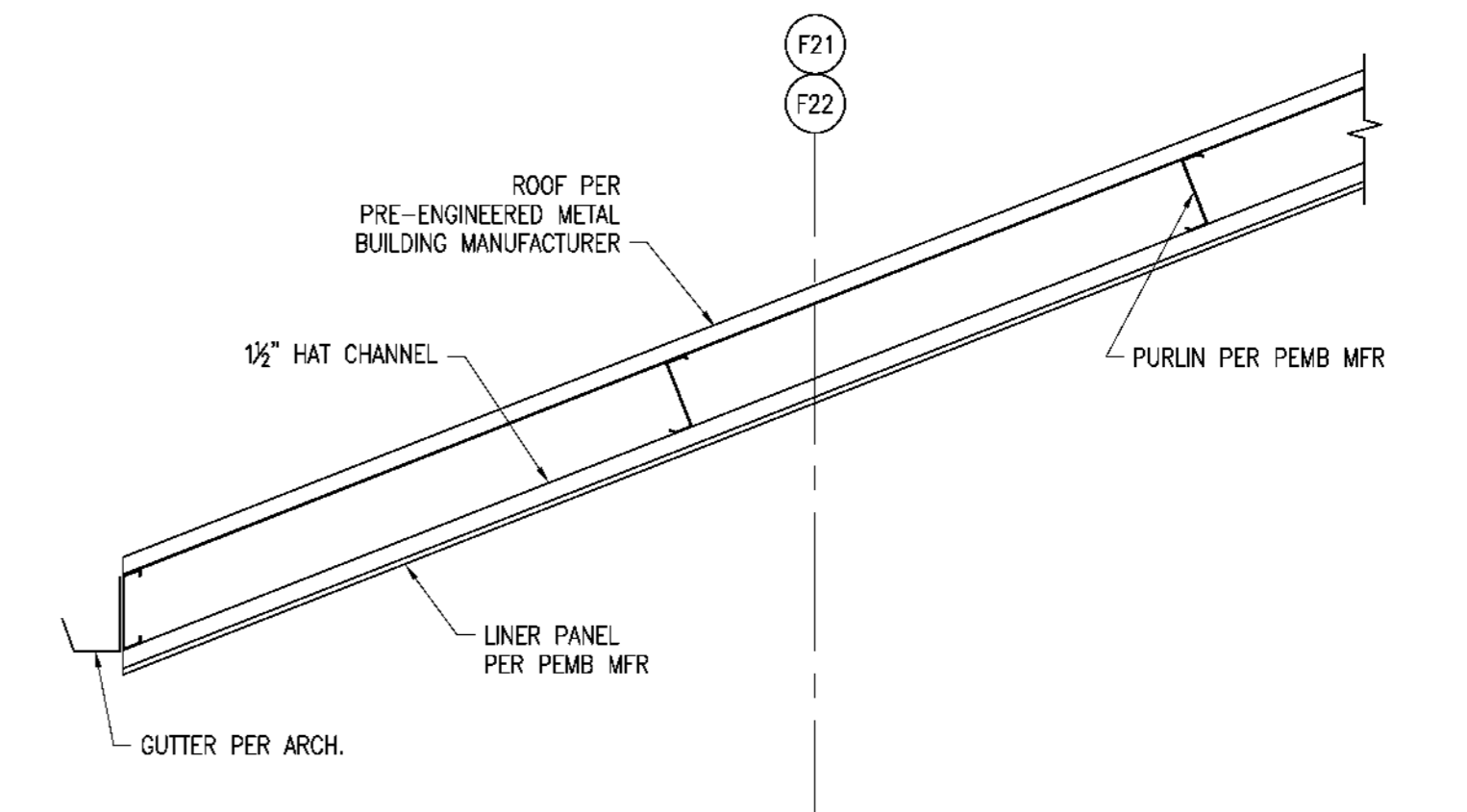
5 ROOF TRANSITION AT GRID F15
S1.52 1"=1'-0"



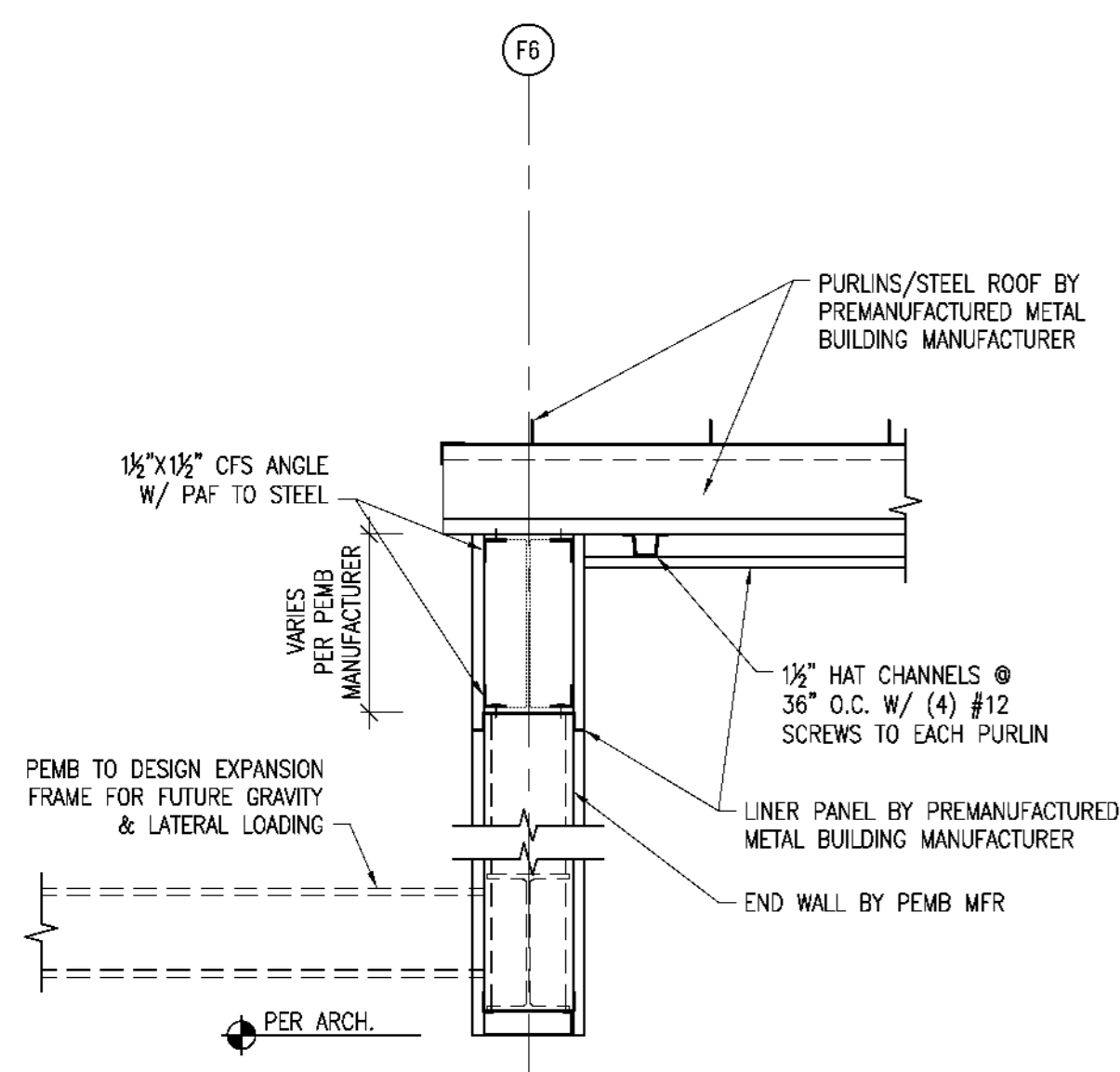
6 OVER-FRAMING BEARING DETAIL
S1.52 3/4"=1'-0"



7 SECTION AT CUPOLA
S1.52 3/8"=1'-0"



8 TYPICAL FRAMING AT EVE
S1.52 3/4"=1'-0"



9 ROOF TRANSITION AT GRID F6
S1.52 1"=1'-0"