



Architecture
Interior Design
Planning
Sustainability

2801 Woodard Drive, Suite 103
Columbia, MO 65202
573.443.1407
www.soa-inc.com

Missouri Certificate of Authority Number: 000826

MEP ENGINEER:

ENGINEERING
2801 Woodard Drive, Suite 105
Columbia, MO 65202
573.443.1407

CIVIL & STRUCTURAL:

M^CCLURE
1901 Pennsylvania Dr.
Columbia, MO 65202
573.814.1568

City of Columbia Parks and Recreation Department
Clary Shy Agriculture Park
1751, 1769, & 1857 WEST ASH ST
COLUMBIA, MO 65203

ISSUE FOR PERMIT
October 19, 2017

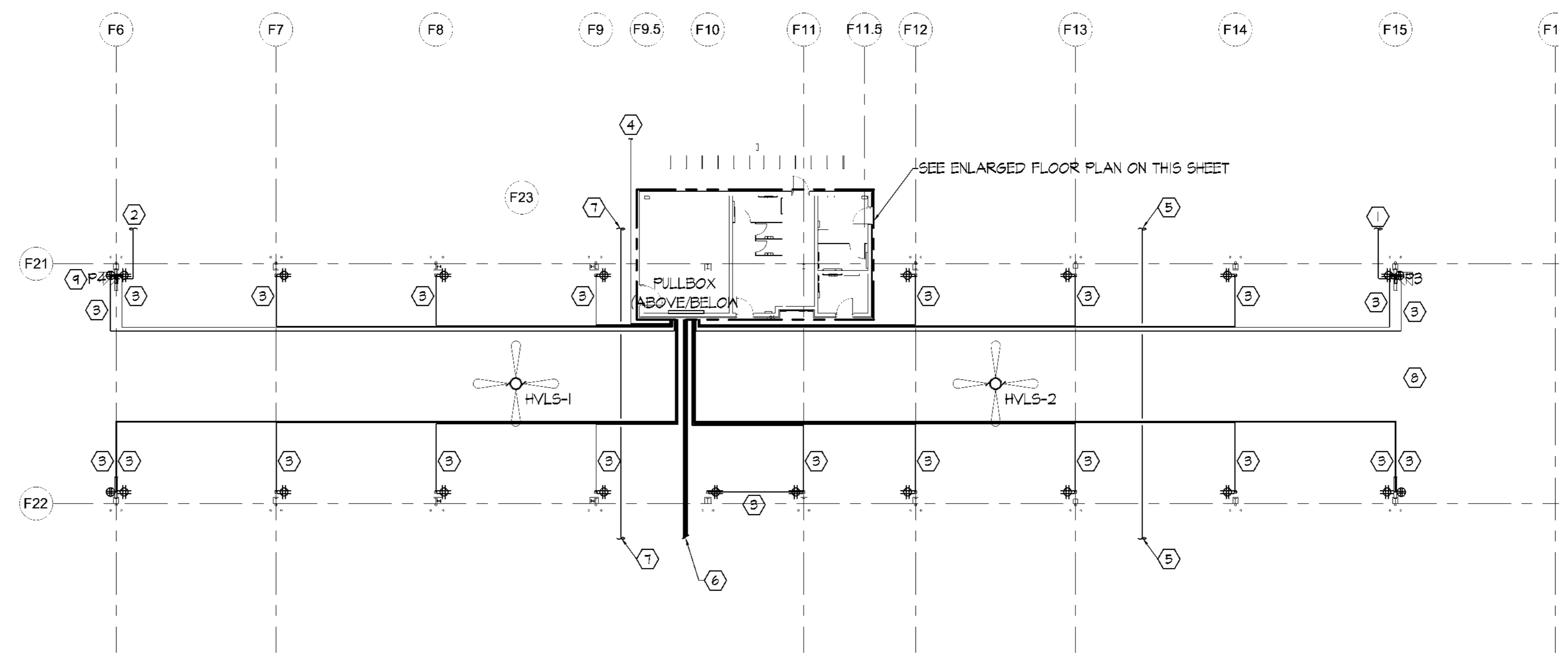
REVISION DATE

FMB CONDUIT PLANS

E1.03

PROJECT #17015

If you must print this drawing, please recycle.



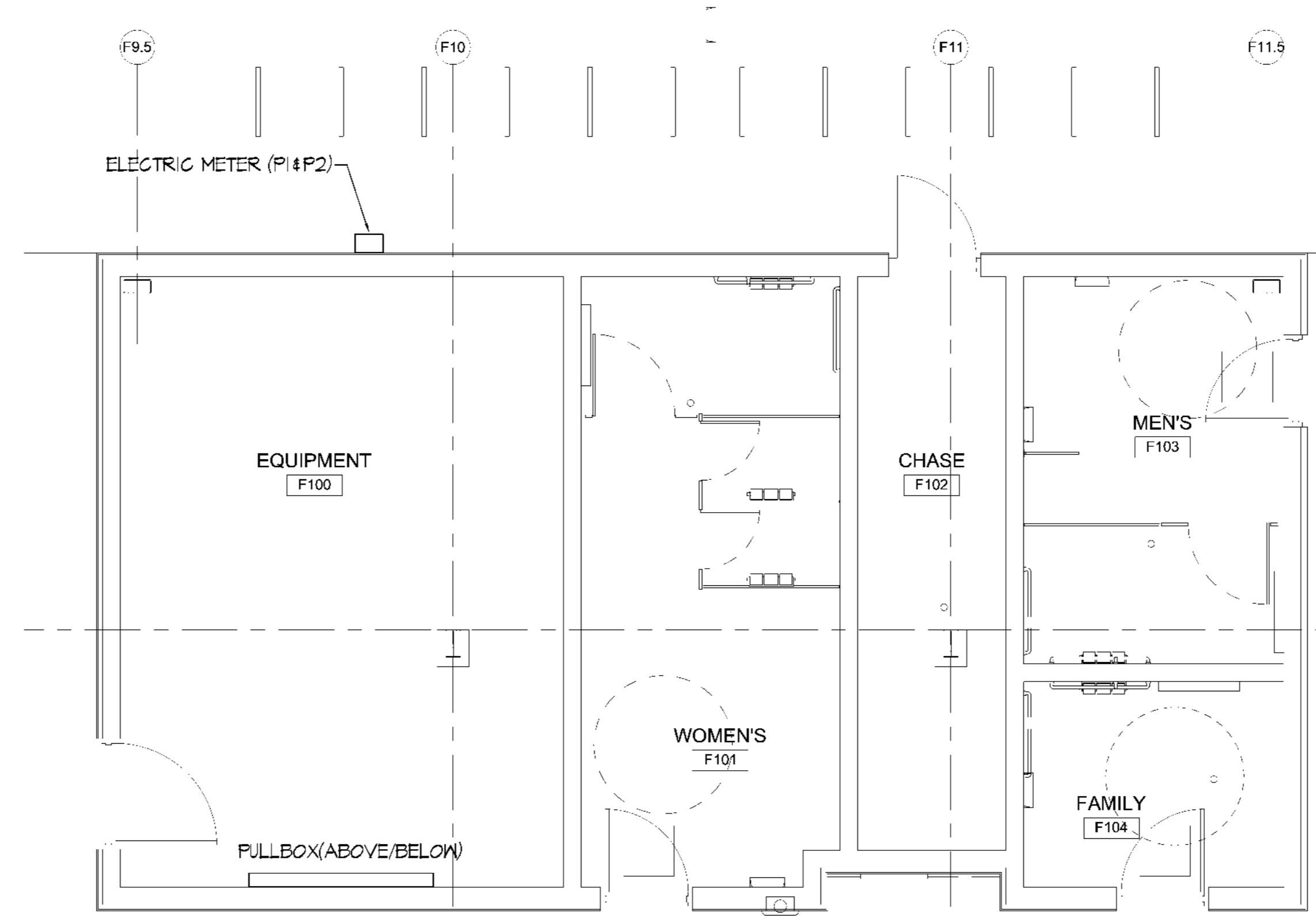
01 FMB CONDUIT FLOOR PLAN - BASE BID
SCALE: 1/16"=1'-0"

GENERAL NOTES:

- DRAWINGS (PLANS, DETAILS AND SCHEMATICS ARE DIAGRAMMATIC IN NATURE AND INDICATE GENERAL LOCATION AND ARRANGEMENT OF NEW AND EXISTING MAJOR EQUIPMENT AND PIPING SYSTEMS. CONTRACTOR SHALL BE RESPONSIBLE FOR VERIFYING EXACT LOCATIONS AND DIMENSIONS OF ALL EQUIPMENT, PIPING AND PIPING COMPONENTS. CONTRACTOR IS ALSO RESPONSIBLE FOR FINAL TIE-IN POINT LOCATIONS BETWEEN NEW AND EXISTING PIPING SYSTEMS EQUIPMENT AND UTILITIES.
- UNLESS OTHERWISE NOTED EXISTING SHOWN IN FADE-AWAY PEN. NEW, RELOCATED OR DEMOLITION ITEMS SHOWN IN DARK HEAVY PEN.
- SEE CIVIL DRAWINGS FOR UTILITIES AND UNDERGROUND SERVICES.
- GAP CONDUIT WATER TIGHT ON ALL EXPOSED CONDUIT.

NOTES:

- 3"Ø BURIED UNDER SLAB FROM ELECTRICAL PANEL "P3" LOCATED AT COLUMN F15 TO POLE MOUNTED TRANSFORMER ON NEAREST ELECTRICAL POLE LOCATED ON NORTH SIDE OF PROPERTY.
- 3"Ø BURIED UNDER SLAB FROM ELECTRICAL PANEL "P4" LOCATED AT COLUMN F6 TO POLE MOUNTED TRANSFORMER ON NEAREST ELECTRICAL POLE LOCATED ON NORTH SIDE OF PROPERTY.
- 1"Ø BURIED UNDER SLAB FROM ELECTRICAL PANEL "P2" TO OUTLET LOCATED ON STEEL FEDESTAL. SEE ARCHITECTURAL/STRUCTURAL FOR MORE DETAIL. PROVIDE WITH PULL STRING.
- 3"Ø BURIED UNDER SLAB FROM ELECTRICAL PANEL "P2" TO NORTH DRIVE LIGHTS. PROVIDE WITH PULL STRING.
- 3"Ø BURIED UNDER SLAB FROM OFFICE PULLBOX TO NEAREST ELECTRIC POLE LOCATED ON NORTH SIDE OF PROPERTY.
- 6 - 3"Ø BURIED UNDER SLAB FROM ELECTRICAL PANEL "P1". ONE CONDUIT EACH FOR: SOUTH DRIVE WEST LIGHTS, SOUTH DRIVE EAST LIGHTS, PARKING LOT LIGHTS, WALKWAY LIGHTS, SOUTH ENTRANCE SIGN LIGHT, AND EAST ENTRANCE SIGN LIGHT. PROVIDE WITH PULL STRINGS.
- 2"Ø BURIED UNDER SLAB FROM CLASSROOM PULLBOX TO NEAREST ELECTRIC POLE LOCATED ON NORTH SIDE OF PROPERTY.
- ALL BURIED CONDUITS AND UTILITIES IN FMB EAST FOUNDATION SHALL BE INSTALLED UNDER BASE BID. PROVIDE ALL CONDUITS WITH PULL STRING. SEE E4.02 FOR MORE DETAIL.
- AS PART OF BASE BID, ROUTE CONDUITS FOR FUTURE FMB WEST OUTLET POWER DOWN FROM PULL BOX, THROUGH FMB CENTRAL SLAB, TURN 90° WEST AND STUB OUT OF CONCRETE. SEAL ENDS WEATHER TIGHT. SEE E5.02 FOR MORE DETAIL.



02 FMB ENLARGED RESTROOM POWER FLOOR PLAN
SCALE: 1/4"=1'-0"

JOB# 17015 FMB 10/17/2017