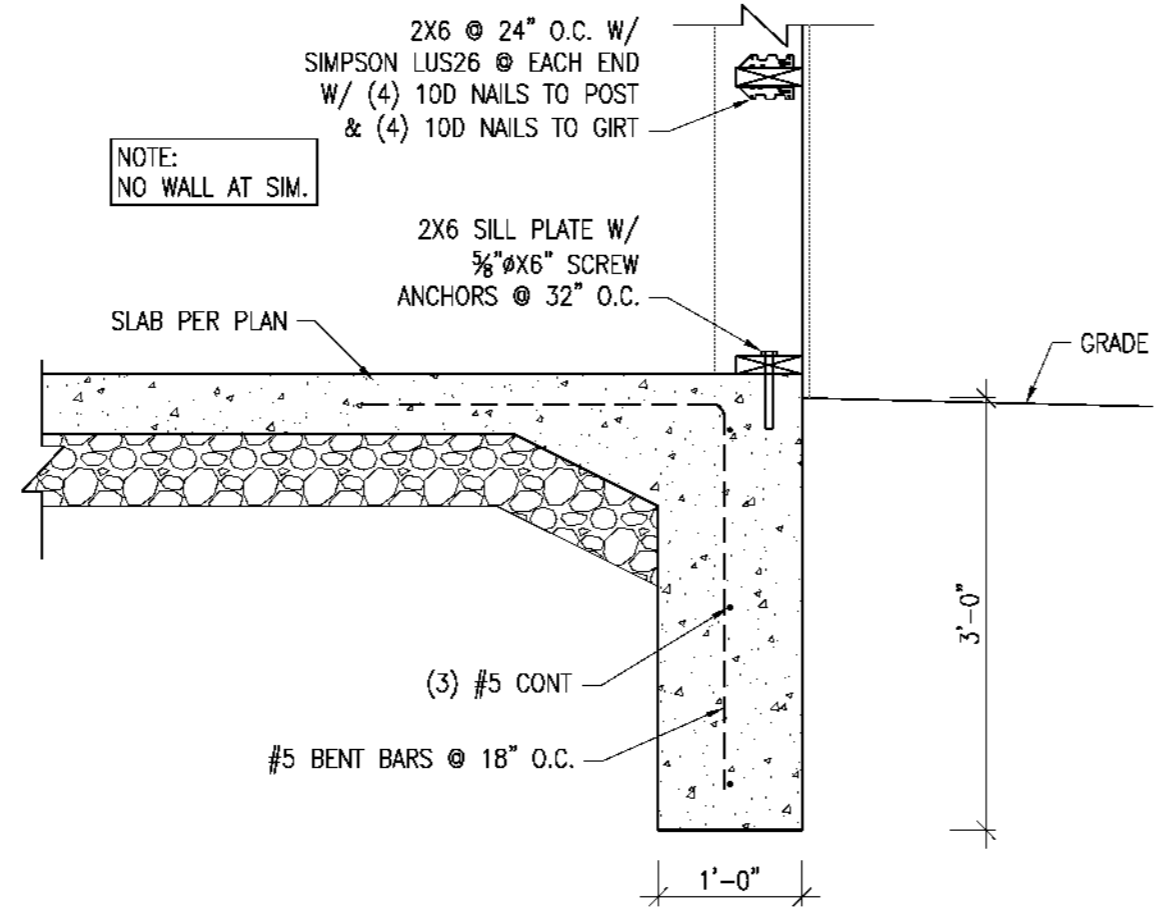
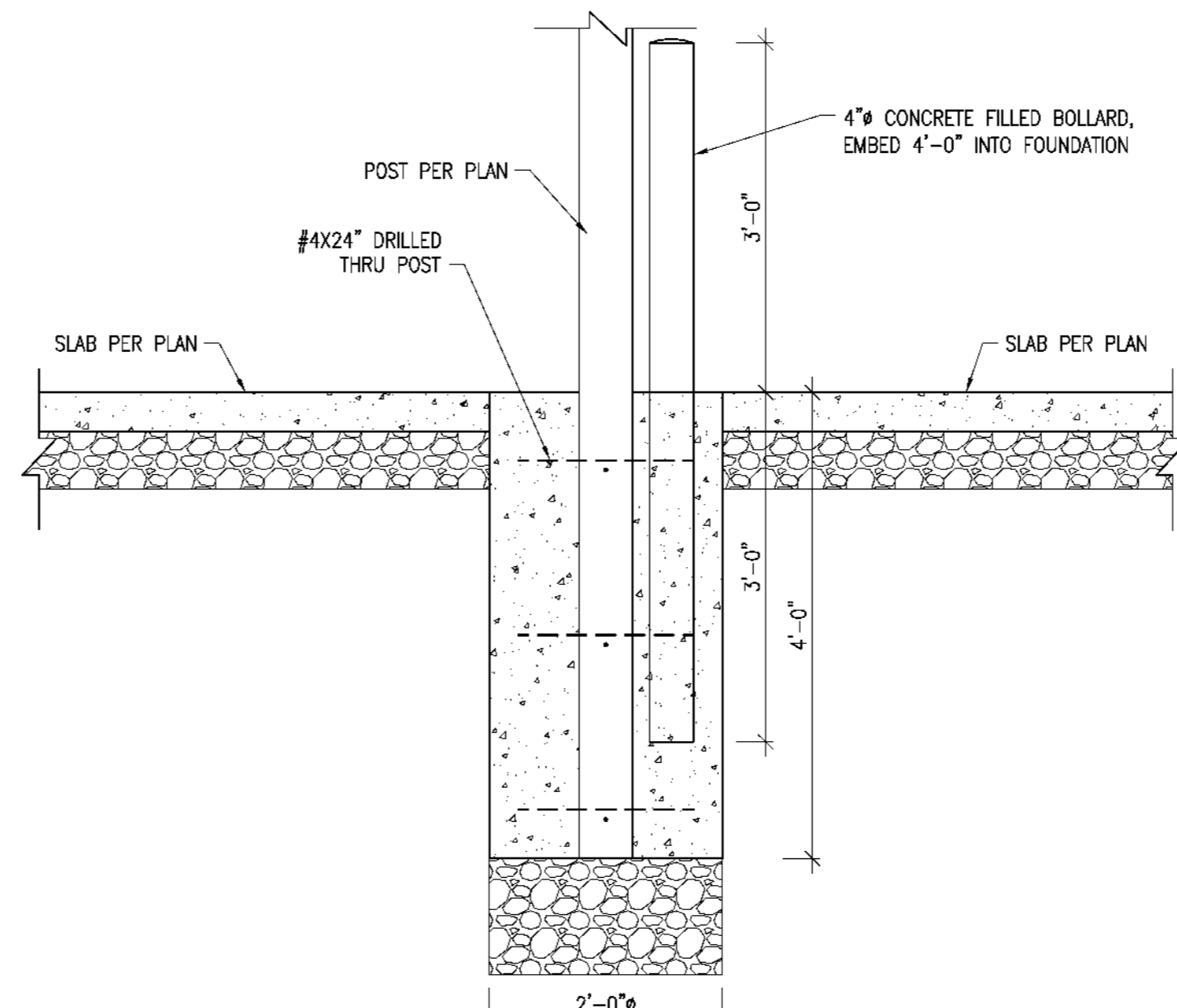


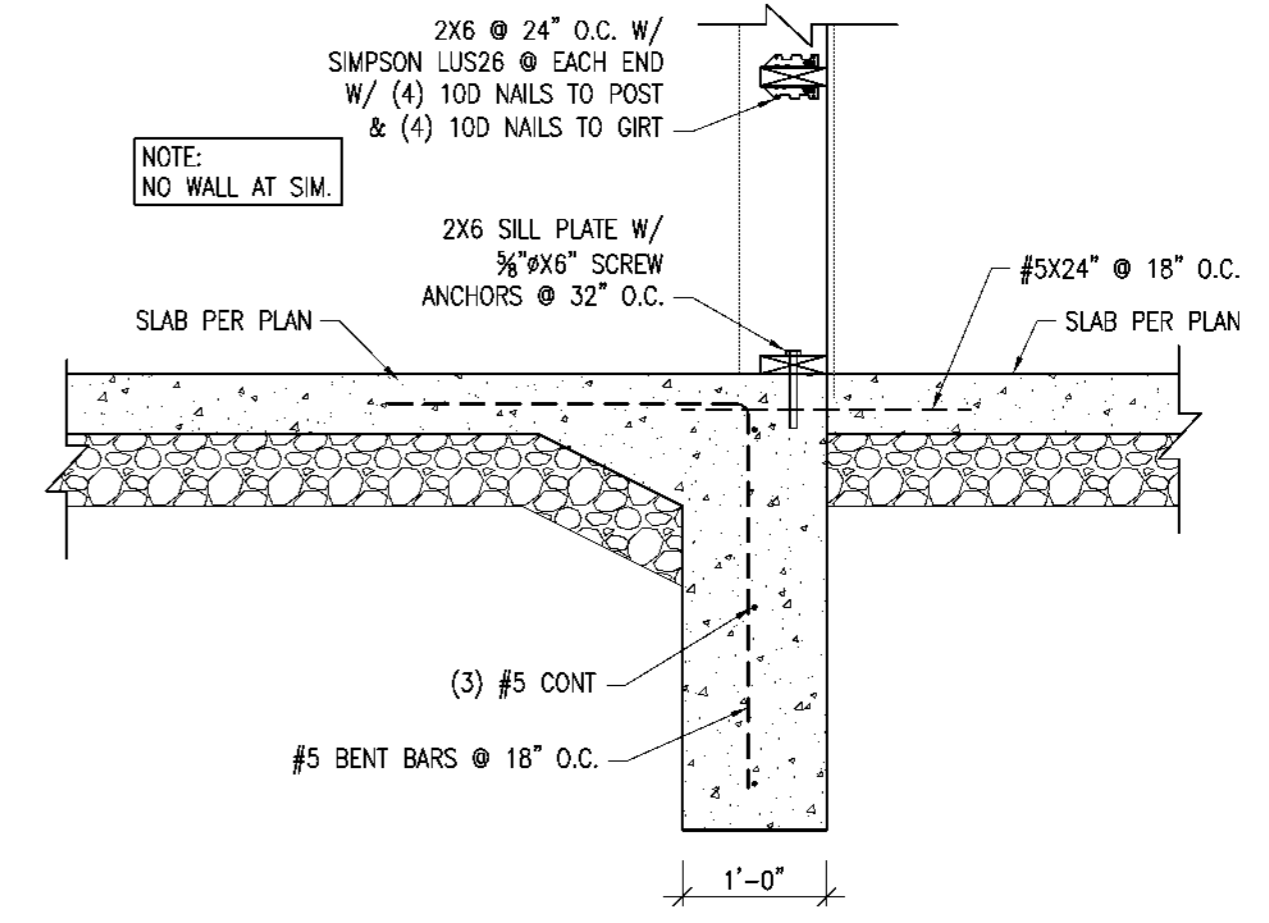
1 SECTION AT FOOTING  
S2.51 3/4"=1'-0"



2 SECTION AT WALL FOUNDATION  
S2.51 3/4"=1'-0"



3 SECTION AT MEZZANINE FOOTING  
S2.51 3/4"=1'-0"



4 SECTION AT GREENHOUSE FOOTING  
S2.51 3/4"=1'-0"



TIMOTHY P. EARNEY, P.E.  
PE-2011000879  
EXPIRES 12/31/17



Architecture

Interior Design

Planning

Sustainability

2801 Woodard Drive, Suite 103  
Columbia, MO 65202  
573.443.1407

www.soa-inc.com

Missouri Certificate of  
Authority Number: 000826

MEP ENGINEER:



2801 Woodard Drive, Suite 105  
Columbia, MO 65202  
573.443.1407

CIVIL & STRUCTURAL:



1901 Pennsylvania Dr.  
Columbia, MO 65202  
573.814.1568  
MO Corp No. 2006023253

City of Columbia Parks and  
Recreation Department  
**Clary Shy Agriculture Park**  
1751, 1769, & 1857 WEST ASH ST  
COLUMBIA, MO 65203

ISSUE FOR PERMIT

October 19, 2017

REVISION	DATE

BARN DETAILS

**S2.51**

SOA PROJECT 16052

If you must print this drawing, please  
recycle