

TIMOTHY P. EARNEY, P.E.
E-2011000879
EXPIRES 12/31/17



Architecture

Interior Design

Planning

Sustainability

2801 Woodard Drive, Suite 103
Columbia, MO 65202
573.443.1407

www.soa-inc.com

Missouri Certificate of
Authority Number: 000826

MEP ENGINEER:



2801 Woodard Drive, Suite 105
Columbia, MO 65202
573.443.1407

CIVIL & STRUCTURAL:



1901 Pennsylvania Dr.
Columbia, MO 65202
573.814.1568
MO Corp No. 2006023253

Clary Shy Agriculture Park

City of Columbia Parks and
Recreation Department
1751, 1769, & 1857 WEST ASH ST
COLUMBIA, MO 65203

ISSUE FOR PERMIT

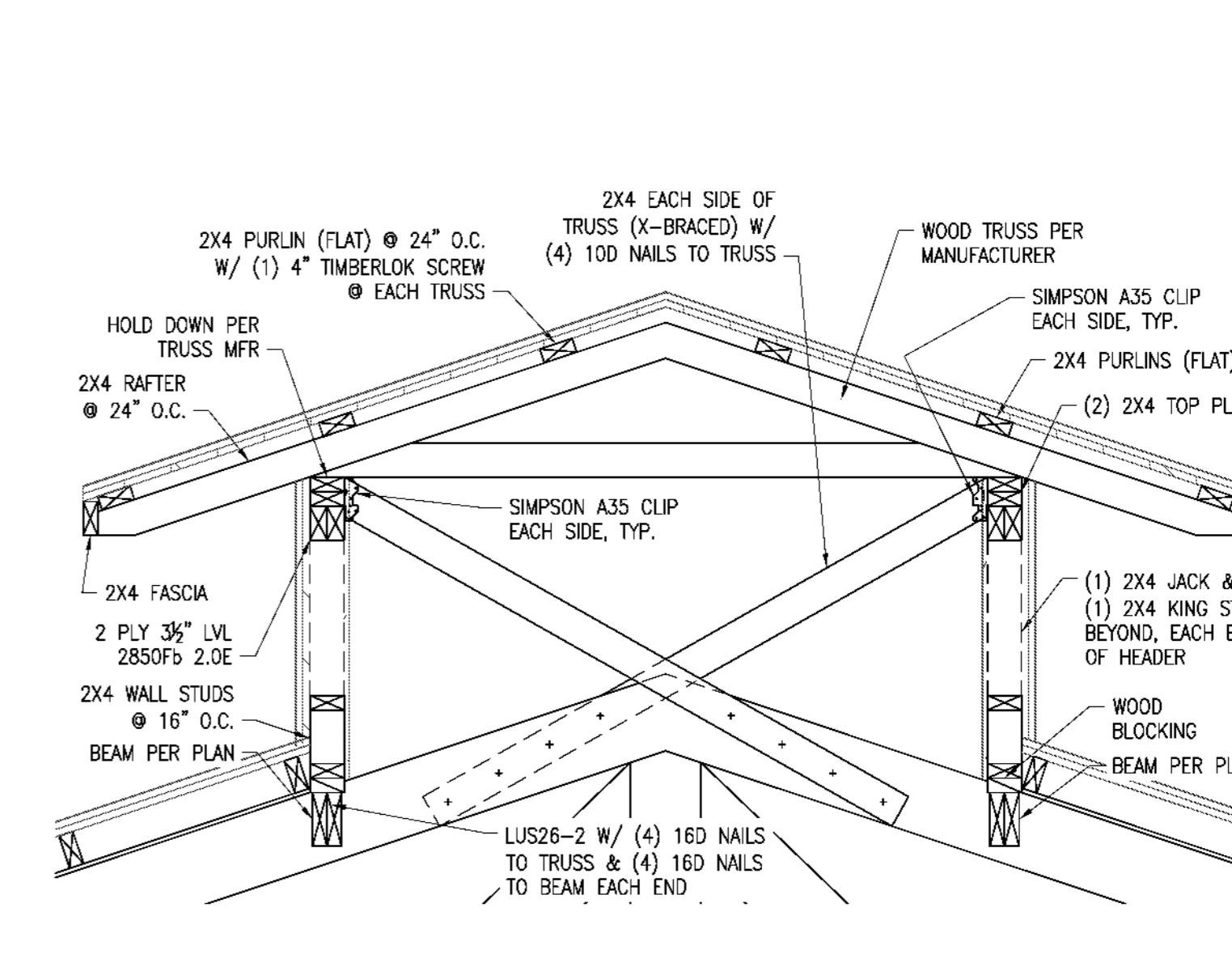
October 19, 2017
REVISION DATE

BARN DETAILS

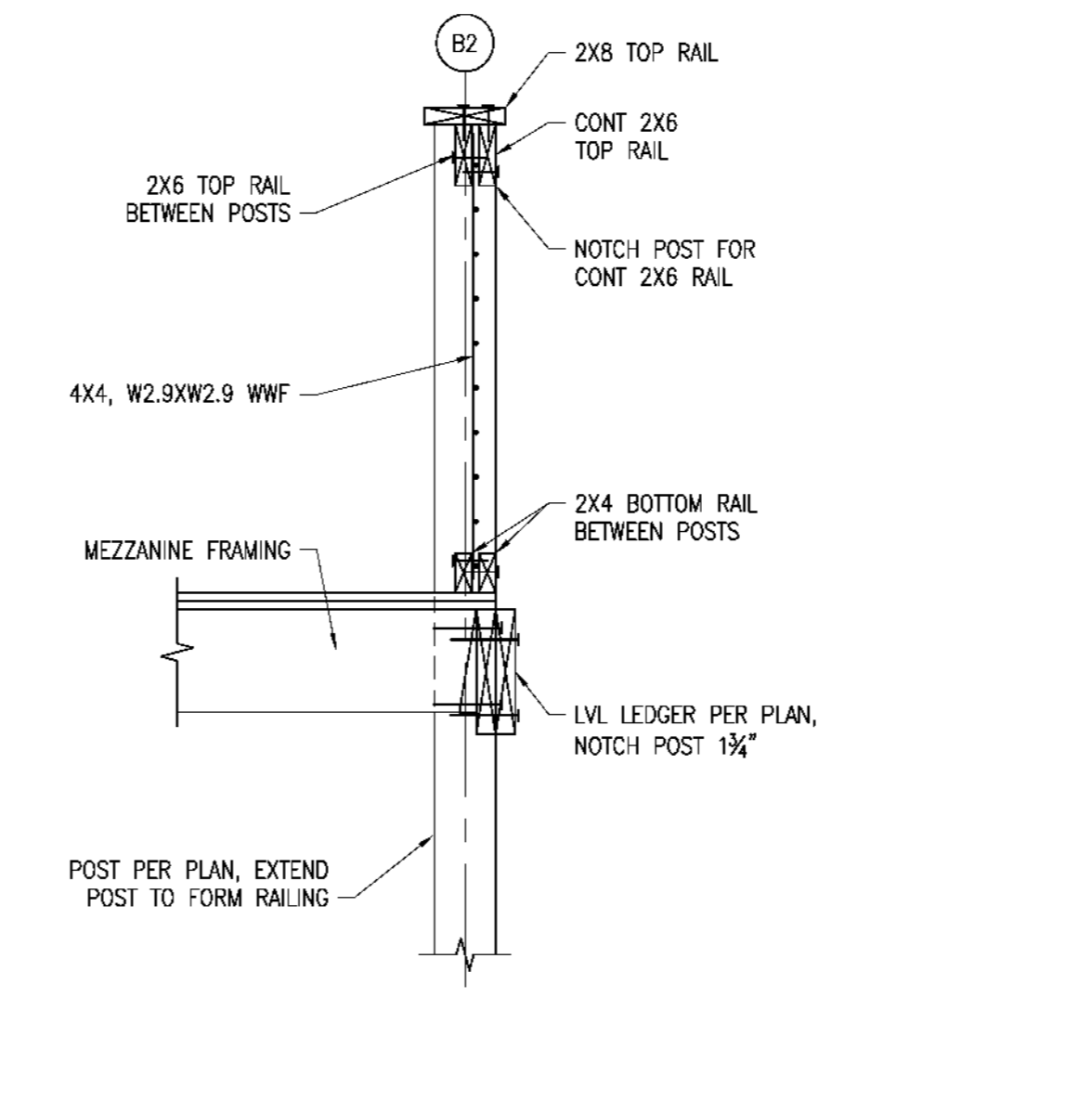
S2.52

SOA PROJECT 16052

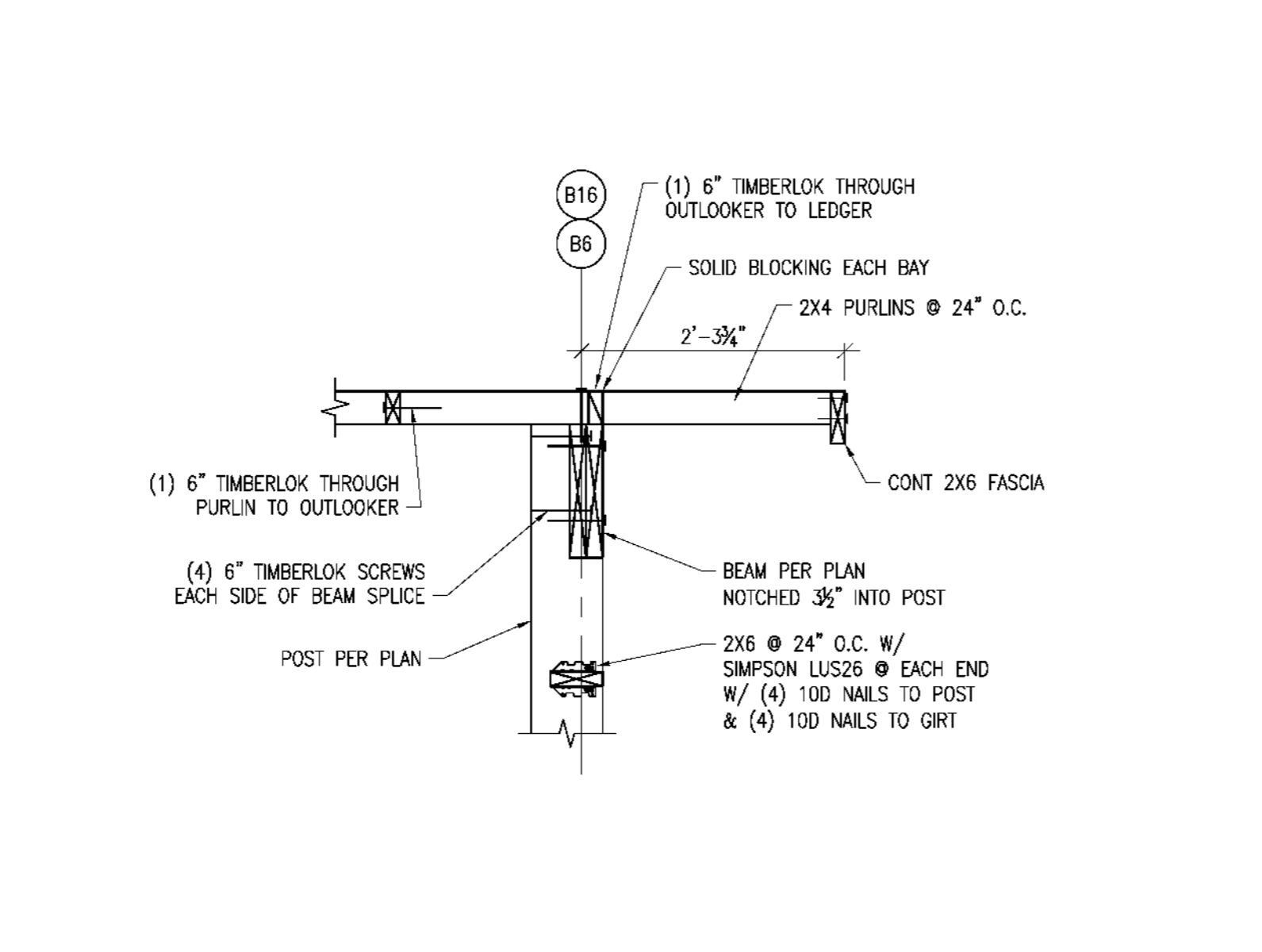
If you must print this drawing, please
recycle.



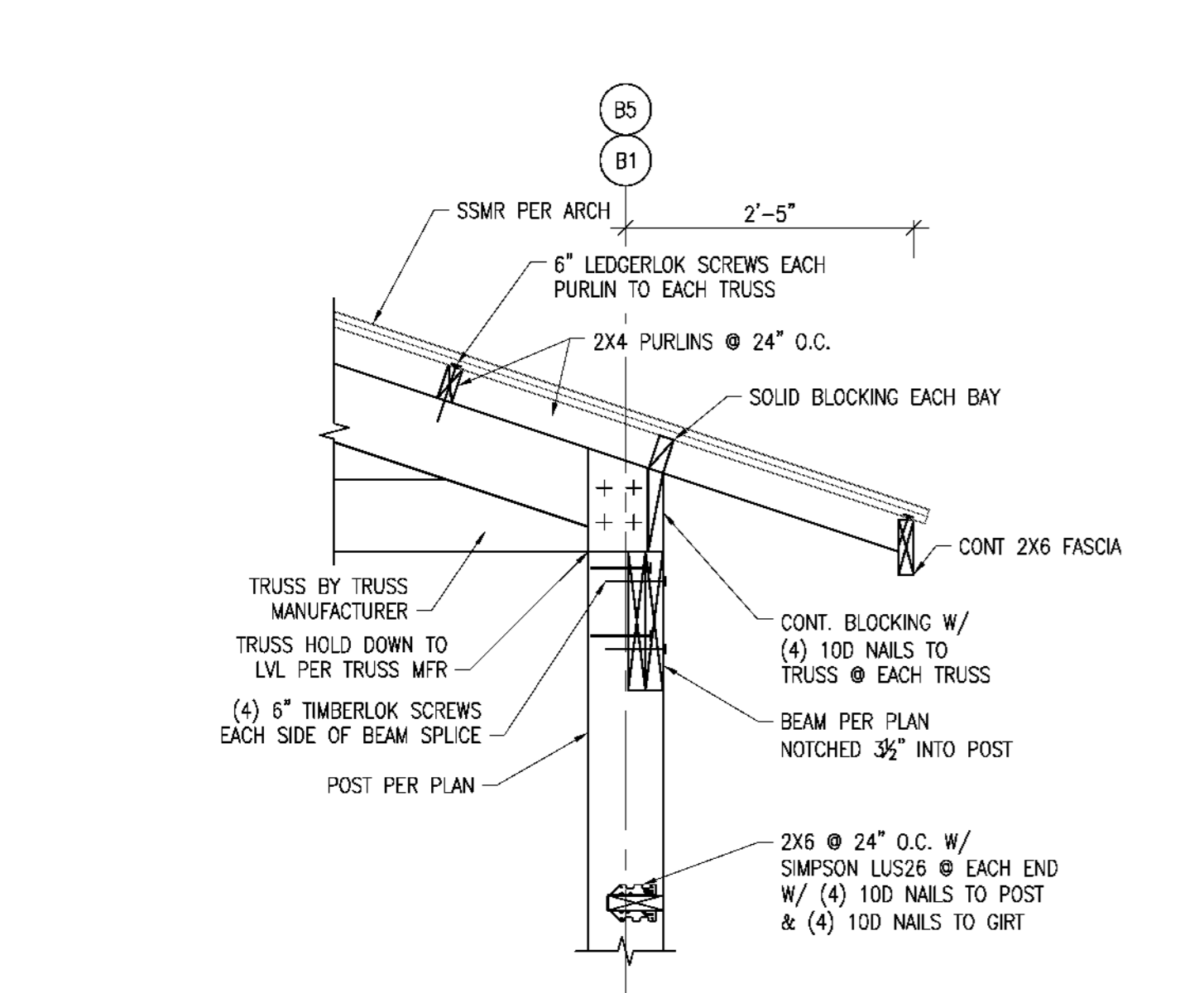
4 SECTION AT CUPOLA 3/4\"=1'-0"



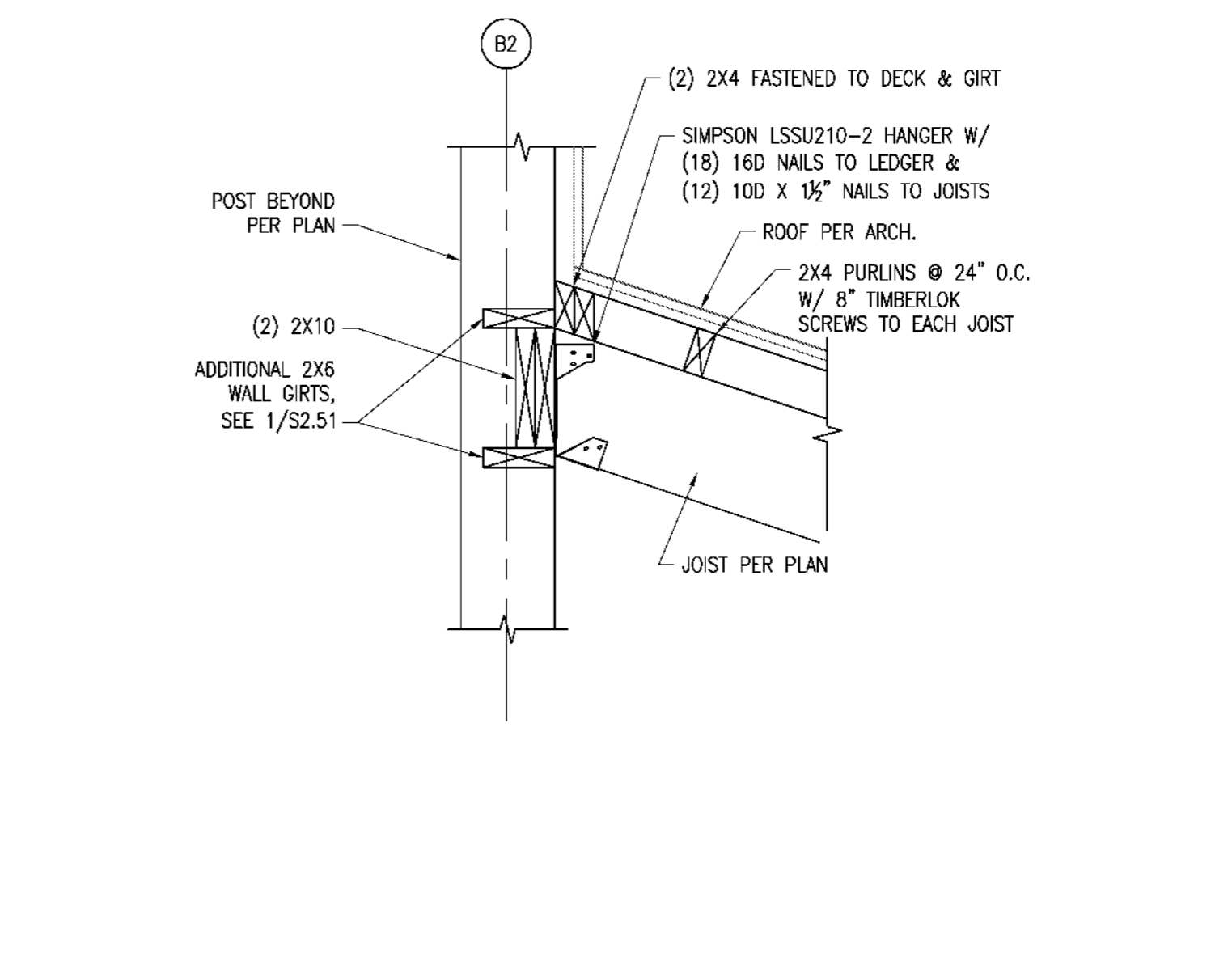
3 MEZZANINE FIXED RAILING DETAIL 3/4\"=1'-0"



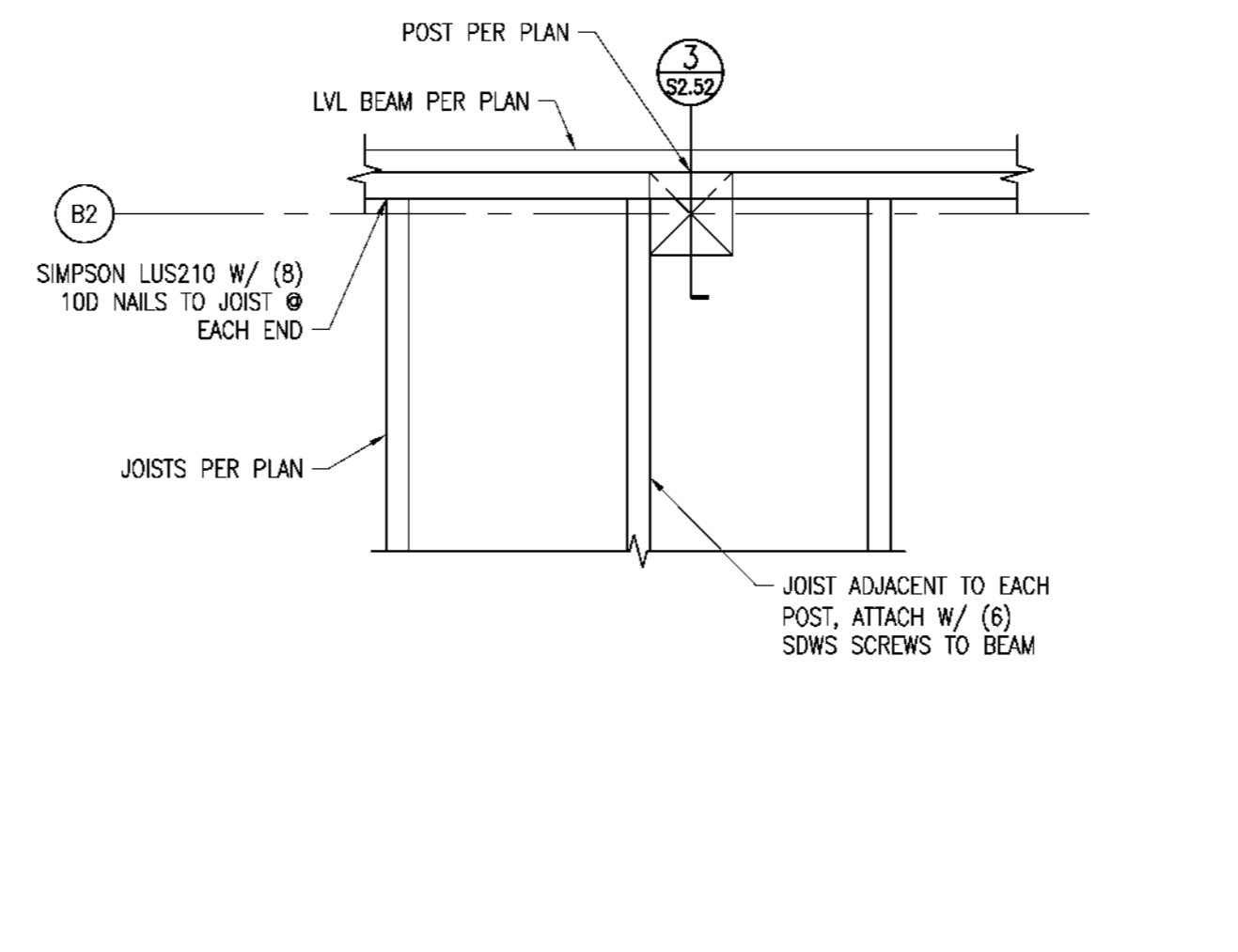
2 RAKE AT WALL 3/4\"=1'-0"



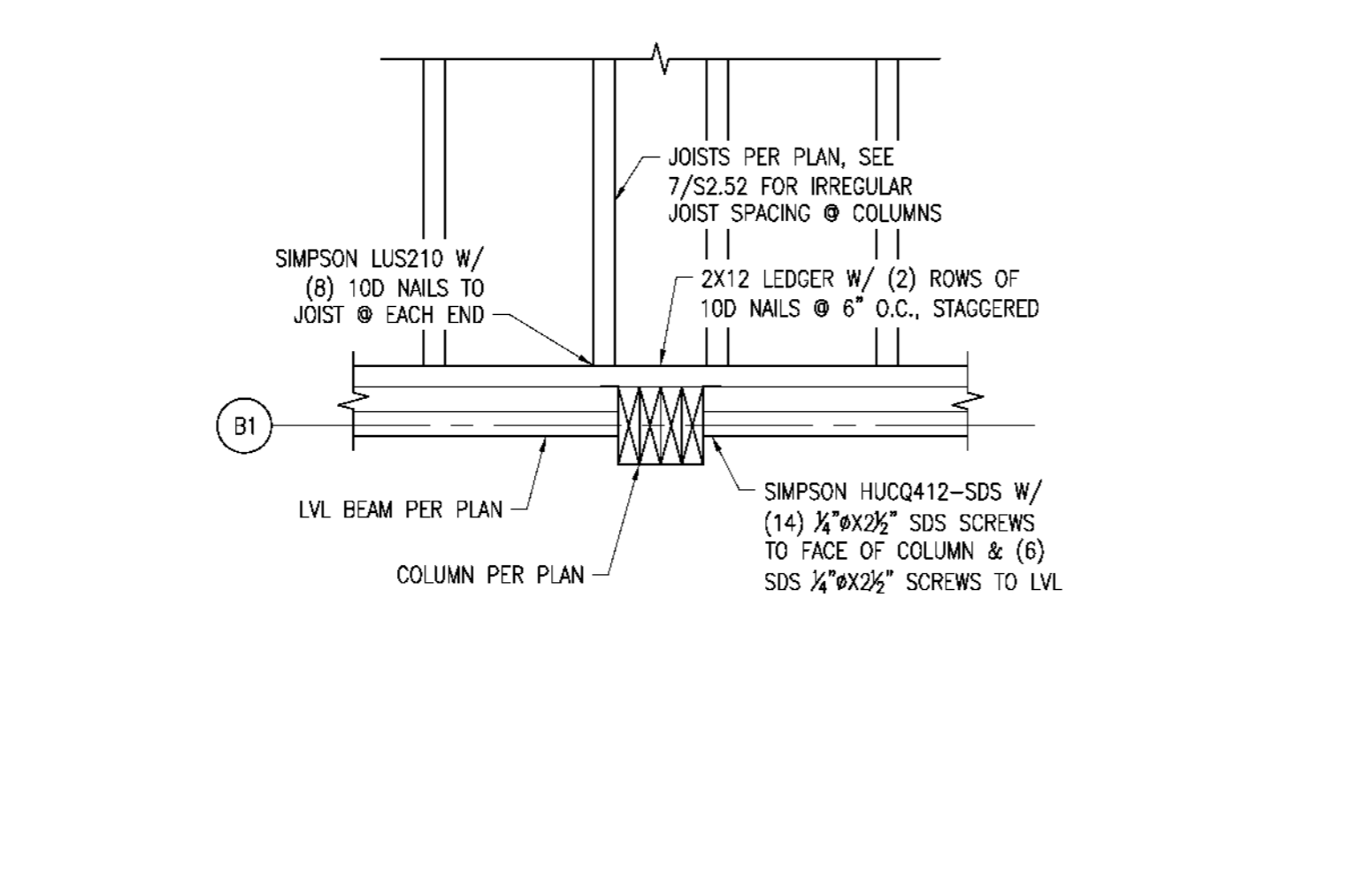
1 TYPICAL TRUSS BEARING AT WALL 3/4\"=1'-0"



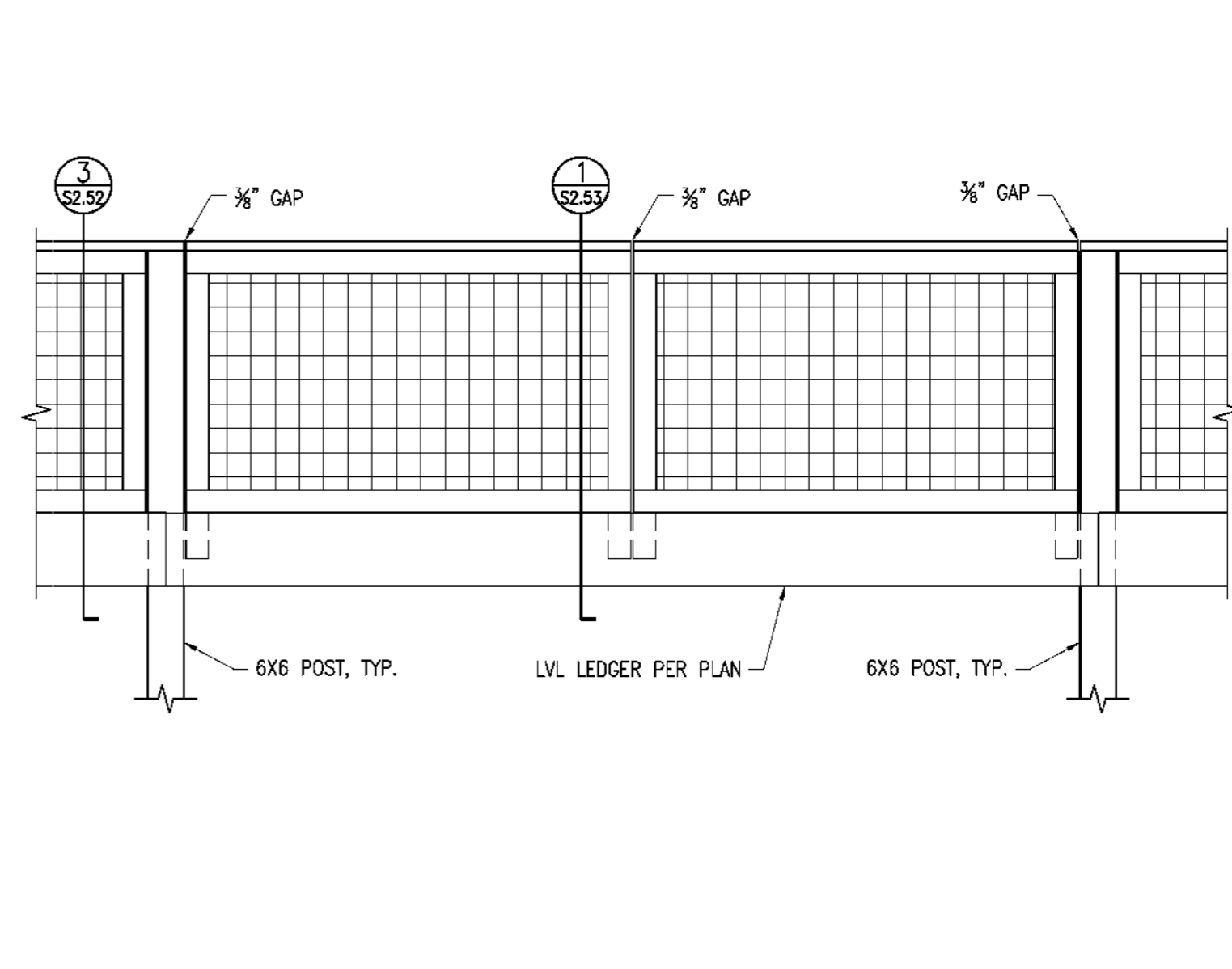
8 PORCH/FREEZER JOIST ATTACHMENT 1\"=1'-0"



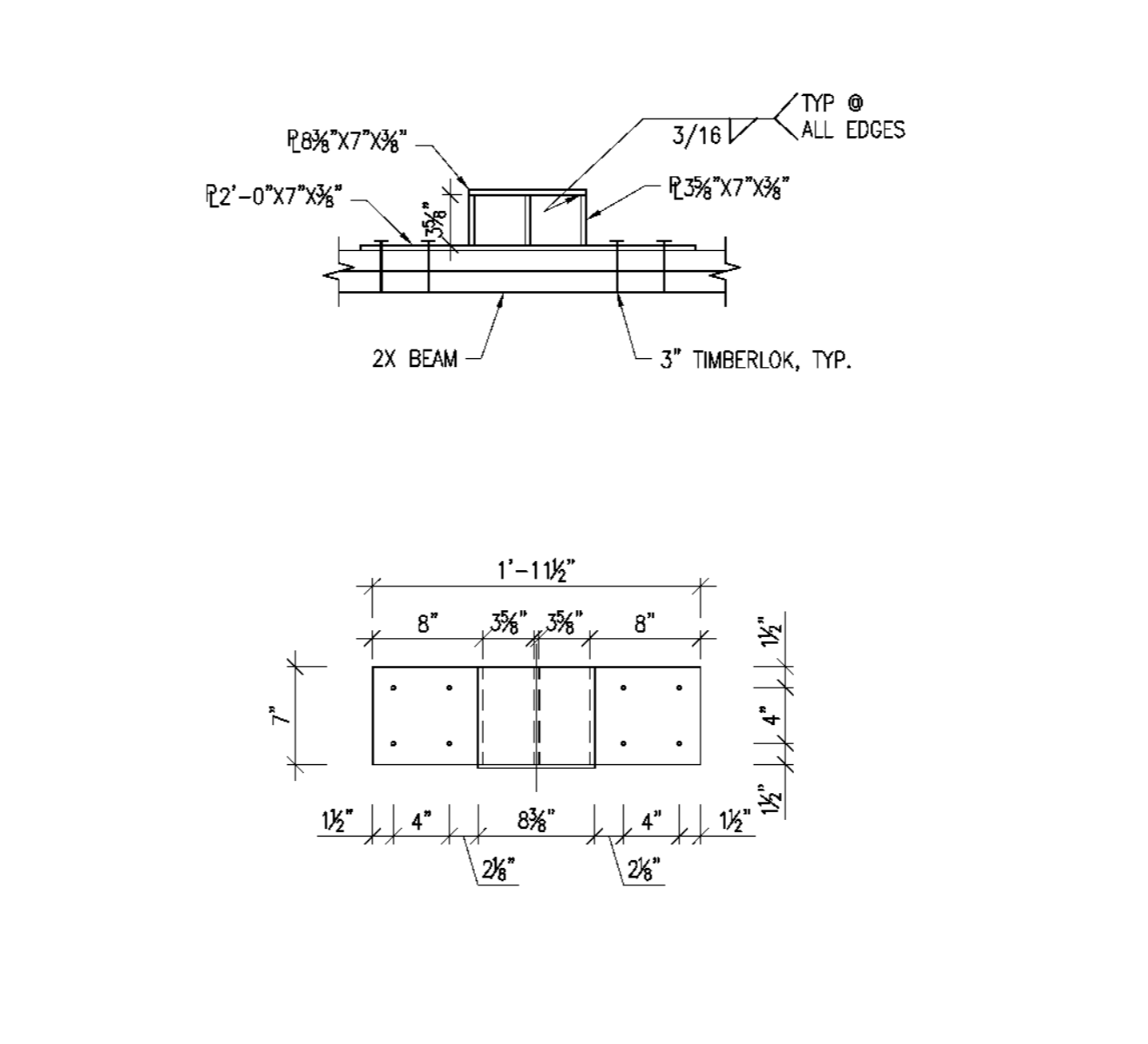
7 INTERIOR MEZZANINE FLOOR JOIST ATTACHMENT 1\"=1'-0"



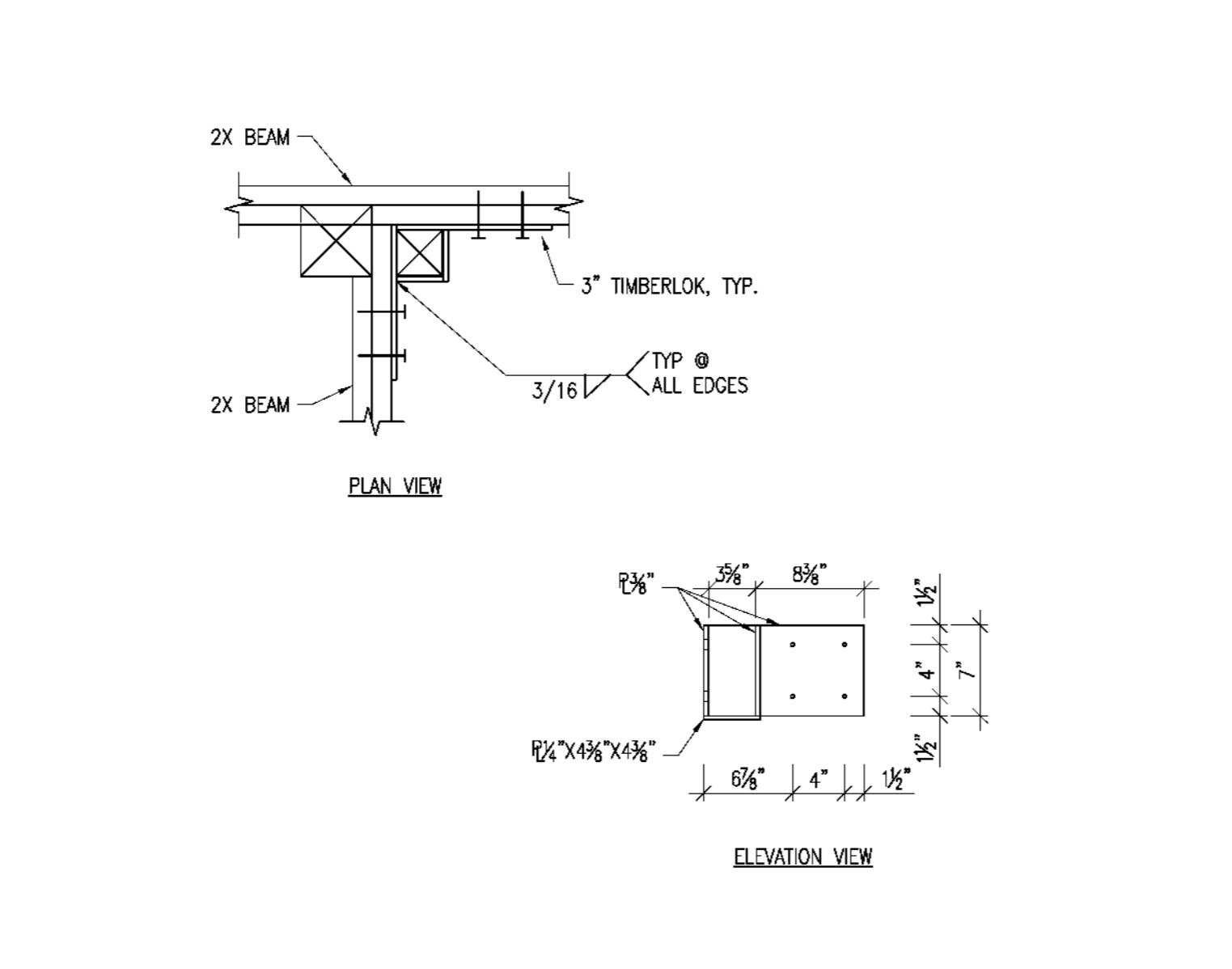
6 EXTERIOR MEZZANINE FLOOR JOIST ATTACHMENT 1\"=1'-0"



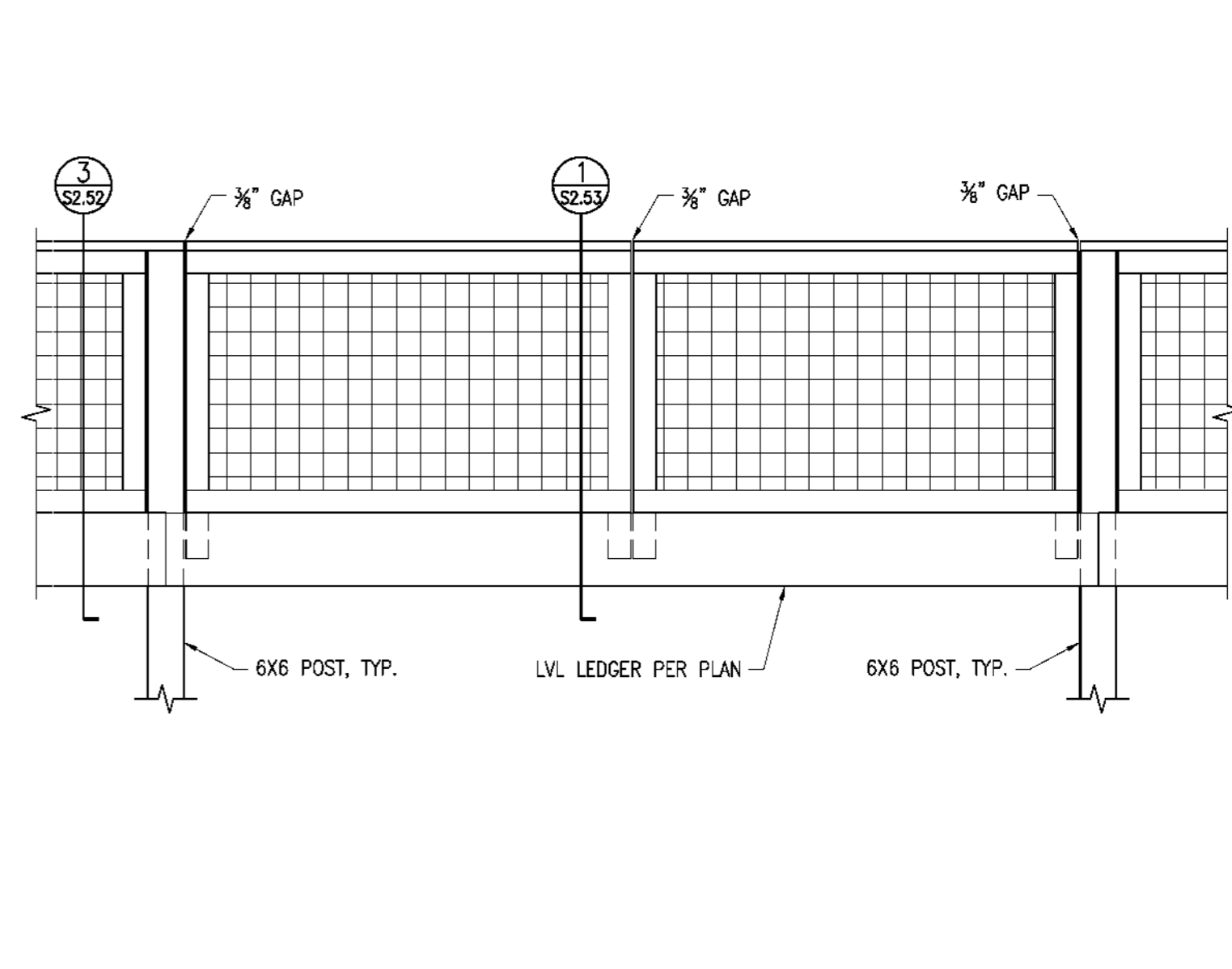
12 REMOVABLE RAILING ELEVATION 1/2\"=1'-0"



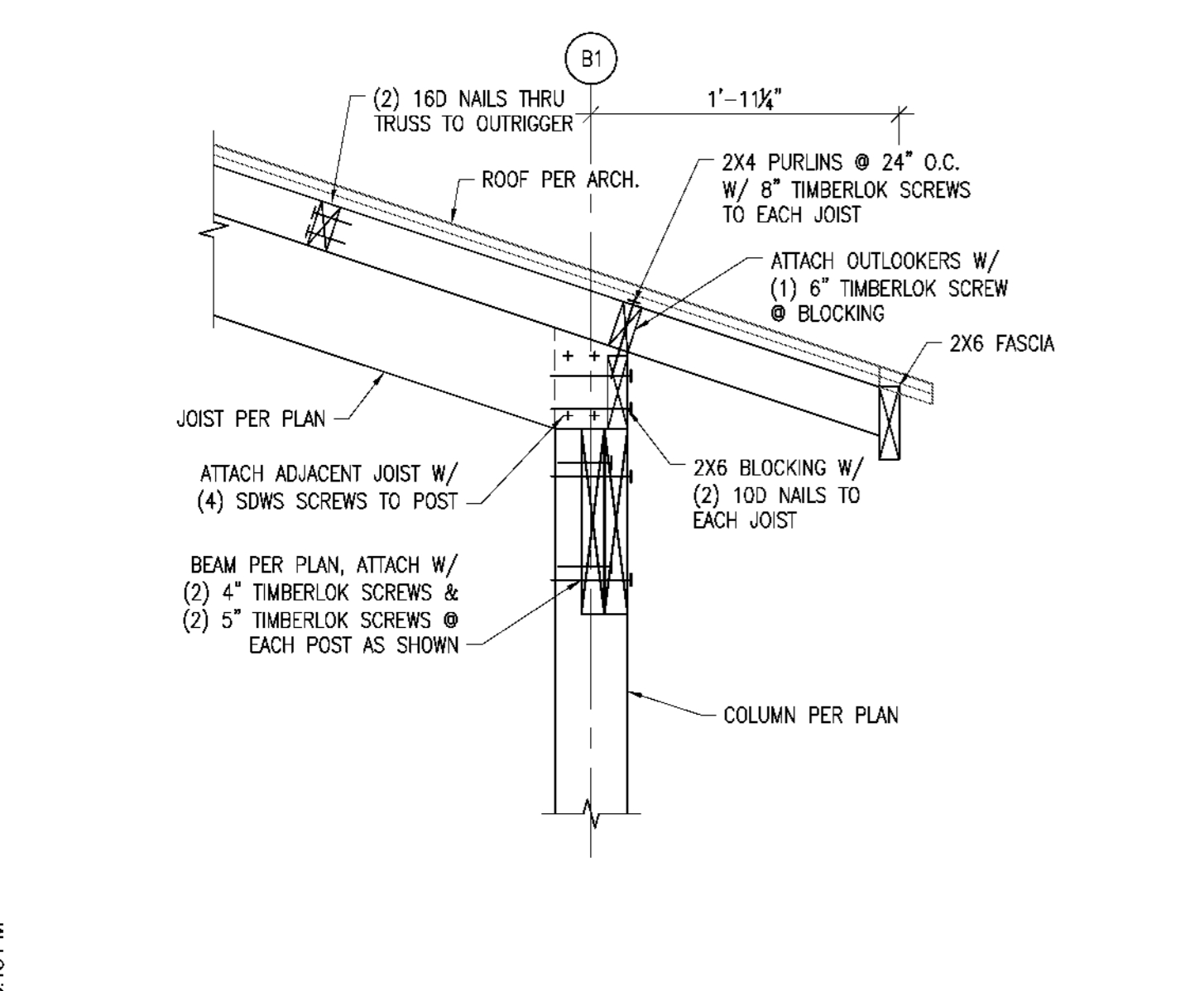
11 REMOVABLE RAILING ATTACHMENT 1\"=1'-0"



10 REMOVABLE RAILING ATTACHMENT AT CORNER 1\"=1'-0"



5 GREENHOUSE FRAMING ATTACHMENT 3/4\"=1'-0"



5 GREENHOUSE FRAMING ATTACHMENT 3/4\"=1'-0"

10/18/2017 6:18 PM