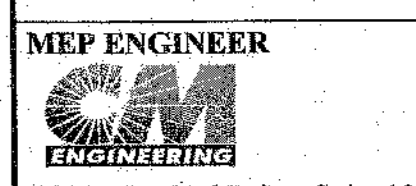


Architecture
Interior Design
Planning
Sustainability
2801 Woodard Drive, Suite 103
Columbia, MO 65202
573.443.1407
www.soa-inc.com

Missouri Certificate of Authority Number: 000826



MEP ENGINEER
2801 Woodard Drive, Suite 105
Columbia, MO 65202
573.443.1407

STRUCTURAL ENGINEER
McCLURE ENGINEERING, PC
1901 Pennsylvania Dr,
Columbia, MO 65202
573.814.1568
MO COA No. E-2006023253
Exp. December, 31 2018

City of Columbia Parks and Recreation Department
Clary Shy Agriculture Park
1751, 1769, & 1857 WEST ASH ST
COLUMBIA, MO 65203

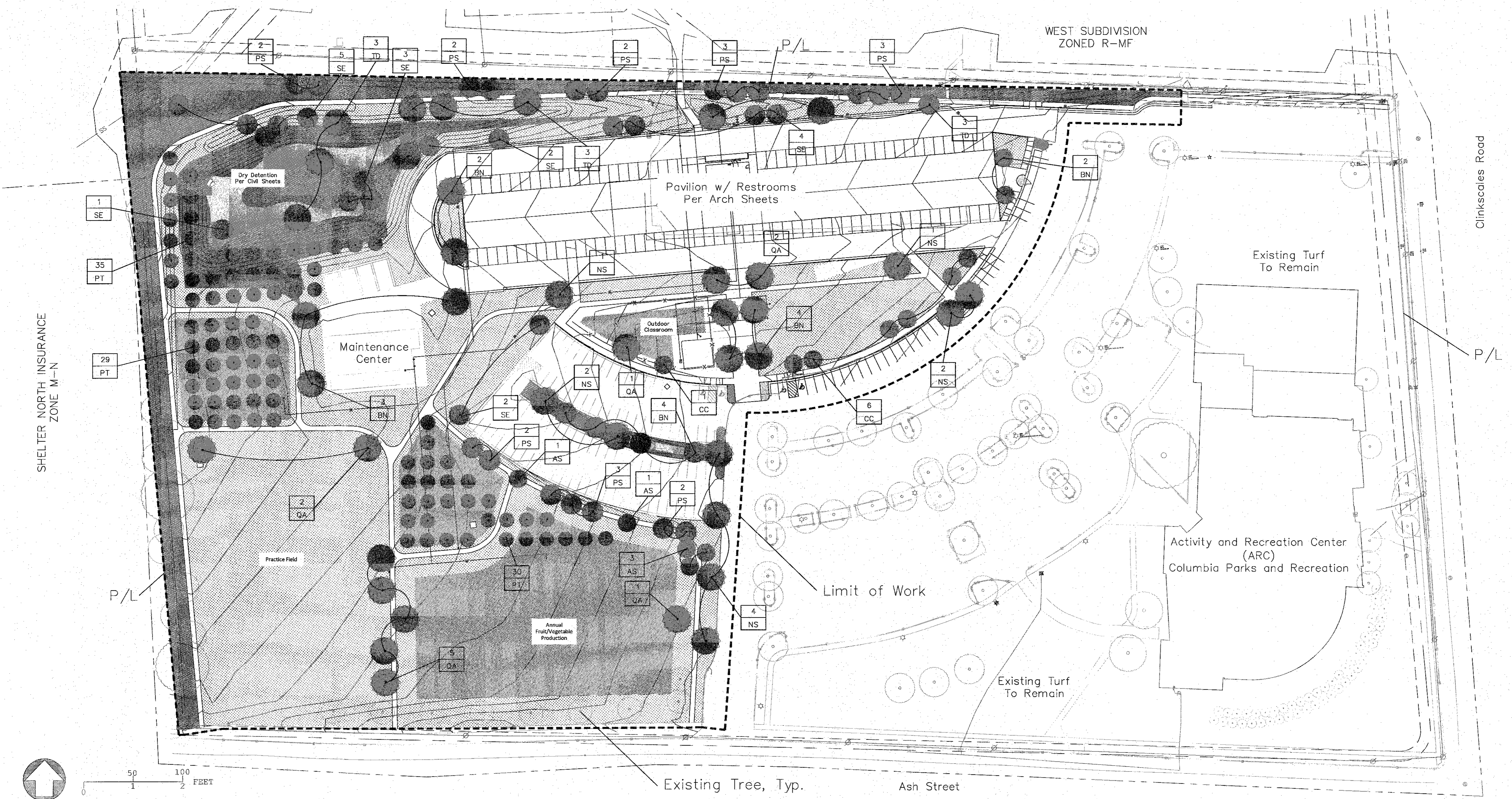
ISSUE FOR PERMIT	
October 19, 2017	
REVISION	DATE

Landscape Plan

L1.01

SOA PROJECT 16052

If you must print this drawing, please recycle



LANDSCAPE LEGEND - TREES (QTY are for Project Totals)

ID	Description	Size (Caliper) /QTY	ID	Description	Size (Caliper) /QTY
AS	Amelanchier arborea Downy Serviceberry	2"/5	SE	Salix eriocephala River Willow	2"/18
QA	Quercus alba White Oak	3"/11	PS	Pinus strobus Eastern White Pine	3"/19
CC	Cercis canadensis Eastern Redbud	2"/9	TD	Taxodium distichum var. imbricarium Pond Cypress	2"/9
NS	Nyssa sylvatica Black Gum	3"/10	PT	Production Tree (TBD)	2"/94
BN	Betula nigra 'Heritage' River Birch	2"/13		Pecan, Apple, Pear, Peach Hazelnut, Walnut	

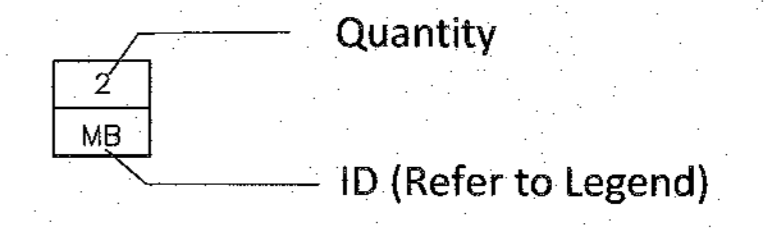
LANDSCAPE LEGEND - GROUNDCOVER/SHRUB LIST

Hazelnut	Currant
Elderberry	Viburnum Species
Blackberry	Little Bluestem
Raspberry	Ninebark
Gooseberry	Coneflower species
Turfgrass	
Festuca arundinacea 'Rebel II' (Sod)	28,250 SF
Festuca arundinacea 'Rebel II' (Seed)	83,000 SF
Landscape Mulch (Production Areas)	180,000 SF
Native Seed Mix	180,000 SF
Rainbow Rock Groundcover	4,500 SF

Notes:

- Per 29-25 (e)(1): Minimum 15% of site must be landscaped. Total Land Area is Approximately 19.2 acres. Zoning: District Park and Open Space. Per the Proposed Site Plan (See Engineering Sheets), THE MINIMUM PERCENTAGE OF THE SITE TO BE MAINTAINED IN OPEN SPACE (FULLY DEVELOPED) IS 46%. % IN LANDSCAPING = 30% % IN EXISTING VEGETATION = 16%
- Per 29-25 (e)(3): Landscape Buffer Strip between Parking Lot and ROW. For property edge buffering requirements, site shall be considered mixed-used. Variance Granted in 2009, 29-4.4(e), to allow no additional screening on North Property Line.
- Per 29-35 (e)(4): For every 4,500 SF of new paved areas, (1) tree shall be required.

Tree Callout Guide



* Tree Planting Detail per City Standard 1000.09 as applicable