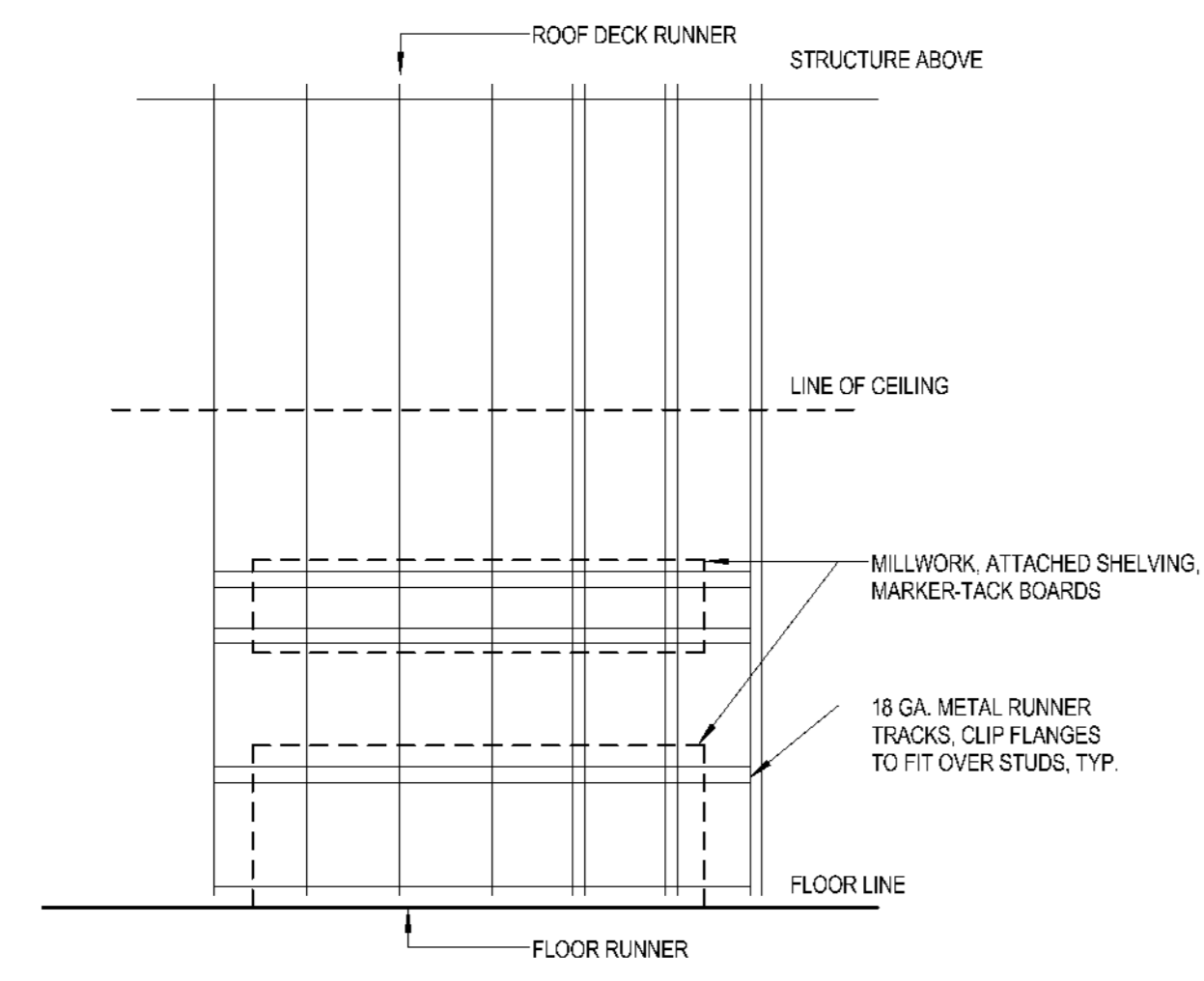
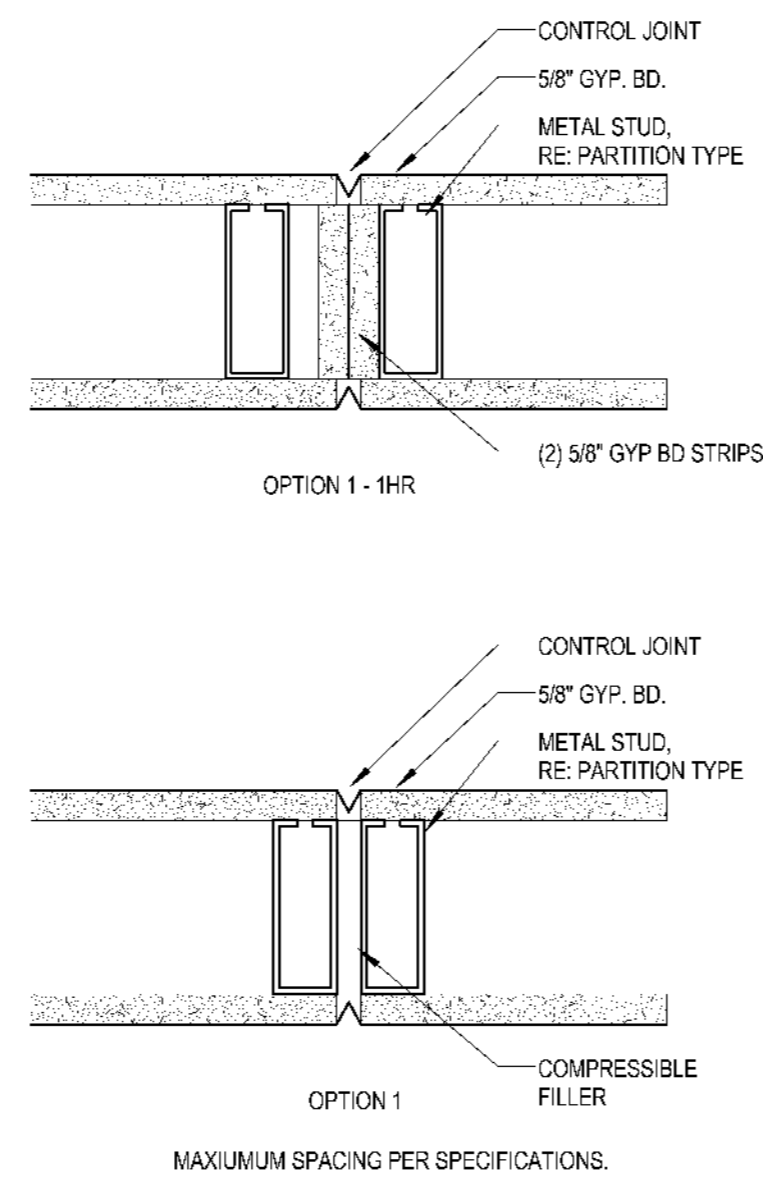


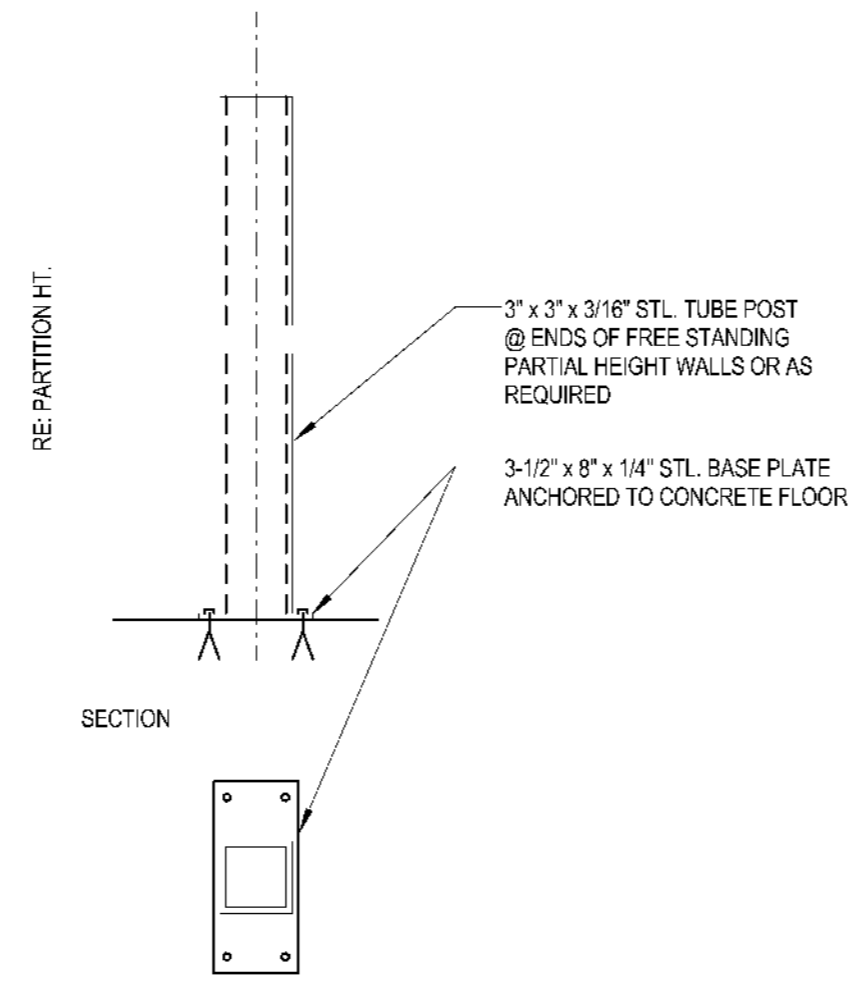
G2
G104
SCALE: 1/4" = 1'-0"



K2
G104
SCALE: 1/4" = 1'-0"

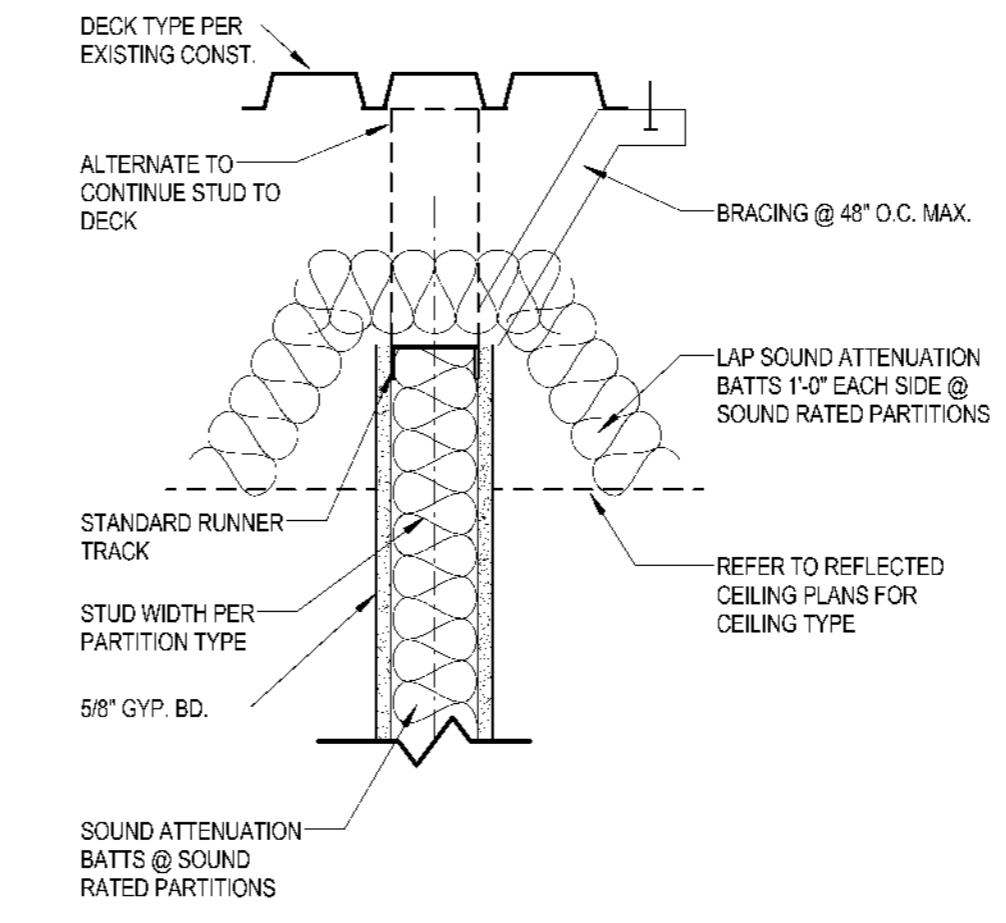


G8
G104
SCALE: 3" = 1'-0"



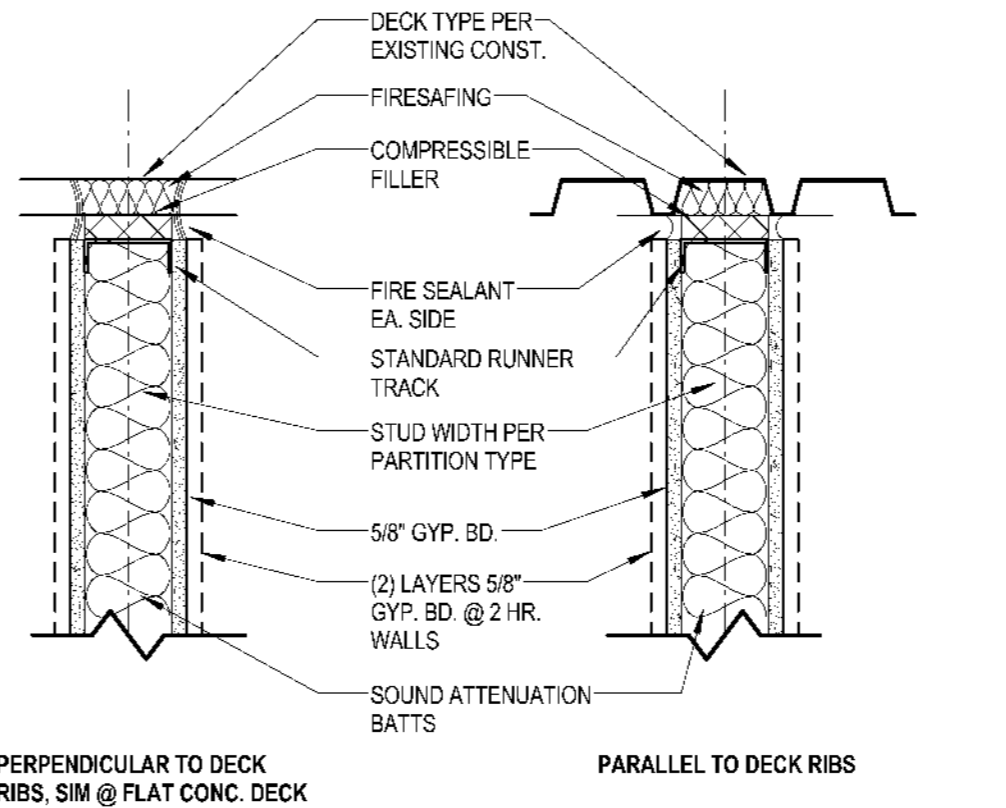
(PARTITION - FREE STANDING SUPPORT)

K8
G104
SCALE: 1 1/2" = 1'-0"

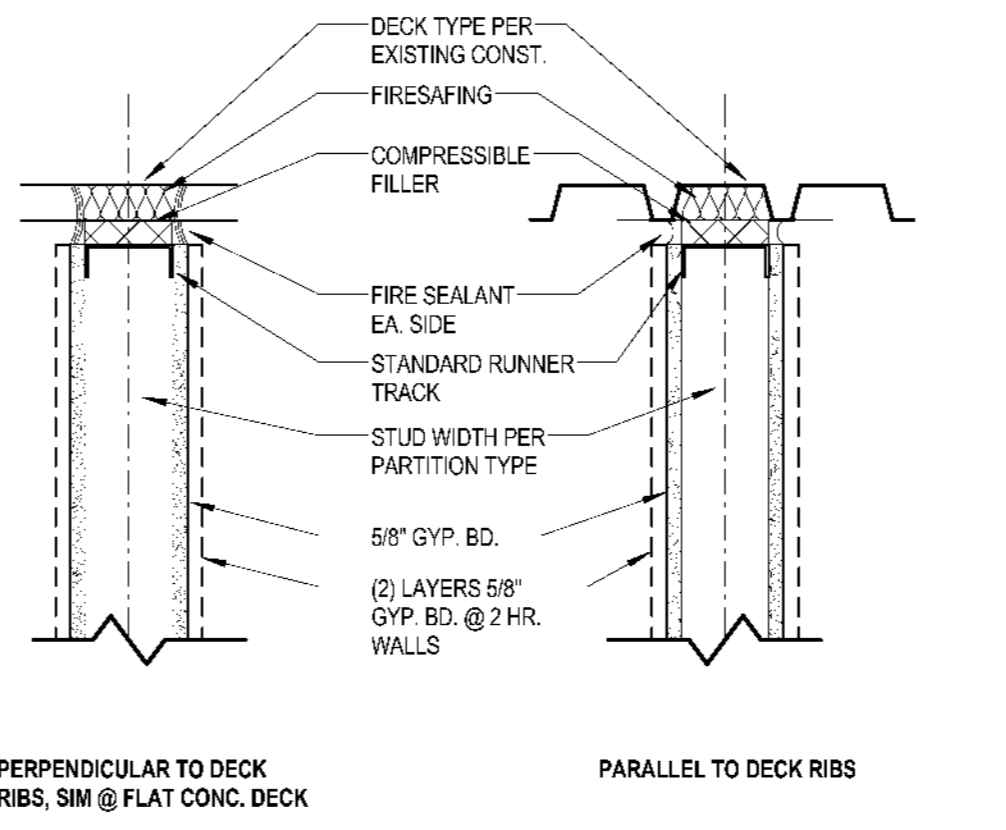


(PARTITION TERMINATED ABOVE CEILING - ACOUSTIC AND NON-ACOUSTIC SHOWN)

D13
G104
SCALE: 1 1/2" = 1'-0"

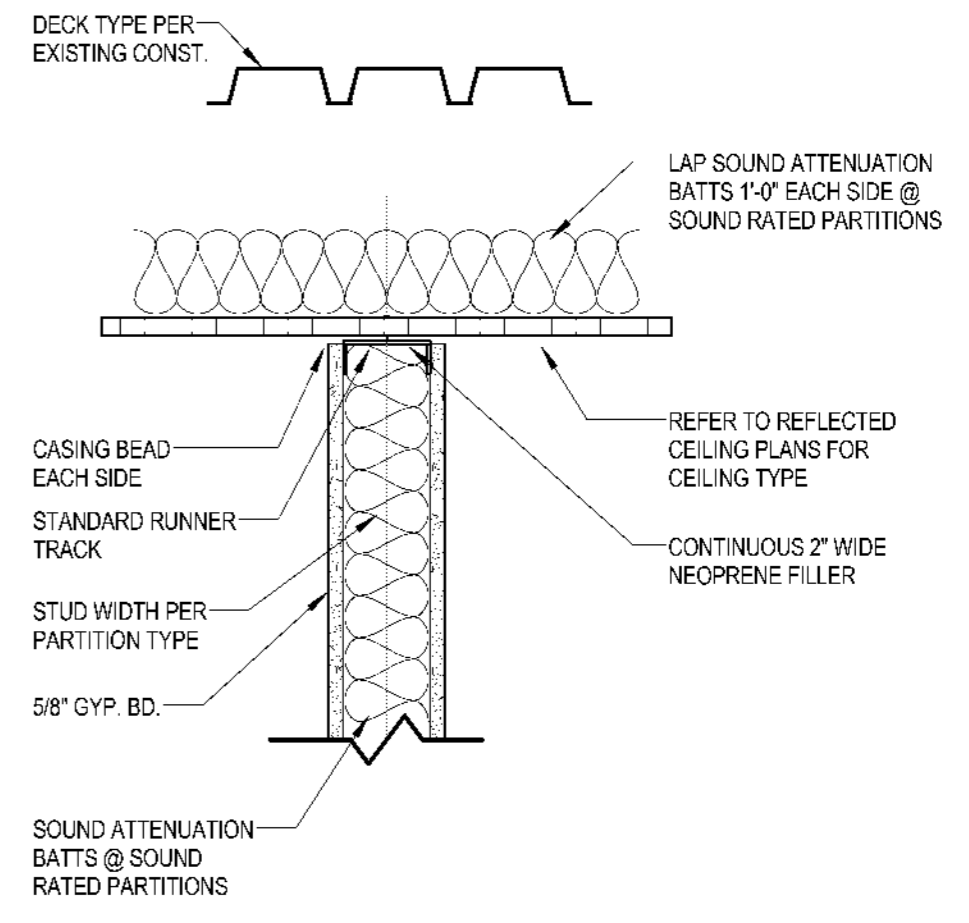


(PARTITION TO DECK - ACOUSTIC AND FIRE RATED)



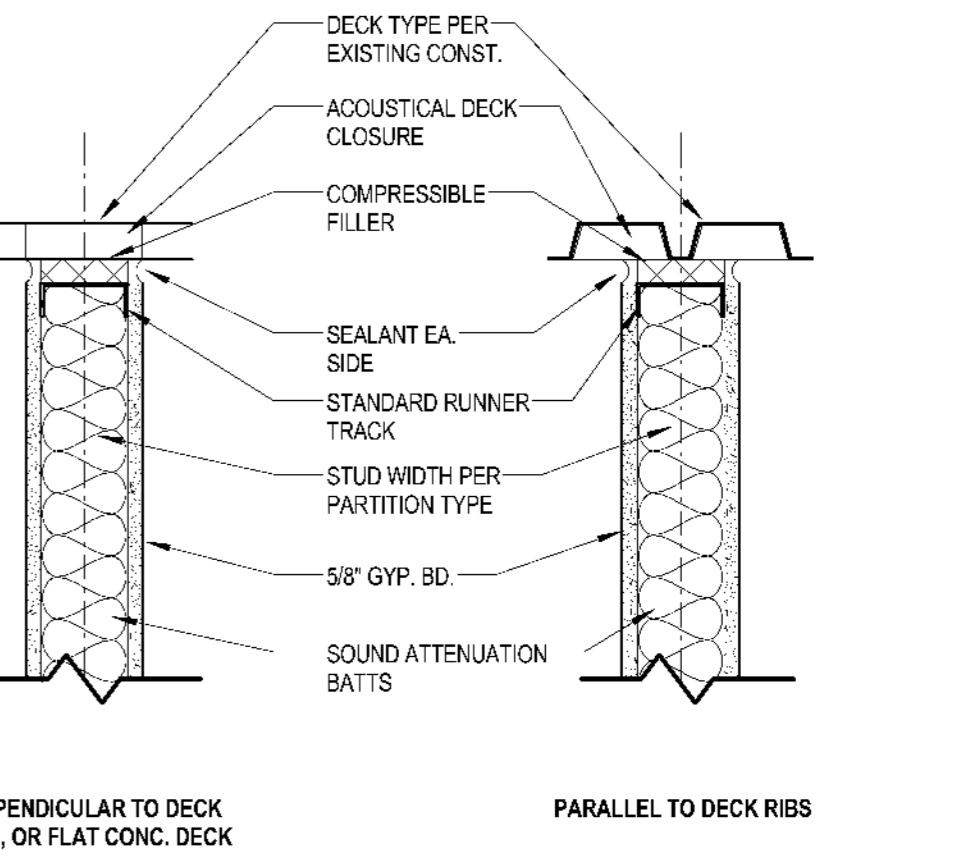
(PARTITION TO DECK - FIRE RATED)

K13
G104
SCALE: 1 1/2" = 1'-0"

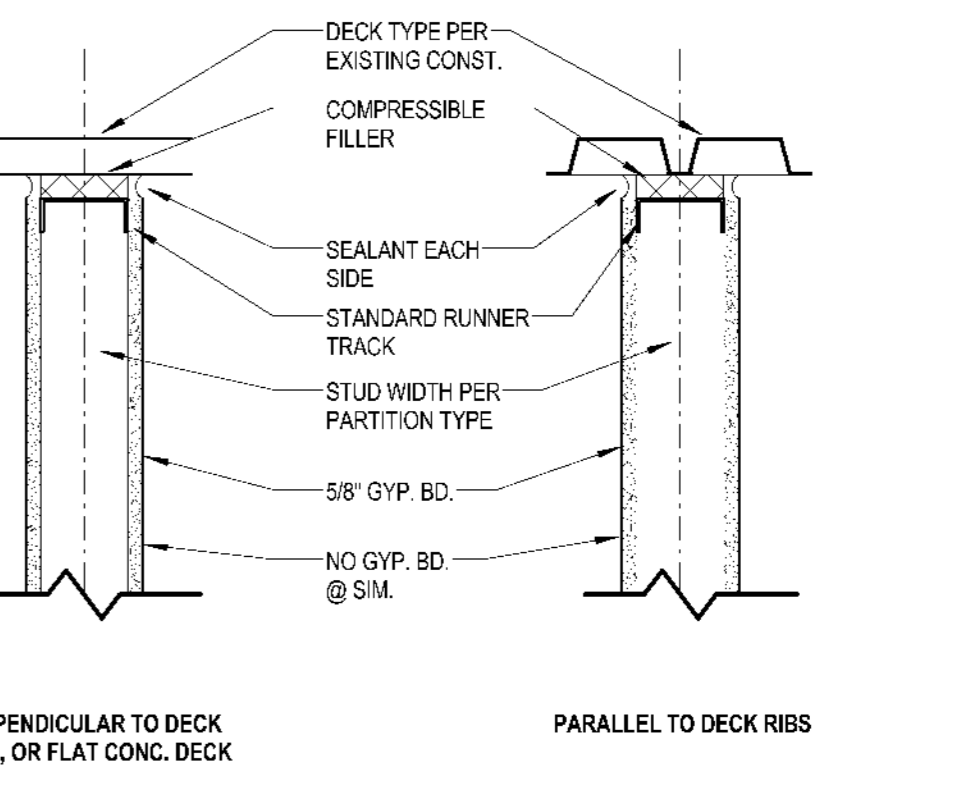


(PARTITION TERMINATED @ CEILING - ACOUSTIC AND NON-ACOUSTIC SHOWN)

D18
G104
SCALE: 1 1/2" = 1'-0"

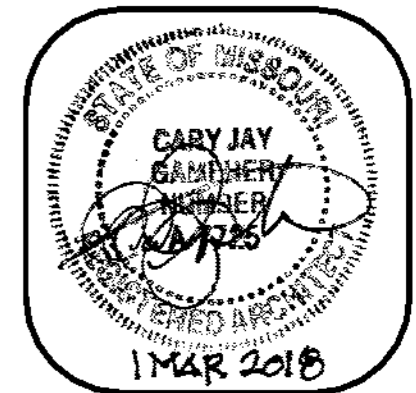


(PARTITION TO DECK - ACOUSTIC RATED)



(PARTITION TO DECK)

K18
G104
SCALE: 1 1/2" = 1'-0"



MIDWEST ENGINEERING & DESIGN
MECH / ELEC / PLUMBING ENGINEER
Missouri State Certificate of Authority #2010032467

The Architects Alliance inc.
Missouri State Certificate of Authority # 000143
631 West Main Street
Jefferson City, Missouri
(573) 636-5000 phone

PARTITION DETAILS

JEFFERSON CITY MUNICIPAL COURT
RELOCATION AND RENOVATION
427 Monroe Street
Jefferson City, Missouri

PROJECT NO. 1637
DATE: 03-01-2018

G104