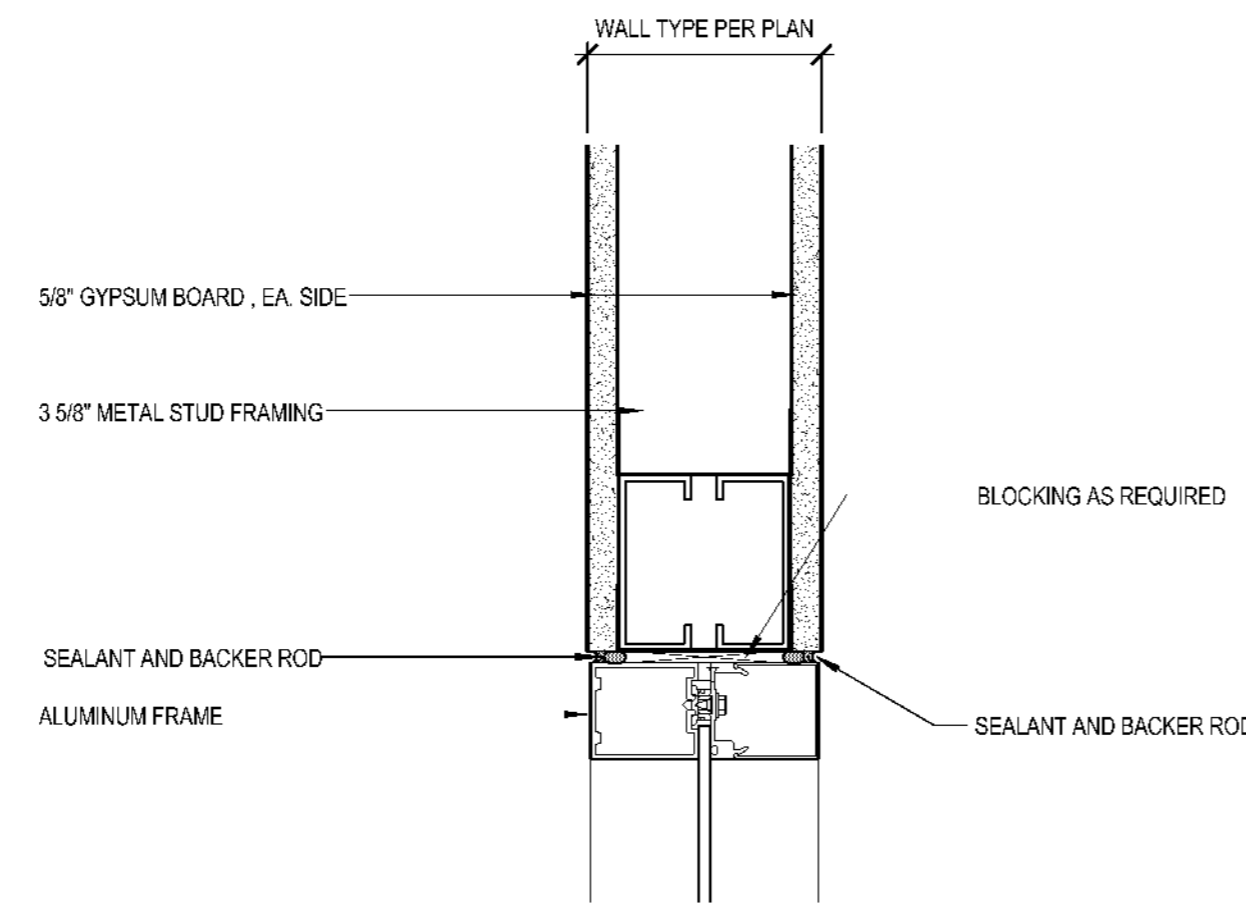
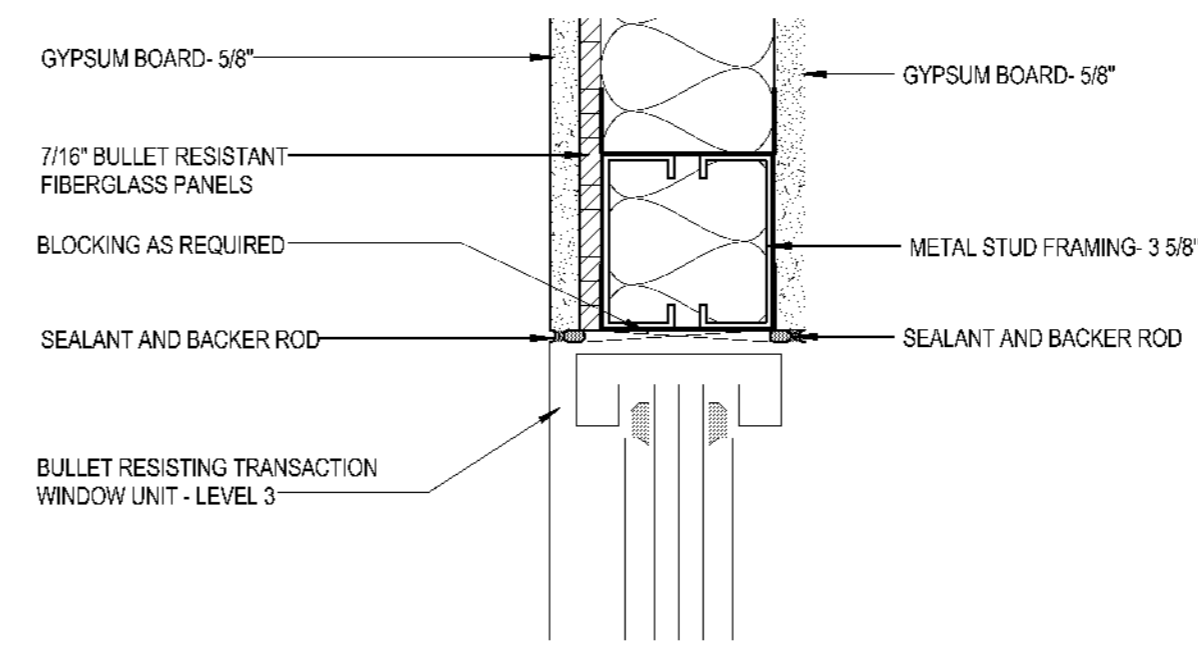


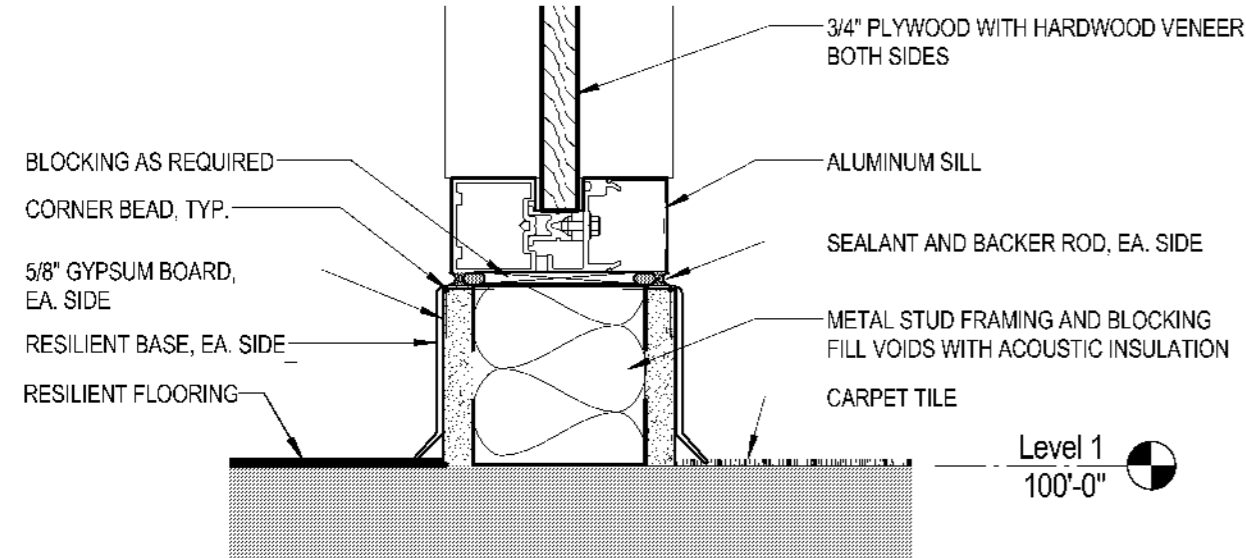
C2 ALUMINUM FRAME JAMB DETAIL
SCALE: 3" = 1'-0"



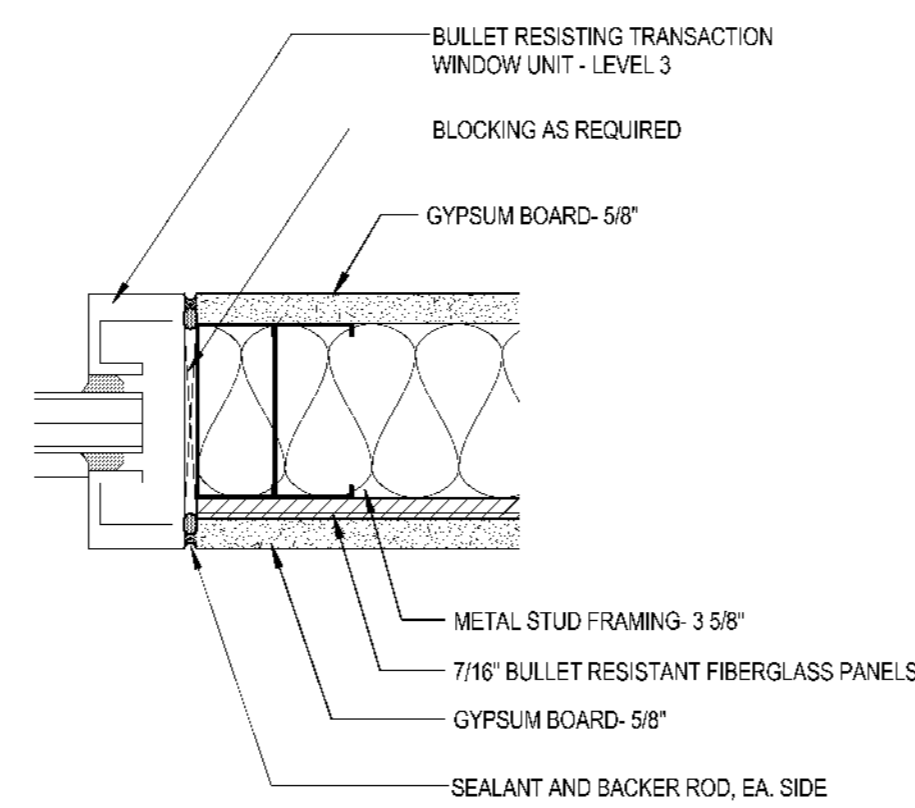
C8 ALUMINUM FRAME HEAD DETAIL
SCALE: 3" = 1'-0"



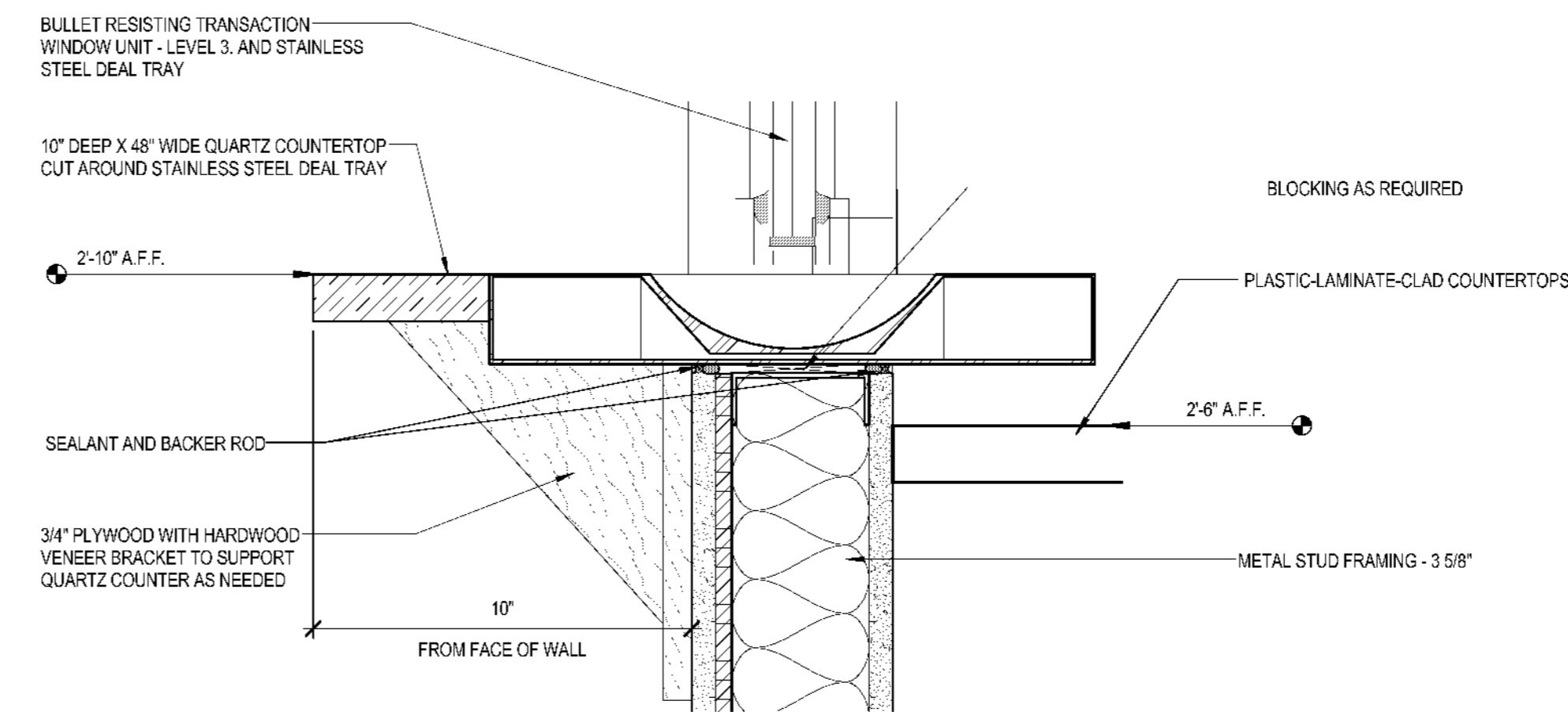
C13 TRANSACTION WINDOW HEAD DETAIL
SCALE: 3" = 1'-0"



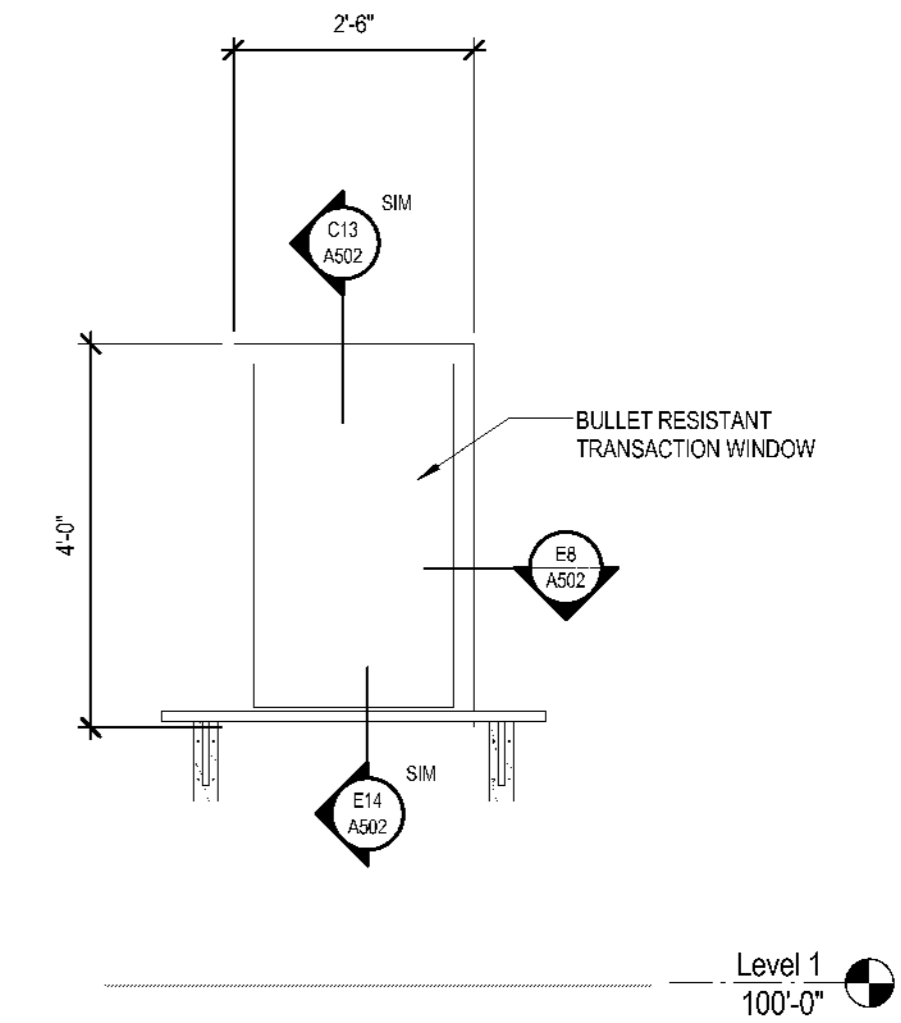
E2 SILL DETAIL AT RESILIENT BASE
SCALE: 3" = 1'-0"



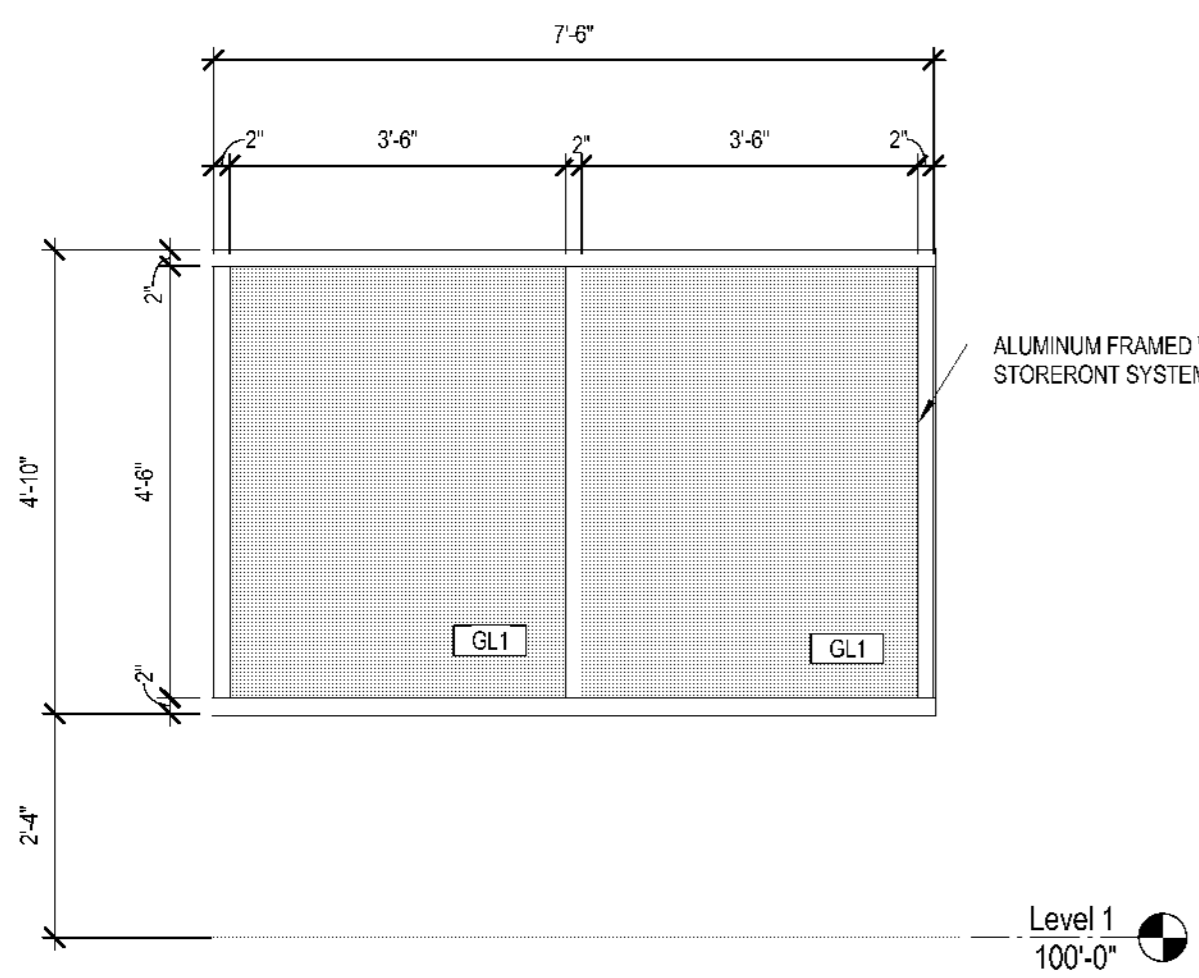
E8 TRANSACTION WINDOW JAMB DETAIL
SCALE: 3" = 1'-0"



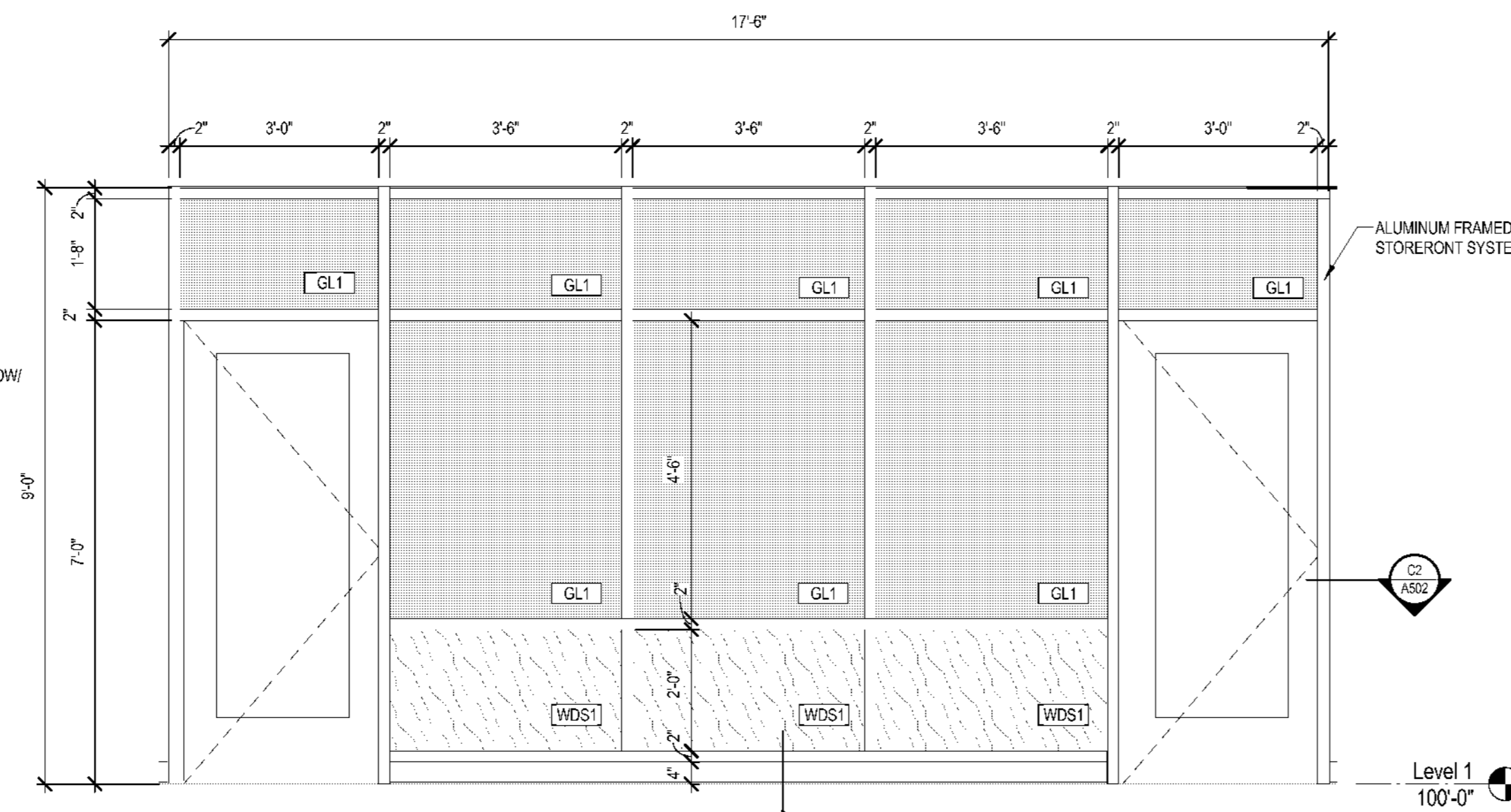
E14 TRANSACTION WINDOW SILL DETAIL
SCALE: 3" = 1'-0"



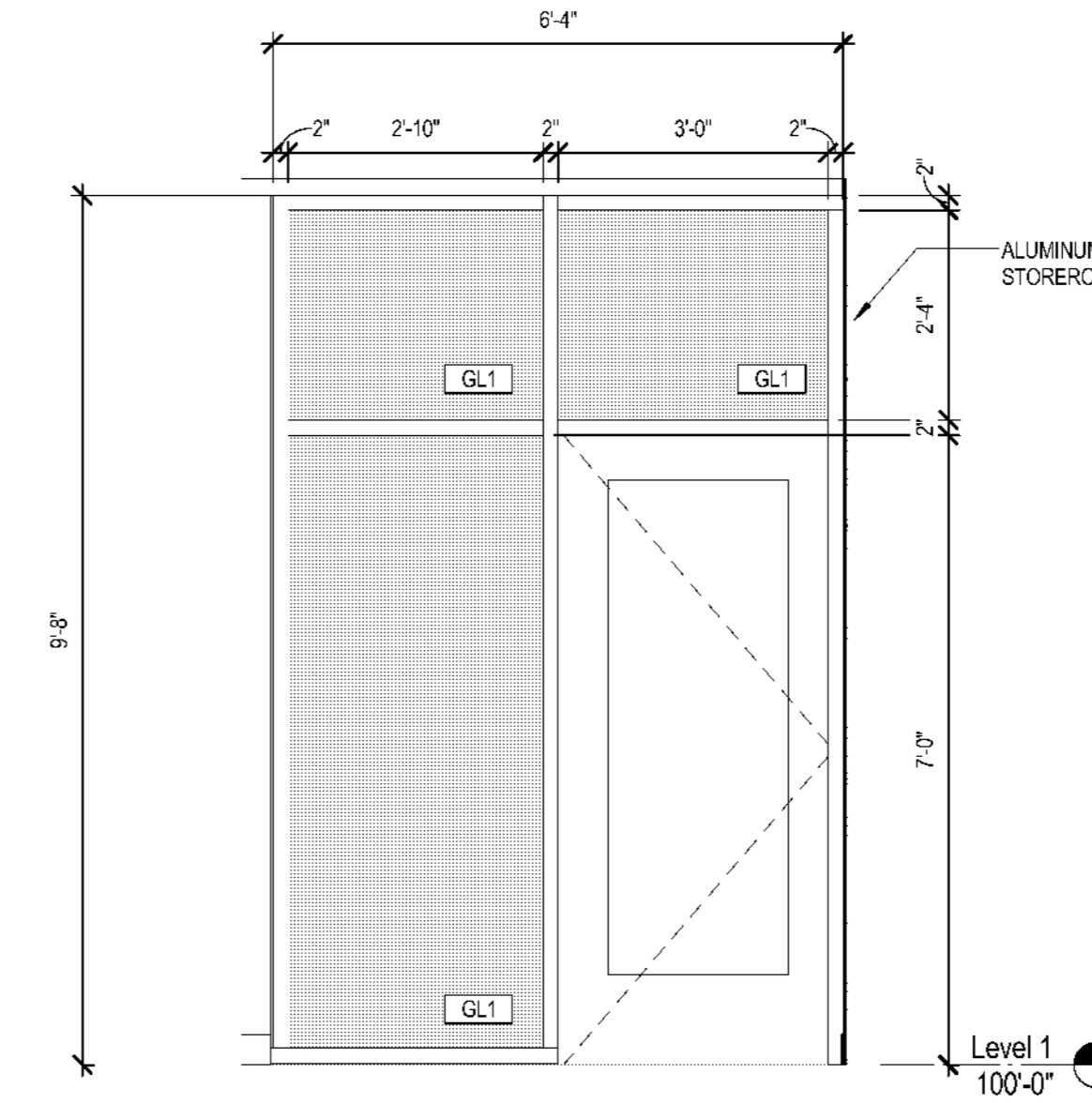
E18 TRANSACTION WINDOW ELEVATION 'E'
SCALE: 1/2" = 1'-0"



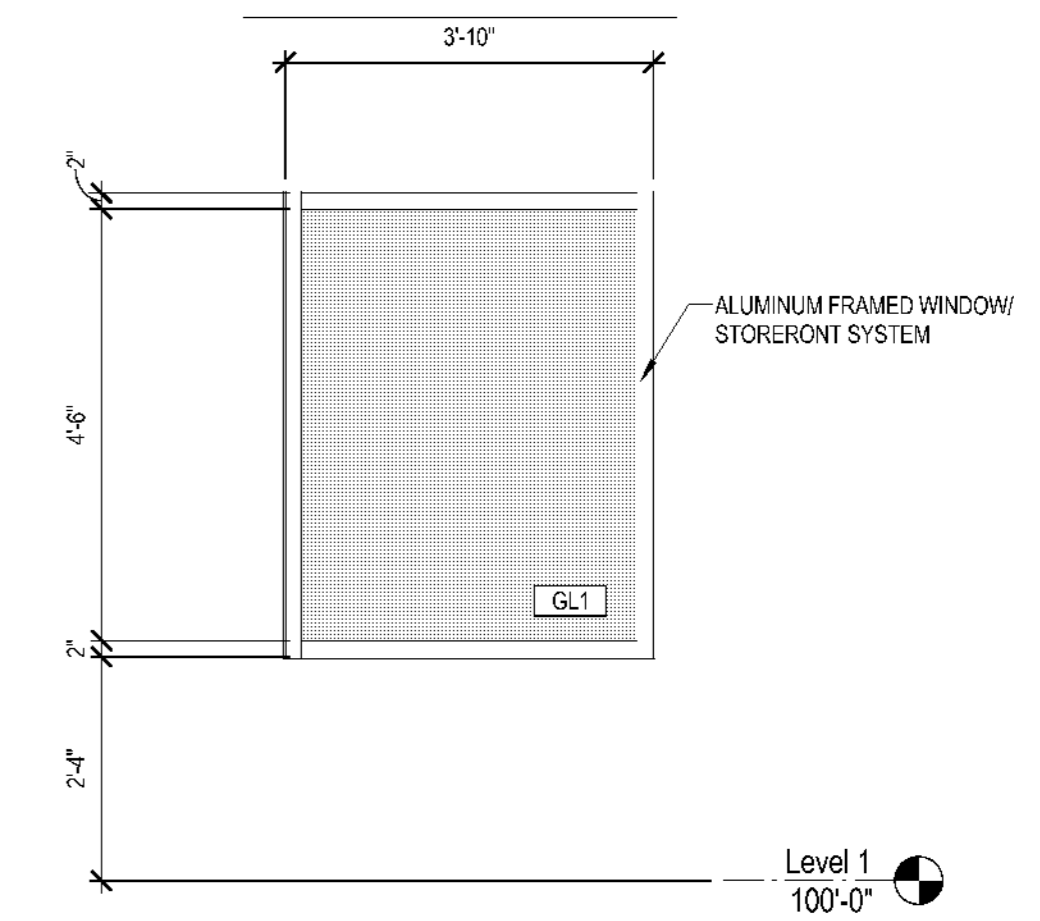
J1 STOREFRONT ELEVATION 'A'
SCALE: 1/2" = 1'-0"



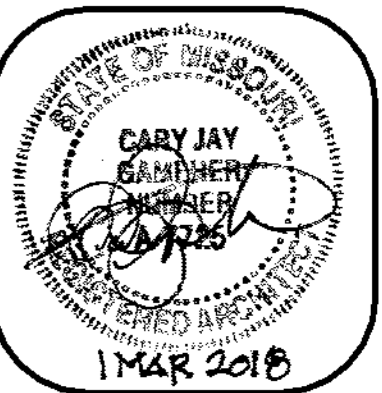
J6 STOREFRONT ELEVATION 'B'
SCALE: 1/2" = 1'-0"



J14 STOREFRONT ELEVATION 'C'
SCALE: 1/2" = 1'-0"



J16 STOREFRONT ELEVATION 'D'
SCALE: 1/2" = 1'-0"



MIDWEST ENGINEERING & DESIGN
MECH / ELEC / PLUMBING ENGINEER
Missouri State Certificate of Authority #2010032467

The Architects Alliance inc.
Missouri State Certificate of Authority # 000143
631 West Main Street
Jefferson City, Missouri
(573) 636-5000 phone

WINDOW TYPES AND DETAILS

**JEFFERSON CITY MUNICIPAL COURT
RELOCATION AND RENOVATION**
427 Monroe Street
Jefferson City, Missouri

PROJECT NO. 1637
DATE: 03-01-2018

A502