

MIDWEST ENGINEERING & DESIGN
 MECH / ELEC / PLUMBING ENGINEER
 Missouri State Certificate of Authority #2010032467

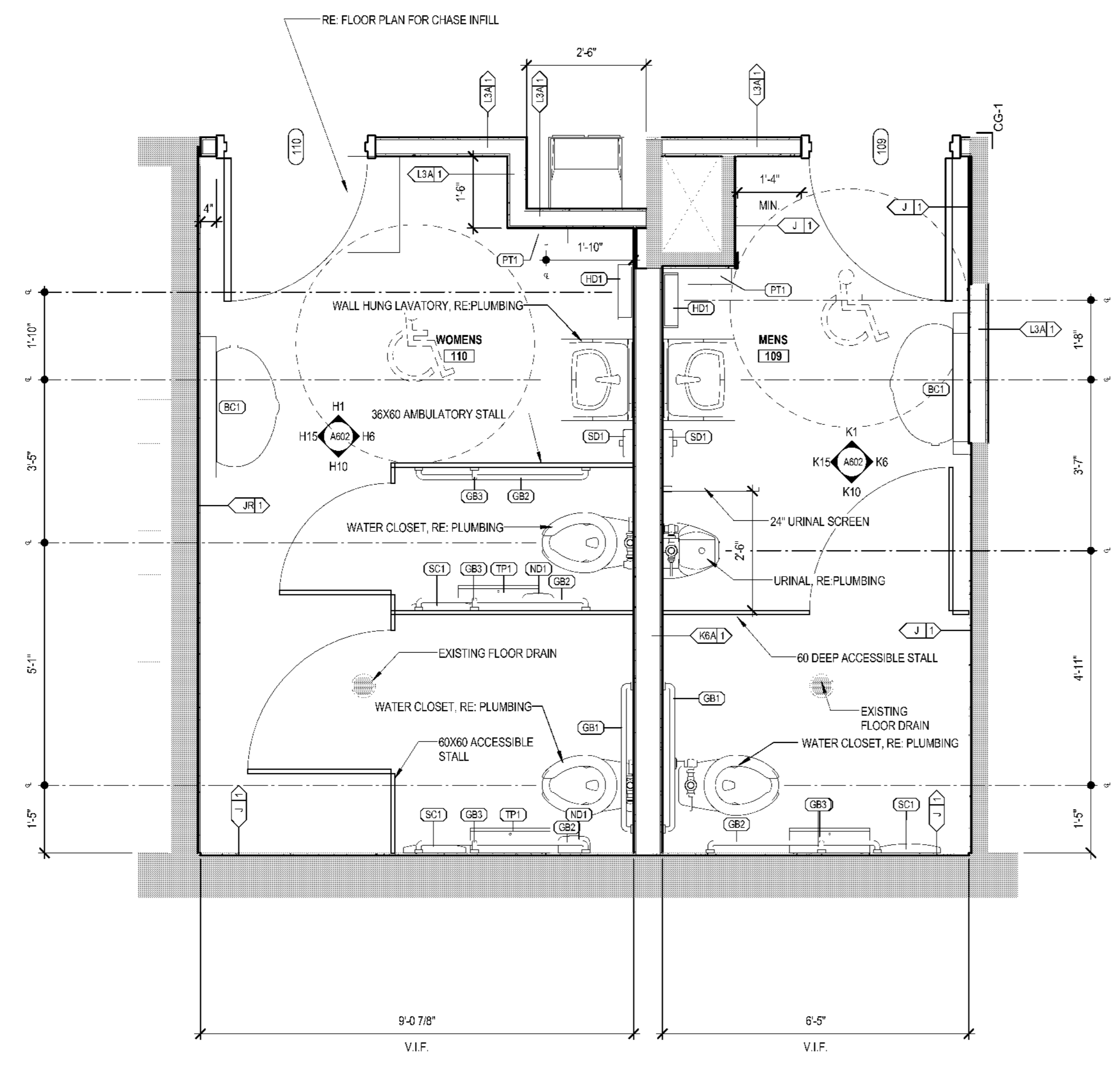
The Architects Alliance inc.
 Missouri State Certificate of Authority #000143
 631 West Main Street
 Jefferson City, Missouri
 (573) 636-5000 phone

ENLARGED RESTROOM PLANS AND ELEVATIONS

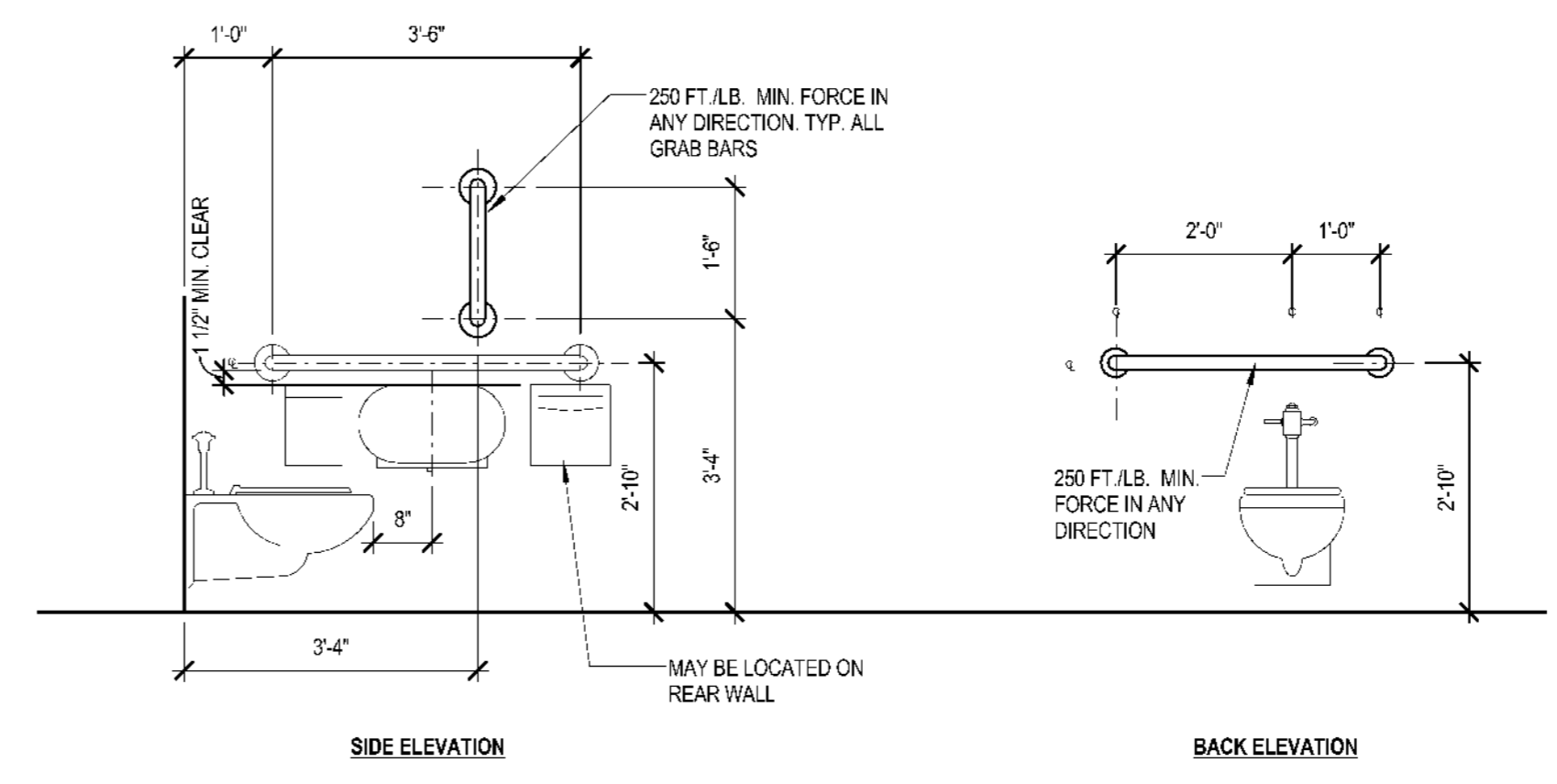
**JEFFERSON CITY MUNICIPAL COURT
 RELOCATION AND RENOVATION**
 427 Monroe Street
 Jefferson City, Missouri

PROJECT NO. 1637
 DATE: 03-01-2018

A602

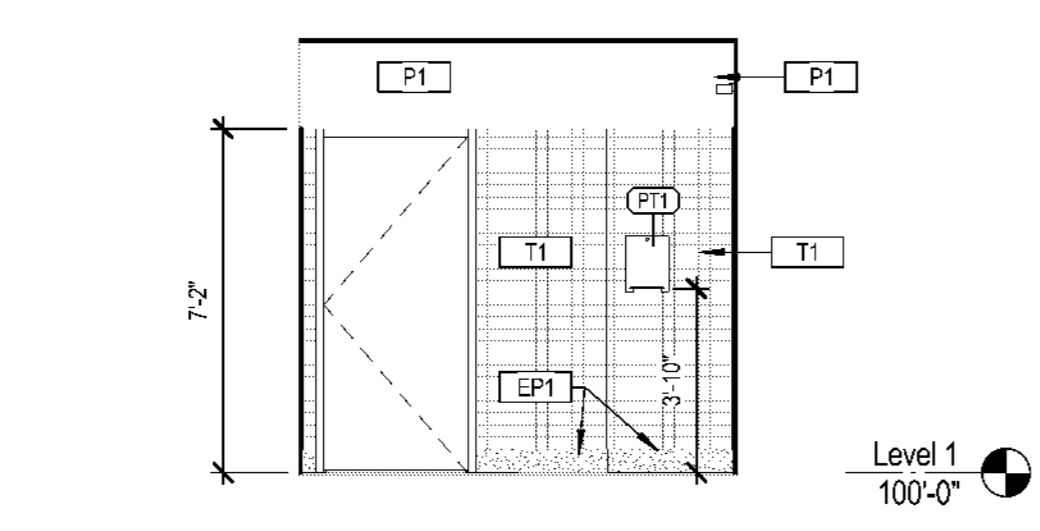


E3 ENLARGED PLAN- RESTROOMS
 SCALE: 1/2" = 1'-0"

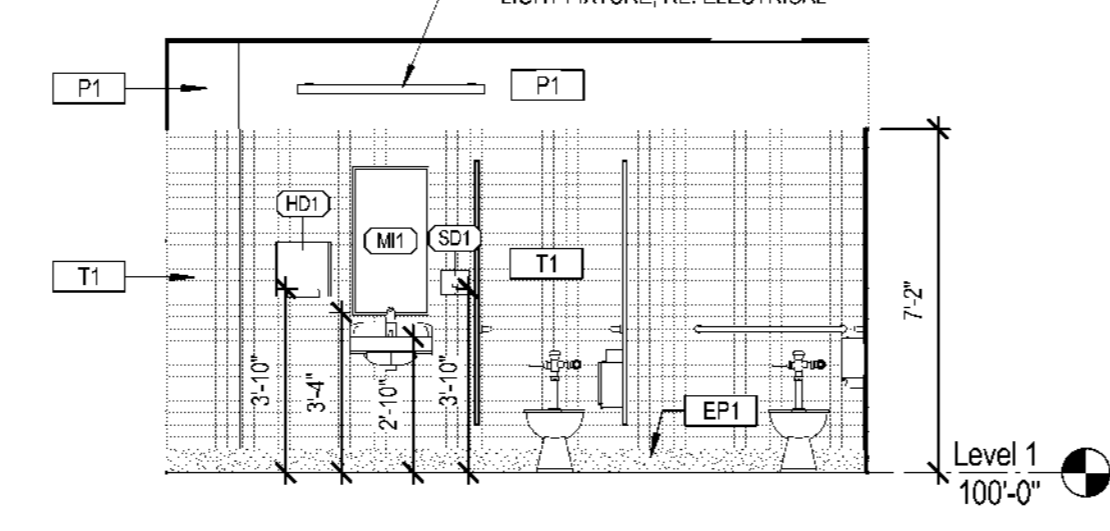


D14 MOUNTING HEIGHTS
 SCALE: 1/2" = 1'-0"

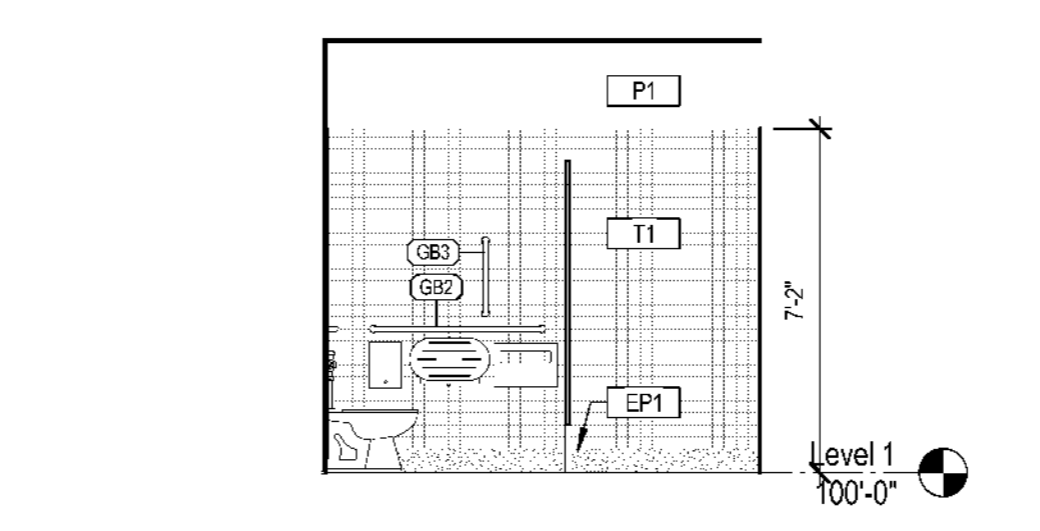
MARK	DESCRIPTION	MANUFACTURER- EQUAL TO	MODEL- EQUAL TO	COMMENTS	QTY
BC1	BABY CHANGING STATION	-	-		2
GB1	GRAB BAR- HORIZONTAL 36"	-	-	SALVAGE AND REUSE 2 FROM EXISTING	2
GB2	GRAB BAR- HORIZONTAL 42"	-	-	SALVAGE AND REUSE 2 FROM EXISTING	4
GB3	GRAB BAR- VERTICAL 18"	-	-		4
HD1	HAND DRYER	DYSON	AIRBLADE		2
M1	MIRROR	-	18"X36"		2
ND1	NAPKIN DISPOSAL	-	-	SURFACE MOUNTED	2
PT1	PAPER TOWER DISPENSER	BOBRICK	B-282		2
SC1	SEAT COVER DISPENSER	BOBRICK	B-4221		3
SD1	SOAP DISPENSER	BOBRICK	B-4112		2
TP1	TP DISPENSER	BOBRICK	B-288		3



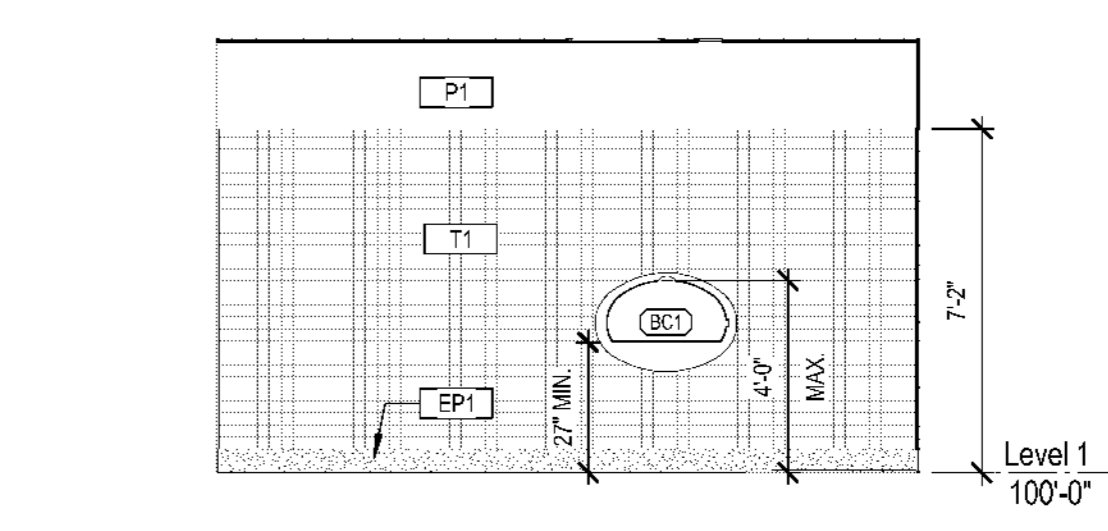
H1 ELEVATION- WOMENS 110 WEST
 SCALE: 1/4" = 1'-0"



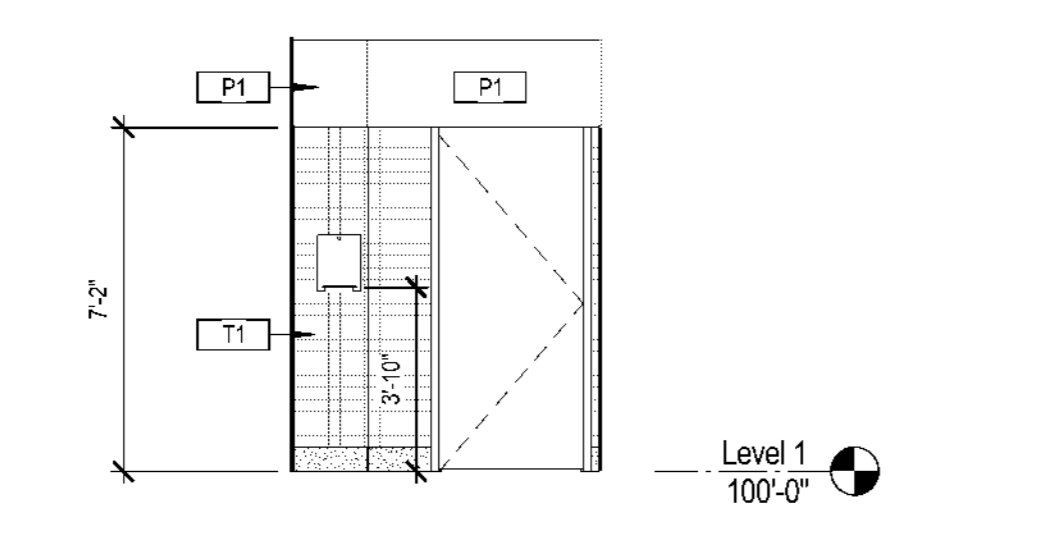
H6 ELEVATION WOMENS 110 NORTH
 SCALE: 1/4" = 1'-0"



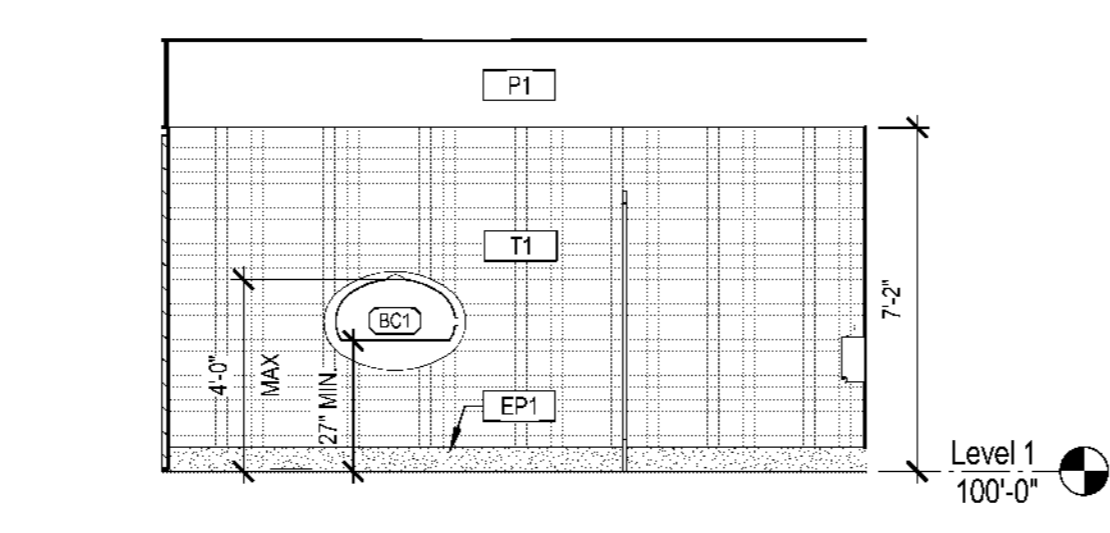
H10 ELEVATION- WOMENS 110 EAST
 SCALE: 1/4" = 1'-0"



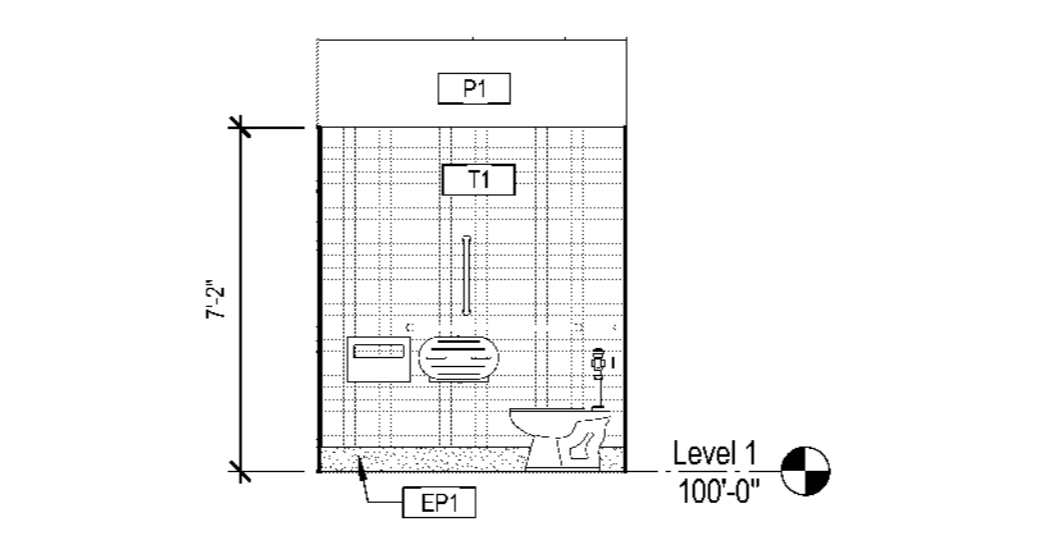
H15 ELEVATION- WOMENS 110 SOUTH
 SCALE: 1/4" = 1'-0"



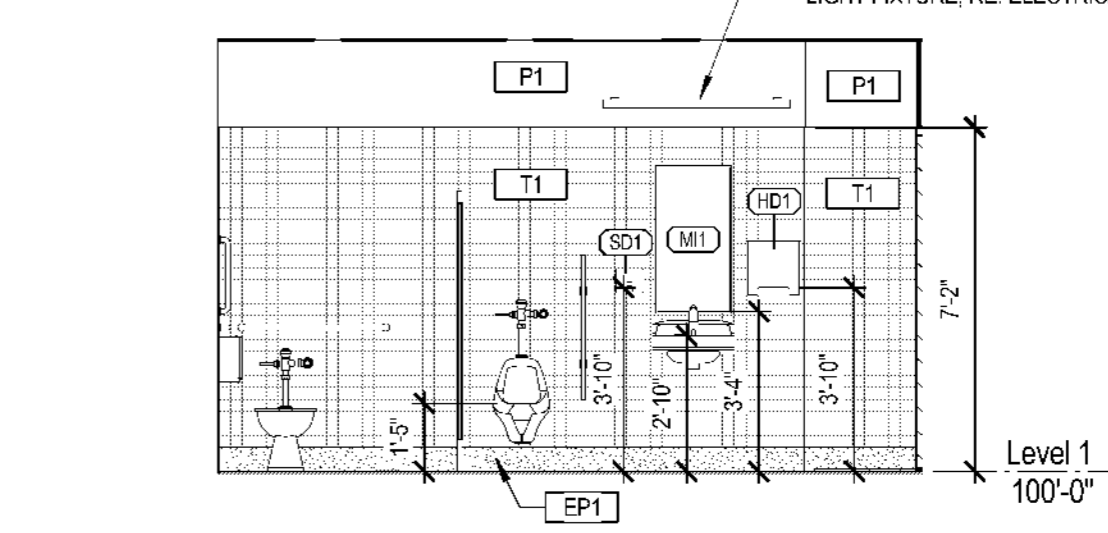
K1 ELEVATION- MENS 109 WEST
 SCALE: 1/4" = 1'-0"



K6 ELEVATION- MENS 109 NORTH
 SCALE: 1/4" = 1'-0"



K10 ELEVATION- MENS 109 EAST
 SCALE: 1/4" = 1'-0"



K15 ELEVATION- MENS 109 SOUTH
 SCALE: 1/4" = 1'-0"