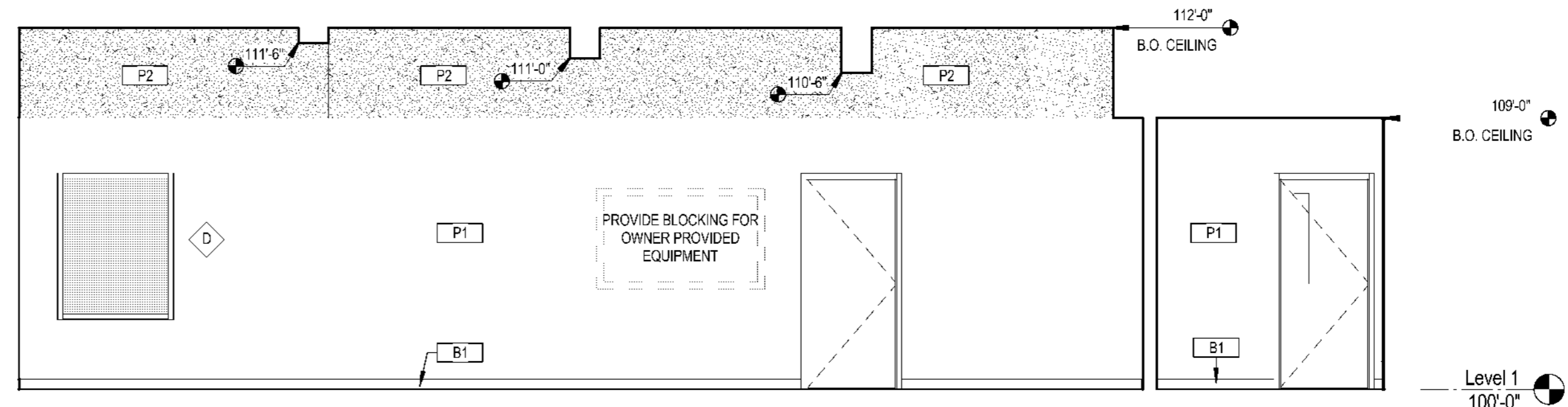


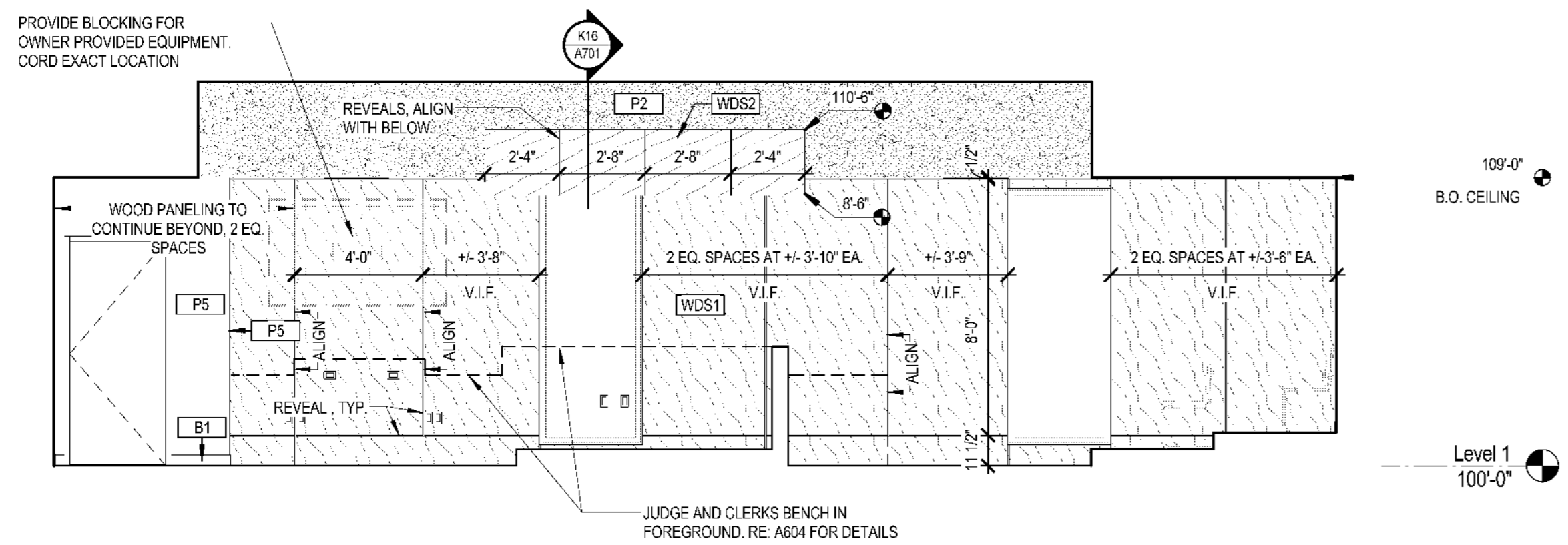
C2 ELEVATION- COURTROOM NORTH

SCALE: 1/4" = 1'-0"



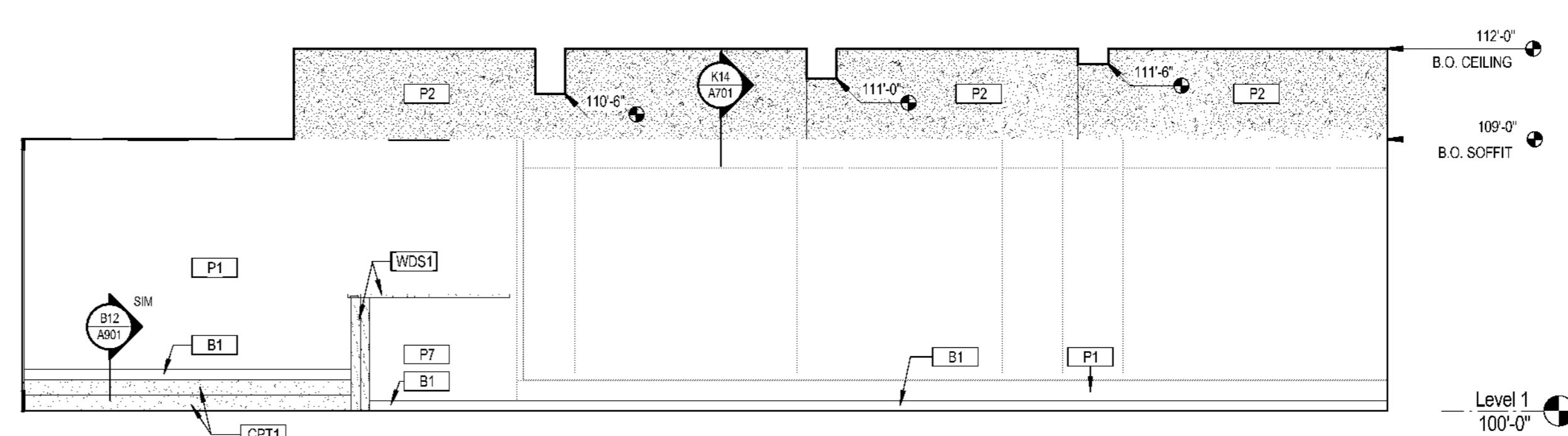
C10 ELEVATION- COURTROOM EAST

SCALE: 1/4" = 1'-0"



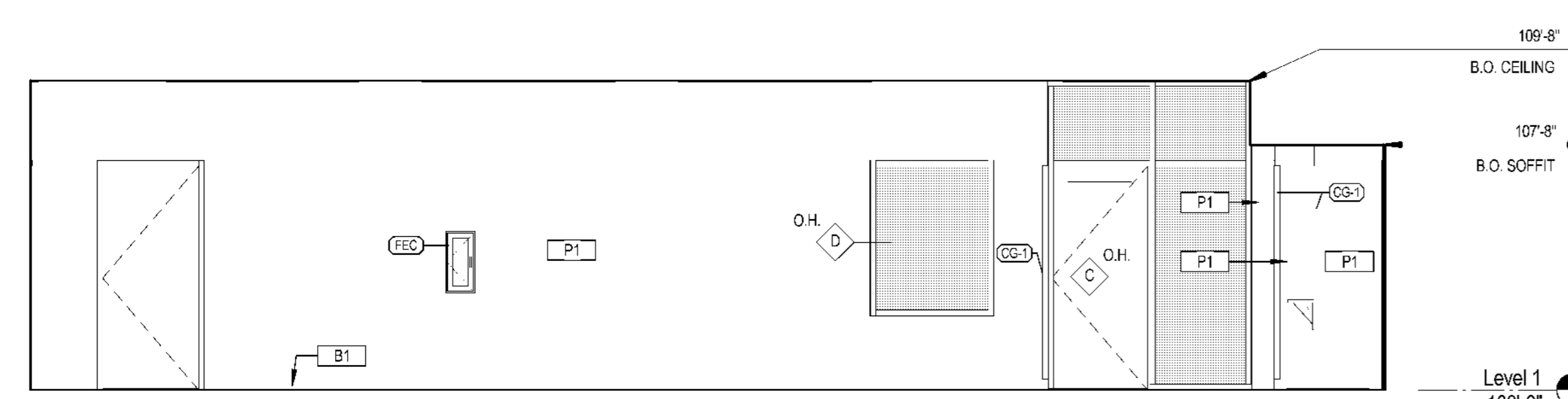
E2 ELEVATION- COURTROOM SOUTH

SCALE: 1/4" = 1'-0"



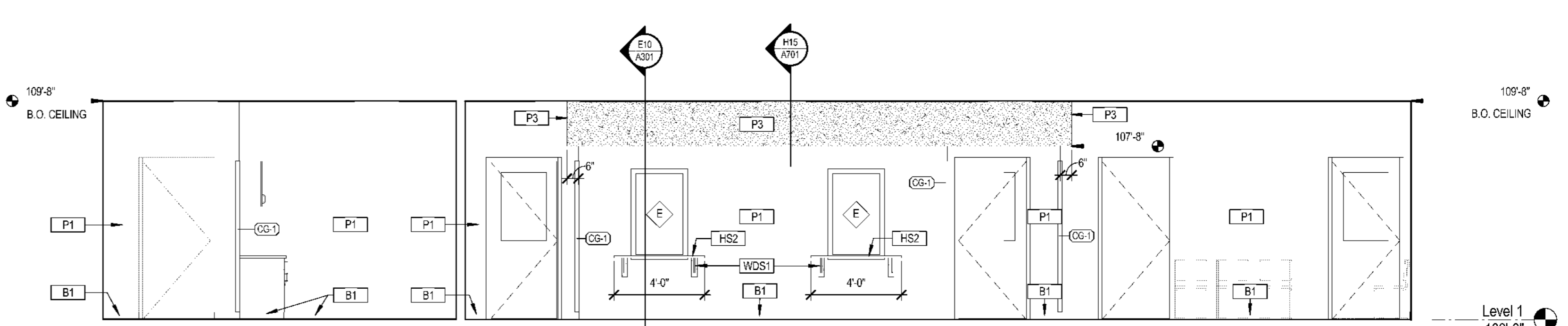
E10 ELEVATION- COURTROOM WEST

SCALE: 1/4" = 1'-0"



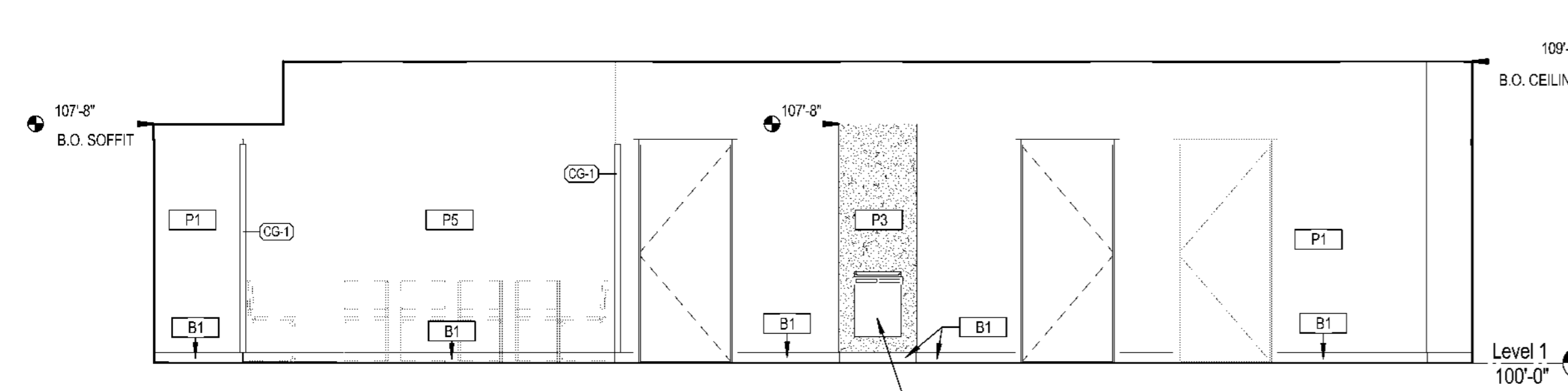
G2 ELEVATION- PUBLIC CORRIDOR WEST

SCALE: 1/4" = 1'-0"



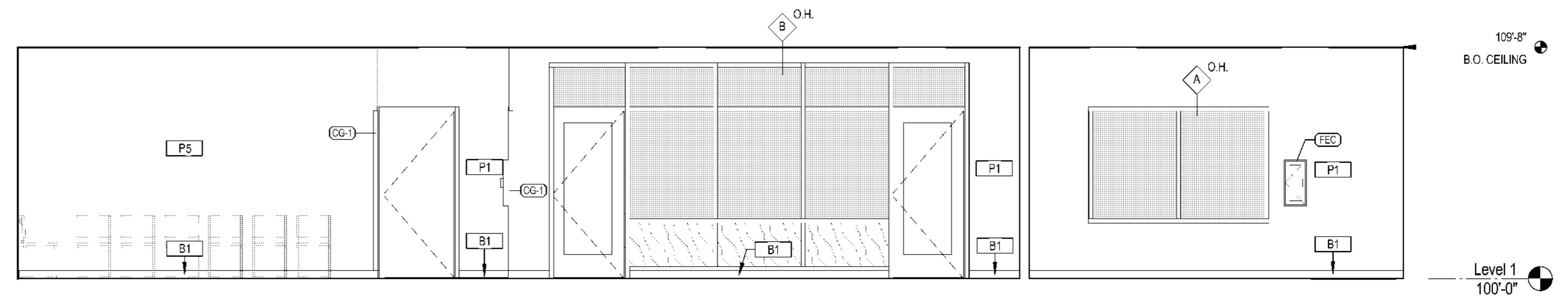
G11 ELEVATION- PUBLIC CORRIDOR/WAITING NORTH

SCALE: 1/4" = 1'-0"



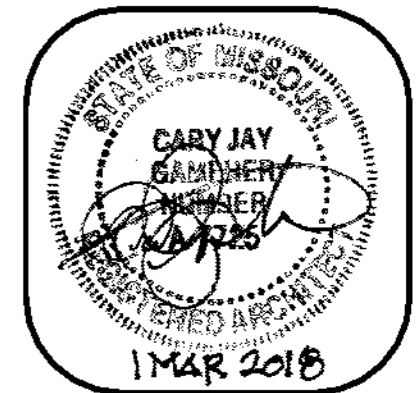
K2 ELEVATION- PUBLIC CORRIDOR/WAITING EAST

SCALE: 1/4" = 1'-0"



K11 ELEVATION- PUBLIC CORRIDOR/WAITING SOUTH

SCALE: 1/4" = 1'-0"



MIDWEST ENGINEERING & DESIGN
MECH / ELEC / PLUMBING ENGINEER
Missouri State Certificate of Authority #2010032467



INTERIOR ELEVATIONS

**JEFFERSON CITY MUNICIPAL COURT
RELOCATION AND RENOVATION**
427 Monroe Street
Jefferson City, Missouri

PROJECT NO. 1637
DATE: 03-01-2018
A603