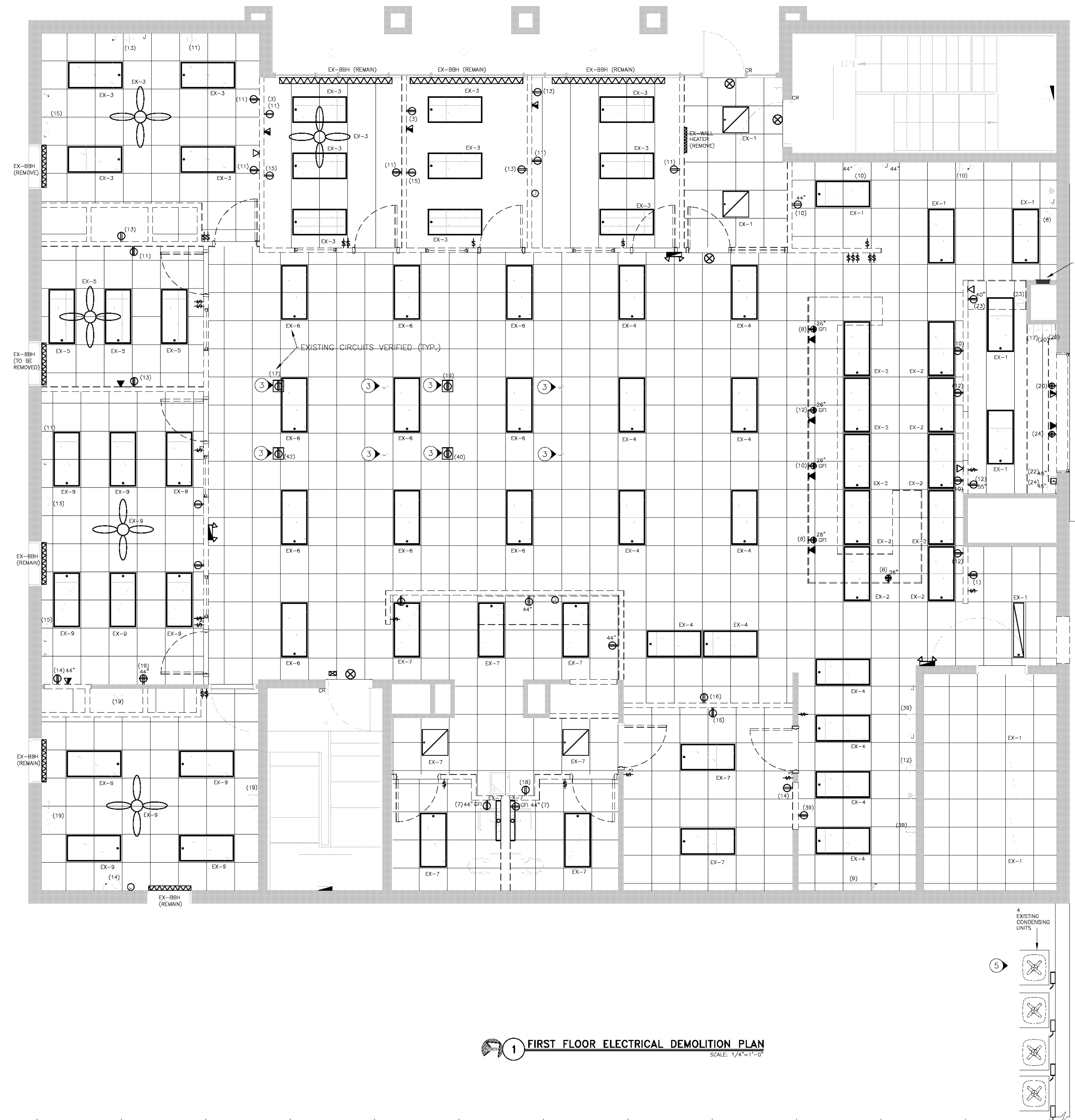


**NOTE**

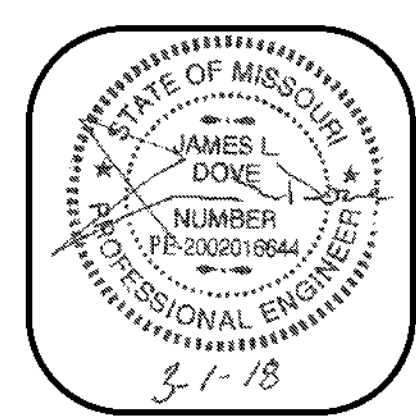
INDICATES KEYED NOTES

- 1 ALL ELECTRICAL DEVICES SHOWN ON WALLS BEING REMOVED ARE TO BE REMOVED (DASHED) ALONG WITH THE CONDUIT AND WIRING BACK TO NEAREST ACTIVE JUNCTION BOX OR ELECTRICAL PANEL. ELECTRICAL DEVICES ON EXTERIOR WALLS ARE TO REMAIN UNLESS SHOWN TO BE REMOVED. EXISTING CIRCUITING IS SHOWN WHERE KNOWN. ELC TO VERIFY ALL EXISTING CIRCUITING.
- 2 ALL EXISTING CEILING SECURITY DEVICES ARE NOT SHOWN BUT NEED TO BE REMOVED.
- 3 REMOVE EXISTING THRU FLOOR DEVICE AND SEAL PENETRATION.
- 4 ELC TO VERIFY CIRCUITING TO EXISTING BASEBOARD HEATERS. REMOVE UNIT THAT WILL BE IN JUDGES AREA AND JUROR'S AREA ALONG WITH WIRE AND ANY CONDUIT. CIRCUITS FOR REMAINING UNITS MAY HAVE BEEN ON THE LIGHTING OR POWER CIRCUIT TO THAT EXISTING INDIVIDUAL ROOM. ONCE HEATER CIRCUIT IS KNOWN, MARK IN ELECTRICAL PANEL SCHEDULE.
- 5 ELC TO REMOVE ALL EXISTING POWER FROM THE (4) EXISTING CONDENSING UNITS ON THE BACK SIDE OF THE BUILDING AT THE BASEMENT LEVEL. USE EXISTING UNDERGROUND CONDUITS IF AT ALL POSSIBLE. IF NOT POSSIBLE, CUT AND CAP CONDUIT AT GROUND LEVEL AND IN THE BUILDING AS WELL. SEE SHEET E104 FOR NEW ELECTRICAL REQUIREMENTS FOR THE (7) NEW CONDENSING UNITS BEHIND BUILDING AT BASEMENT LEVEL.



ELECTRICAL LEGEND	
[Symbol]	EXISTING ELECTRIC PANELBOARD (TO REMAIN)
[Symbol]	EXISTING RECESSED LIGHT FIXTURE (TO BE REMOVED)
[Symbol]	EXISTING RECESSED LIGHT FIXTURE (TO REMAIN)
[Symbol]	EXISTING SURFACE MOUNTED LIGHT FIXTURE (TO BE REMOVED)
[Symbol]	EXISTING SURFACE MOUNTED LIGHT FIXTURE (TO REMAIN)
[Symbol]	EXISTING CEILING FAN (TO BE REMOVED)
[Symbol]	EXISTING RECESSED CAN LIGHT (TO REMAIN)
[Symbol]	EXISTING RECESSED CAN LIGHT (TO BE REMOVED)
[Symbol]	EXISTING EMERGENCY FIXTURE (TO REMAIN)
[Symbol]	EXISTING EMERGENCY FIXTURE (TO BE REMOVED)
[Symbol]	EXISTING ELECTRIC HEATER (TO REMAIN UNLESS NOTED TO DEMO)
[Symbol]	EXISTING ELECTRIC HEATER (TO BE REMOVED)
[Symbol]	EXISTING QUAD OUTLET (TO REMAIN)
[Symbol]	EXISTING QUAD OUTLET (TO BE REMOVED)
[Symbol]	EXISTING DUPLEX OUTLET (TO REMAIN)
[Symbol]	EXISTING DUPLEX OUTLET (REMOVE)
[Symbol]	EX. IN FLOOR DUPLEX OUTLET (REMOVE)
[Symbol]	EXISTING LIGHT SWITCH (TO BE REMOVED)
[Symbol]	EXISTING 3-WAY LIGHT SWITCH (REMOVE)
[Symbol]	EXISTING LIGHT SWITCH (TO REMAIN)
[Symbol]	EXISTING DATA OUTLET (TO REMAIN)
[Symbol]	EXISTING DATA OUTLET (TO BE REMOVED)
[Symbol]	EXISTING PHONE/DATA OUTLET (TO REMAIN)
[Symbol]	EXISTING PHONE/DATA OUTLET (REMOVE)
[Symbol]	EXISTING PHONE OUTLET (TO REMAIN)
[Symbol]	EXISTING PHONE OUTLET (TO BE REMOVED)
[Symbol]	EXISTING ELECTRICAL WIRE (TO REMAIN)
[Symbol]	EXISTING ELECTRICAL WIRE (TO BE REMOVED)
[Symbol]	EX. ELECTRICAL JUNCTION BOX (TO REMAIN)
[Symbol]	EX. ELECTRICAL JUNCTION BOX (REMOVE)
[Symbol]	EX. SECURITY SENSOR (TO BE REMOVED)
[Symbol]	EX. SECURITY CARD READER (TO REMAIN)

**1 FIRST FLOOR ELECTRICAL DEMOLITION PLAN**  
SCALE: 1/4"=1'-0"



**Midwest & Design**  
Engineering & Design  
MECHANICAL/ELECTRICAL/PLUMBING ENGINEER  
www.mwdesigninc.com  
Missouri State Certificate of Authority #01033267

**The Architects Alliance inc.**  
Jefferson City, Missouri

**FIRST FLOOR ELECTRICAL DEMOLITION PLAN**

**JEFFERSON CITY MUNICIPAL COURT RELOCATION**  
427 MONROE STREET  
JEFFERSON CITY, MISSOURI

PROJECT NO. 1637  
DATE: 03-01-2018  
**E101**  
SHEET 8 OF 15