

MIDWEST ENGINEERING & DESIGN  
MECH / ELEC / PLUMBING ENGINEER  
Missouri State Certificate of Authority #2010032467

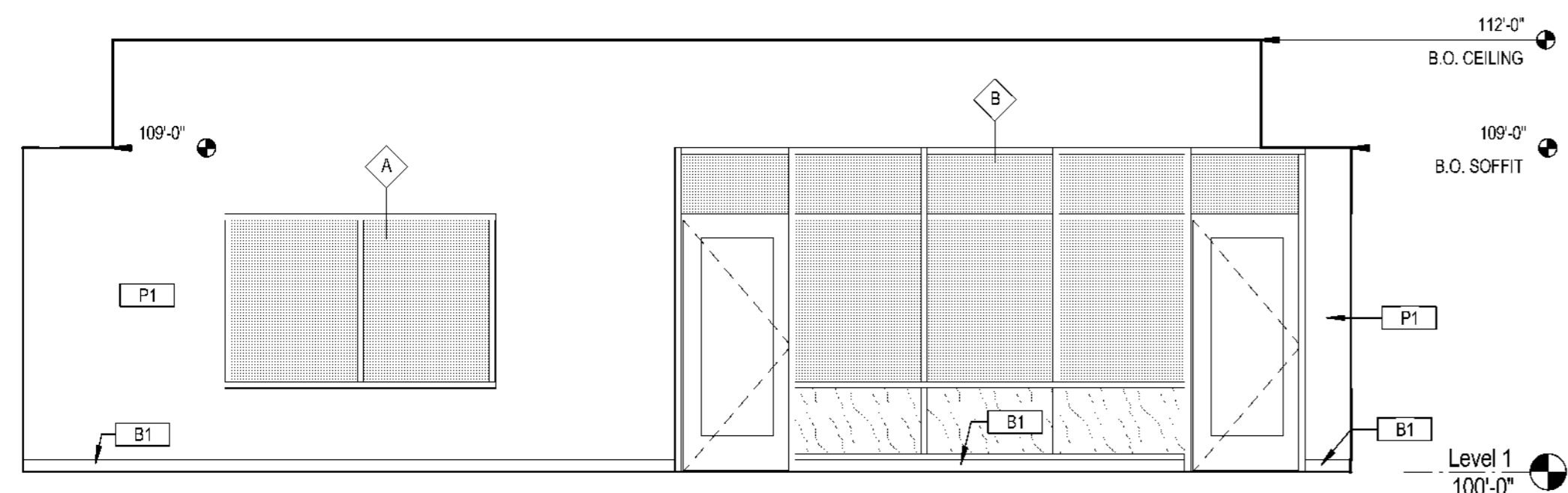
The Architects Alliance inc.  
Missouri State Certificate of Authority # 000143  
631 West Main Street  
Jefferson City, Missouri  
(573) 636-5000 phone

INTERIOR ELEVATIONS

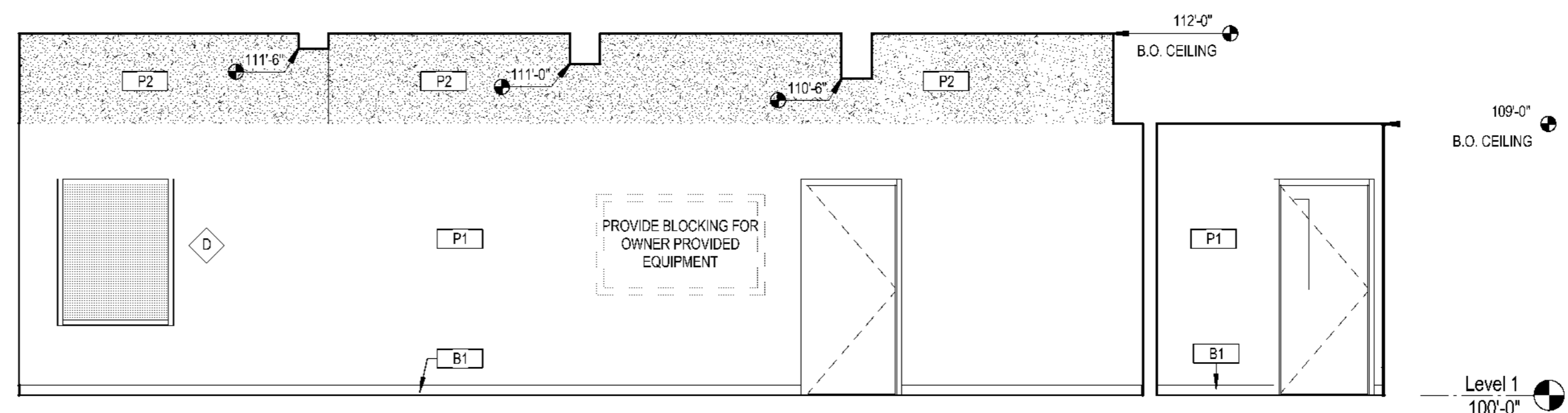
JEFFERSON CITY MUNICIPAL COURT  
RELOCATION AND RENOVATION  
427 Monroe Street  
Jefferson City, Missouri

PROJECT NO. 1637  
DATE: 04-17-18

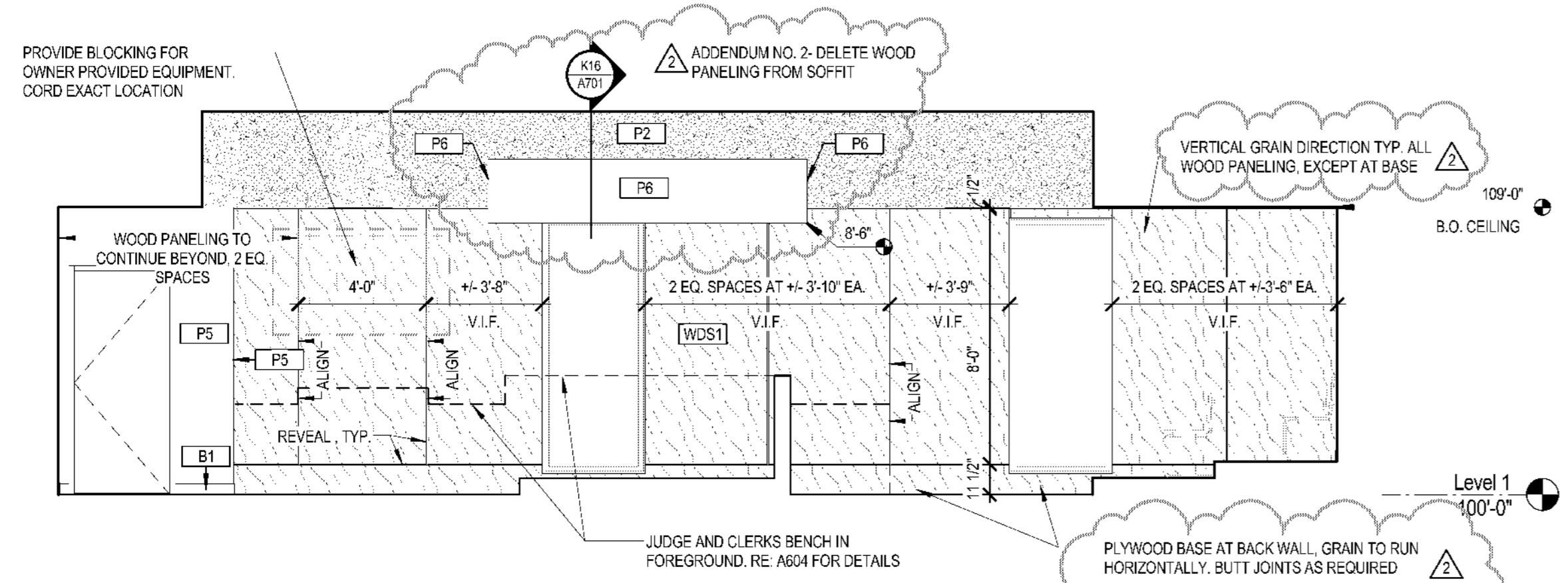
A603



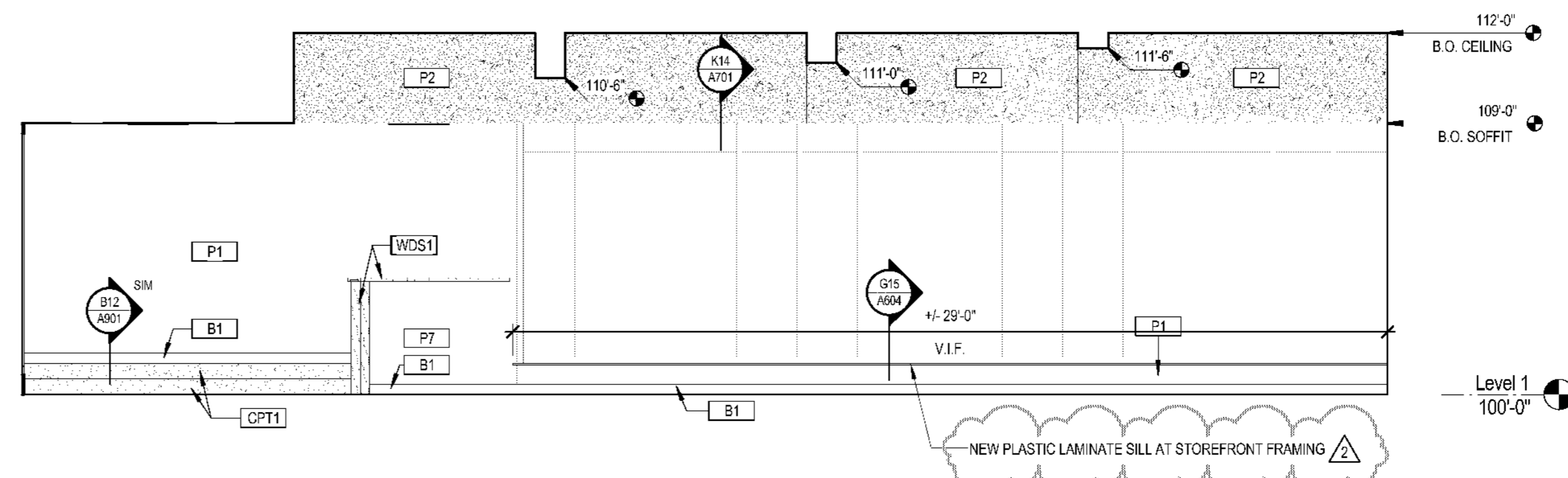
C2 ELEVATION- COURTROOM NORTH  
SCALE: 1/4" = 1'-0"



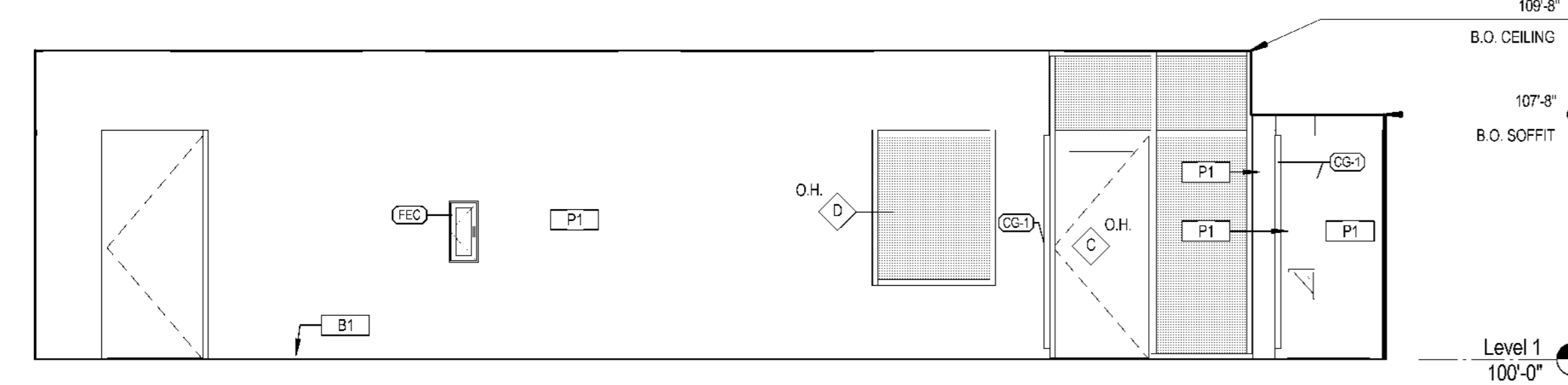
C10 ELEVATION- COURTROOM EAST  
SCALE: 1/4" = 1'-0"



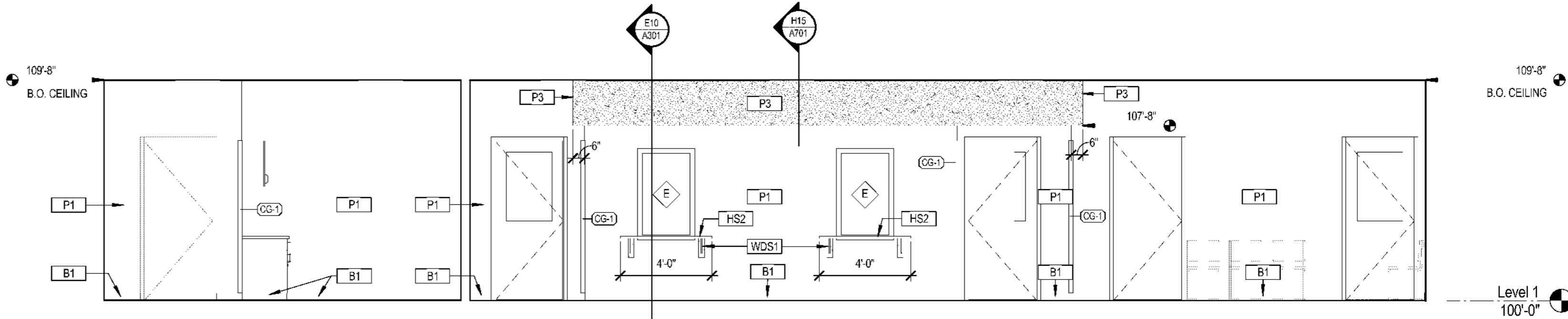
E2 ELEVATION- COURTROOM SOUTH  
SCALE: 1/4" = 1'-0"



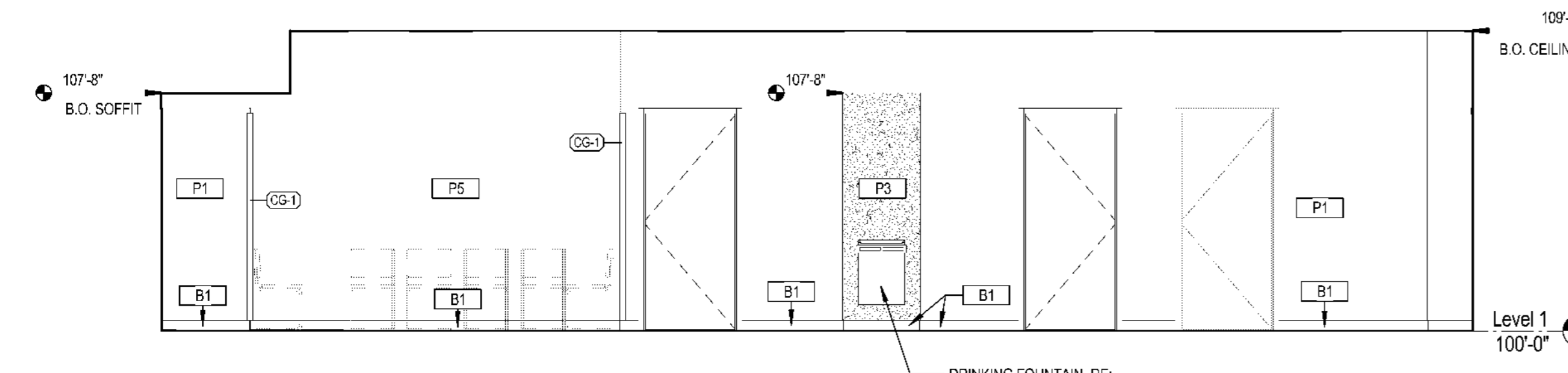
E10 ELEVATION- COURTROOM WEST  
SCALE: 1/4" = 1'-0"



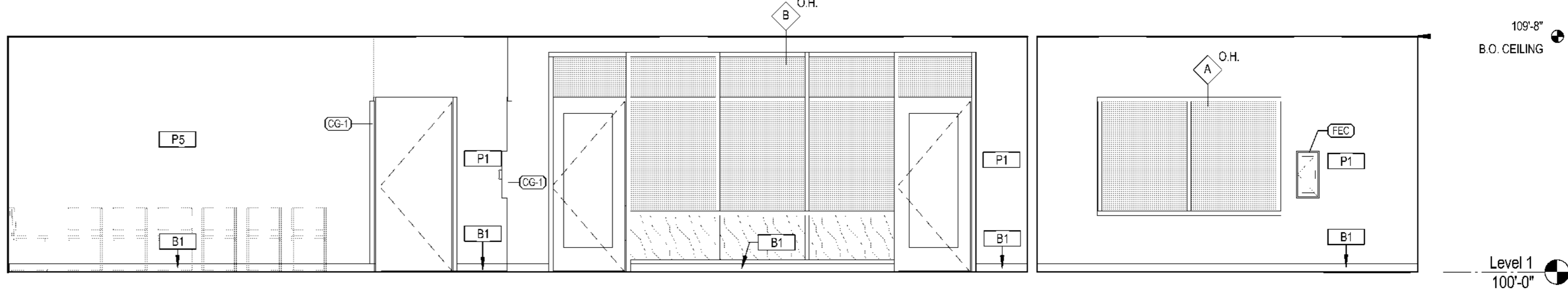
G2 ELEVATION- PUBLIC CORRIDOR WEST  
SCALE: 1/4" = 1'-0"



G11 ELEVATION- PUBLIC CORRIDOR/WAITING NORTH  
SCALE: 1/4" = 1'-0"



K2 ELEVATION- PUBLIC CORRIDOR/WAITING EAST  
SCALE: 1/4" = 1'-0"



K11 ELEVATION- PUBLIC CORRIDOR/WAITING SOUTH  
SCALE: 1/4" = 1'-0"