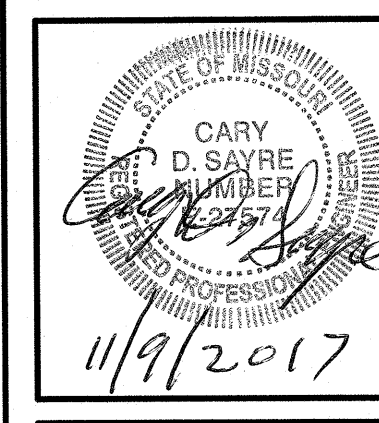


**ALLSTATE CONSULTANTS**  
 P.O. BOX 166, 30601 HIGHWAY 5  
 MARCELINE, MO 64658  
 (660) 376-2941  
 allstateconsultants.net

MISSOURI STATE CERTIFICATE  
 OF AUTHORITY #2007004004

REUSE OF THIS DRAWING IN ANY MANNER IS  
 STRICTLY PROHIBITED WITHOUT THE WRITTEN  
 APPROVAL OF  
 ALLSTATE CONSULTANTS LLC

**FLOOR PLAN**  
**CITY OF GILMAN CITY**  
**WASTEWATER TREATMENT FACILITY**  
 GILMAN CITY, MISSOURI



DATE  
 JULY 2017

REVISED:  
 10-18-17 LEGEND

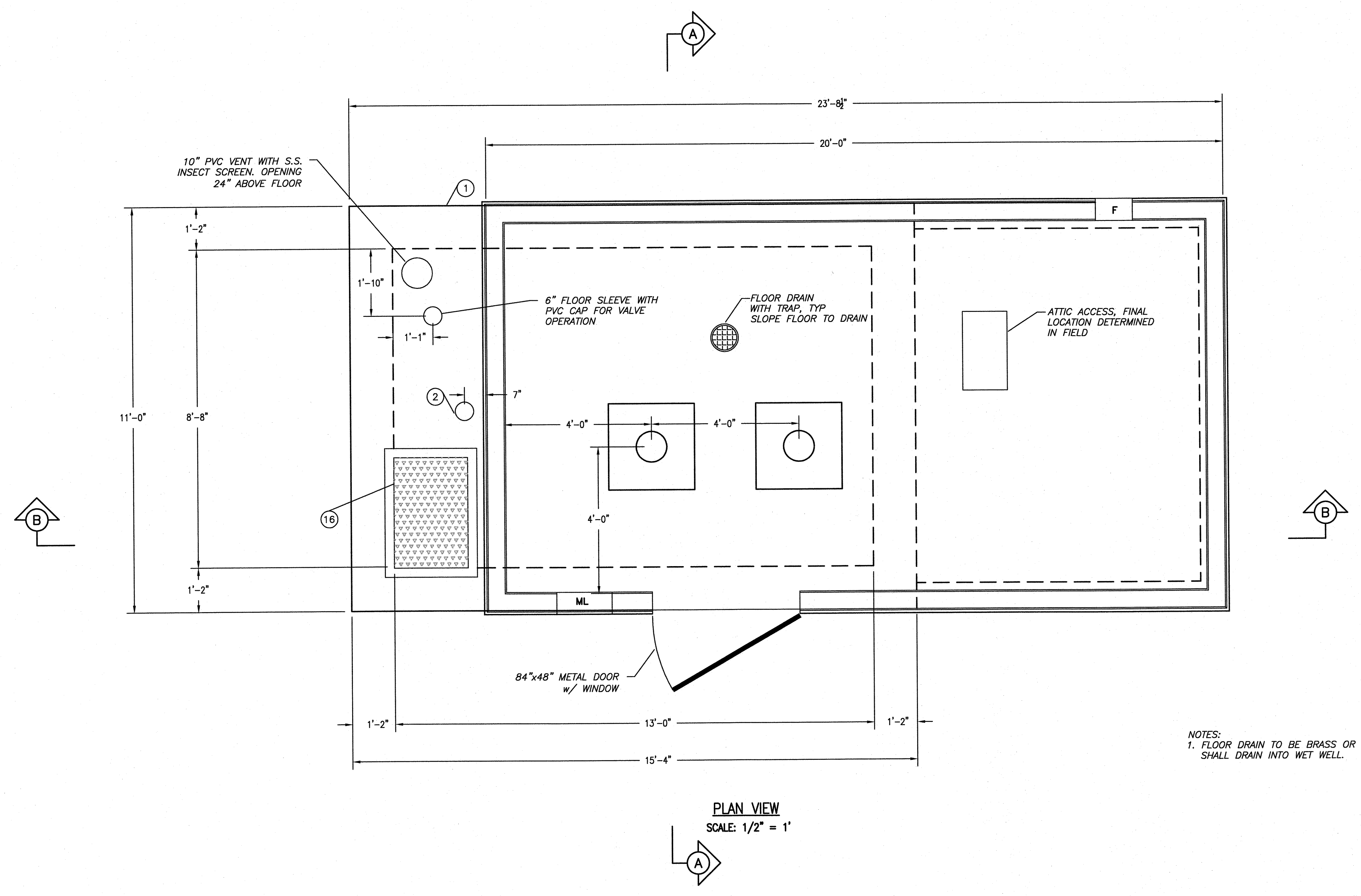
JOB NUMBER  
 13147.01

SCALE  
 1/2" = 1'

SHEET  
**10**

MECHANICAL AND ELECTRICAL LEGEND	
ITEM	DESCRIPTION
MTS	MANUAL TRANSFER SWITCH
M	METER & METER BASE
SED	SERVICE ENTRANCE DISCONNECT
MB	MAIN BREAKER
VFD/CP	MOTOR CONTROL CENTER/CONTROL PANEL
RTU	REMOTE TELEMETRY UNIT (SCADA)
T	STEP DOWN TRANSFORMER (3# TO 1#)
BP	1#, 120/208v. BREAKER PANEL
P	IRRIGATION PUMP
FM	FLOW METER JUNCTION BOX
FL	EMERGENCY FLOAT JUNCTION BOX
H	CEILING HUNG HEATER
F	EXHAUST FAN WITH INSECT SCREEN (18 MESH)
ML	MOTORIZED LOUVRE WITH INSECT SCREEN (18 MESH)
\$	SWITCH
⊕	RECEPTACLE
⊕	EXTERIOR LIGHT
⊕	INTERIOR FLUORESCENT LIGHT BALLAST

STRUCTURE AND PIPING LEGEND		
ITEM	DESCRIPTION	SIZE
1	CONCRETE WET WELL (I.D.)	13'-0"x8'-0"
2	6" DIA. FLOOR SLEEVE W/ PVC CAP	6"Ø x 1'-2"
3	PUMP STATION BUILDING (O.S. STUDS)	20'-0"x11'-0"
4	DUCTILE IRON PIPE	12"
5	DUCTILE IRON PIPE	10"
6	DUCTILE IRON PIPE REDUCER	10"x8"
7	DUCTILE IRON PIPE	8"
8	90° ELBOW	8"
9	CHECK VALVE	8"
10	PLUG VALVE	8"
11	FLOW METER	8"
12	BASKET STRAINER	8"
13	AIR RELEASE - COPPER TUBING & BALL VALVE	1"
14	TEE	8"x8"x8"
15	PRESSURE GAUGE w/SNUBBER	0-200 PSI
16	ALUMINUM ACCESS HATCH	24" x 36"



NOTES:  
 1. FLOOR DRAIN TO BE BRASS OR PVC.  
 SHALL DRAIN INTO WET WELL.

PLAN VIEW  
 SCALE: 1/2" = 1'