

POWER SYMBOL LEGEND

- ⊕ POWER RECEPTACLE
MOUNTING HEIGHT (INCHES)
IF OTHER THAN 18" AFF (BOTTOM OF BOX)
- ⊕ WP INDICATES WEATHERPROOF OUTDOOR RECEPTACLE
- ⊕ AW INDICATES ABOVE WINDOW RECEPTACLE
- ⊕ C INDICATES ABOVE CEILING
- ⊕ E INDICATES EXISTING RECEPTACLE TO REMAIN
- ⊕ GFI DUPLEX CONVENIENCE OUTLET
- ⊕ QUADPLEX CONVENIENCE OUTLET
- ⊕ 208V OUTLET
- ⊕ USB OUTLET EQUAL TO LEVITON #78822 OR APPROVED EQUAL
- ⊕ DATA / TELEPHONE JACK (MOUNTED @ 18" AFF U.N.O.)
OUTLET BOX WITH 1" CONDUIT UP TO CEILING SPACE w/ PULL STRING.
PHONE & DATA WIRING BY OWNER'S SUBCONTRACTOR.
PHONE / DATA CABLING TO BE PLENUM RATED.
DATA CABLING TO BE CAT6.
- ⊕ WP WIRELESS DATA ACCESS POINT (CEILING MOUNTED)
- ⊕ IN FLOOR POWER
- ⊕ IN FLOOR DATA
- ⊕ JUNCTION BOX
- ⊕ DISCONNECT
- ⊕ FUSED DISCONNECT
- ⊕ FUSED SWITCH
- ⊕ STARTER / DISCONNECT (24V COIL FOR DDC CONTROL)
- ⊕ TIMER-1 NIGHT CIRCUITS TIMER - 4 POLE 20 AMP, 120V,
MODEL # INTERMATIC T74018C (SET TO RUN DURING NIGHT HOURS)
- ⊕ TIMER-2 OCCUPIED HOURS TIMER - 4 POLE 20 AMP, 120V,
MODEL # INTERMATIC T74018C (SET TO RUN DURING OCCUPIED HOURS)
- ⊕ RELAY
- ⊕ TIE INTO EXISTING

POWER GENERAL NOTES

1. REFER TO E100 FOR REMAINING POWER NOTES, LEGENDS, DETAILS & SCHEDULES

POWER PLAN KEY NOTES

- ① WIRE OUTLET DOWNSTREAM OF GFCI OUTLET SO THAT DRINKING FOUNTAIN IS GFCI PROTECTED.
- ② J-BOX FOR CORD REEL (EQUAL TO HUBBELL #HBLCC31031T, WHITE REEL, WHITE CORD).

SECURITY SYMBOL KEY

NOTE: SYMBOLS LEGEND IS COMPREHENSIVE. SOME SYMBOLS OR VARIATIONS THEREOF MAY NOT BE USED ON PLANS. MOUNTING HEIGHTS OF ALL ACCESSIBLE ACCESS CONTROL DEVICES SHALL BE PER ADA REQUIREMENTS LISTED BELOW UNLESS NOTED OTHERWISE. MOUNTING HEIGHTS OF ALL OTHER DEVICES SHALL BE PER MANUFACTURER'S RECOMMENDATIONS

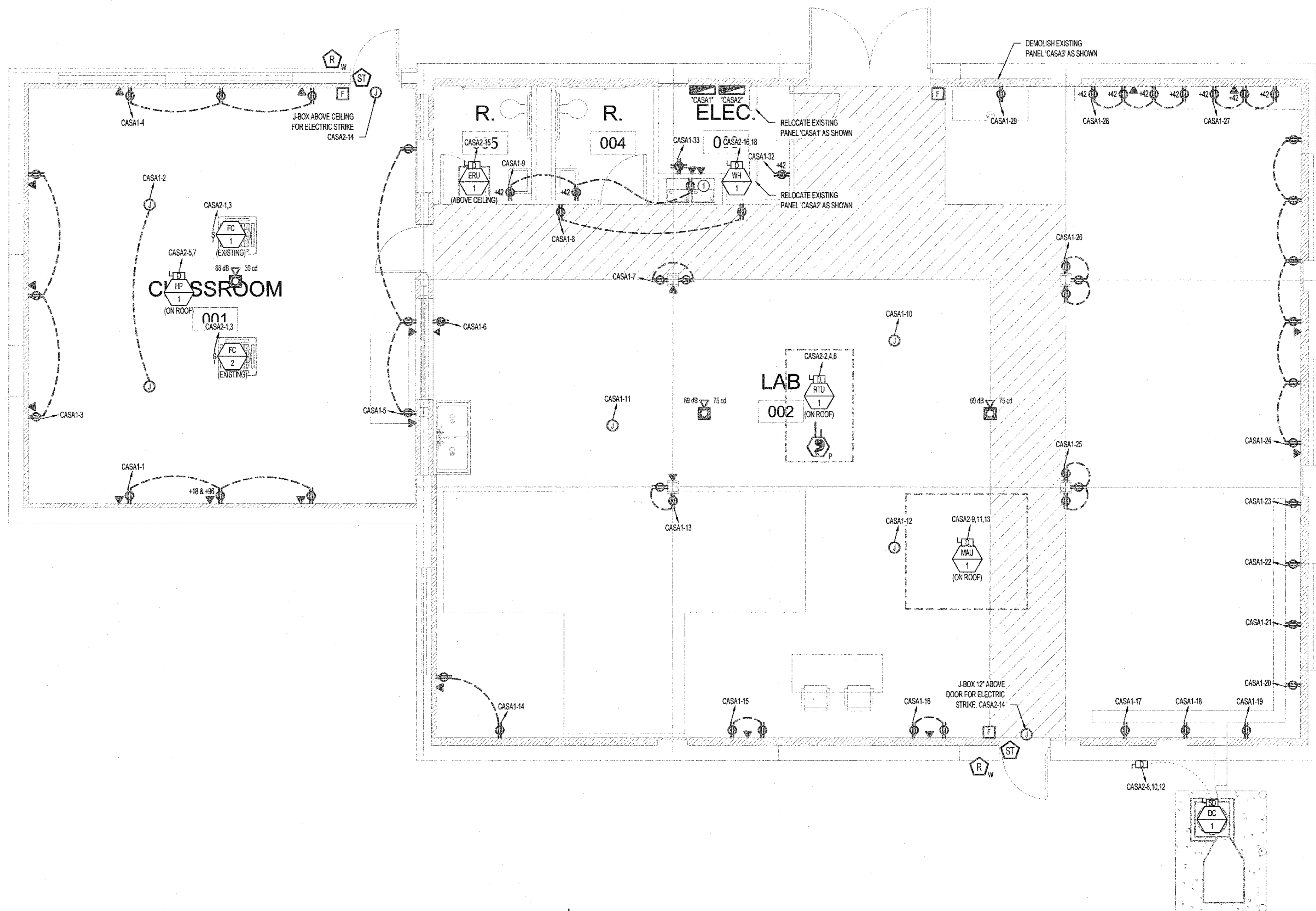
- ⊕ SECURITY SYMBOL
- INDICATES MOUNTING
C = CEILING
W = WALL
- INDICATES TYPE
C = CAMERA
D = DOOR / WINDOW SENSOR
G = GLASS BREAK DETECTOR (CEILING MOUNTED U.N.O.)
K = KEYPAD (WALL MOUNTED w/ TOP ROW OF KEYS @ 48" AFF)
M = MOTION DETECTOR
MC = MICROPHONE (CEILING MOUNTED U.N.O.)
P = PUSH BUTTON (WALL MOUNTED w/ BUTTON CENTERED @ 48" AFF)
R = CARD READER (WALL MOUNTED w/ READER CENTERED @ 48" AFF)
ST = POWERED DOOR STRIKE
ROUTE 1/2" CONDUIT FROM STRIKE IN DOOR FRAME TO ACCESSIBLE POINT ABOVE CEILING OR TO JUNCTION BOX @ 12" AFF IF CEILING IS NOT ACCESSIBLE

FIRE ALARM SYSTEM SYMBOL LEGEND

- ⊕ MANUAL FIRE ALARM "PULL" STATION - DOUBLE ACTION PUSH-IN / PULL-DOWN
- INDICATES DUCT DETECTOR
PROVIDED & WIRED BY FIRE ALARM CONTRACTOR, INSTALLED BY HVAC CONTRACTOR
- ⊕ SMOKE DETECTOR
- ⊕ X INDICATES DETECTION TYPE
"P" = PHOTOELECTRIC
"AS" = AIR SAMPLING
"BR" = BEAM RECEIVER
"BT" = BEAM TRANSMITTER
"ION" = IONIZATION
"SB" = SOUNDER BASE (88 db MIN.)
- AUDIBLE / VISIBLE NOTIFICATION APPLIANCE (HORN +STROBE)
HORN TAPPED AT "Y" DECIBELS, STROBE INTENSITY SET AT "X" CANDELA.
SHALL BE COLOR: RED, LABELED: "FIRE" IN WHITE TEXT
- "C" = CEILING MOUNTED

FIRE ALARM GENERAL NOTES

1. WIRE ALL NEW INITIATING DEVICES & NOTIFICATION APPLIANCES THROUGH FIRE ALARM CONTROL PANEL IN EXISTING BUILDING.



FLOOR PLAN
SCALE: 1/4" = 1'-0"

PWArchitects, Inc.
2120 Forum Blvd, Suite 101
Columbia, Missouri 65203
PWArchitects.com | 573.449.2683

Timberlake ENGINEERING
912 OLD 63 SOUTH COLUMBIA, MO 65201
(573) 875-4385 www.timberlakeengineering.com

THE PROFESSIONAL ENGINEER'S SEAL ON THIS DRAWING HAS BEEN AFFIXED IN ACCORDANCE WITH THE REQUIREMENTS OF CHAPTER 327, RSMO. IN AFFIXING THIS SEAL THE ENGINEER TAKES RESPONSIBILITY FOR THE WORK SHOWN ON THIS DRAWING ONLY, AND HEREBY DISCLAIMS ANY AND ALL RESPONSIBILITY FOR OTHER PROJECT DRAWINGS NOT DIRECTLY BEARING THIS SEAL.

STATE OF MISSOURI
JAMES P. WATSON
NUMBER PE-2015017071
PROFESSIONAL ENGINEER
June 18, 2018

JAMES WATSON, P.E. PE-2015017071
CERTIFICATE OF AUTHORITY
TO OFFER ENGINEERING SERVICES
TIMBERLAKE ENGINEERING, PC
CERTIFICATE OF AUTHORITY #: 2006012388



HICKMAN HIGH CASA BUILDING RENOVATIONS
1104 NORTH PROVIDENCE
COLUMBIA, MO 65203

Drawn:	TE Project Number:
DET	15116
Checked:	PWA Project Number:
JAP	201621.15

Drawing Title:
POWER PLAN

No.	Revisions:	Date:
	PERMIT SET	06-18-2018

Submission Date:	Drawing Number:
06/19/2018	EP100
Plot Date:	
06/13/2018	