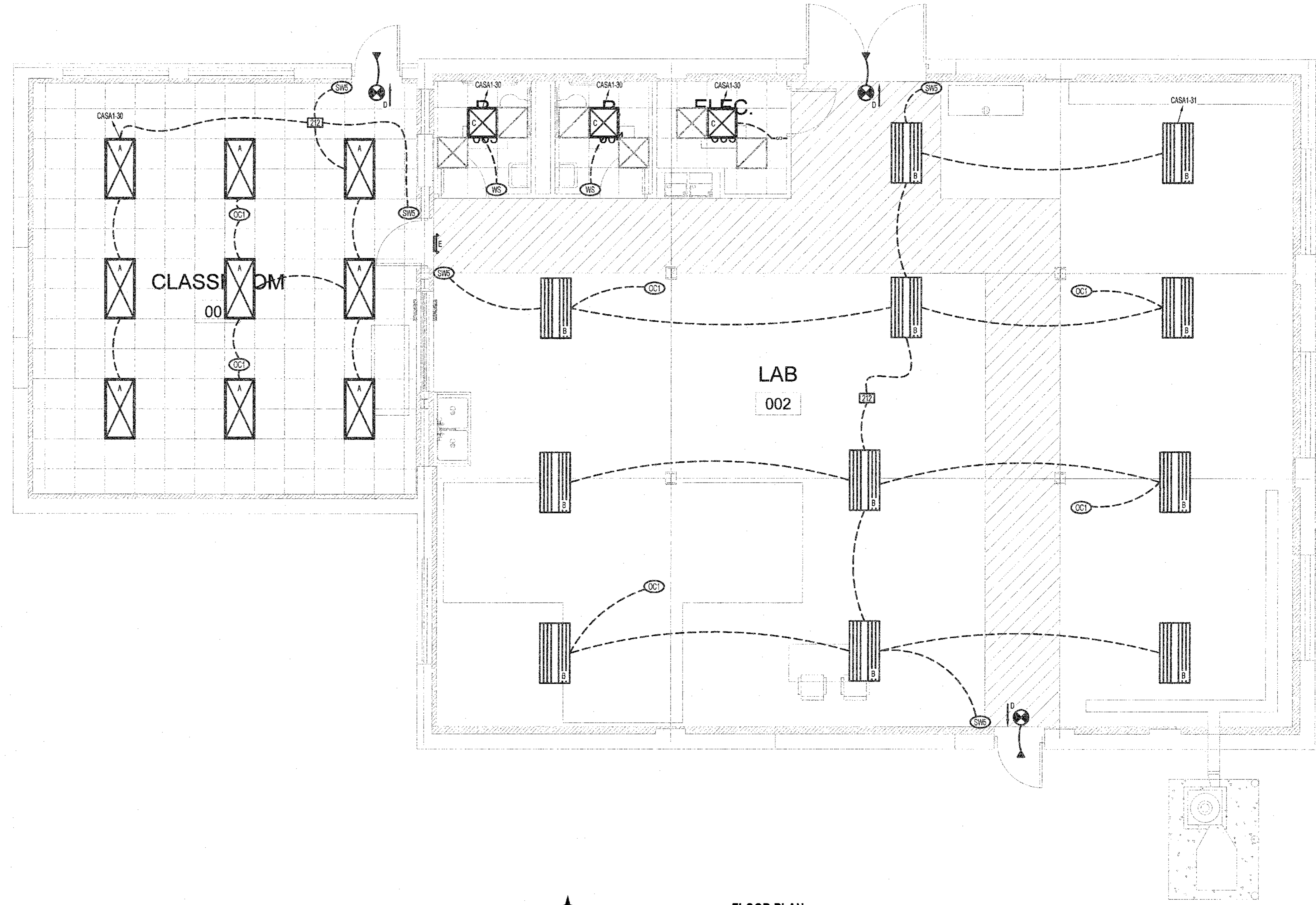


LIGHTING SYMBOL LEGEND

- LIGHTING FIXTURE
- UN-SWITCHED NIGHT LIGHT
- DARKENED INDICATES FIXTURE WITH EMERGENCY BALLAST
- INDICATES FIXTURE TYPE
- TOGGLE SWITCH
- TYPE OF SWITCH
- WALL MOUNTED SCENE SWITCH - EQUAL TO WATTSTOPPER #LMSW-105
- CEILING MOUNTED VACANCY SENSOR - EQUAL TO WATTSTOPPER #LMDC-100
- WALL MOUNTED VACANCY SENSOR - EQUAL TO WATTSTOPPER #DW-100
- DIGITAL ROOM CONTROLLER - EQUAL TO WATTSTOPPER #LMRC-212

LIGHTING GENERAL NOTES

1. REFER TO ED100 FOR REMAINING LIGHTING NOTES, LEGENDS, DETAILS & SCHEDULES



FLOOR PLAN
SCALE: 1/4" = 1'-0"

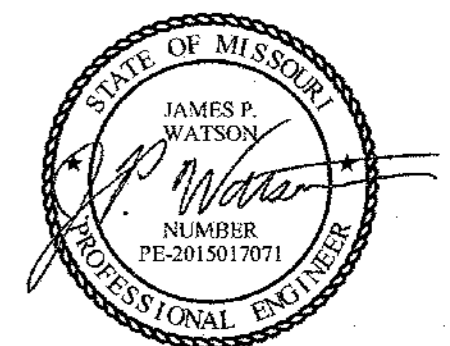
LIGHTING SCHEDULE												
MARK	MANUFACTURER*	MODEL NO.*	TYPE	VOLTS	AMPS	WATTS	LUMENS	CCT (°K)	CRI	LAMPS	MOUNTING	REMARKS
A	METALUX	24FPR435C	2x4 FLAT PANEL TROFFER	120	0.49	58.8	6602	3500	80	LED	TROFFER	
B	METALUX	HBLED-LD6-155E-WUNV-L850-ED1	LED HIGH BAY	120	0.83	99	14245	5000	80	LED	CHAIN	
C	METALUX	22FP3235C	2x2 FLAT PANEL TROFFER	120	0.25	29	3417	3500	80	LED	TROFFER	
D	SURE-LITES	APCH7 UNV R	EM. LITE/EXIT COMBO	120	0.17	-	-	-	-	LED	WALL/CLG	
E	SURE-LITES	SEL25	EMERGENCY LIGHT	120	0.15	-	-	-	-	LED	WALL	

* OR EQUAL

PWArchitects, Inc.
2120 Forum Blvd, Suite 101
Columbia, Missouri 65203
PWArchitects.com | 573-449-2683

Timberlake ENGINEERING
912 OLD 83 SOUTH COLUMBIA, MO 65201
(573) 875-4365 www.timberlakeengineering.com

THE PROFESSIONAL ENGINEER'S SEAL ON THIS DRAWING HAS BEEN AFFIXED IN ACCORDANCE WITH THE REQUIREMENTS OF CHAPTER 327, RSMO. IN AFFIXING THIS SEAL THE ENGINEER TAKES RESPONSIBILITY FOR THE WORK SHOWN ON THIS DRAWING ONLY, AND HEREBY DISCLAIMS ANY AND ALL RESPONSIBILITY FOR OTHER PROJECT DRAWINGS NOT DIRECTLY BEARING THIS SEAL.



June 18, 2018

JAMES WATSON, P.E. PE-2015017071
CERTIFICATE OF AUTHORITY
TO OFFER ENGINEERING SERVICES
TIMBERLAKE ENGINEERING, PC
CERTIFICATE OF AUTHORITY #: 2006012388



HICKMAN HIGH CASA BUILDING RENOVATIONS
1104 NORTH PROVIDENCE
COLUMBIA, MO 65203

Drawn: DET	TE Project Number: 15116
Checked: JAP	PWA Project Number: 201621.15

Drawing Title: LIGHTING PLAN

No.	Revisions	Date
	PERMIT SET	06-18-2018

Submission Date: 06/19/2018	Drawing Number: EL100
Plot Date: 06/13/2018	