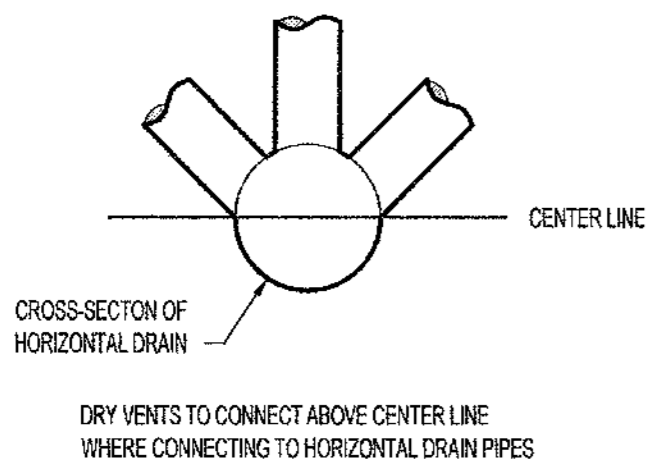
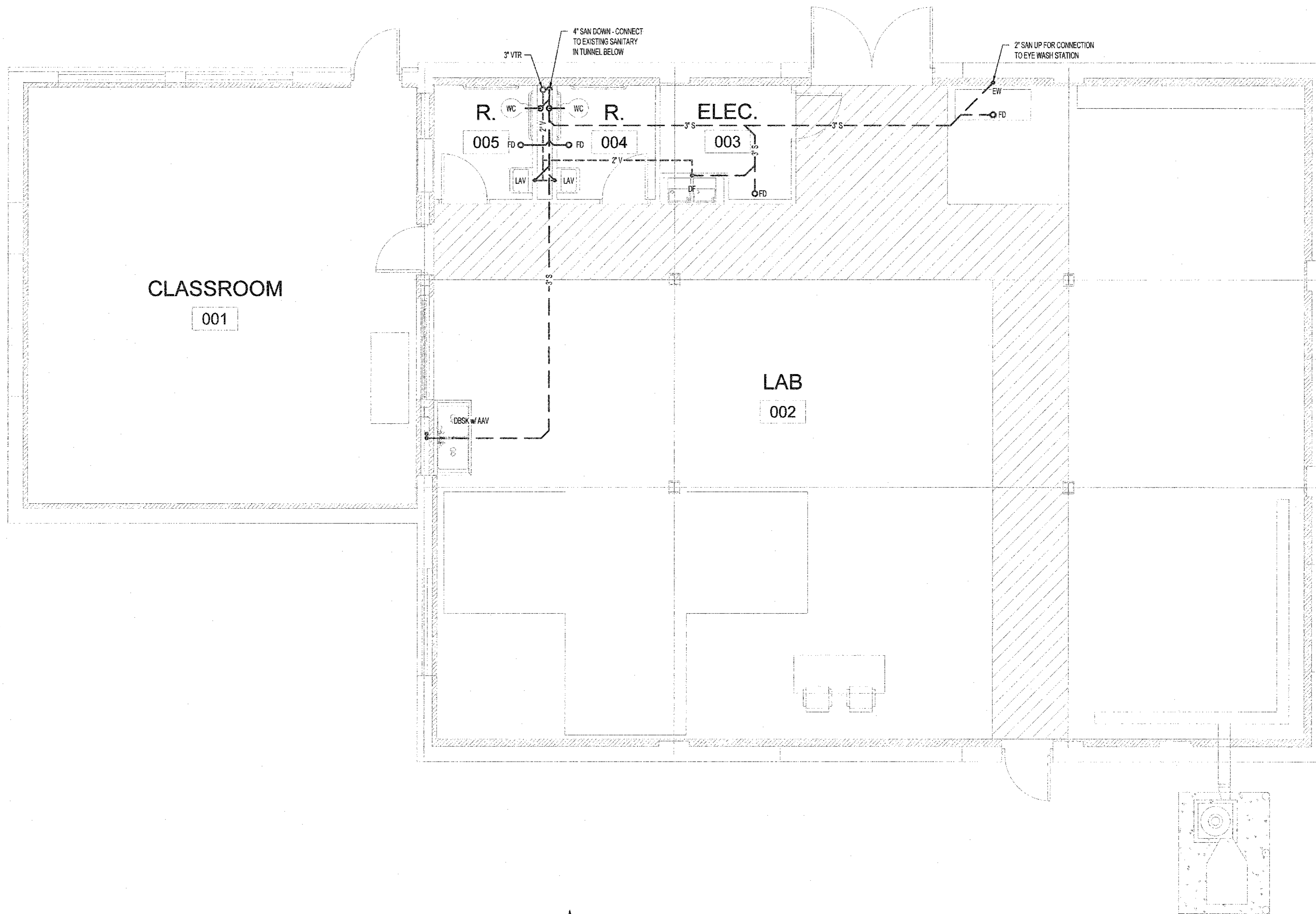


PLUMBING SYMBOL LEGEND

	SANITARY SEWER
	VENT
	COLD WATER
	HOT WATER
	HOT WATER RECIRCULATION
	WATER METER
	VALVE
	PUMP
	GAS
	GAS METER
	AIR
	PIPE LINE TURNED UP / PIPE LINE TURNED DOWN
	TIE INTO EXISTING



DRY VENT DETAIL



FLOOR PLAN
SCALE: 1/4" = 1'-0"

PLUMBING FIXTURE SCHEDULE

MARK	DESCRIPTION	MANUFACTURER*	MODEL NO'	REMARKS
AAV	AIR ADMITTANCE VALVE	OATEY "SUREVENT"	39016	1-1/2" OR 2" GOOD FOR UP TO 20 DFU. LOCATE IN ACCESSIBLE LOCATION, ABOVE FLOOD RIM OF FIXTURE
DBSK	DOUBLE BASIN SINK	ELKAY	RNSF82482	WITH ELKAY #LK940AT12LZH FAUCET
DF	DRINKING FOUNTAIN	ELKAY	EZSTL8WSLK	EZH20 BOTTLE FILLING STATION WITH B-LEVEL EZ COOLER
EW	EYE WASH	GUARDIAN	GBF1909-GC-G3800LF	FINISH: YELLOW
EXP	EXPANSION TANK	WATTS	PLT-5	
FPRH	FROST PROOF ROOF HYDRANT	WOODFORD	SRIH-MS	
FCO	FLOOR CLEAN OUT	ZURN	ZN1400	
FD	FLOOR DRAIN WITH TRAP GUARD	ZURN	ZN415-5B	WITH PROSET T633-ZURN TRAP GUARD
LAV	LAVATORY - WALL HUNG (MANUAL FAUCET)	AMERICAN STD.	0355.012	WITH ZURN Z81104-XL FAUCET AND TRUEBRO "LAVGUARD" TRAP, STOP, AND SUPPLY COVER
RP	RECIRCULATION PUMP	GRUNDFOS	UP15-10BUC5	120V, 80W
WC	WATER CLOSET - WALL-MTD FLUSH (MANUAL) - ADA	AMERICAN STD.	2257.101	WHITE, WITH BEMIS # 16565SCT SEAT, ZURN Z-1203 CARRIER, AND ZURN Z8000AV FLUSH VALVE (MANUAL)
WCO	WALL CLEAN OUT			SAN TEE WITH THREADED PLUG AND CHROME ESCUTCHEON CLEANOUT COVER IN VENT LINE
WH	WATER HEATER (POINT OF USE - ELECT)	RUUD	EGSP20	20 GALLON, 208V, 2000 WATT, 9.6 AMPS

*OR EQUAL

NOTE: CONTRACTOR TO COORDINATE AND VERIFY ALL PLUMBING FIXTURES MEET ADA REQUIREMENTS WITH ARCHITECT PRIOR TO PURCHASE / INSTALLATION.

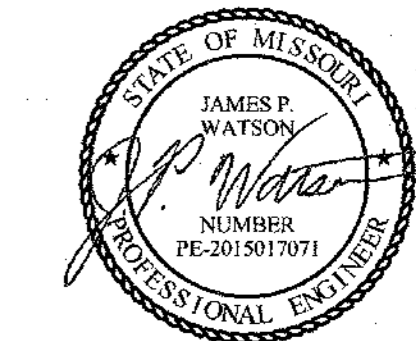


PWA Architects, Inc.
2120 Forum Blvd, Suite 101
Columbia, Missouri 65203
PWAArchitects.com | 573.449.2683
Peckham et Wright Architects an Architectural Corporation



912 OLD 63 SOUTH COLUMBIA, MO 65201
(573) 875-4355 www.timberlakeengineering.com

THE PROFESSIONAL ENGINEER'S SEAL ON THIS DRAWING HAS BEEN AFFIXED IN ACCORDANCE WITH THE REQUIREMENTS OF CHAPTER 327, RSMO. IN AFFIXING THIS SEAL THE ENGINEER TAKES RESPONSIBILITY FOR THE WORK SHOWN ON THIS DRAWING ONLY, AND HEREBY DISCLAIMS ANY AND ALL RESPONSIBILITY FOR OTHER PROJECT DRAWINGS NOT DIRECTLY BEARING THIS SEAL.



June 18, 2018

JAMES WATSON, P.E. PE-2015017071
CERTIFICATE OF AUTHORITY
TO OFFER ENGINEERING SERVICES
TIMBERLAKE ENGINEERING, PC
CERTIFICATE OF AUTHORITY #: 2006012388

Columbia Public Schools

HICKMAN HIGH CASA
BUILDING RENOVATIONS
1104 NORTH PROVIDENCE
COLUMBIA, MO 65203

Drawn: DET Project Number: 15116
Checked: JAP PWA Project Number: 201621.15

Drawing Title:
SANITARY & VENTING PLAN

No.	Revisions	Date
	PERMIT SET	06-18-2018

Submission Date: 06/19/2018
Plot Date: 06/13/2018
Drawing Number: **PS100**