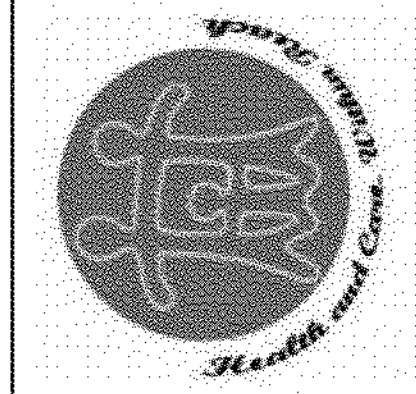


Midwest Engineering & Design
 3100 Brown Station Rd. Suite C
 Columbia, MO 65202
 (573) 875-0045 Phone
 (573) 875-0048 FAX
 WWW.MOENGINEERING.COM
 Missouri State Certificate of Authority #201003267

**FAMILY HEALTH CENTER
 DENTAL CLINIC RENOVATION**
 1001 WEST WORLEY
 COLUMBIA, MO 65203



ISSUE FOR CONSTRUCTION

REVISION	DATE

FIRE PROTECTION PLAN

FP101

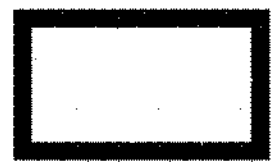
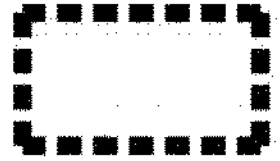



SOA PROJECT 16053

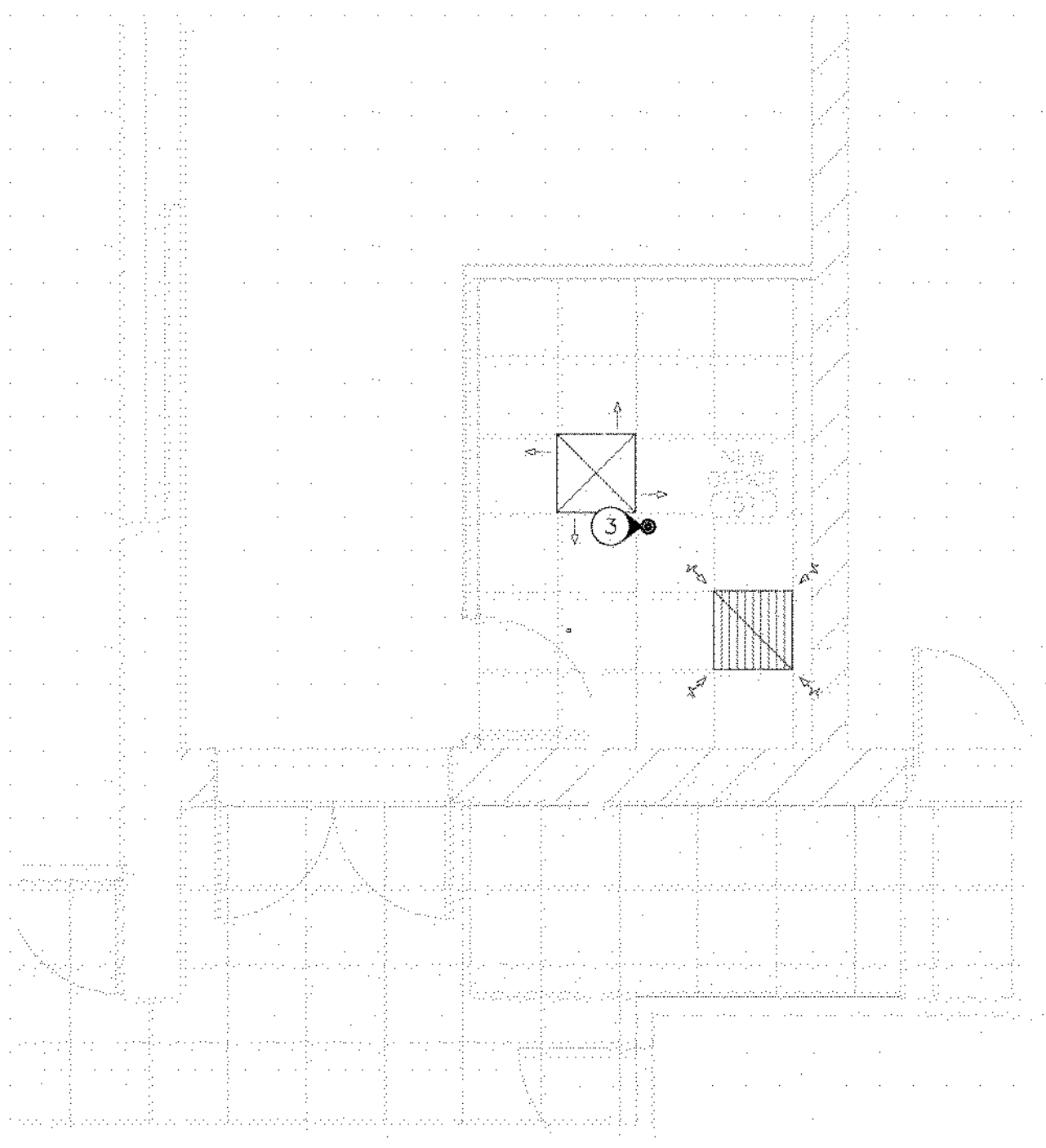
If you must print this drawing, please recycle.

GENERAL MECHANICAL NOTES

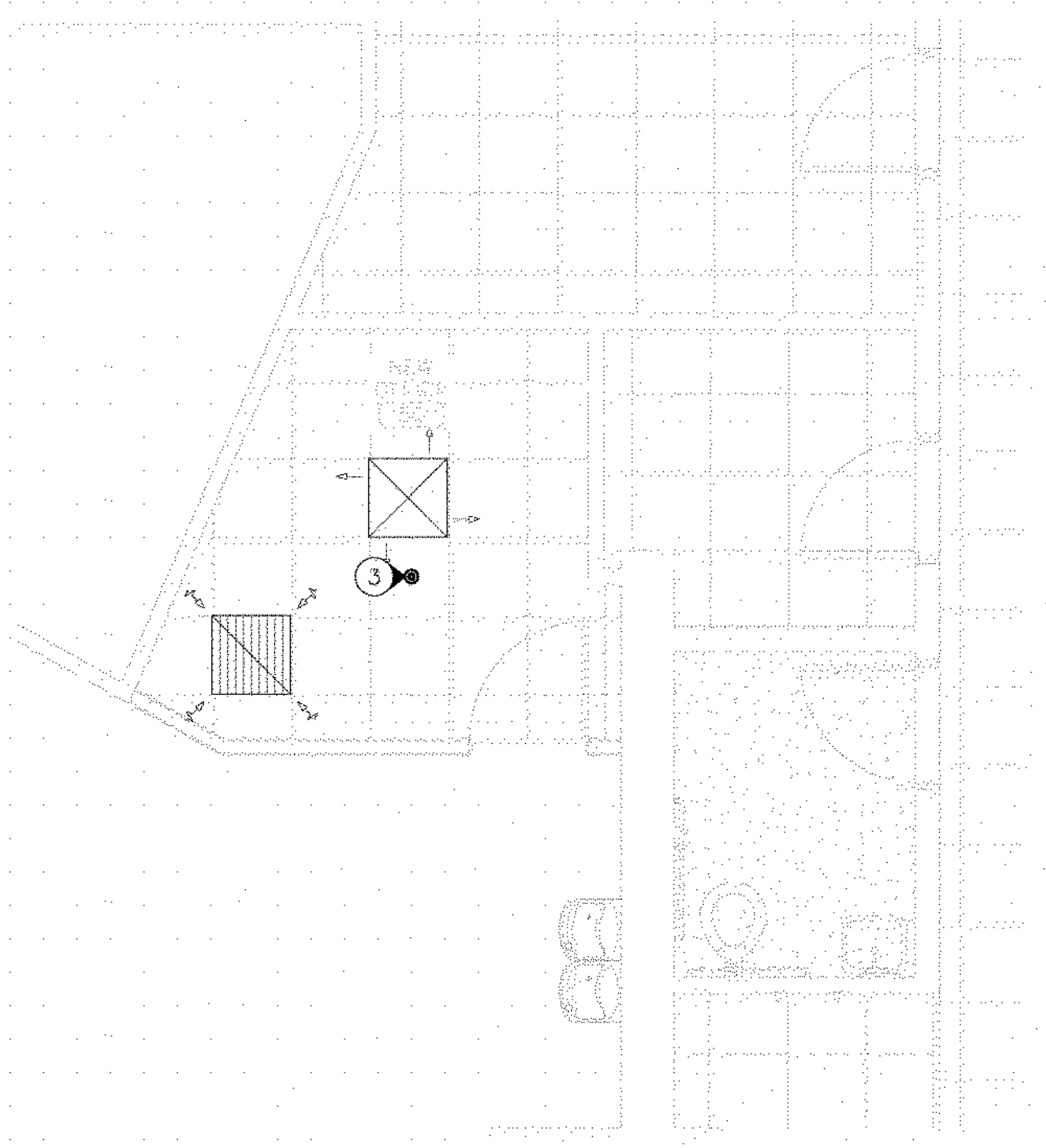
- EXISTING WET PIPE FIRE PROTECTION SYSTEM SHALL BE MODIFIED TO PROTECT THE REVISED AREAS AND CEILING CONFIGURATIONS INDICATED IN THIS RENOVATION. REVISED SYSTEM SHALL BE DESIGNED AND INSTALLED IN STRICT ACCORDANCE WITH NFPA-13 AND LOCAL CODES. FIRE PROTECTION DESIGN ON THIS SHEET IS SCHEMATIC ONLY AND ALL INFORMATION SHALL BE VERIFIED AND MODIFIED AS REQUIRED. FINAL LAYOUT IS THE RESPONSIBILITY OF THE FIRE PROTECTION CONTRACTOR. HYDRAULIC CALCULATIONS AND SPRINKLER SYSTEM SHOP DRAWINGS SHALL BE SUBMITTED TO THE ENGINEER, AND THE AUTHORITIES HAVING JURISDICTION.
- LAY-IN CEILING SPRINKLERS SHALL BE 1/2" RELIABLE MODEL C4A QUICK RESPONSE, RECESSED SPRINKLERS, OR APPROVED EQUIVALENT. SPRINKLERS TO HAVE 165°F TEMPERATURE RATING UNLESS INDICATED OTHERWISE.
- EXISTING SPACE CEILING IS OPEN TO THE ROOF DECK. SPRINKLERS ARE SET IN CEILING SPACE. PROVIDE NEW DROP BRANCHES AND INSTALL SPRINKLERS IN CEILING AS INDICATED.

DRAWING KEY

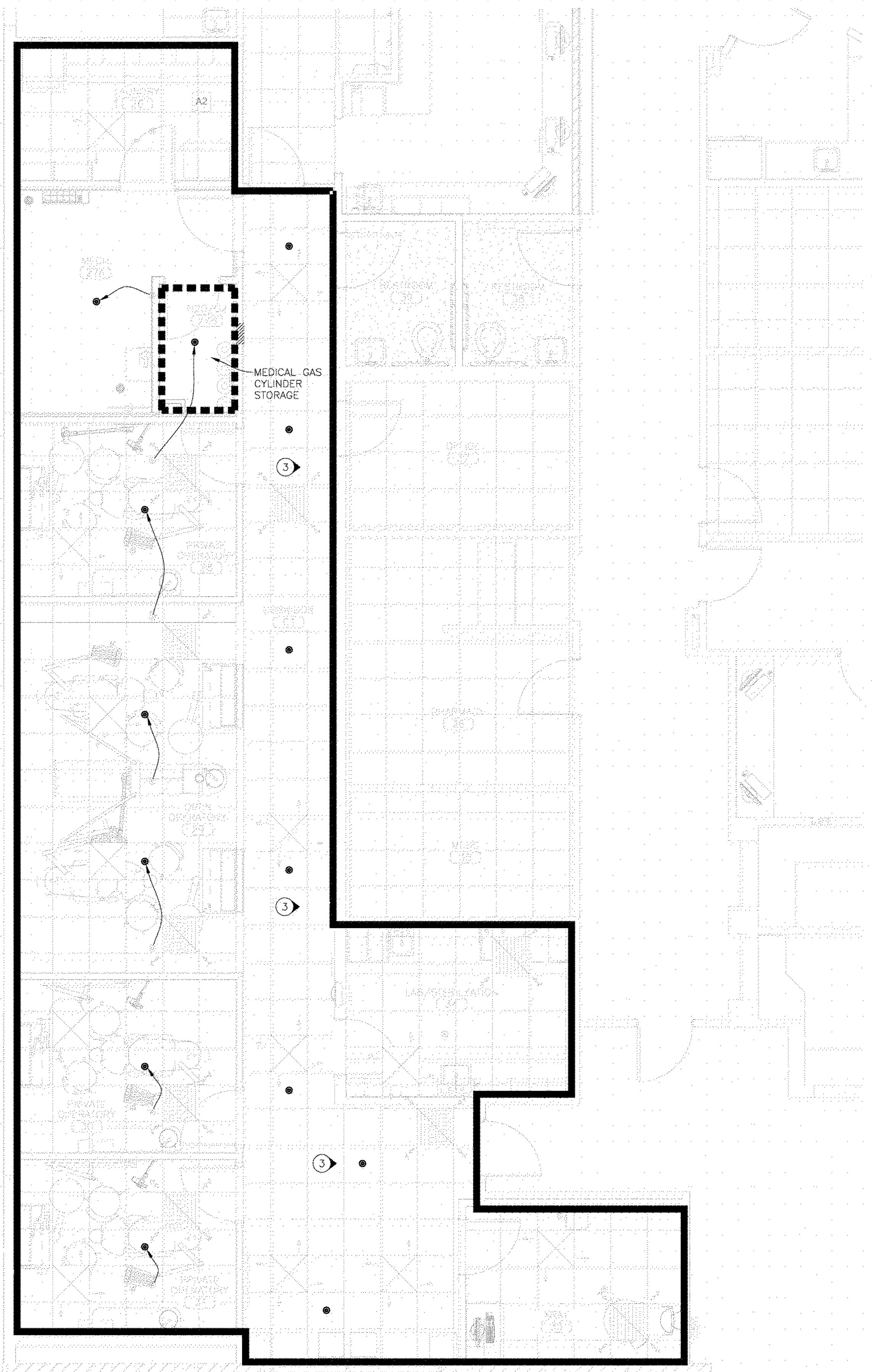
-  LIGHT HAZARD OCCUPANCY WITH A SPRINKLER DENSITY OF 0.10 GPM/SQ FT
-  ORDINARY HAZARD GROUP 1 OCCUPANCY WITH A SPRINKLER DENSITY OF 0.15 GPM/SQ FT
-  EXISTING SPRINKLER
-  RECESSED SPRINKLER WITH CHROME ESCUTCHEON.
-  RELOCATE SPRINKLER LOCATION. PROVIDE NEW SPRINKLER AND BRANCH PIPING



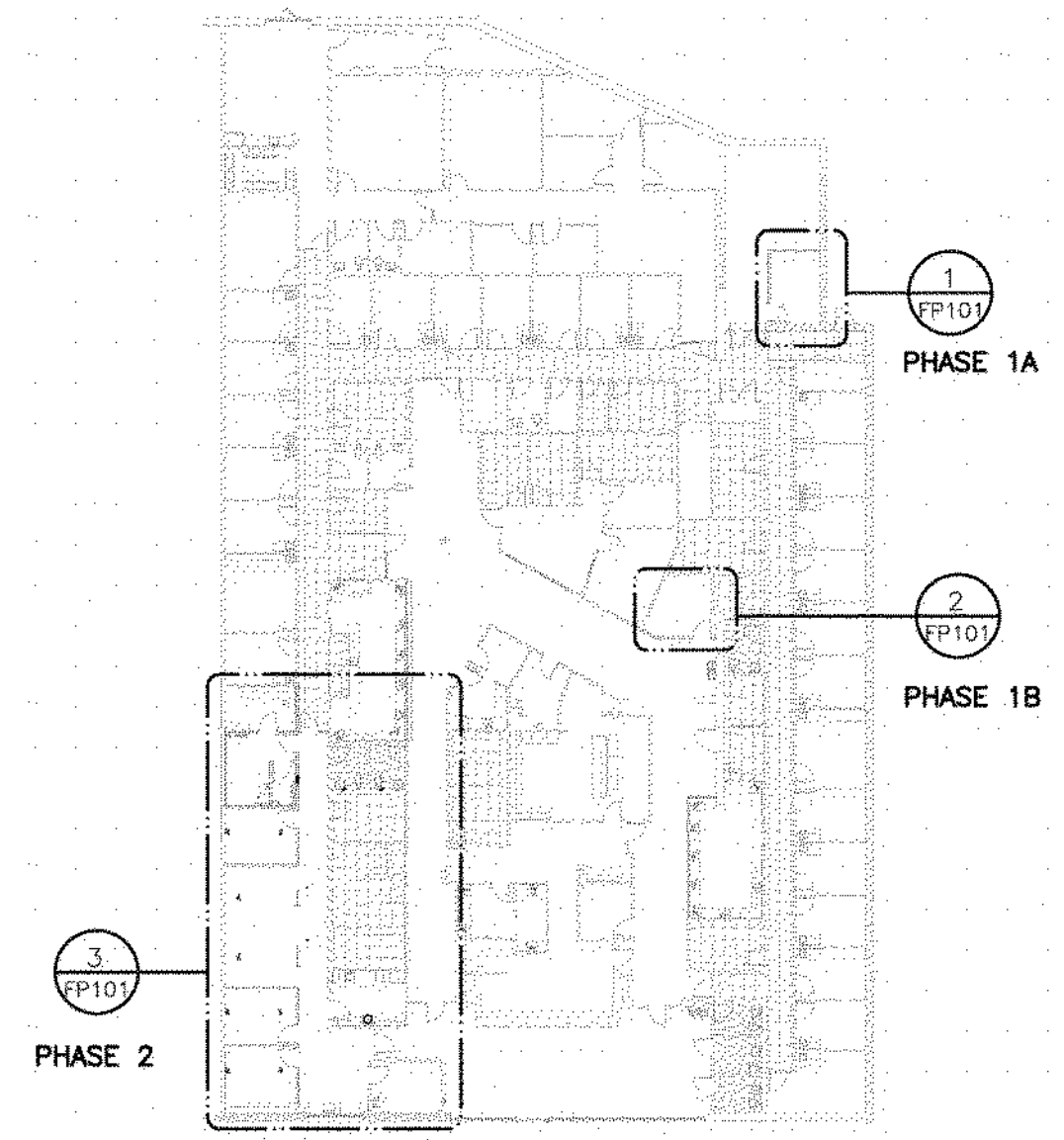
1 SCHEMATIC FIRE PROTECTION PLAN
 SCALE: 1/4"=1'-0"



2 SCHEMATIC FIRE PROTECTION PLAN
 SCALE: 1/4"=1'-0"



3 SCHEMATIC FIRE PROTECTION PLAN
 SCALE: 1/4"=1'-0"



4 FAMILY HEALTH CENTER - KEY PLAN
 SCALE: 1/32"=1'-0"