

Robert A. Messel, AIA
Architect
MO# A-3930

ACCESSIBILITY PLAN GENERAL NOTES

1. THE ABA EXEMPTS MILITARY FACILITIES AND SPACES DESIGNED AND CONSTRUCTED FOR USE EXCLUSIVELY BY "ABLE-BODIED MILITARY PERSONNEL", INCLUDING RESERVE AND NATIONAL GUARD FACILITIES. FACILITIES USED BY DOD IN EMERGENCIES AND NATURAL DISASTERS ARE ALSO EXEMPT. DOD NONETHELESS RECOMMENDS THAT EXEMPTED MILITARY FACILITIES MEET THE STANDARDS TO THE MAXIMUM EXTENT THAT IS REASONABLE AND PRACTICAL BECAUSE FACILITY USES OFTEN CHANGE OVER TIME.
2. ACCORDING TO ABA ACCESSIBILITY STANDARDS FOR DEPARTMENT OF DEFENSE FACILITIES, 203 GENERAL EXCEPTIONS, 203.5 MACHINERY SPACES, SPACES FREQUENTED BY SERVICE PERSONNEL FOR MAINTENANCE, REPAIR, OR OCCASIONAL MONITORING OF EQUIPMENT SHALL NOT BE REQUIRED TO COMPLY WITH THESE REQUIREMENTS OR TO BE ON AN ACCESSIBLE ROUTE. MACHINERY SPACES INCLUDE, BUT ARE NOT LIMITED TO ELEVATOR PITS OR ELEVATOR PENTHOUSES; MECHANICAL, ELECTRICAL OR COMMUNICATIONS EQUIPMENT ROOMS; PIPING OR EQUIPMENT CATWALKS; WATER OR SEWAGE TREATMENT PUMP ROOMS OR STATIONS; ELECTRICAL SUBSTATIONS AND TRANSFORMER VAULTS; AND HIGHWAY AND TUNNEL UTILITY FACILITIES.
3. ACCESSIBLE AREAS HAVE BEEN REVIEWED WITH THE MISSOURI ARMY NATIONAL GUARD

ACCESSIBILITY PLAN LEGEND

DENOTES AREAS THAT ARE ACCESSIBLE - ALL OTHER AREAS ARE NOT REQUIRED TO BE ACCESSIBLE

- ACCESSIBLE AREAS SHALL COMPLY WITH
1. UFC 1-20-0-01 (GENERAL BUILDING REQUIREMENTS), 2-11, THE DESIGN IS DIRECTED TO USE UNIFORM FEDERAL ACCESSIBILITY STANDARDS (UFAS) AND AMERICANS WITH DISABILITIES ACT ACCESSIBILITY GUIDE (ADAAG) IN LIEU OF CHAPTER 11 OF IBC REFERENCES ICC ANS I A117.1-2003. WHILE UFC 1-200-01 DOES NOT REQUIRE THE FACILITY TO COMPLY WITH ICC ANS I A117.1-2003, THE DESIGN WILL COMPLY WITH THIS DOCUMENT AS WELL.

ACCESSIBILITY KEYED NOTES

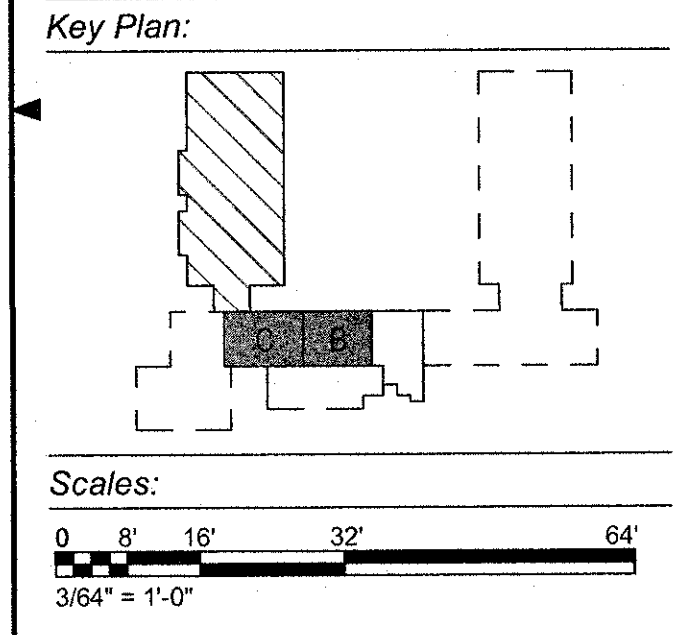
NOTE: NOT ALL KEYED NOTES MAY APPEAR ON EACH DRAWING

- 1 ELECTRICAL / IT / MACHINE ROOMS ARE NOT REQUIRED TO BE ACCESSIBLE PER ABA
- 2 CUSTODIAL ROOMS ARE NOT REQUIRED TO BE ACCESSIBLE PER ABA
- 3 MECHANICAL ROOMS ARE NOT REQUIRED TO BE ACCESSIBLE PER ABA
- 4 DESIGNATED ACCESSIBLE PRIMARY ENTRANCE
- 5 ACCESSIBLE EGRESS DOOR
- 6 STORAGE ROOMS ARE NOT REQUIRED TO BE ACCESSIBLE PER ABA
- 7 RECEIVING AREA IS NOT ACCESSIBLE
- 8 REFER TO SITE DRAWINGS FOR PAVEMENT ON EXTERIOR SIDE OF EGRESS DOORS FOR ACCESSIBLE PATHWAYS
- 9 CANE DETECTION RAIL UNDER STAIR
- 10 PADDLE FOR POWER ASSIST DOORS
- 11 SHOPS AND SHOP SUPPORT AREAS ARE NOT ACCESSIBLE
- 12 ALSE AND SUPPORT AREAS ARE NOT ACCESSIBLE
- 13 EQUIPMENT PLATFORM IS NOT ACCESSIBLE
- 14 TACTILE WARNING IN CONCRETE SLAB ON GRADE - REFER TO D3/A-558

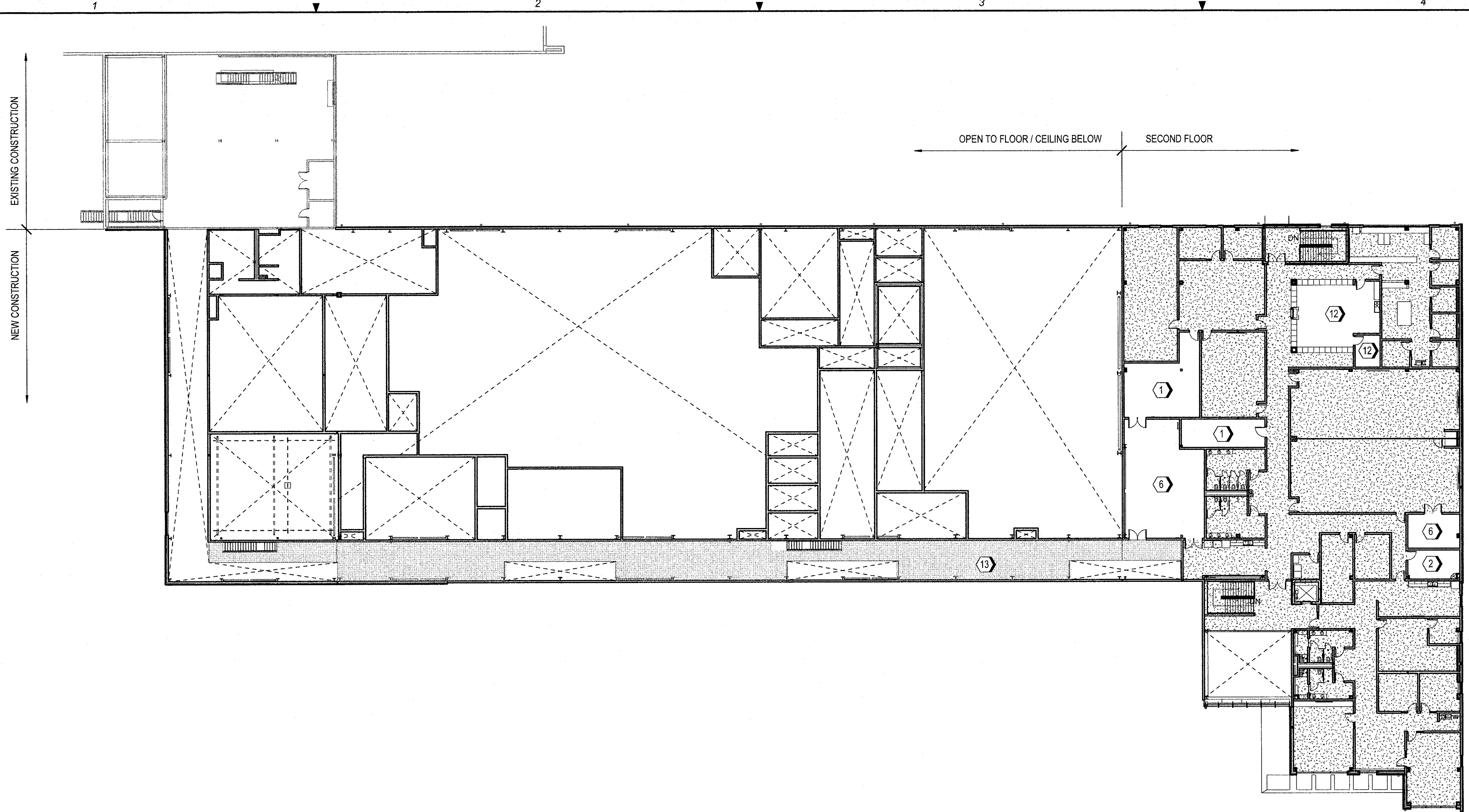
AVCRAD PHASE 3A ADDITION
1107th THEATER AVIATION SUSTAINMENT MAINTENANCE GROUP

MISSOURI ARMY NATIONAL GUARD
GREENE COUNTY
SPRINGFIELD, MISSOURI
CONTRACT NO. T1808-01

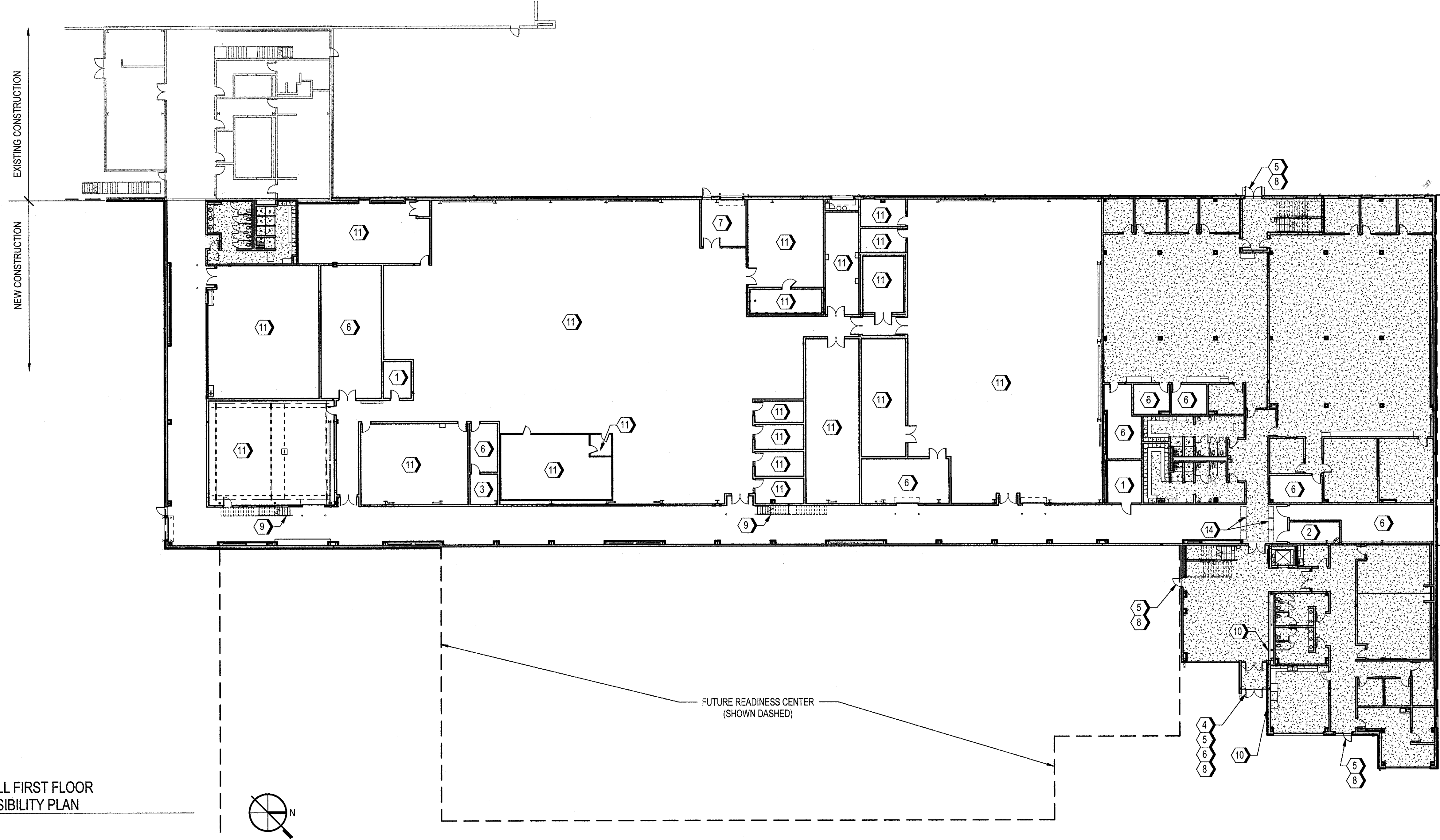
NATIONAL GUARD BUREAU
NGB PROJECT NO. 290709



Project No.: T1808-01
Drawing Title: GENERAL OVERALL ACCESSIBILITY PLANS
Date: 29 JUNE 2018
Designed: AT
Drawn: NF
Checked: RY
Drawing No.: G-121
10 of 322



C1
OVERALL SECOND FLOOR ACCESSIBILITY PLAN
3/64" = 1'-0"
G-001



A1
OVERALL FIRST FLOOR ACCESSIBILITY PLAN
3/64" = 1'-0"
G-001

JACOBS PROJECT NO. F3W91001
7/30/2018 1:45:06 PM BIM_360/105/F3W91000-TASMG-ARCH/MORING_TASMG-ARCH-V17.rvt