

SHEET NOTES

- FOR STRUCTURAL GENERAL NOTES AND ABBREVIATIONS, SEE S-001 & S-002.
- FOR TYPICAL DETAILS, SEE SHEETS S-501 THRU S-506.
- TOP OF SLAB ON GRADE EL. = 100'-0" TYPICAL UNO.
- TOP OF INTERIOR FOOTING ELEVATION = 99'-0" TYPICAL UNO.
- TOP OF PERIMETER FOOTING ELEVATION = 99'-6" TYPICAL UNO.
- PROVIDE WALL BLOCKOUT AS REQUIRED FOR COLUMN/BASE PLATE INSTALLATION.
- PROVIDE THICKENED SLABS @ ALL NON-LOAD BEARING CMU WALLS PER A5/S-503 TYPICAL. THICKENED SLABS/NON-LOAD BEARING WALLS NOT SHOWN. SEE ARCHITECTURAL DRAWINGS FOR WALL LOCATIONS.
- COORDINATE STEP FOOTING LOCATIONS AND ELEVATIONS WITH UNDERGROUND UTILITIES.
- SEE D1/S-502 FOR PLASTER SCHEDULE.

KEYED NOTES (SEE PLAN FOR LOCATION OF KEY NOTES. SOME NOTES MAY NOT BE USED ON THIS DRAWING.)

- SEE C1, C2, AND D5/S-502 FOR ADDITIONAL INFO AT ELEVATOR PIT.
- THICKENED SLAB AT STAIRS. SEE A1/S-502. COORDINATE STAIR LOCATION WITH ARCHITECTURAL DRAWINGS.
- CL OF EXISTING 5'-0" Ø RCP. REFER TO CIVIL DRAWINGS FOR INVERT ELEVATIONS. FIELD LOCATE/VERIFY AND COORDINATE FOOTING CONSTRUCTION WITH PIPE.
- EXISTING 11'-0" x 11'-0" x 1'-9" SPREAD FOOTING @ TIFTG EL. = 95'-7".
- EXISTING HSS6x6x3/8 COLUMN. T/STL EL. = 127'-5".
- RECESSED SLAB - SEE ARCHITECTURAL DRAWINGS AND A3/S-502 FOR ADDITIONAL INFORMATION. COORDINATE RECESS WITH ARCHITECTURAL DRAWINGS AND MANUFACTURER.
- CRANE POST BY MANF. COORDINATE RECESS AND INSTALLATION WITH MANF.
- RECESS SLAB AS REQUIRED FOR SHOWER. SEE ARCHITECTURAL DRAWINGS AND A3/S-502 FOR ADDITIONAL INFORMATION.
- POUR THE END OF THE GRADE BEAM DOWN 6" ONTO THE MAT FOOTING BELOW.
- TACTILE WARNING SLAB EMBED - SEE ARCHITECTURAL DRAWINGS FOR ADDL INFORMATION.
- WIND POST - SEE GIRT ELEVATIONS & D4/S-502 FOR TYPICAL BASE CONNECTION DETAIL.
- WIND POST - SEE GIRT ELEVATIONS & D1/S-506 FOR BASE CONNECTION DETAIL.
- WIND POST - SEE GIRT ELEVATIONS & D2/S-506 FOR BASE CONNECTION DETAIL.

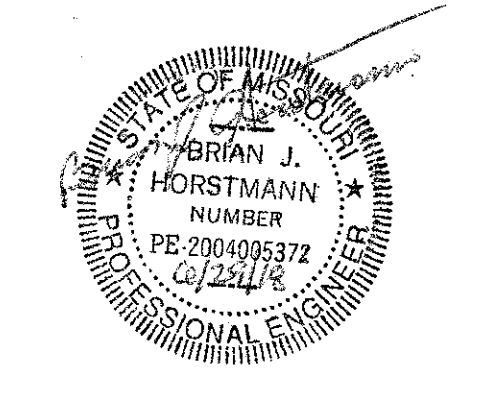
COLUMN SCHEDULE					
TYPE	SIZE	BASE PL SIZE (LxWxT)	ANCHOR RODS	EMBED LENGTH	DETAIL A1 / S-505
C1	HSS6x6x3/8	12" x 12" x 3/4"	(4) - 3/4" DIA	9"	TYPE 1
C2	HSS6x6x5/8	12" x 12" x 3/4"	(4) - 3/4" DIA	9"	TYPE 1
C2a	HSS6x6x5/8	24" x 16" x 1 1/4"	(4) - 1 1/4" DIA	24"	TYPE 8
C3	HSS8x8x3/8	14" x 14" x 1"	(4) - 3/4" DIA	9"	TYPE 1
C4	W10X39	16" x 16" x 1"	(4) - 3/4" DIA	9"	TYPE 2
C4a	W10X39	26" x 16" x 1 1/4"	(4) - 1 1/4" DIA	24"	TYPE 5
C5	W12X65	15" x 15" x 1"	(4) - 3/4" DIA	9"	TYPE 3
C5a	W12X65	26" x 20" x 1 1/4"	(4) - 1 1/4" DIA	24"	TYPE 4
C5b	W12X65	26" x 20" x 1 1/4"	(4) - 1 1/4" DIA	24"	TYPE 5 W/ SHEAR LUG
C5c	W12X65	26" x 20" x 1 1/4"	(4) - 1 1/4" DIA	24"	TYPE 5
C5d	W12X65	15" x 15" x 1"	(4) - 3/4" DIA	24"	TYPE 3
C6	W12X72	15" x 15" x 1"	(4) - 3/4" DIA	9"	TYPE 3
C6a	W12X72	26" x 20" x 1 1/4"	(4) - 1 1/4" DIA	24"	TYPE 5
C7	W14X90	24" x 24" x 1 1/4"	(4) - 1 1/4" DIA	24"	TYPE 5
C7a	W14X90	30" x 20" x 1 1/4"	(4) - 1 1/4" DIA	24"	TYPE 5
C7b	W14X90	30" x 20" x 1 1/4"	(4) - 1 1/4" DIA	24"	TYPE 4 W/ SHEAR LUG
C7c	W14X90	18" x 18" x 1"	(4) - 3/4" DIA	24"	TYPE 3
C8	W14x176	28" x 28" x 1 1/2"	(4) - 1 1/2" DIA	24"	TYPE 6
C9	W14x176	28" x 28" x 1 1/2"	(4) - 1 1/2" DIA	24"	TYPE 7

COLUMN SCHEDULE NOTES:
 1. BOTTOM OF BASE PLATE ELEVATION SHALL BE 1 1/2" ABOVE TOP OF FOOTING AND PLASTER ELEVATIONS, TYP. UNO.

FOOTING SCHEDULE				
TYPE	WIDTH	LENGTH	THICKNESS	REINFORCEMENT
F30	3'-0"	6'-0"	1'-4"	4 #5 LW & 7 #5 SW BOTTOM
F40	4'-0"	4'-0"	1'-4"	10 #4 EACH WAY BOTTOM
F50	5'-0"	5'-0"	1'-4"	14 #4 EACH WAY BOTTOM
F60	6'-0"	6'-0"	1'-4"	11 #4 EACH WAY BOTTOM
F70	7'-0"	7'-0"	1'-4"	8 #5 EA WAY BOTTOM
F80	8'-0"	8'-0"	1'-4"	6 #7 EACH WAY BOTTOM
F81	8'-0"	8'-0"	2'-6"	12 #6 EACH WAY TOP & BOTTOM
F82	8'-0"	12'-0"	2'-6"	12 #6 LW & 18 #6 SW TOP & BOTTOM
F90	9'-0"	9'-0"	1'-4"	9 #6 EACH WAY BOTTOM
F91	9'-0"	9'-0"	2'-6"	14 #6 EACH WAY TOP & BOTTOM
F100	10'-0"	10'-0"	2'-6"	11 #7 EACH WAY TOP & BOTTOM
F110	11'-0"	11'-0"	2'-6"	12 #7 EACH WAY TOP & BOTTOM
CF18	16'-0"	18'-0"	1'-4"	#5 @ 10" OC EA WAY TOP & BOTTOM
CF24	10'-0"	24'-0"	2'-6"	11 #7 LW TOP & BOTTOM #7 @ 10" SW TOP & BOTTOM
CF26	6'-0"	26'-0"	2'-6"	8 #5 LW TOP & BOTTOM #7 @ 10" SW TOP & BOTTOM
CF28	8'-0"	28'-0"	2'-6"	9 #7 LW TOP & BOTTOM #7 @ 10" SW TOP & BOTTOM
CF34	18'-0"	35'-5"	3'-0"	#8 @ 12" OC EA WAY TOP & BOTTOM

FOOTING SCHEDULE NOTES:
 ALL COLUMN FOOTINGS ARE CENTERED UNDER COLUMN CENTER LINES, TYP. UNO.

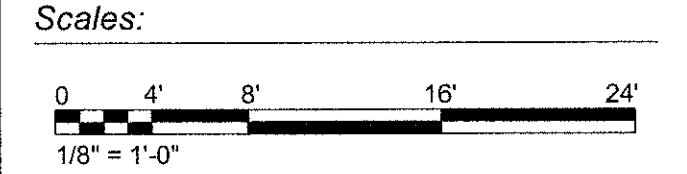
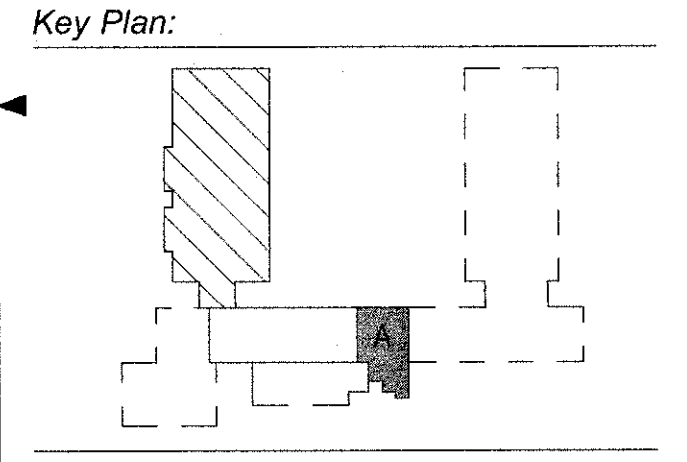
JACOBS
 501 North Broadway, Saint Louis, Missouri 63102
 TEL: 314.335.4900
 JACOBS ENGINEERING GROUP, INC.
 Missouri State Certificate of Authority #000704
 Consultant - Civil
 MILLENNIA PROFESSIONAL SERVICES OF ILLINOIS, LTD
 11 Executive Drive, Suite 12
 Fairview Heights, Illinois, 62208
 Tel: 618-924-9610
 Missouri State Certificate of Authority #2012009247



Brian J. Horstmann, PE
 Structural Engineer
 MO# PE-200405372

REV	DESCRIPTION	DATE

AVCRAD PHASE 3A ADDITION
 1107th THEATER AVIATION SUSTAINMENT MAINTENANCE GROUP
 MISSOURI ARMY NATIONAL GUARD
 GREENE COUNTY
 SPRINGFIELD, MISSOURI
 CONTRACT NO. T1808-01
 NATIONAL GUARD BUREAU
 NGB PROJECT NO. 290109



Project No.: T1808-01
 Drawing Title: **STRUCTURAL PARTIAL FOUNDATION PLAN AREA A**

Date: 29 JUNE 2018
 Designed: TLB
 Drawn: EMF
 Checked: BJH
S-111
 64 of 322

JACOBS PROJECT NO. F3W01001
 7/30/2018 9:53:29 AM
 BIM 360://b-f3w01000-TASMG-ARCH/ARCH/TASMG-STRUCT-V17.rvt

A1 PARTIAL FOUNDATION PLAN - AREA A
 1/8" = 1'-0"
 S-101