

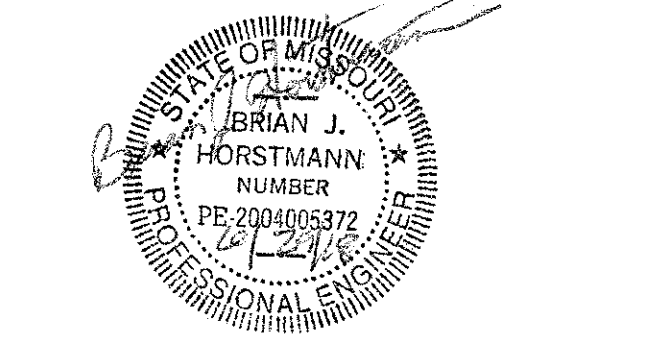
**SHEET NOTES**

1. FOR STRUCTURAL GENERAL NOTES AND ABBREVIATIONS, SEE S-001 & S-002.
2. FOR TYPICAL DETAILS, SEE SHEETS S-501 THRU S-506.
3. SEE S-101 FOR COLUMN SIZES AND SCHEDULE.
4. BEAMS AND JOISTS SHALL BE SPACED EQUALLY BETWEEN GIRDERS AND GRIDLINES, TYP UNO.
5. DESIGN AND PROVIDE BEAM CONNECTIONS WITH A CAPACITY GREATER THAN THE (LRFD) SHEAR LOAD INDICATED ON PLAN (IN KIIPS).
6. DESIGN AND DETAIL STAIRS AS INDICATED AND PER SPECIFICATIONS. FRAMING INDICATED SHALL BE USED AS MINIMUM SIZES AND SHALL BE VERIFIED PER BUILDING CODE AND SPECIFICATION REQUIREMENTS. SEE ARCHITECTURAL DRAWINGS FOR ADDITIONAL INFO.
7. PROVIDE BEARING PLATES FOR ALL BEAMS BEARING ON CMU AS INDICATED PER A1 & A3/S-503, TYP UNO.
8. SEE STRUCTURAL GENERAL NOTES FOR LOOSE LINTELS AT VENEER OPENINGS TYPICAL UNO.
9. SEE SPECIFICATIONS AND DRAWING G-105 FOR FIREPROOFING REQUIREMENTS.
10. WHERE DRAWINGS INDICATE MOMENT CONNECTION SYMBOL, CONTRACTOR SHALL DESIGN AND PROVIDE A FULLY RESTRAINED MOMENT CONNECTION TYP. UNO.

**KEYED NOTES** (SEE PLAN FOR LOCATION OF KEY NOTES. SOME NOTES MAY NOT BE USED ON THIS DRAWING.)

- ① 6" CONCRETE SLAB W/ #4 @ 8" OC MAX EW @ MID-DEPTH (SHORT BARS IN BOTT LAYER). T/SLAB EL = 109'-8".
- ② 1 1/2"x3/16" 19W4 GALVANIZED STEEL GRATING. BOTTOM OF GRATING/TOP OF STEEL ELEVATION = 114'-10 1/2" TYP UNO. COORDINATE ALL PENETRATIONS THROUGH GRATING. PROVIDE BANDING AT ENDS OF GRATING AND AROUND PERIMETER OF PENETRATIONS.
- ③ SEE A4/S-504 FOR ADDITIONAL SLAB REINFORCEMENT OR BEAM FRAMING AT FLOOR OPENINGS. COORDINATE FLOOR OPENINGS AND BEAM LOCATIONS WITH CONTRACTOR.
- ④ EXISTING HSS6x6x3/8 COLUMN. T/STL EL = 127'-5".
- ⑤ L6x3 1/2x5/16 LLV BETWEEN BEAMS - SEE C2/S-523.
- ⑥ MECHANICAL DUCT FLOOR OPENING, COORDINATE SIZE AND LOCATION WITH MECHANICAL CONTRACTOR.

**JACOBS**  
 501 North Broadway, Saint Louis, Missouri 63102  
 TEL: 314.335.4000  
 JACOBS ENGINEERING GROUP, INC.  
 Missouri State Certificate of Authority #000704  
 Consultant - Civil  
 MILLENNIA PROFESSIONAL SERVICES OF ILLINOIS, LTD.  
 11 Executive Drive, Suite 12  
 Fairview Heights, Illinois, 62208  
 Tel: 618-624-8610  
 Missouri State Certificate of Authority #2012009247

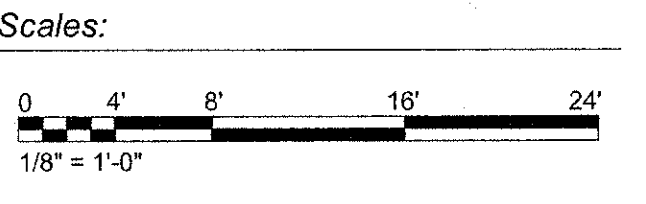
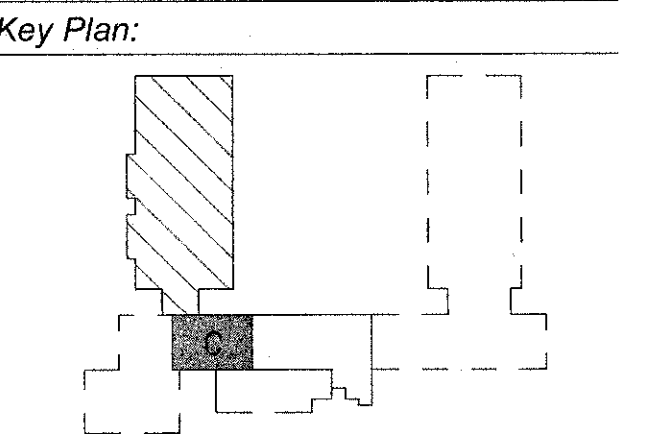


Brian J. Horstmann, PE  
 Structural Engineer  
 MO# PE-200405372

REV	DESCRIPTION	DATE

JACOBS PROJECT NO. F3W91001  
 7/30/2018 9:53:36 AM BIM 360://us-f3w91000-TASMG-ARCH/IMAGING/TASMG-STRUCT-V17.rvt

**AVCRAD PHASE 3A ADDITION**  
 1107th THEATER AVIATION SUSTAINMENT MAINTENANCE GROUP  
 MISSOURI ARMY NATIONAL GUARD  
 GREENE COUNTY  
 SPRINGFIELD, MISSOURI  
 CONTRACT NO. T1808-01  
 NATIONAL GUARD BUREAU  
 NGB PROJECT NO. 290109



Project No.: T1808-01  
 Drawing Title: STRUCTURAL PARTIAL SECOND FLOOR FRAMING PLAN AREA C  
 Date: 29 JUNE 2018  
 Designed: TLB  
 Drawn: EMF  
 Checked: BJH  
 Drawing No.: S-123  
 69 of 322

**A1** PARTIAL SECOND FLOOR FRAMING PLAN - AREA C  
 1/8" = 1'-0"