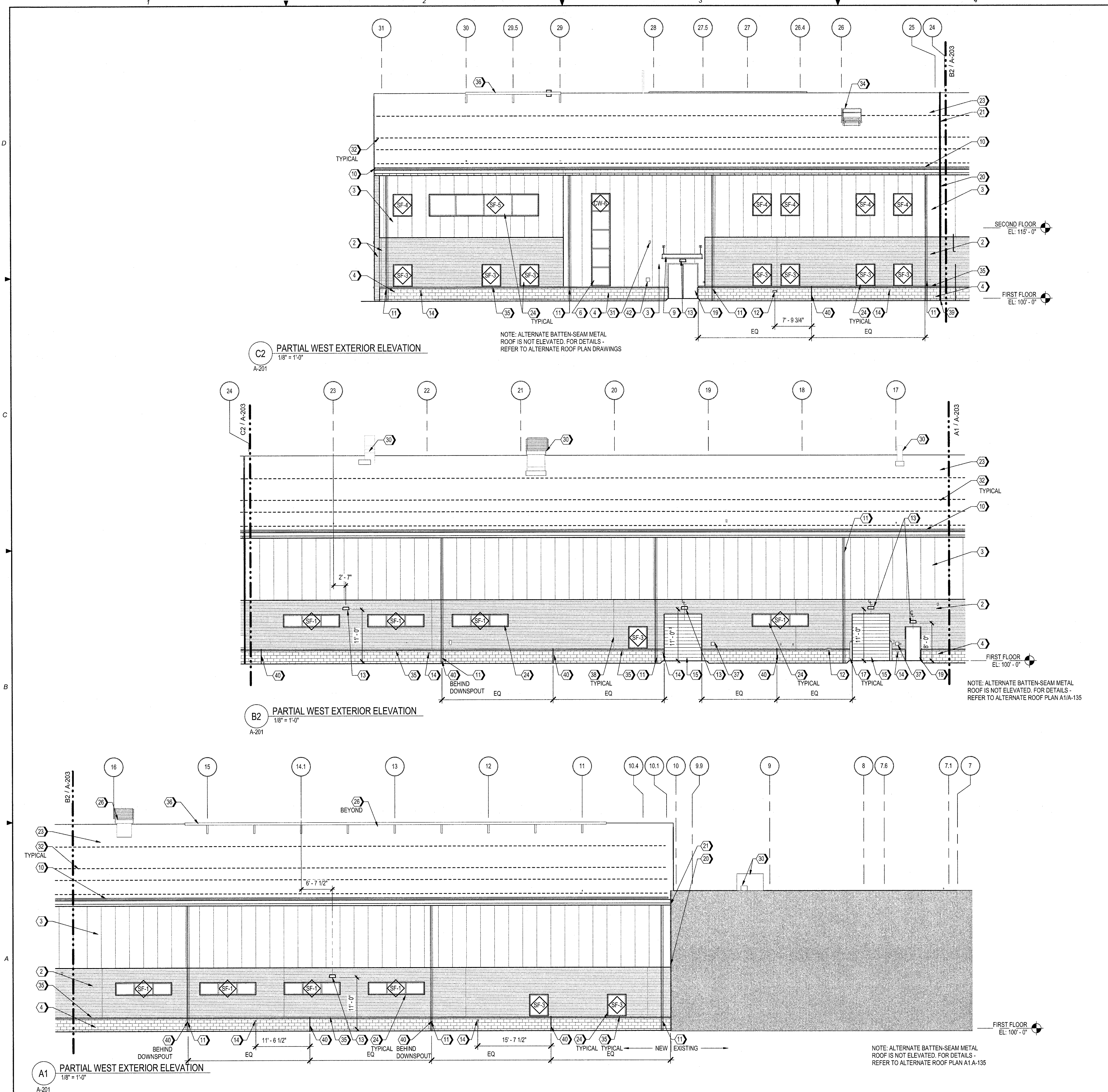


JACOBS PROJECT NO. F3W91001  
7/30/2018 11:59:11 AM BIM 360://s-f3w91000-TASMG-ARCHMOARNG-TASMG-ARCH-V17.M



**EXTERIOR ELEVATION KEYED NOTES** NOTE: NOT ALL KEYED NOTES MAY APPEAR ON EACH DRAWING

- 1 FORMED METAL WALL PANELS - MP-1
- 2 FORMED METAL WALL PANELS - MP-2
- 3 INSULATED METAL WALL PANELS - MP-3
- 4 CMU VENEER
- 5 VERTICAL BATTEN-SEAM METAL ROOF PANELS
- 6 GLAZED ALUMINUM CURTAIN WALL
- 7 SLOPED GLAZING ASSEMBLY
- 8 METAL COMPOSITE PANEL CANOPY
- 9 MANUFACTURED CANOPY - REFER TO C2/A-511
- 10 BUILT IN GUTTER - REFER TO C2/A-535 FOR CONDITION AT PVC MEMBRANE AND C1/A-534 FOR CONDITION AT BATTEN-SEAM METAL ROOF
- 11 DOWNSPOUT
- 12 WALL HYDRANT - REFER TO PLUMBING
- 13 LIGHT FIXTURE - REFER TO ELECTRICAL
- 14 RECEPTACLE - REFER TO ELECTRICAL
- 15 OVERHEAD COILING DOOR
- 16 RIDGE CAP - REFER TO A1/A-531
- 17 BOLLARD - REFER TO A3/A-532
- 18 FIXED LOUVER
- 19 HOLLOW METAL DOOR AND FRAME
- 20 VERTICAL EXPANSION JOINT (METAL PANEL) - REFER TO B5/A-535 FOR MP-2, REFER TO C5/A-535 FOR MP-3
- 21 ROOF EXPANSION JOINT - REFER TO D3/A-533 TO MEMBRANE CONDITION AND A5/A-535 FOR BATTEN SEAM METAL ROOFING CONDITION
- 22 BATTEN-SEAM METAL ROOF PANELS
- 23 PVC MEMBRANE ROOFING SYSTEM
- 24 STOREFRONT GLAZING ASSEMBLY
- 25 ALUMINUM FRAMED STOREFRONT ENTRANCE DOOR IN CURTAIN WALL SYSTEM
- 26 MECHANICAL EQUIPMENT THROUGH ROOF WITH CURB - REFER TO MECHANICAL AND C2/A-533
- 27 EXPOSED STRUCTURAL STEEL / STEEL DECK
- 28 METAL COMPOSITE PANEL WALL ASSEMBLY
- 29 METAL COPING
- 30 EQUIPMENT ON PREFABRICATED ROOF CURB - FOR DETAILS OF CURB REFER TO C2/A-533.
- 31 FIRE PROTECTION DEVICE - REFER TO FIRE PROTECTION
- 32 SNOW GUARD - REFER TO C1, C2/A-531
- 33 EXTRUDED METAL TRIM
- 34 ROOF HATCH WITH SAFETY RAIL - REFER TO A5/A-531
- 35 CAST STONE MASONRY - REFER TO A2/A-535
- 36 ANTENNAE RAIL - REFER TO B3/A-533
- 37 SIGNAGE - REFER TO SIGNAGE PLANS
- 38 PROVIDE END LAPS IN FORMED METAL PANELS AS INDICATED - REFER TO D3/A-532
- 39 VERTICAL EXPANSION JOINT (CMU) - REFER TO B4/A-535
- 40 CMU CONTROL JOINT - REFER TO D1/A-532
- 41 RIDGE FLASHING - REFER TO C1/A-535 FOR APPLICATION OF PVC ROOFING, AND D1/A-535 FOR APPLICATION ON BATTEN-SEAM METAL ROOF (OLI)
- 42 COMMUNICATIONS DEVICE - REFER TO TELECOM
- 43 FIRE DEPARTMENT KEY ACCESS BOX
- 44 ADA DOOR CONTROL PUSH PLATE

**JACOBS**  
501 North Broadway, Saint Louis, Missouri 63102  
TEL: 314.335.4000

JACOBS ENGINEERING GROUP, INC.  
Missouri State Certificate of Authority #000704

Consultant - Civil  
MILLENNIA PROFESSIONAL SERVICES OF ILLINOIS, LTD.  
11 Executive Drive, Suite 12  
Fairview Heights, Illinois, 62208  
Tel: 618-424-8610  
Missouri State Certificate of Authority #2012009247

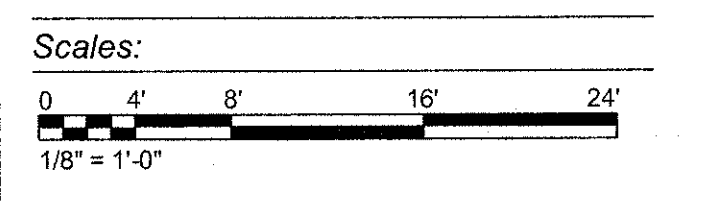
Robert A. Messel, AIA  
Architect  
MO# A-3930

REV	DESCRIPTION	DATE

**AVCRAD PHASE 3A ADDITION**  
1107th THEATER AVIATION SUSTAINMENT MAINTENANCE GROUP

MISSOURI ARMY NATIONAL GUARD  
GREENE COUNTY  
SPRINGFIELD, MISSOURI  
CONTRACT NO. T1808-01

NATIONAL GUARD BUREAU  
NGB PROJECT NO. 290109



Project No.: T1808-01  
Drawing Title: ARCHITECTURAL PARTIAL EXTERIOR ELEVATIONS  
Date: 29 JUNE 2018  
Designed: AT  
Drawn: NF  
Checked: RY  
Drawing No.: A-203  
126 of 322