

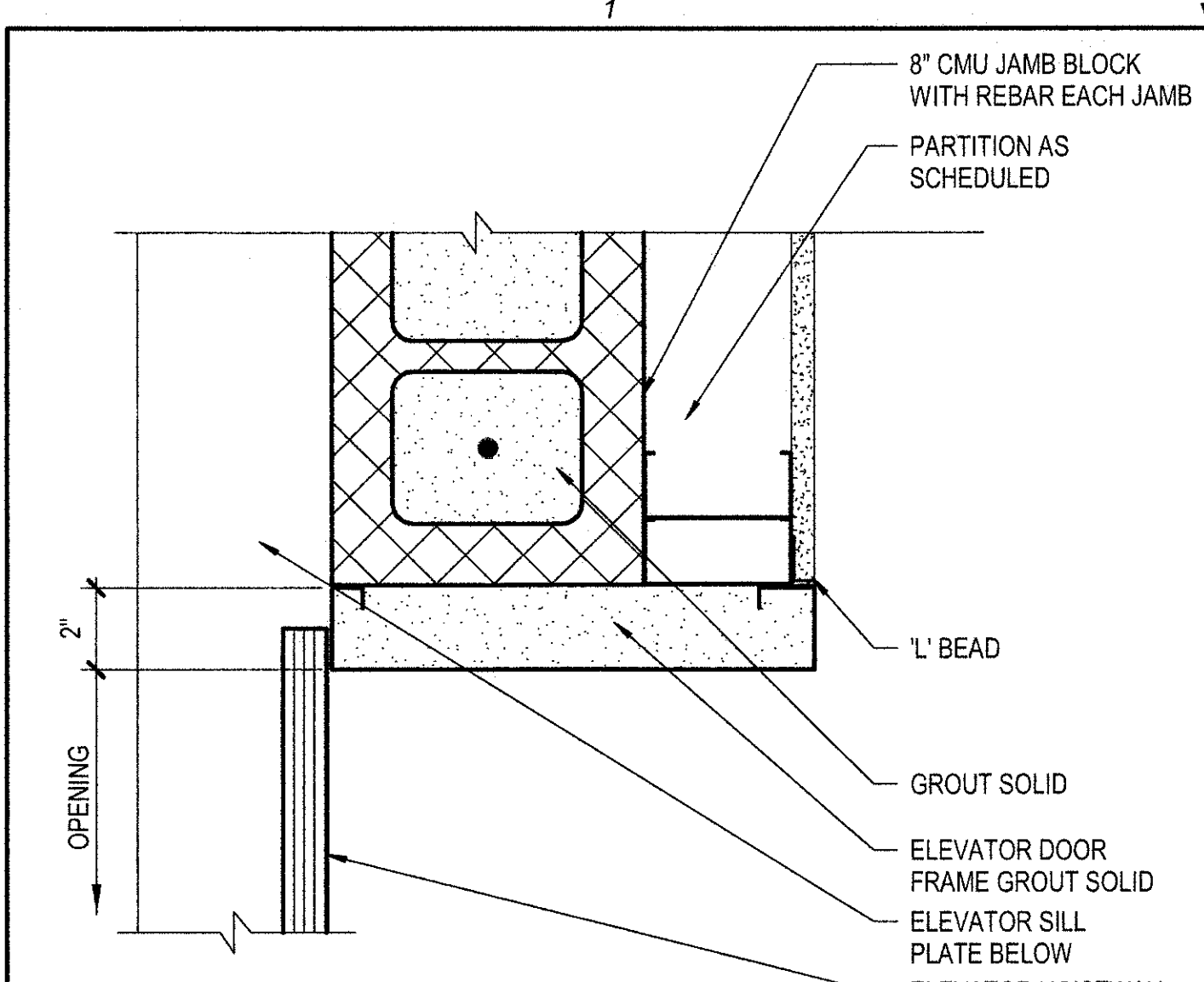
Robert A. Messel, AIA
 Architect
 MO# A-3930

REV	DESCRIPTION	DATE

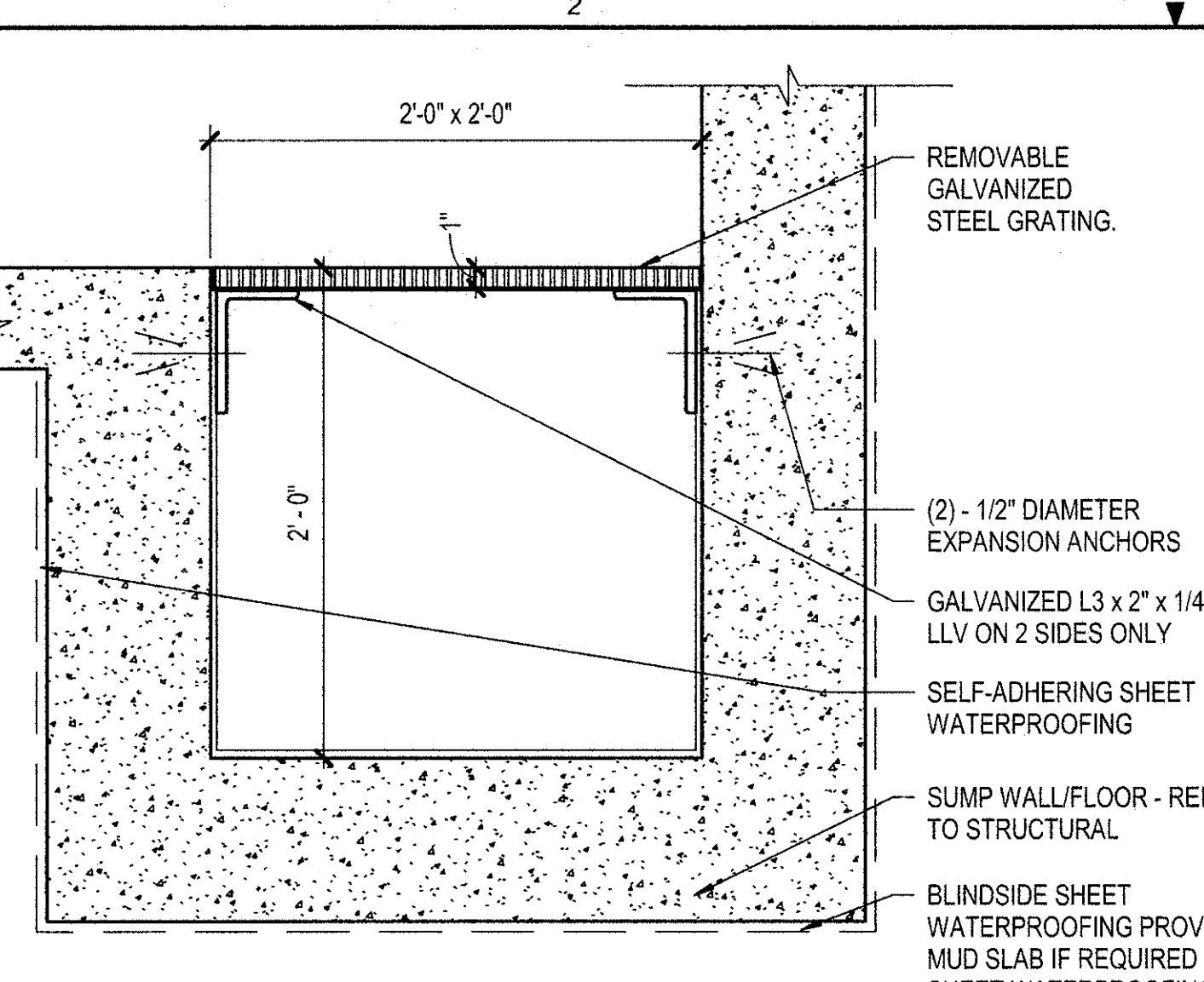
AVCRAD PHASE 3A ADDITION
 1107th THEATER AVIATION SUSTAINMENT MAINTENANCE GROUP
 MISSOURI ARMY NATIONAL GUARD
 GREENE COUNTY
 SPRINGFIELD, MISSOURI
 CONTRACT NO. T1808-01
 NATIONAL GUARD BUREAU
 NGB PROJECT NO. 290109

ELEVATOR GENERAL NOTES

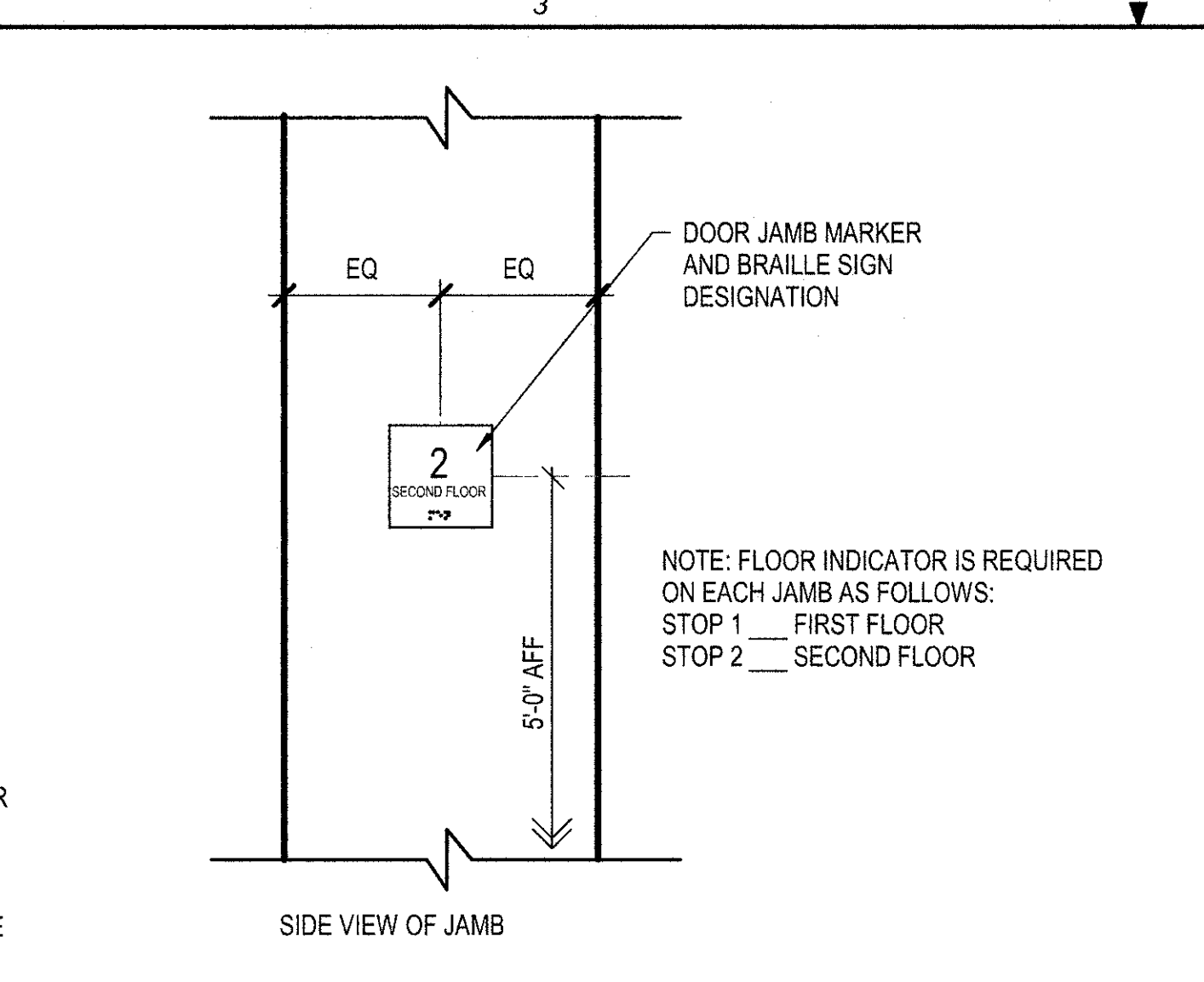
- ELEVATOR AND HOISTWAY SHALL BE IN FULL COMPLIANCE WITH ASTM A17.1 CURRENT EDITION AND LATEST CHANGES THROUGH DATE OF BIDDING.
- COORDINATE OPENINGS IN HOISTWAY PARTITIONS FOR HALL PUSH BUTTON STATION AND HALL LANTERN FIXTURES. GROUT BEHIND THE SIGNAL FIXTURES ON THE INSIDE OF THE HOISTWAY.
- ELEVATOR INSTALLER SHALL COORDINATE WITH CONTRACTOR TO PROVIDE OVERSIZED OPENING AT EACH HOISTWAY ENTRANCE AS REQUIRED FOR ELEVATOR INSTALLATION. UPON COMPLETION OF THE ELEVATOR INSTALLATION COORDINATE CLOSURE OF THE HOISTWAY TO THE DOOR FRAMES.
- ELEVATOR CONTRACTOR SHALL CONFIRM SIZE OF STEEL SILL ANGLES PRIOR TO BIDDING AND MAKE REQUIRED ADJUSTMENTS TO SIZE OF SILL ANGLES INDICATED ON DETAILS.
- PROVIDE CUTOUTS AS REQUIRED FOR ELECTRONICS AND PLUMBING.
- FOR ELEVATOR CAB REFLECTED CEILING PLAN REFER TO D4/A-556. BASIS OF DESIGN: OTIS POLISHED STAINLESS STEEL. COMPACT FLUORESCENT LIGHTING.
- CONTROL PANEL SHALL BE IN SECOND FLOOR JAMB.
- PROVIDE EMERGENCY SIGN AS REQUIRED BY IBC CHAPTER 30.
- FOR ACCESSIBILITY NOTES - REFER TO A4/A-556
- FOR CAB ELEVATIONS - REFER TO C4/A-556



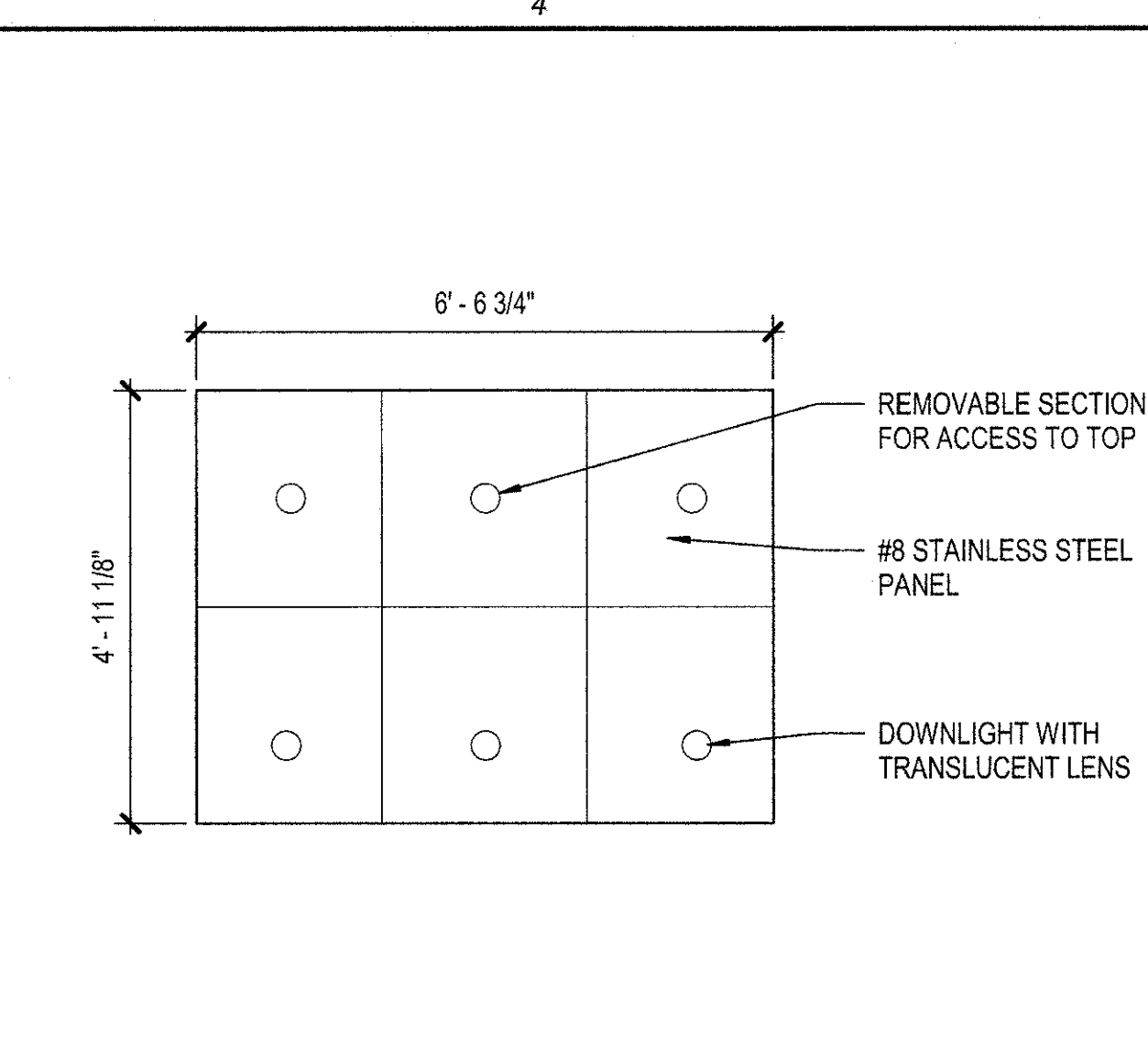
D1 ELEVATOR DOOR JAMB DETAIL
 3\"/>



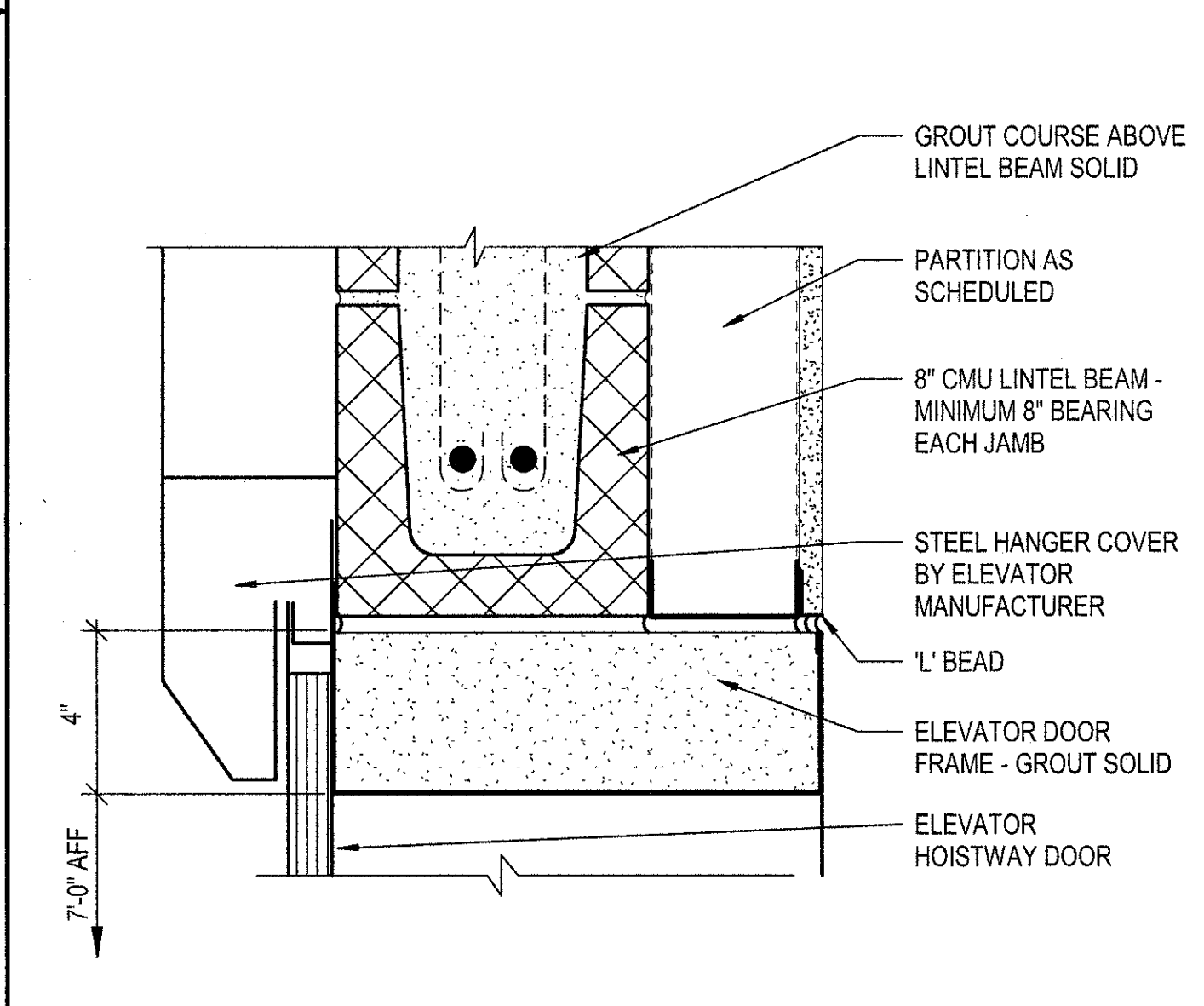
D2 SUMP PUMP PIT DETAIL
 1 1/2\"/>



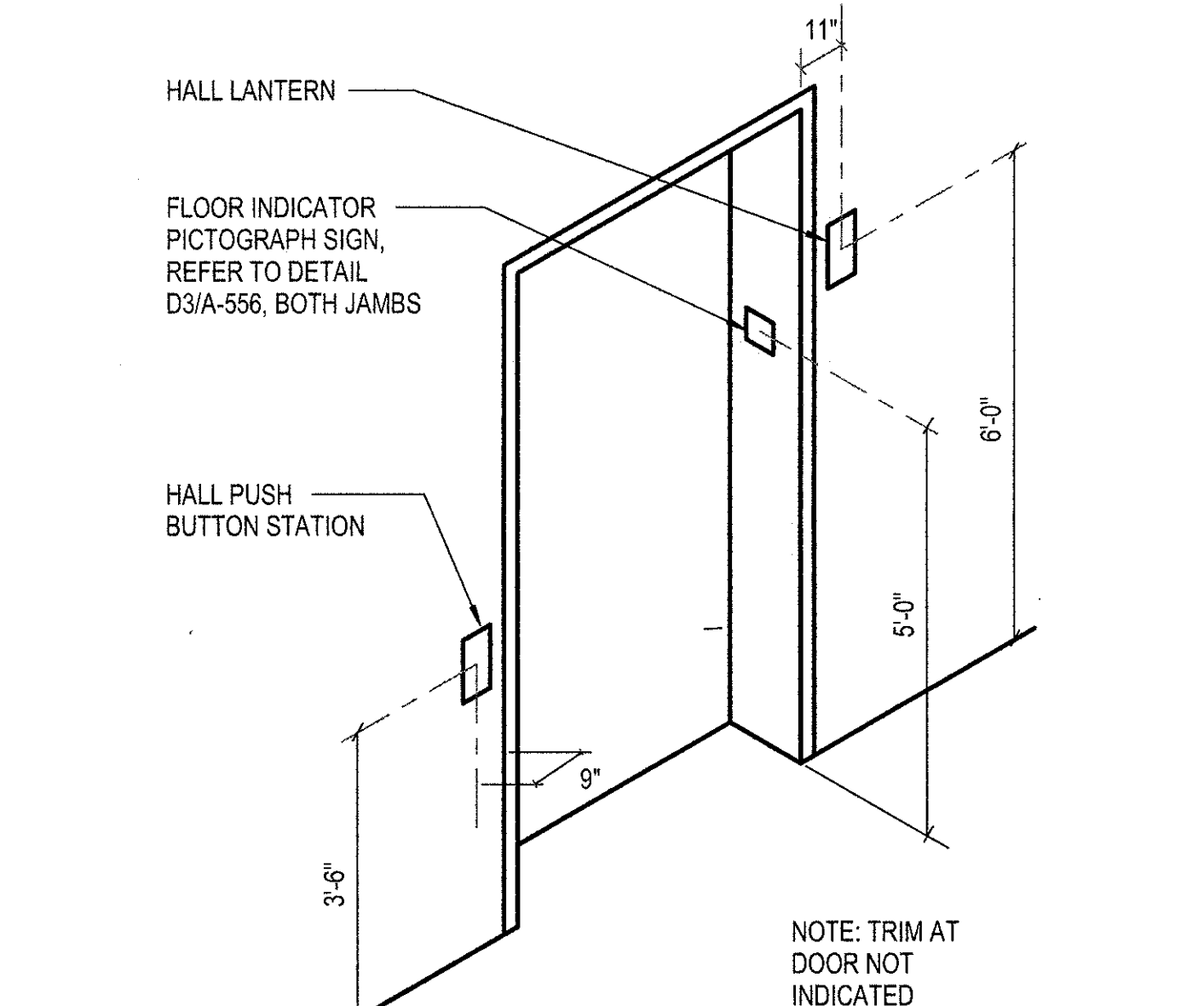
D3 FLOOR INDICATOR DETAIL
 NOT TO SCALE
 A-556



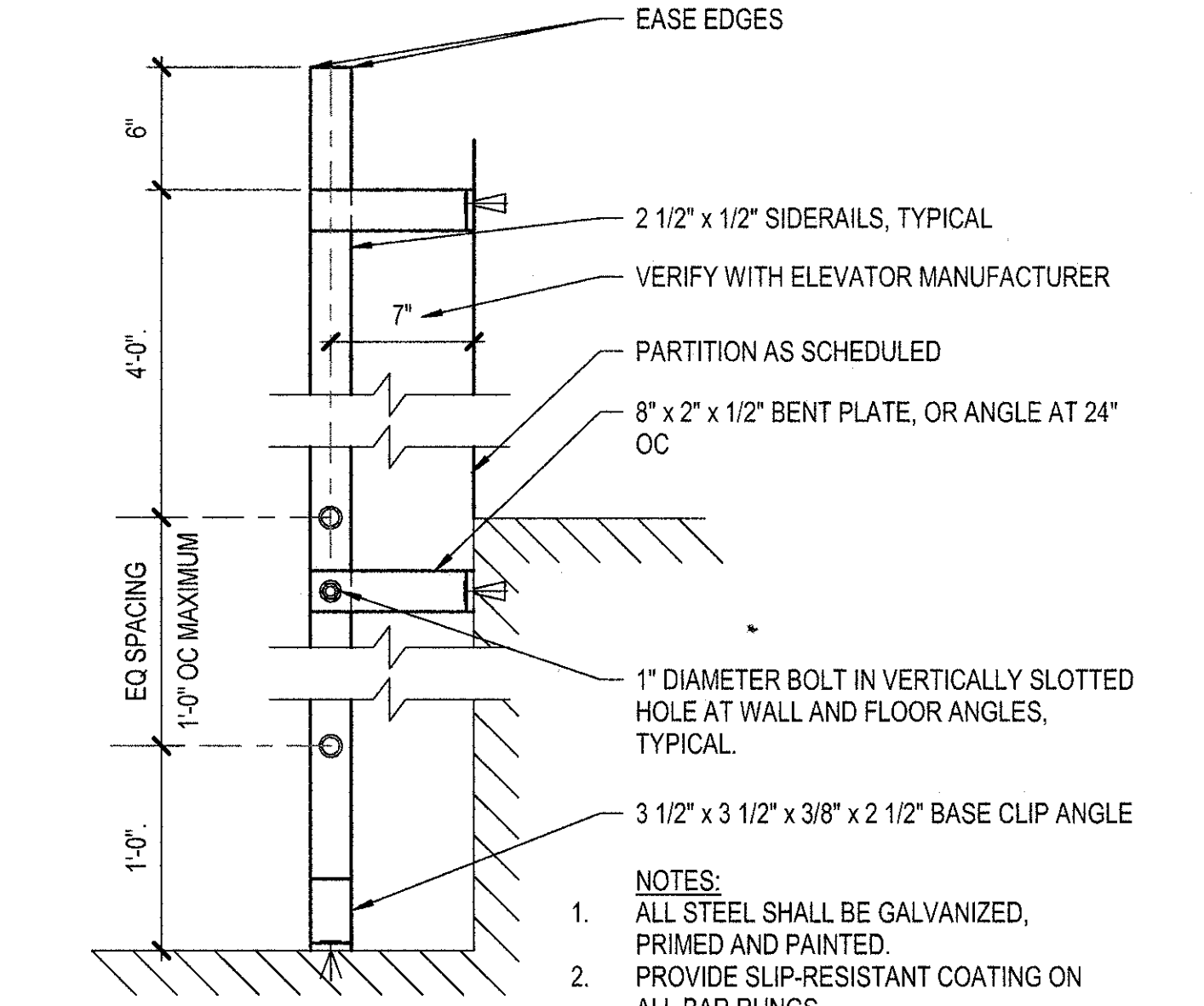
D4 ELEVATOR REFLECTED CEILING PLAN
 1/2\"/>



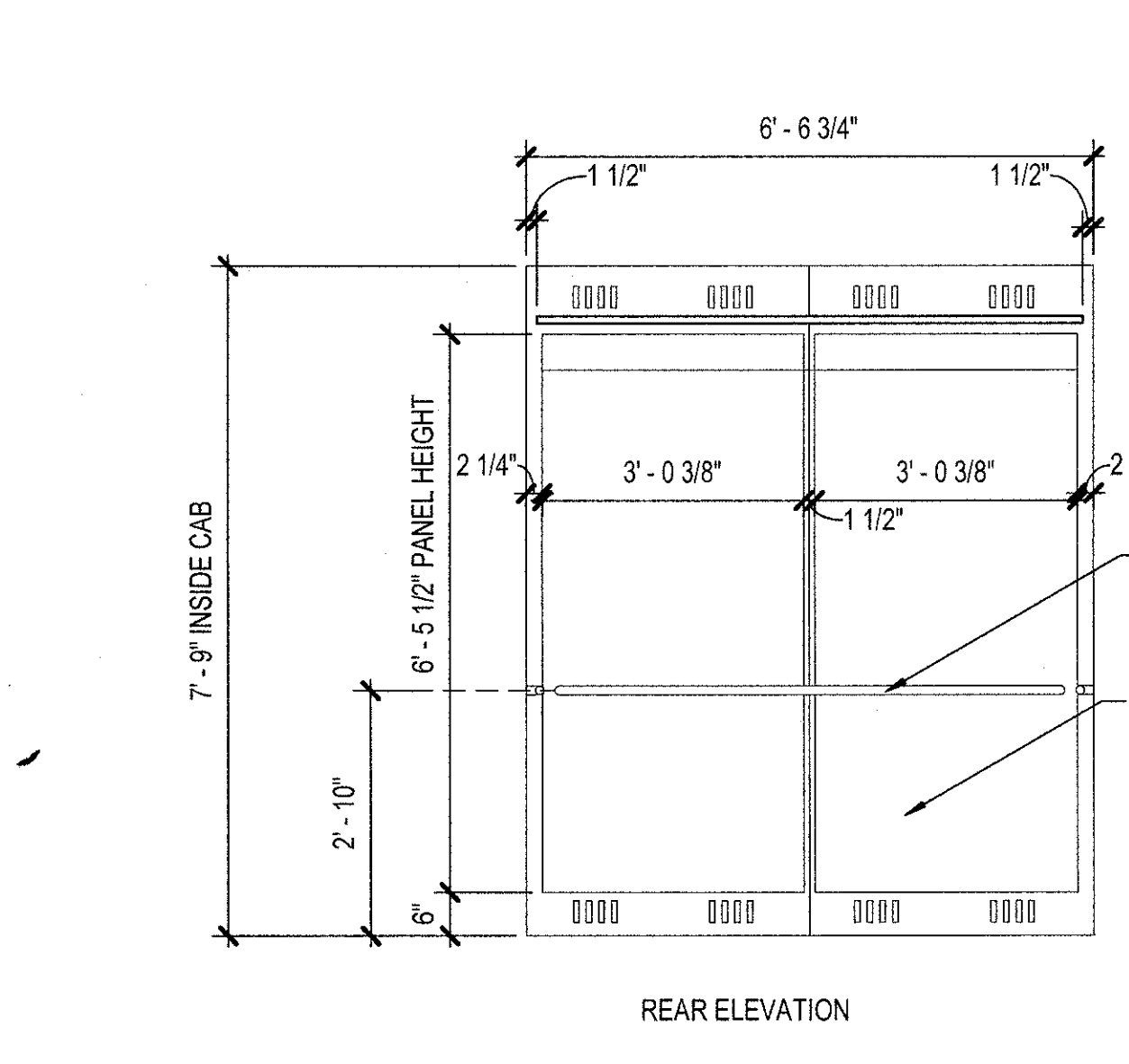
C1 ELEVATOR DOOR HEAD DETAIL
 3\"/>



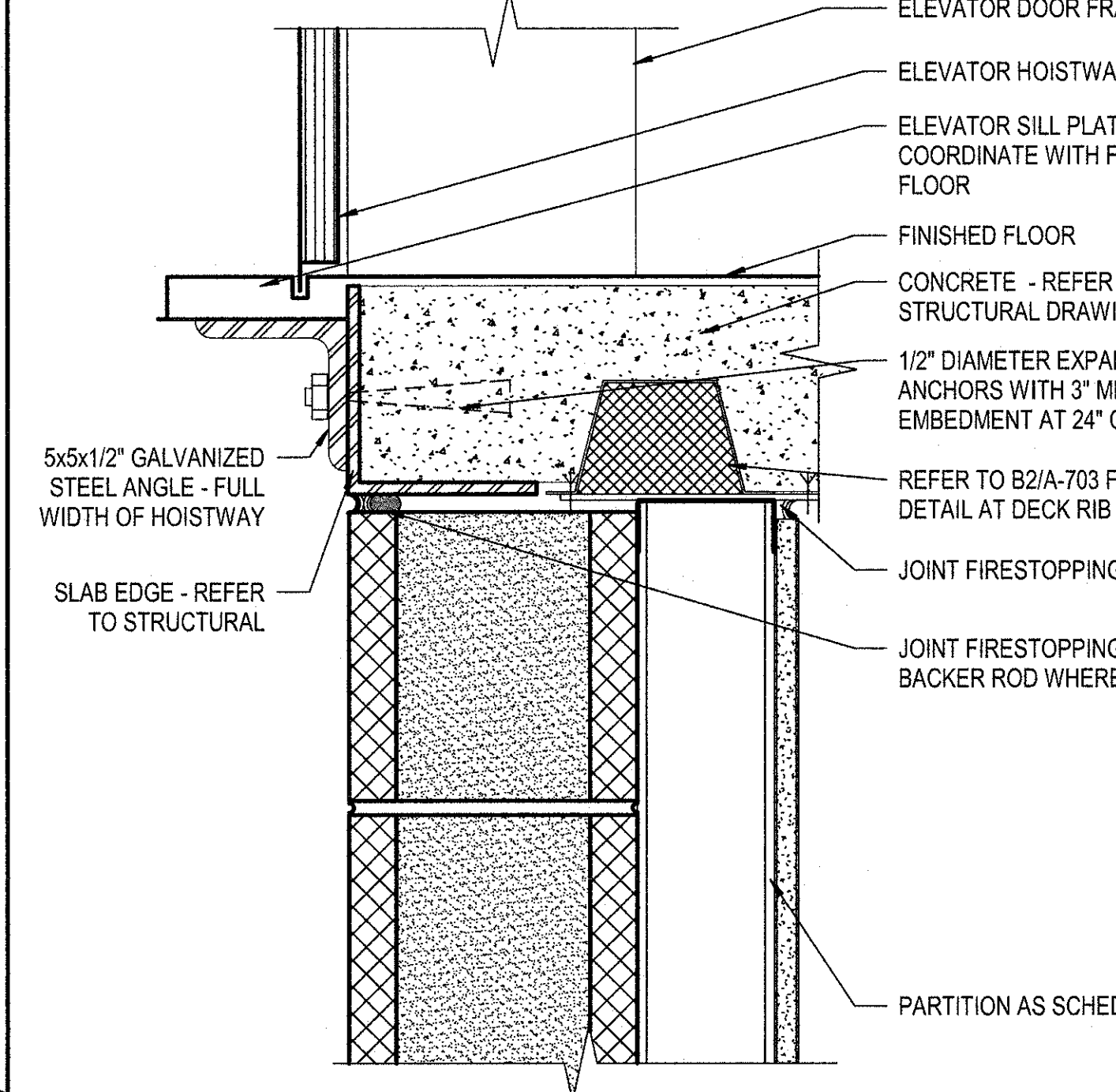
C2 ELEVATOR ENTRANCE CONTROLS
 NOT TO SCALE
 A-556



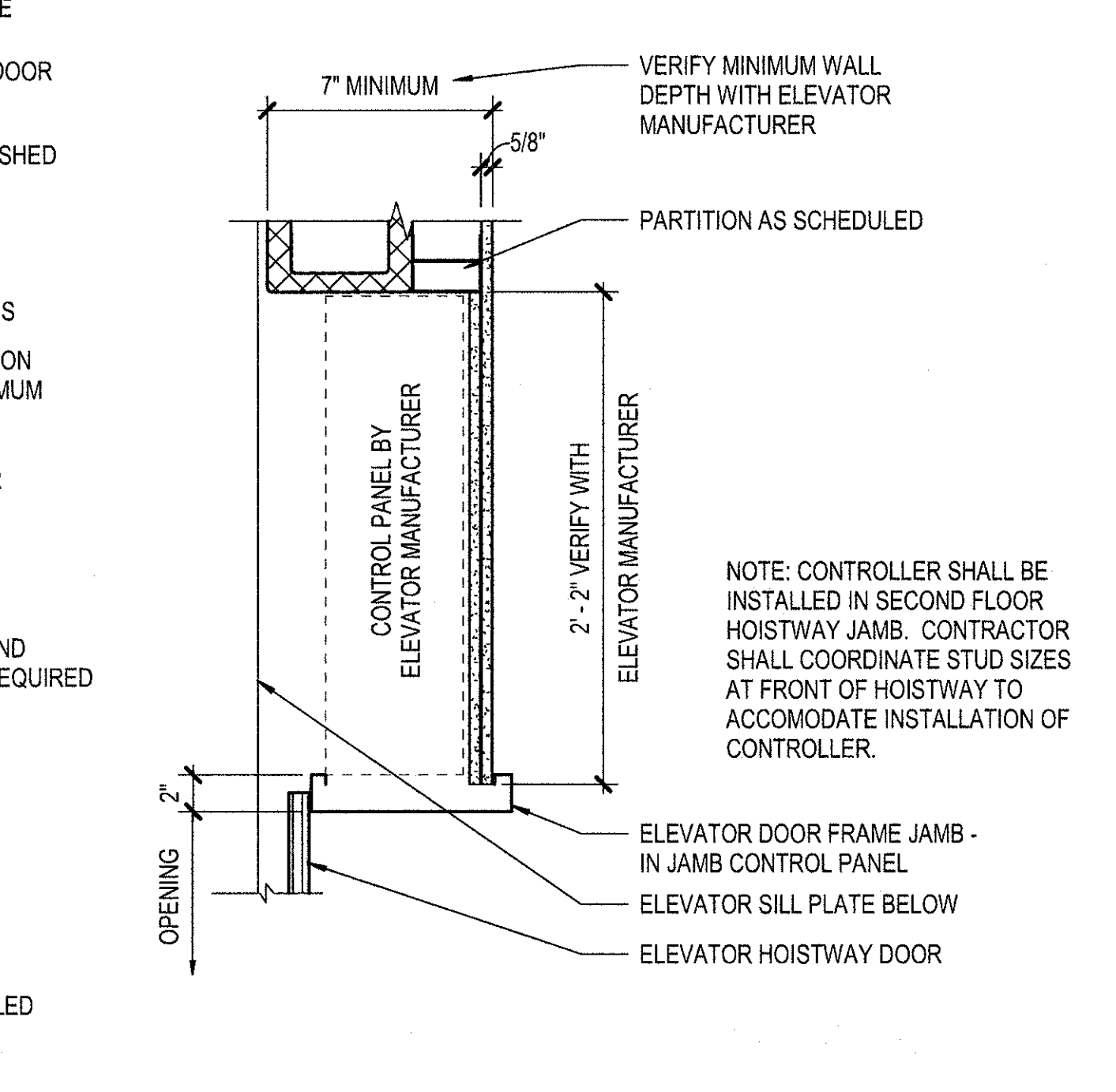
C3 LADDER SECTION AT ELEVATOR PIT
 1 1/2\"/>



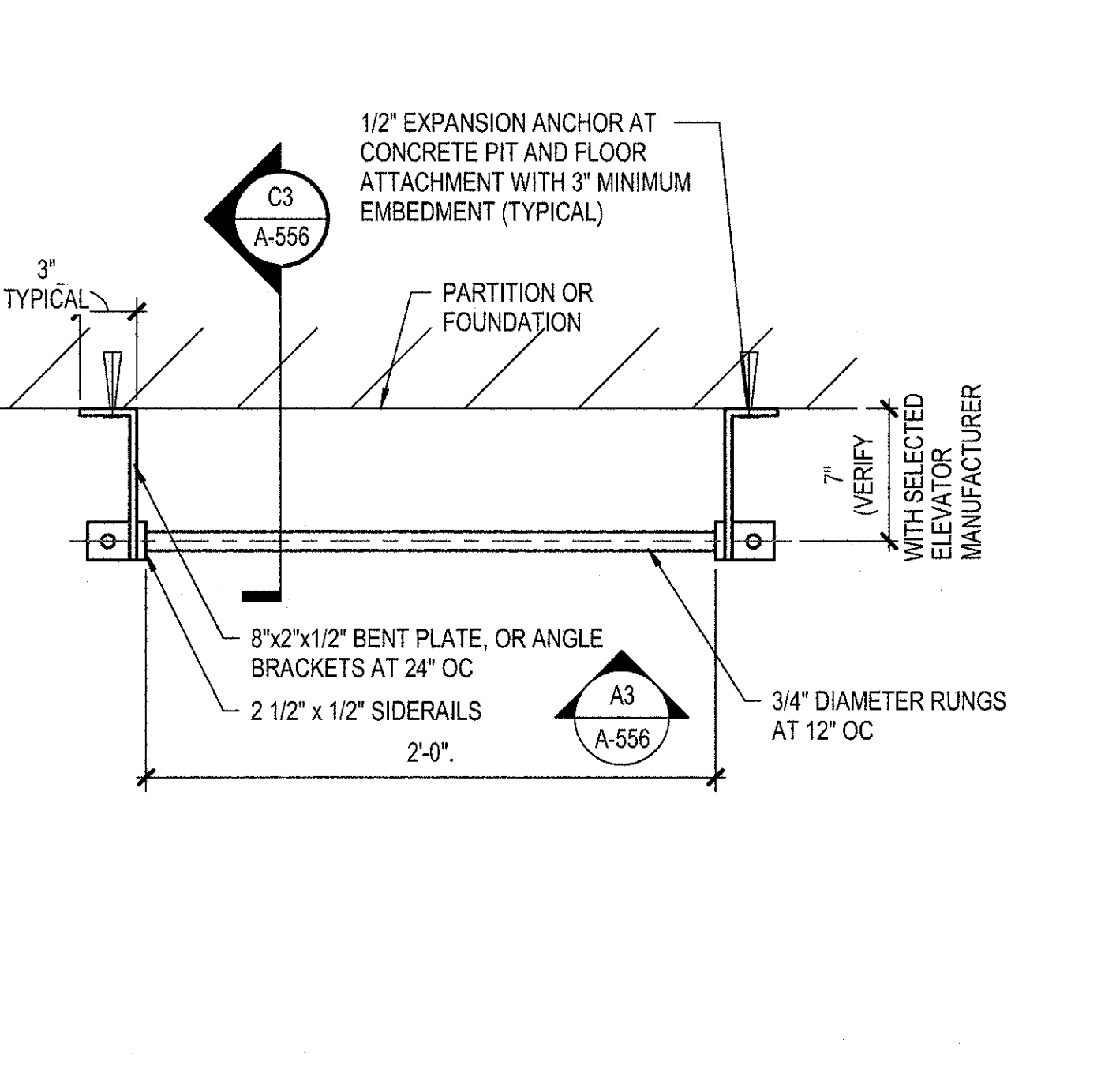
C4 ELEVATOR ELEVATIONS
 1/2\"/>



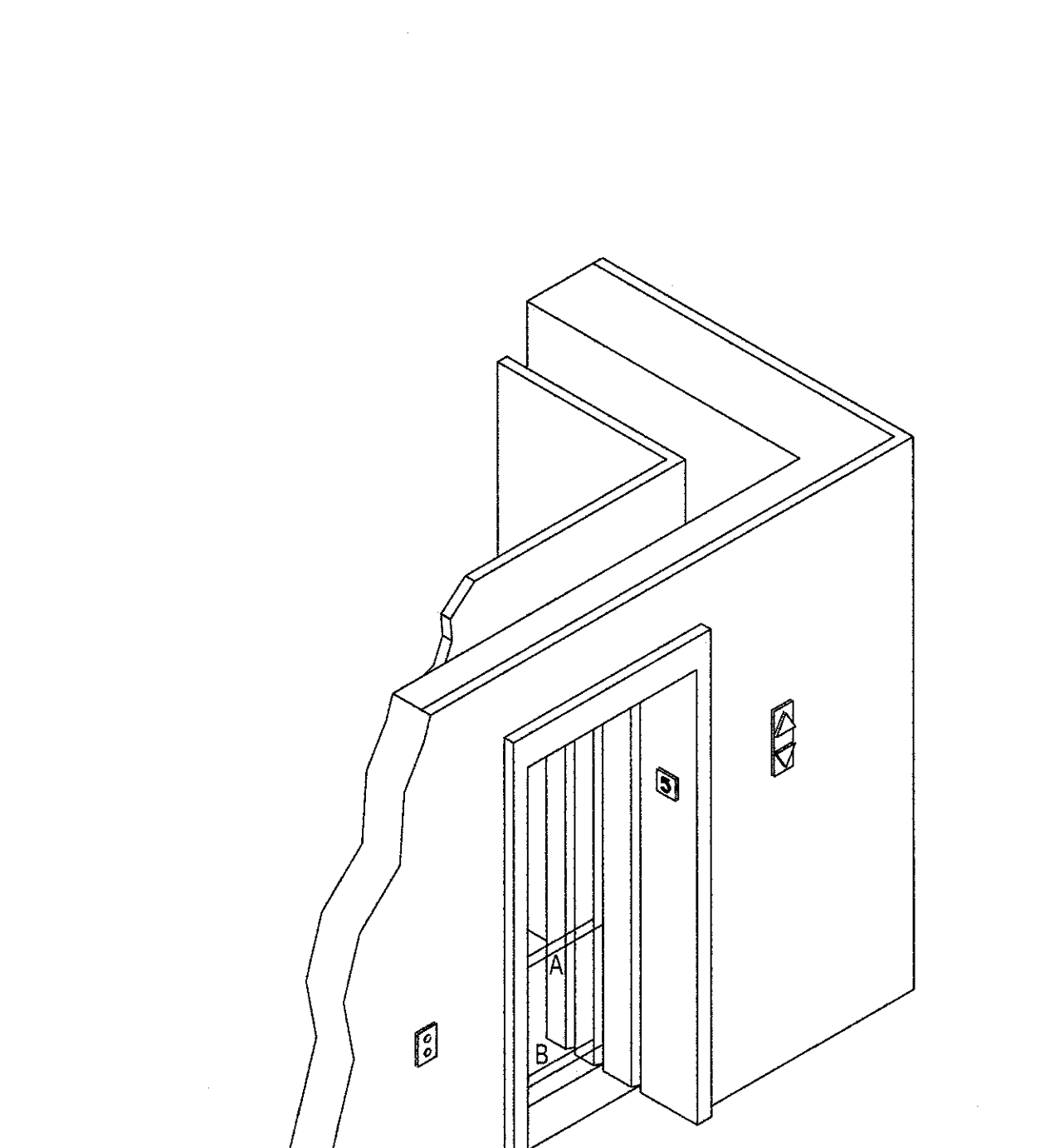
B1 ELEVATOR DOOR SILL DETAIL (SECOND FLOOR)
 3\"/>



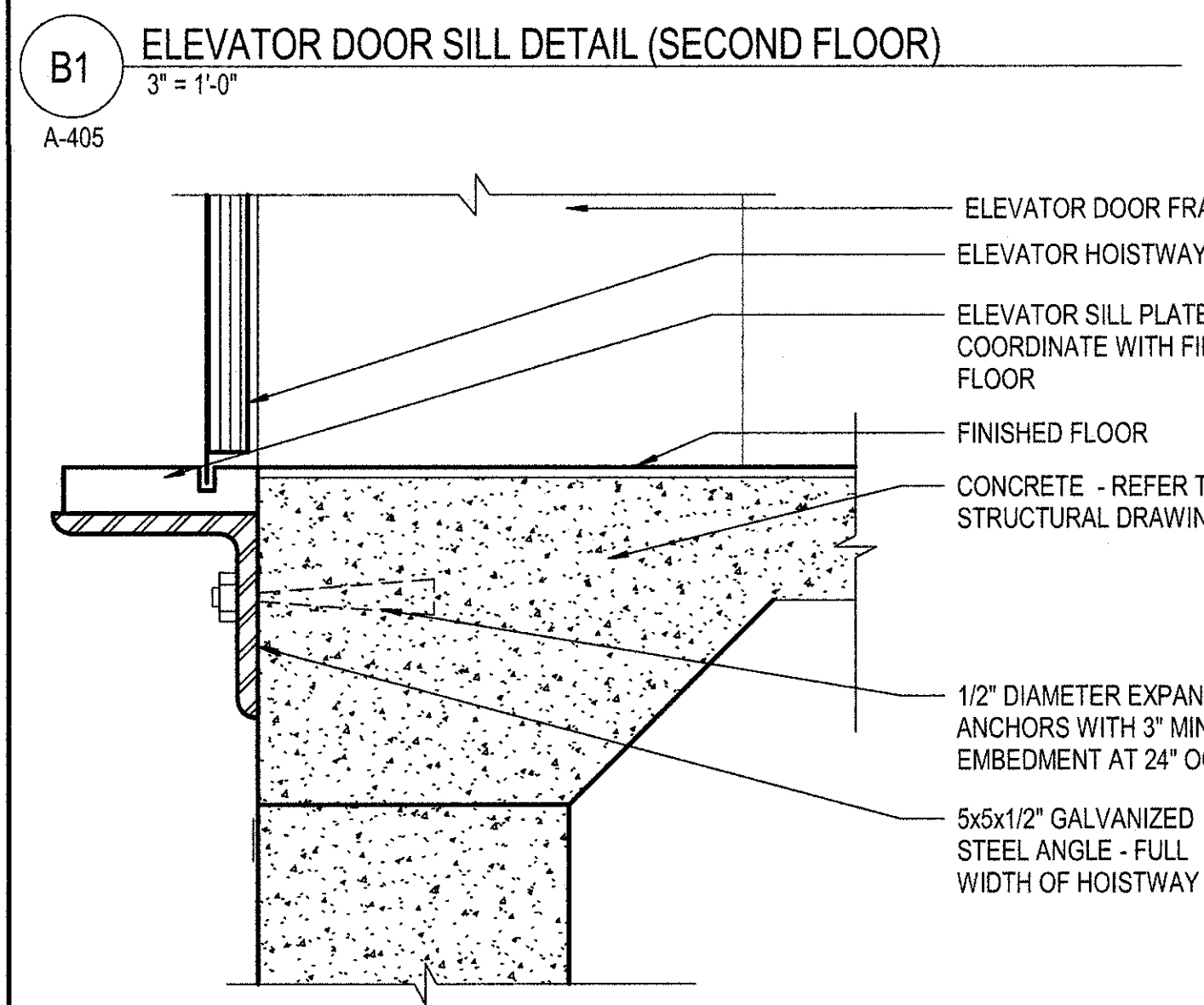
B2 ELEVATOR DOOR JAMB DETAIL
 1 1/2\"/>



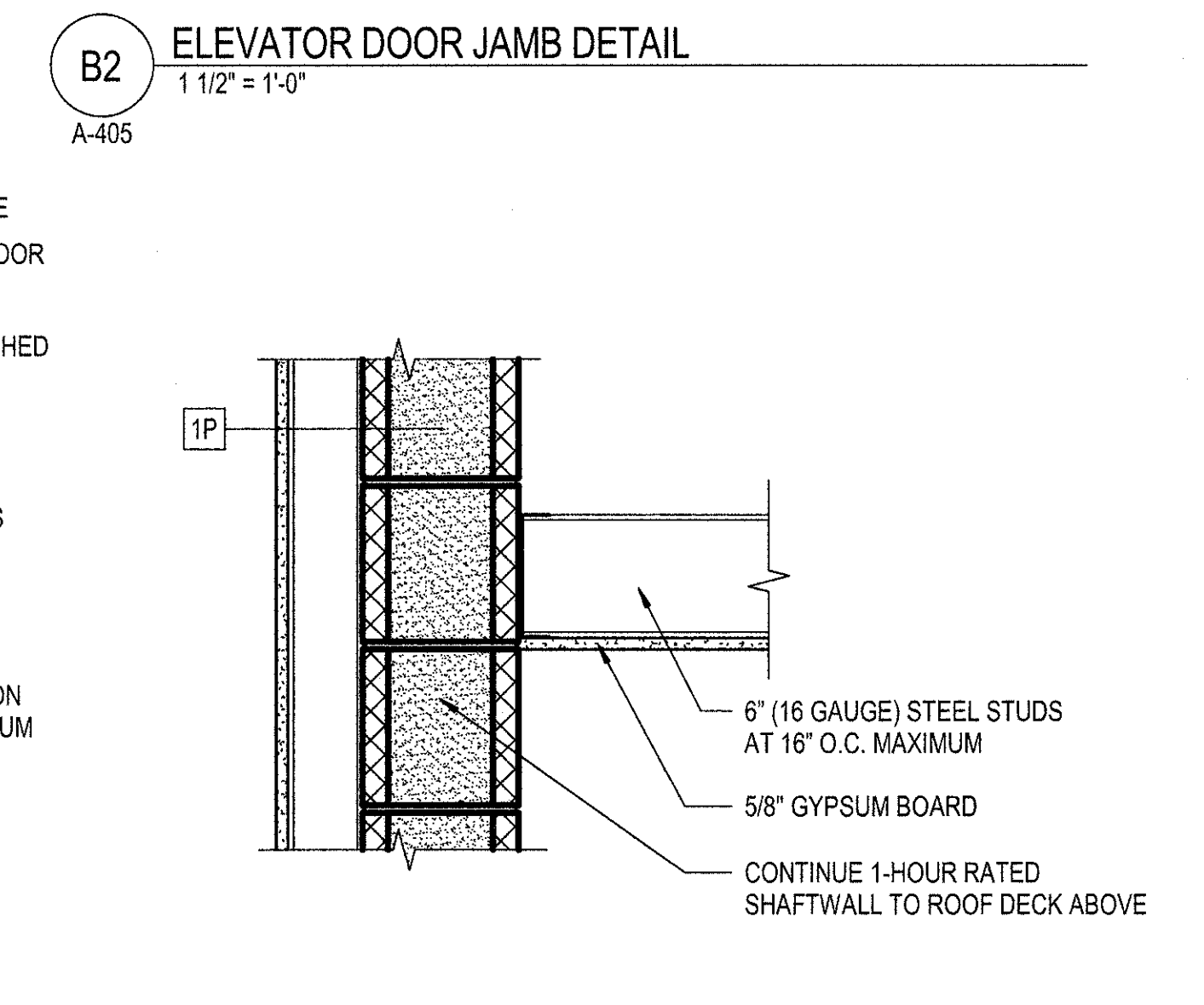
B3 LADDER DETAIL AT ELEVATOR PIT
 1 1/2\"/>



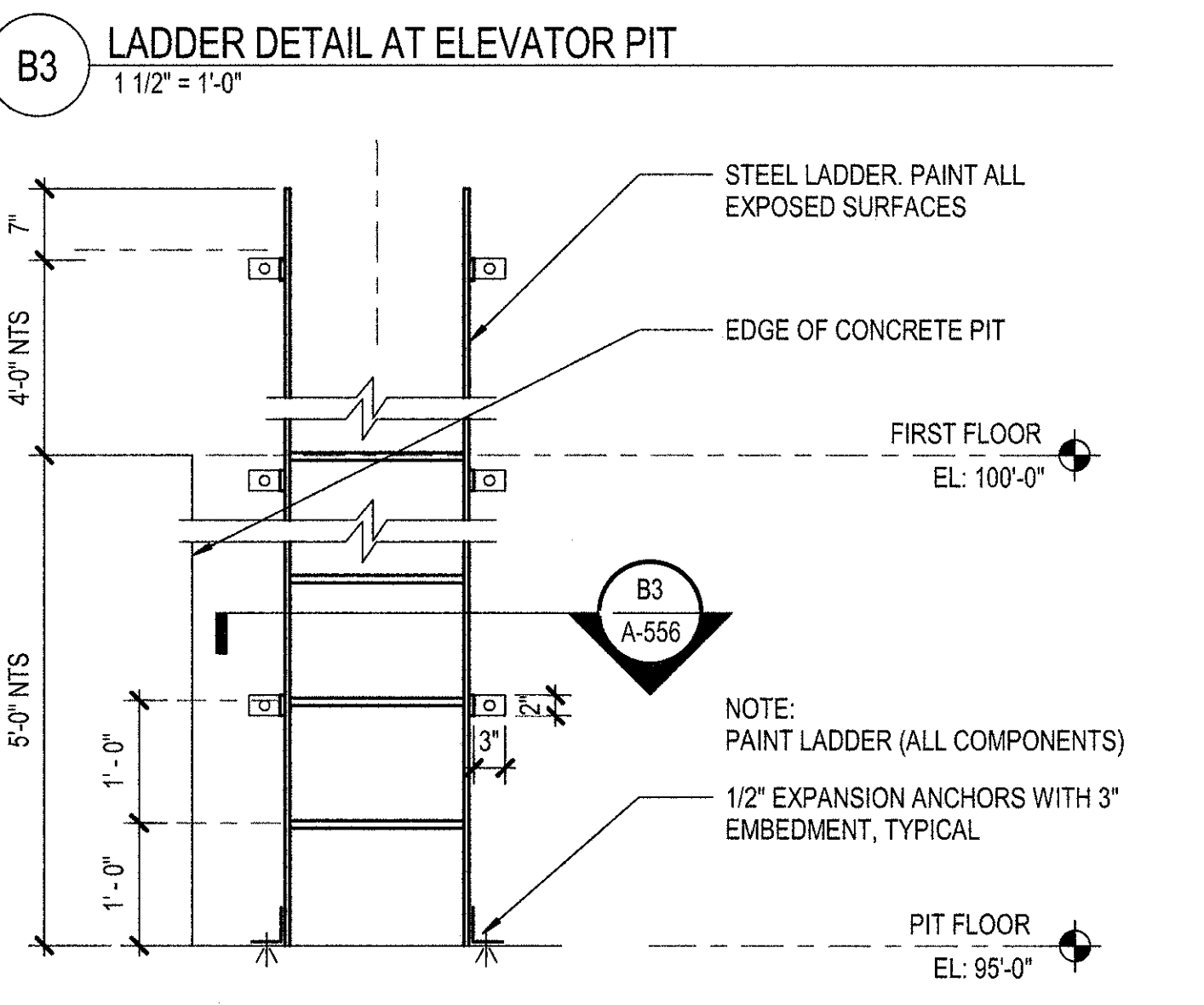
A4 ELEVATOR ACCESSIBILITY GUIDE
 NOT TO SCALE
 A-556



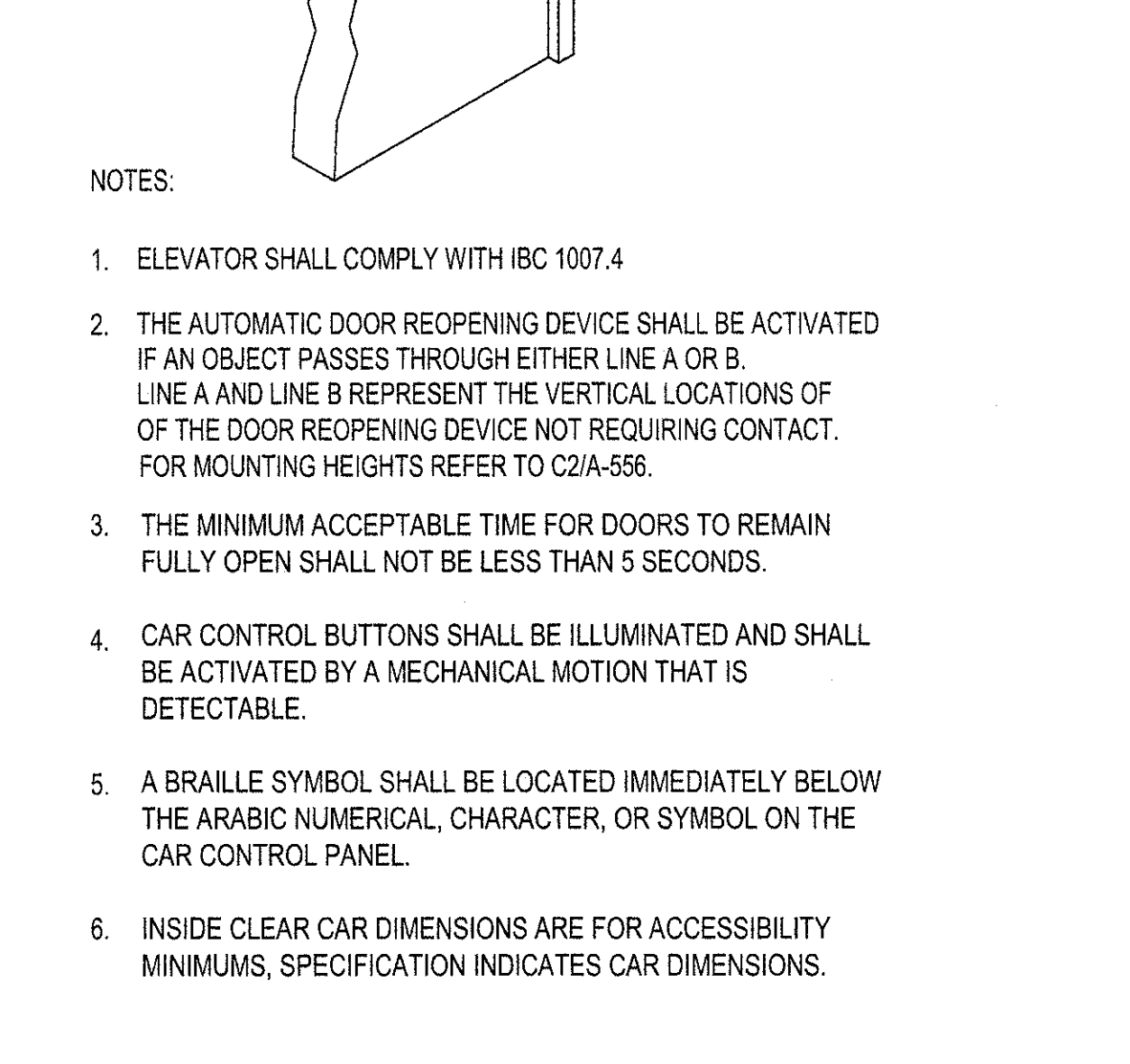
A1 ELEVATOR DOOR SILL DETAIL (FIRST FLOOR)
 3\"/>



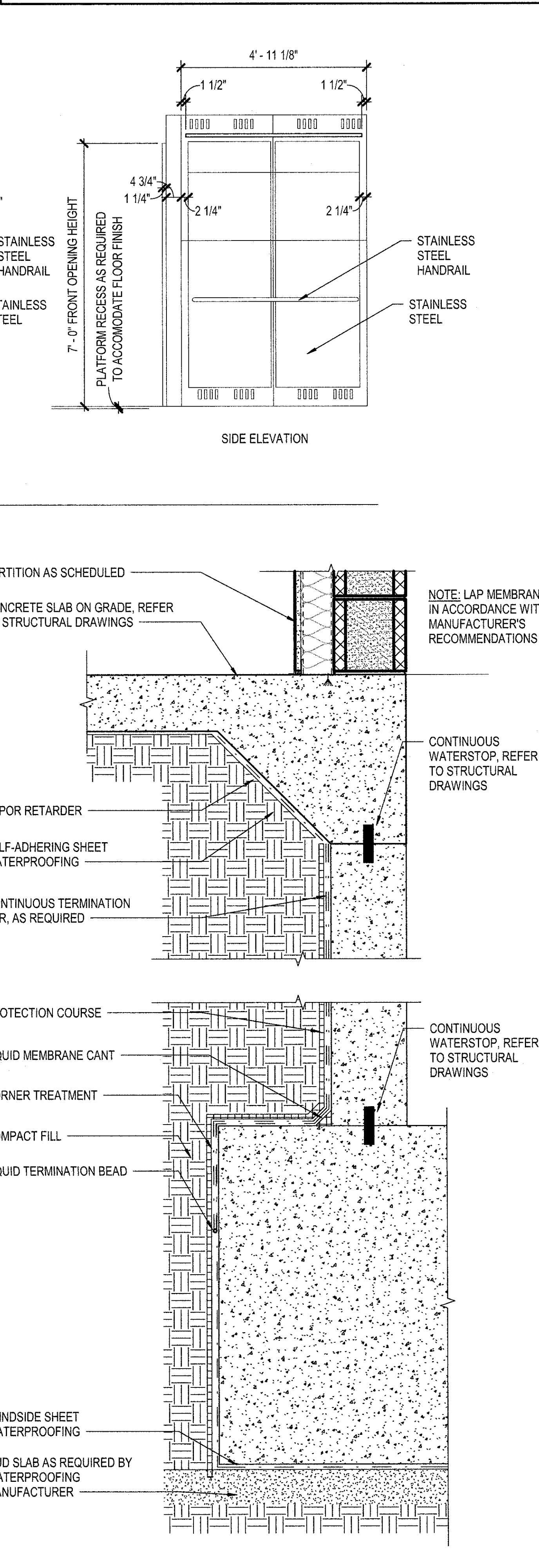
A2 ELEVATOR CEILING DETAIL
 1 1/2\"/>



A3 LADDER AT ELEVATOR PIT ELEVATION
 NOT TO SCALE
 A-556

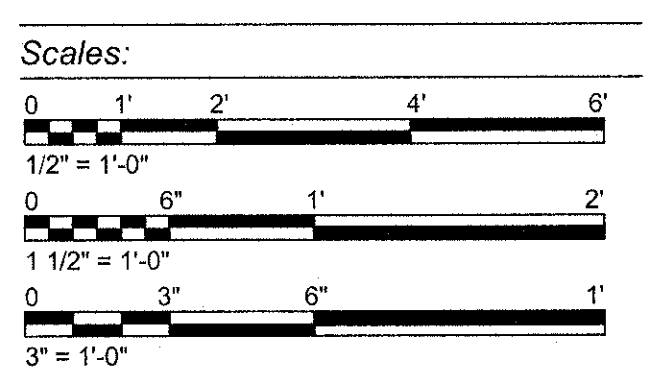


A5 ELEVATOR WALL TO SLAB DETAIL
 1 1/2\"/>



A5 ELEVATOR WALL TO SLAB DETAIL
 1 1/2\"/>

- NOTES:
- ELEVATOR SHALL COMPLY WITH IBC 1007.4
 - THE AUTOMATIC DOOR REOPENING DEVICE SHALL BE ACTIVATED IF AN OBJECT PASSES THROUGH EITHER LINE A OR B. LINE A AND LINE B REPRESENT THE VERTICAL LOCATIONS OF OF THE DOOR REOPENING DEVICE NOT REQUIRING CONTACT. FOR MOUNTING HEIGHTS REFER TO C2/A-556.
 - THE MINIMUM ACCEPTABLE TIME FOR DOORS TO REMAIN FULLY OPEN SHALL NOT BE LESS THAN 5 SECONDS.
 - CAR CONTROL BUTTONS SHALL BE ILLUMINATED AND SHALL BE ACTIVATED BY A MECHANICAL MOTION THAT IS DETECTABLE.
 - A BRAILLE SYMBOL SHALL BE LOCATED IMMEDIATELY BELOW THE ARABIC NUMERICAL, CHARACTER, OR SYMBOL ON THE CAR CONTROL PANEL.
 - INSIDE CLEAR CAR DIMENSIONS ARE FOR ACCESSIBILITY MINIMUMS. SPECIFICATION INDICATES CAR DIMENSIONS.



Project No.: T1808-01
 Drawing Title: ARCHITECTURAL INTERIOR DETAILS
 Date: 29 JUNE 2018
 Designed: AT
 Drawn: NF
 Checked: RY
 Drawing No.: A-556
 164 of 322

JACOBS PROJECT NO. F3W91001
 BIM 360://sF3W91000-TASMG-ARCH/NOARNG TASMG-ARCH-V17.rvt
 7/30/2018 12:05:47 PM