

A1 PARTIAL SECOND FLOOR PLAN - AREA B
1/8" = 1'-0"

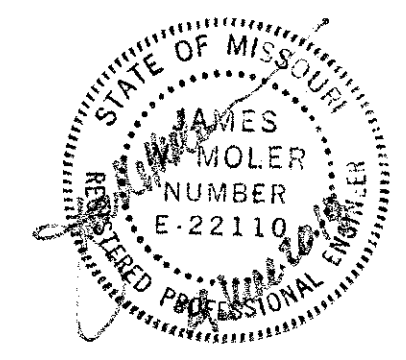
GENERAL NOTES

1. REFER TO DRAWING M-001 AND M-002 FOR SYMBOLS, ABBREVIATIONS, AND GENERAL NOTES.

KEYED NOTES

- ① LOCATE DUCTWORK ABOVE EQUIPMENT STORAGE TOWER.
- ② PROVIDE A SECONDARY DRAIN PAN WITH EMERGENCY DRAIN RUNNING TO NEAREST FLOOR DRAIN.

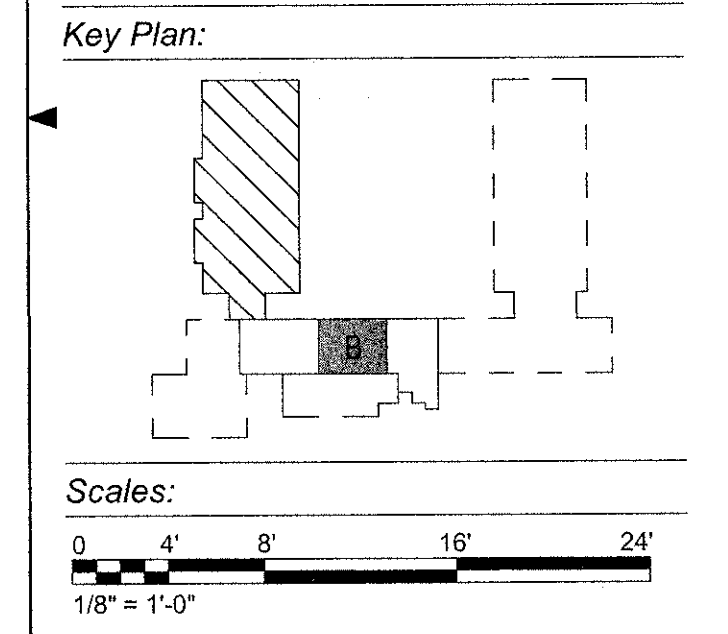
JACOBS
501 North Broadway, Saint Louis, Missouri 63102
TEL: 314.335.4000
JACOBS ENGINEERING GROUP, INC.
Missouri State Certificate of Authority #000704
Consultant - Civil
MILLENNIA PROFESSIONAL SERVICES OF ILLINOIS, LTD.
11 Executive Drive, Suite 12
Fairview Heights, Illinois, 62208
Tel: 618-624-5610
Missouri State Certificate of Authority #2012009247



James W. Moler, PE
Mechanical
MO# E-22110

REV	DESCRIPTION	DATE

AVCRAD PHASE 3A ADDITION
 1107th THEATER AVIATION SUSTAINMENT MAINTENANCE GROUP
 MISSOURI ARMY NATIONAL GUARD
 GREENE COUNTY
 SPRINGFIELD, MISSOURI
 CONTRACT NO. T1808-01
 NATIONAL GUARD BUREAU
 NGB PROJECT NO. 290109



Project No.: T1808-01
Drawing Title:
**MECHANICAL
PARTIAL SECOND FLOOR
DUCTWORK PLAN
AREA B**
Date: 29 JUNE 2018
Designed: JC
Drawn: KP
Checked: TN
Drawing No.:
MH107
242 of 322

JACOBS PROJECT NO. F3W91001
 7/30/2018 11:50:08 AM BIM 360://US-F3W91000-TASMG-ARCH/IMCARNG TASMG-MECH-V17.rvt