

**MISSOURI SOYBEAN INNOVATION CENTER
NEW OFFICE BUILDING**
734 S. Country Club Drive
Jefferson City, Missouri

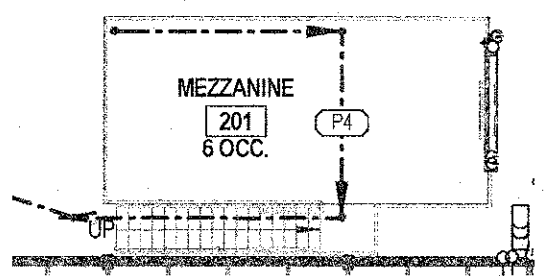
GENERAL INFORMATION

BUILDING AUTHORITY: CITY OF JEFFERSON (Jefferson City, Missouri)
BUILDING CODE/ REGULATIONS: 2015 International Building Code (IBC)
2015 International Mechanical Code (IMC)
2015 Uniform Plumbing Code (UPC)
2014 National Electric Code (NEC), NFPA 70
2015 International Fire Code (IFC), NFPA 72
2015 International Fuel Gas Code w/ City Amendments
American w/ Disabilities Act Accessibility Guidelines
OCCUPANCY USE GROUP: SINGLE OCCUPANCY NON SEPERATED USE GROUPS
B (BUSINESS), ACESSORY S-1 (STORAGE)
CONSTRUCTION TYPE: II-B (NONCOMBUSTIBLE -UNPROTECTED)
FIRE SUPPRESSION SYSTEM: SPRINKLERED

CHAPTER 5: GENERAL BUILDING HEIGHTS AND AREAS

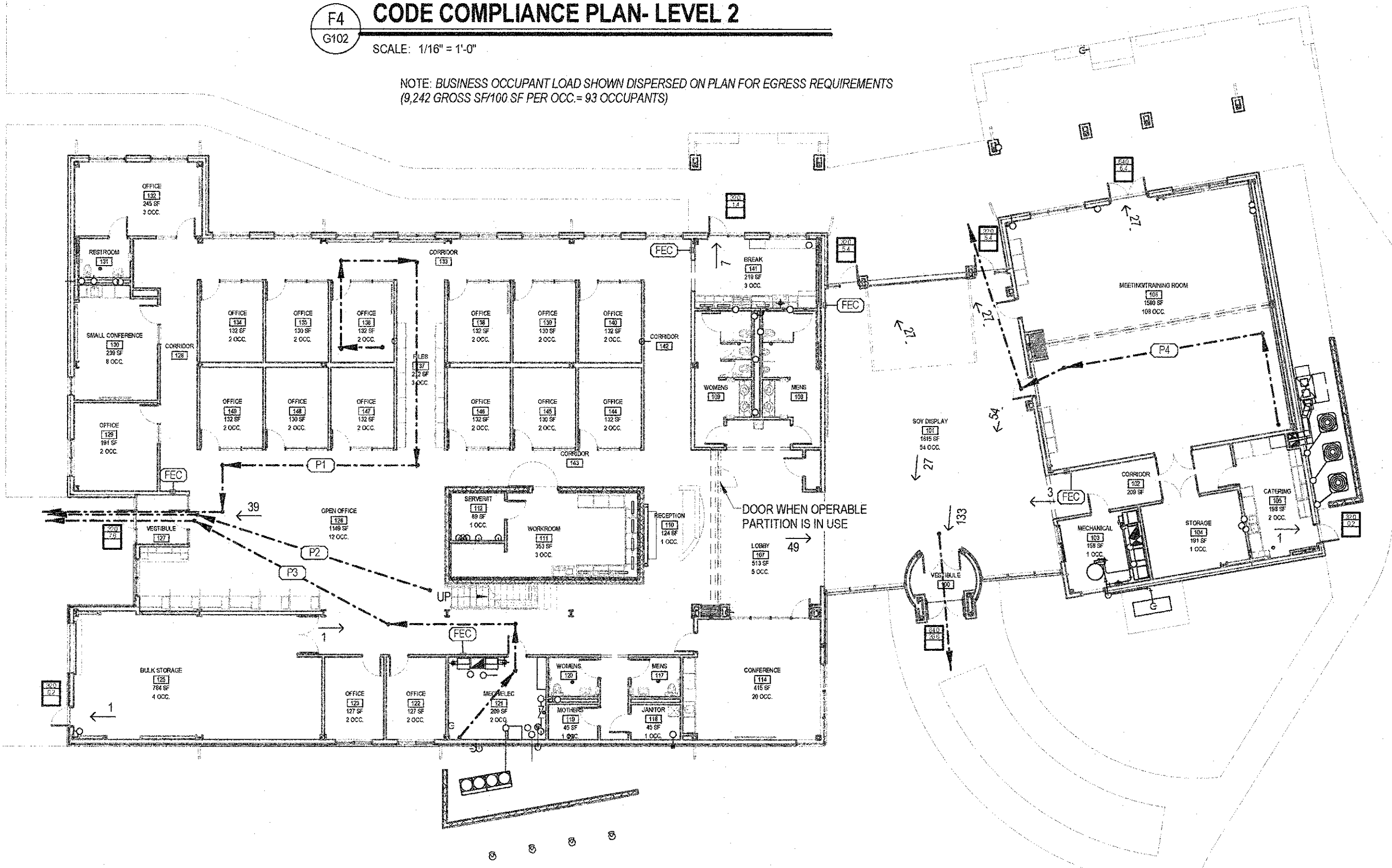
NEW BUILDING: PROPOSED HEIGHT AND AREA
GRADE PLANE (SECTION 502.1)
AVERAGE GRADE LEVEL ALONG EXTERIOR WALLS OF BUILDING.....ELEV. 100'-0"
FLOOR ELEVATIONS
MAIN FLOOR ELEVATION.....ELEV. 100'-0"
MEZZANINE FLOOR ELEVATION.....ELEV. 110'-5"
FLOOR AREA
TOTAL GROSS FLOOR AREA - MAIN FLOOR.....14,615 s.f.
TOTAL GROSS FLOOR AREA - MEZZANINE.....515 s.f.
(CONSIDERED PORTION OF MAIN STORY BELOW).
TOTAL GROSS FLOOR AREA.....14,615 s.f.

ALLOWABLE HEIGHT LIMITATIONS (SECTION 503)
ALLOWABLE BUILDING HEIGHT (TABLE 504.3 AND 504.4)
At = OCCUPANCY B Primary/ IIB (type) ALLOWABLE HEIGHT ABOVE GRADE PLANE.....4 STORIES @ 75'-0"
TOTAL ACTUAL BUILDING HEIGHT (GRADE PLANE TO HEIGHT OF ROOF).....1 STORY @ 24'-10"
505.2 MEZZANINES SHALL BE CONSIDERED A PORTION OF THE STORY BELOW. SUCH MEZZANINES SHALL NOT CONTRIBUTE TO EITHER BUILDING AREA OR NUMBER OF STORIES REGULATED BY SECTION 503.1.



F4 G102 CODE COMPLIANCE PLAN- LEVEL 2
SCALE: 1/16" = 1'-0"

NOTE: BUSINESS OCCUPANT LOAD SHOWN DISPERSED ON PLAN FOR EGRESS REQUIREMENTS (9,242 GROSS SF/100 SF PER OCC. = 93 OCCUPANTS)



K2 G102 CODE COMPLIANCE PLAN- LEVEL 1
SCALE: 1/16" = 1'-0"
True North, Project North

MIXED USE AND OCCUPANCY (SECTION 508)
ACCESSORY OCCUPANCIES (SECTION 508.2)
ALLOWABLE HEIGHT AND AREA BAED OFF MAIN OCCUPANCY. ACCESSORY OCCUPANCIES SHALL NOT OCCUPY MORE THAN 10% OF THE FLOOR AREA IN WHICH THEY ARE LOCATED. NO SEPERATION IS REQUIRED BETWEEN THE ACCESSORY OCCUPANCY AND THE MAIN OCCUPANCY.
CHAPTER 6: TYPES OF CONSTRUCTION
IIB CONSTRUCTION TYPE (SECTION TABLE 601 & 602)
STRUCTURAL FRAME (INCLUDING COLUMNS, GIRDERS, AND TRUSSES).....0 HOUR
EXTERIOR BEARING WALLS.....0 HOUR
INTERIOR BEARING WALLS.....0 HOUR
EXTERIOR NON BEARING WALLS (TABLE 602)
X < 5 FEET.....1 HOUR
5 FEET ≤ X < 10 FEET.....1 HOUR
10 ≤ X < 30 FEET.....0 HOUR
X ≥ 30 FEET.....0 HOUR
INTERIOR NON-BEARING WALLS AND PARTITIONS.....0 HOUR
FLOOR CONSTRUCTION (INCLUDING SUPPORTING BEAMS AND JOISTS).....0 HOUR
ROOF CONSTRUCTION (INCLUDING SUPPORTING BEAMS AND JOISTS).....0 HOUR

CHAPTER 7: FIRE-RESISTANT MATERIALS & CONSTRUCTION
FIRE BARRIERS (SECTION 707.708)
SHAFT ENCLOSURES - 3 STORIES OR LESS (SECTIONS 707.3.1 & 7013.4).....1 HOUR
EXIT ENCLOSURES - 3 STORIES OR LESS (SECTIONS 707.3.3 & 1022.1).....1 HOUR
HORIZONTAL EXITS (SECTIONS 707.5 & 1028.1).....2 HOUR
ENCLOSURE UNDER STAIRWAY (SECTIONS 707.3.1 & 1009.5.3).....1 HOUR
INCIDENTAL USE AREAS (SECTION 707.3.7 & TABLE 509).....NA
SINGLE-OCCUPANCY FIRE AREAS (SECTION 707.3.9 & TABLE 707.3.9).....NA
FIRE PARTITIONS (SECTION 708)
CORRIDOR FIRE-RESISTANCE RATING (SECTION 708.1 & TABLE 1018.1)
B (use), GREATER THAN 30 OCCUPANTS, SPRINKLERED.....0 HOUR

CHAPTER 8: INTERIOR FINISHES
INTERIOR WALL AND CEILING FINISH REQUIREMENTS BY OCCUPANCY (TABLE 803.5)
GROUP B
INTERIOR EXIT STAIRWAYS, RAMPS AND PASSAGEWAYS, SPRINKLERED.....CLASS B
CORRIDORS, SPRINKLERED.....CLASS C
ROOMS AND ENCLOSED SPACES, SPRINKLERED.....CLASS C

CHAPTER 9: FIRE PROTECTION SYSTEMS
PORTABLE FIRE EXTINGUISHERS (SECTION 906)
(Group B); CLASS "A" FIRE - LIGHT HAZARD, MINIMUM UL RATED 2-A:10-B:C
PROVIDE 1 UNIT / 3000 S.F.....5 EXTINGUISHERS
MAXIMUM TRAVEL DISTANCE.....75 FEET

FIRE ALARM AND DETECTION SYSTEMS (SECTION 907)
GROUPS B (SECTION 907.2.2)
B (use) - NO FEWER THAN ONE MANUAL FIRE ALARM BOX SHALL BE PROVIDED IN AN APPROVED LOCATION.
SMOKE AND HEAT VENTS (SECTION 910)
SMOKE AND HEAT VENTS.....NOT REQUIRED

CHAPTER 10: MEANS OF EGRESS
OCCUPANT LOAD (SECTION 1004)
TABLE 1004.1.2 SQUARE FOOT PER OCCUPANT REQUIREMENTS
ACCESSORY, STORAGE, MECH, ELECTRICAL ROOMS.....300 GROSS
ASSEMBLY UNCONCENTRATED SEATS.....15 NET
BUSINESS.....100 GROSS
ASSEMBLY EXHIBIT GALLERY AND MUSEUM.....30 NET
KITCHEN.....200 GROSS
SEE G102 FOR OCCUPANTS BASED ON SQUARE FOOTAGE OF SPACES.

BUILDING FLOOR AREA:
ASSEMBLY AREA: 53,308 SQ. FT. / 15 SQ. FT.....3,481 OCCUPANTS
EXHIBIT AREA: 1,615 SQ. FT. / 30 SQ. FT.....54 OCCUPANTS
STORAGE: 1,341 SQ. FT. / 300 SQ. FT.....5 OCCUPANTS
BUSINESS AREA: - 9,242 SQ. FT. / 100 SQ. FT.....93 OCCUPANTS
KITCHEN AREA: 230 SQ. FT. / 200 SQ. FT.....2 OCCUPANTS
TOTAL BUILDING OCCUPANT LOAD.....262 OCCUPANTS

EGRESS WIDTH (SECTION 1005)
EXIT DOOR FOR B
CAPACITY OF DOOR (TABLE 1005.3.2)
EGRESS WIDTH / OCCUPANT, SPRINKLERED.....0.2 INCHES / OCCUPANT
CLEAR OPENING PER DOOR WIDTH.....34" CLEAR WIDTH / DOOR
CLEAR OPENING PER DOOR WIDTH.....68" CLEAR WIDTH / DOOR
CAPACITY OF EXIT DOOR = 34" CLEAR WIDTH / 0.2".....170 OCCUPANTS / DOOR
CAPACITY OF EXIT DOOR = 68" CLEAR WIDTH / 0.2".....340 OCCUPANTS / DOOR
NUMBER OF EGRESS DOORS.....8 EGRESS DOORS
OCCUPANT CAPACITY OF DOORS:
6 (egress door) x 170 (occupants / door).....1,020 OCCUPANTS
2 (egress door) x 340 (occupants / door).....680 OCCUPANTS
TOTAL: 1,700 OCCUPANTS

STAIR WIDTH
CAPACITY OF STAIR (TABLE 1005.1)
EGRESS WIDTH / OCCUPANT, SPRINKLERED.....0.3 INCHES / OCCUPANT
OCCUPANTS SERVED BY STAIRS.....6 OCCUPANTS
REQUIRED STAIR WIDTH:
6 OCCUPANTS x 0.3 INCHES =9" STAIR WIDTH
STAIRWAY CLEAR WIDTH, SPRINKLERED.....42 INCHES PROVIDED

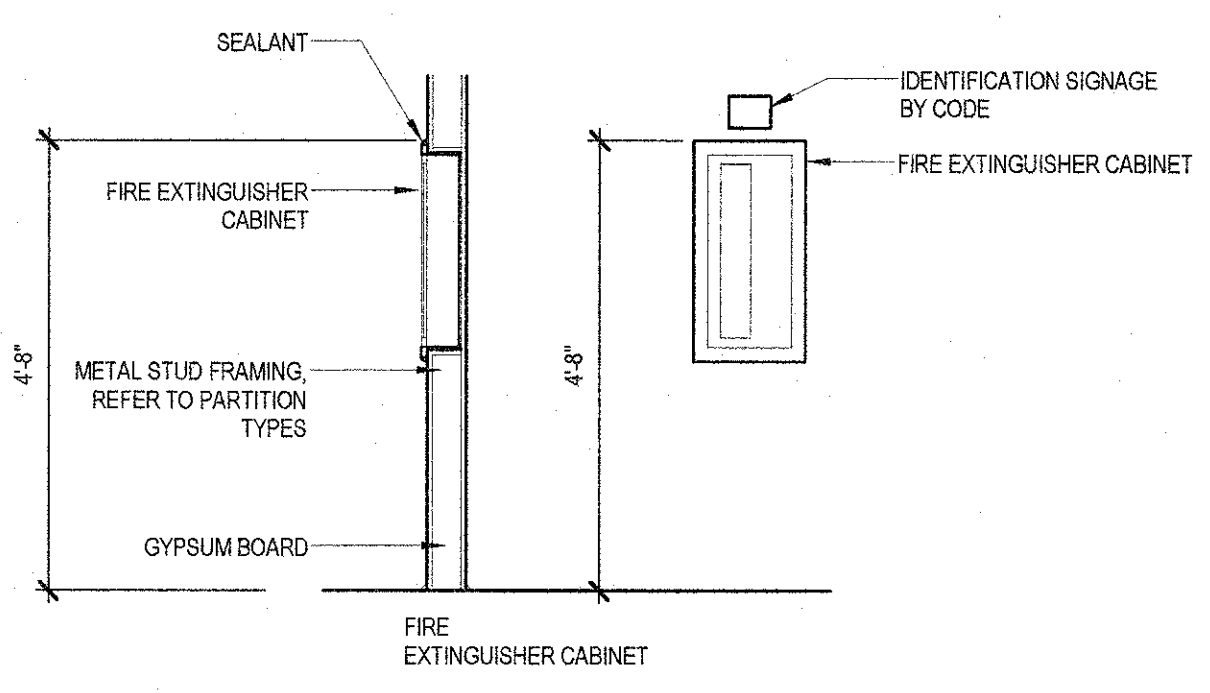
EXIT AND EXIT ACCESS DOORWAYS (SECTION 1015)

BUILDING EGRESS DOORS

Number	Egress Building	Width Egress Provided
100	Yes	64.0
101B	Yes	32.0
101C	Yes	32.0
105B	Yes	32.0
106D	Yes	64.0
125B	Yes	32.0
127	Yes	32.0
141	Yes	32.0

TRAVEL DISTANCE PATHS

PATH	LENGTH
P1	134'-7"
P2	85'-7"
P3	101'-6"
P4	141'-1"



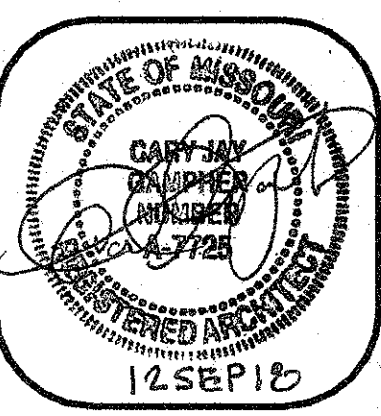
K15 G102 FEC CABINET
SCALE: 1/2" = 1'-0"

CODE COMPLIANCE PLAN GENERAL NOTES:

1. WALL RATINGS BELOW REFLECT REQUIRED MINIMUM RATINGS FOR WALLS. REFER TO UL ASSEMBLY FOR ACTUAL WALL CONSTRUCTION.
2. REFER TO FLOOR PLANS FOR PARTITION INFORMATION.
3. REFER TO FLOOR PLANS FOR DOOR TAGS, REFER TO A501 FOR DOOR SCHEDULE AND DOOR INFORMATION.

- EXISTING PARTITION TO REMAIN
- PARTITION
- SMOKE PARTITION
- 1 HR BARRIER
- 1 HR / SMOKE BARRIER
- 2 HR BARRIER
- 2 HR / SMOKE BARRIER
- 3 HR BARRIER
- 3 HR / SMOKE BARRIER

- PROVIDED EGRESS WIDTH
- REQUIRED EGRESS WIDTH
- DOOR RATING (TAG USED ON NON-EGRESS DOORS)
- EXIT TRAVEL DISTANCE PATH NUMBER. REFER TO SCHEDULE FOR DISTANCE
- FIRE EXTINGUISHER ON WALL HOOKS
- FIRE EXTINGUISHER IN SEMI-RECESSED CABINET



CENTRAL MISSOURI PROFESSIONAL SERVICES, INC.
CIVIL ENGINEER
MISSOURI STATE CERTIFICATE OF AUTHORITY # 001658
SSC ENGINEERING, INC.
MECHANICAL/ELECTRICAL/PLUMBING ENGINEER
MISSOURI STATE CERTIFICATE OF AUTHORITY # 001244
SSC ENGINEERING, INC.
MISSOURI STATE CERTIFICATE OF AUTHORITY # 001244

The Architects Alliance inc.
Missouri State Certificate of Authority # 000143
631 West Main Street
Jefferson City, Missouri
(573) 636-5000 phone

CODE INFORMATION

**MISSOURI SOYBEAN INNOVATION CENTER
NEW OFFICE BUILDING**
734 S. COUNTRY CLUB DRIVE
JEFFERSON CITY, MISSOURI

PROJECT NO. 1613
DATE: SEP. 12, 2016

G102