



1 inch = 30 FEET



( Graphic Scale - Feet )

NOTE: See Sheet C100 for Property Bearings and Distances and Zoning Boundary Lines.

JEFFERSON CITY COUNTRY CLUB  
518 SOUTH COUNTRY CLUB DRIVE  
USE: COUNTRY CLUB



Patrick P. Kremer, PE - Engineer  
MO# PE-2012018094

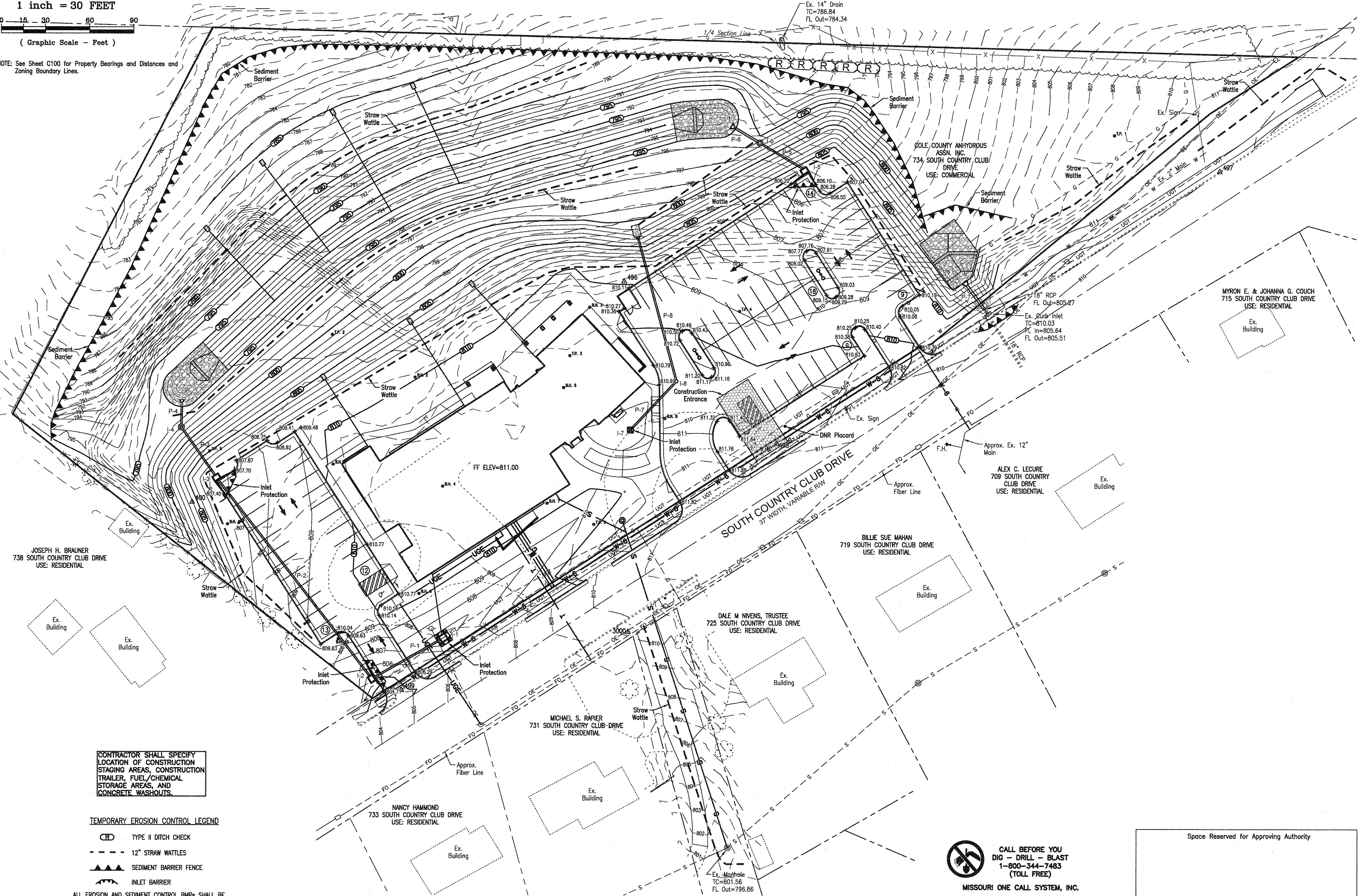
CENTRAL MISSOURI PROFESSIONAL SERVICES  
CIVIL ENGINEER & MO STATE AUTHORITY #001668  
SSC ENGINEERING, INC.  
STRUCTURAL ENGINEER, MO# 001244  
SSC ENGINEERING, INC.  
MECH / ELEC / PLUMB ENGINEERING, MO# 001244



SITE GRADING  
PLAN

MISSOURI SOYBEAN INNOVATION CENTER  
NEW OFFICE BUILDING  
734 S. COUNTRY CLUB DRIVE  
JEFFERSON CITY, MISSOURI

PROJECT NO. 1618  
DATE: 9/12/2018  
**C-102**  
SHEET 3 OF 8



CONTRACTOR SHALL SPECIFY  
LOCATION OF CONSTRUCTION  
STAGING AREAS, CONSTRUCTION  
TRAILER, FUEL/CHEMICAL  
STORAGE AREAS, AND  
CONCRETE WASHOUTS.

TEMPORARY EROSION CONTROL LEGEND

- TYPE II DITCH CHECK
- 12" STRAW WATTLES
- SEDIMENT BARRIER FENCE
- INLET BARRIER

ALL EROSION AND SEDIMENT CONTROL BMPs SHALL BE  
INSTALLED IN ACCORDANCE WITH SECTION 806 OF THE  
MISSOURI STANDARD SPECIFICATIONS FOR HIGHWAY  
CONSTRUCTION AND APMA STANDARDS PER CITY REQUIREMENTS.



CALL BEFORE YOU  
DIG - DRILL - BLAST  
1-800-344-7483  
(TOLL FREE)

MISSOURI ONE CALL SYSTEM, INC.

NOTE: The Contractor will be responsible to call the Missouri One Call  
System 1-800-344-7483 and have the underground utilities  
marked or remarked prior to any construction.

NOTE: UNDERGROUND FACILITIES, STRUCTURES AND UTILITIES, HAVE BEEN PLOTTED  
FROM AVAILABLE SURVEYS AND RECORDS, AND THEREFORE THEIR LOCATIONS  
MUST BE CONSIDERED APPROXIMATE ONLY. THERE MAY BE OTHERS, THE  
EXISTENCE OF WHICH IS PRESENTLY NOT KNOWN.

Space Reserved for Approving Authority