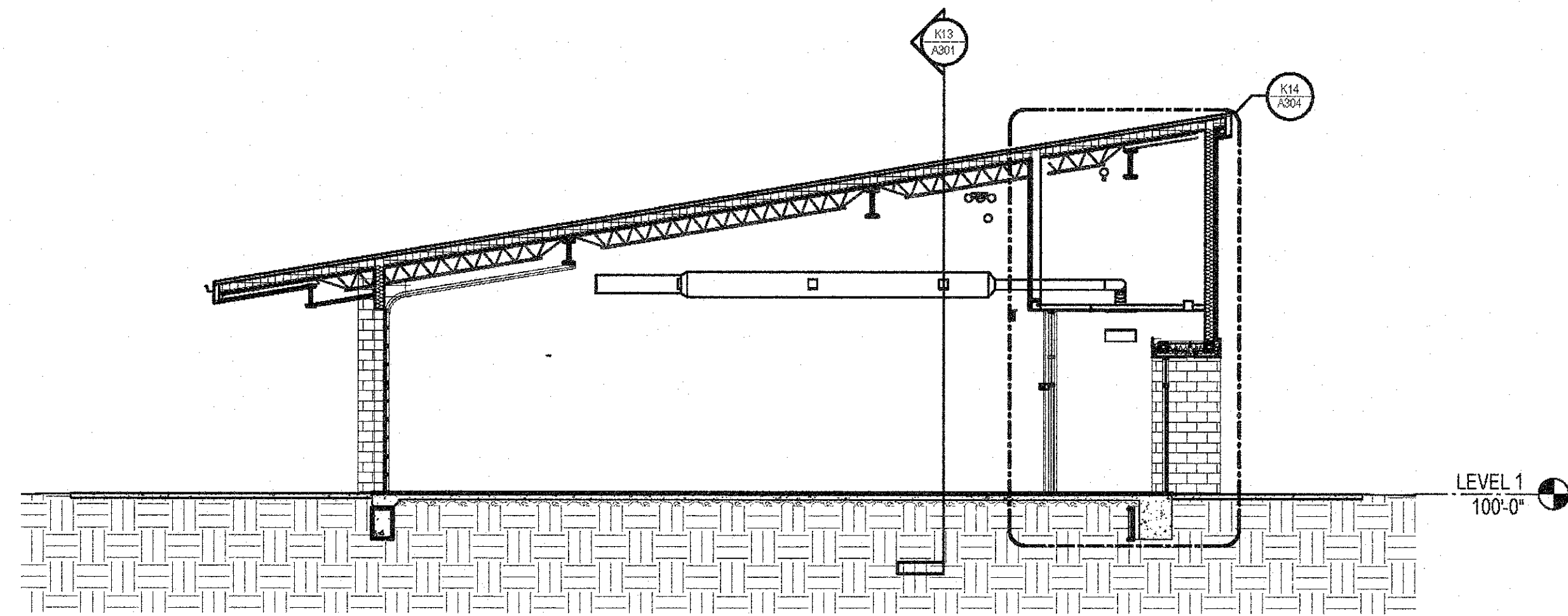
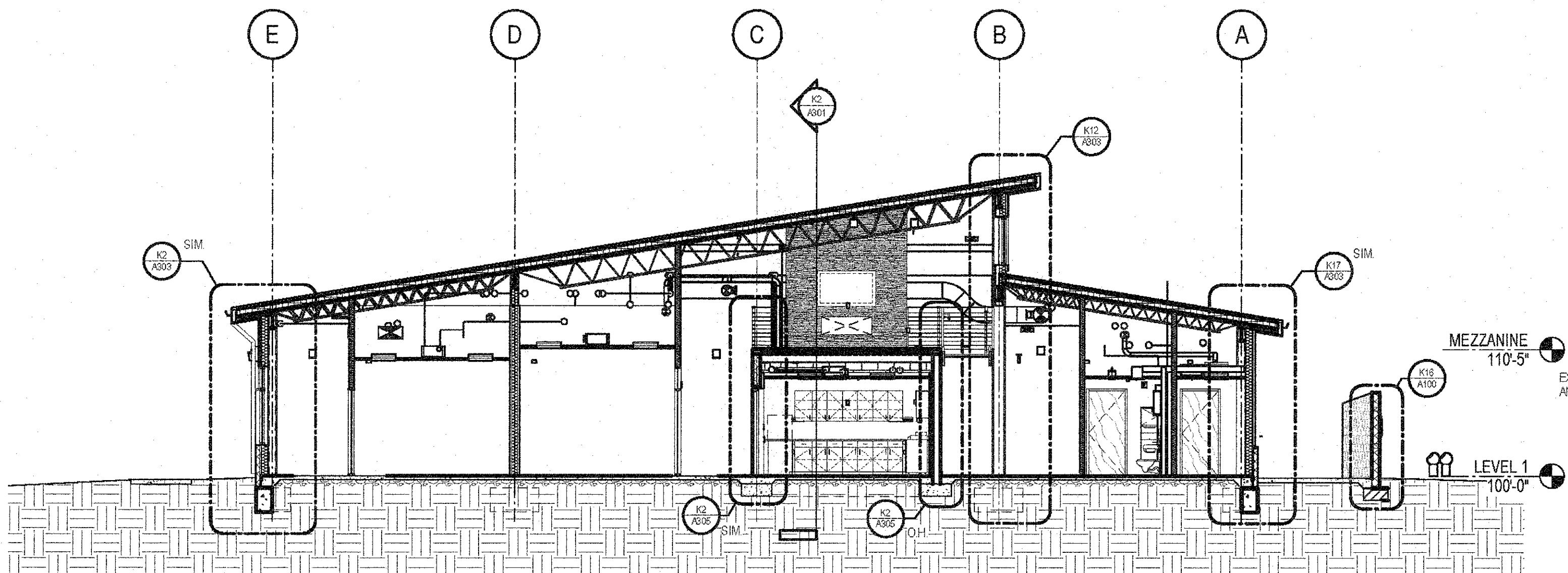


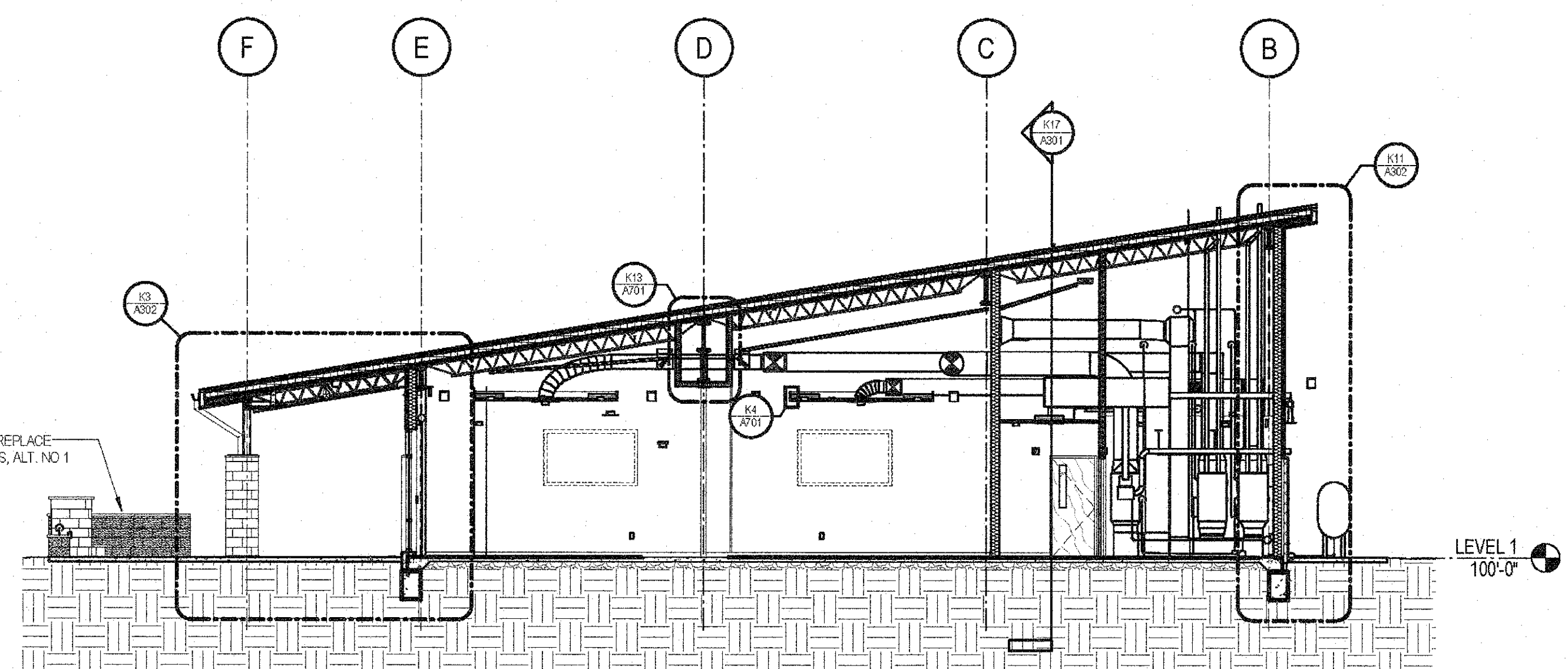
**C2 BUILDING SECTION**  
SCALE: 1/8" = 1'-0"



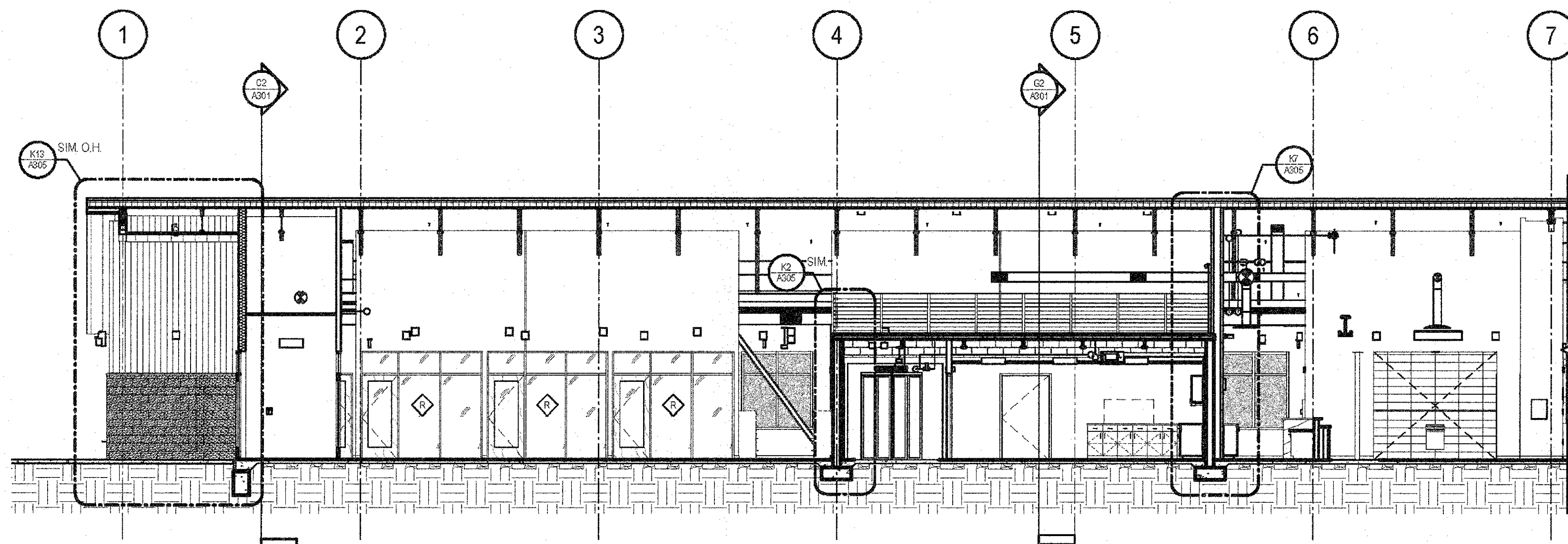
**C14 BUILDING SECTION**  
SCALE: 1/8" = 1'-0"



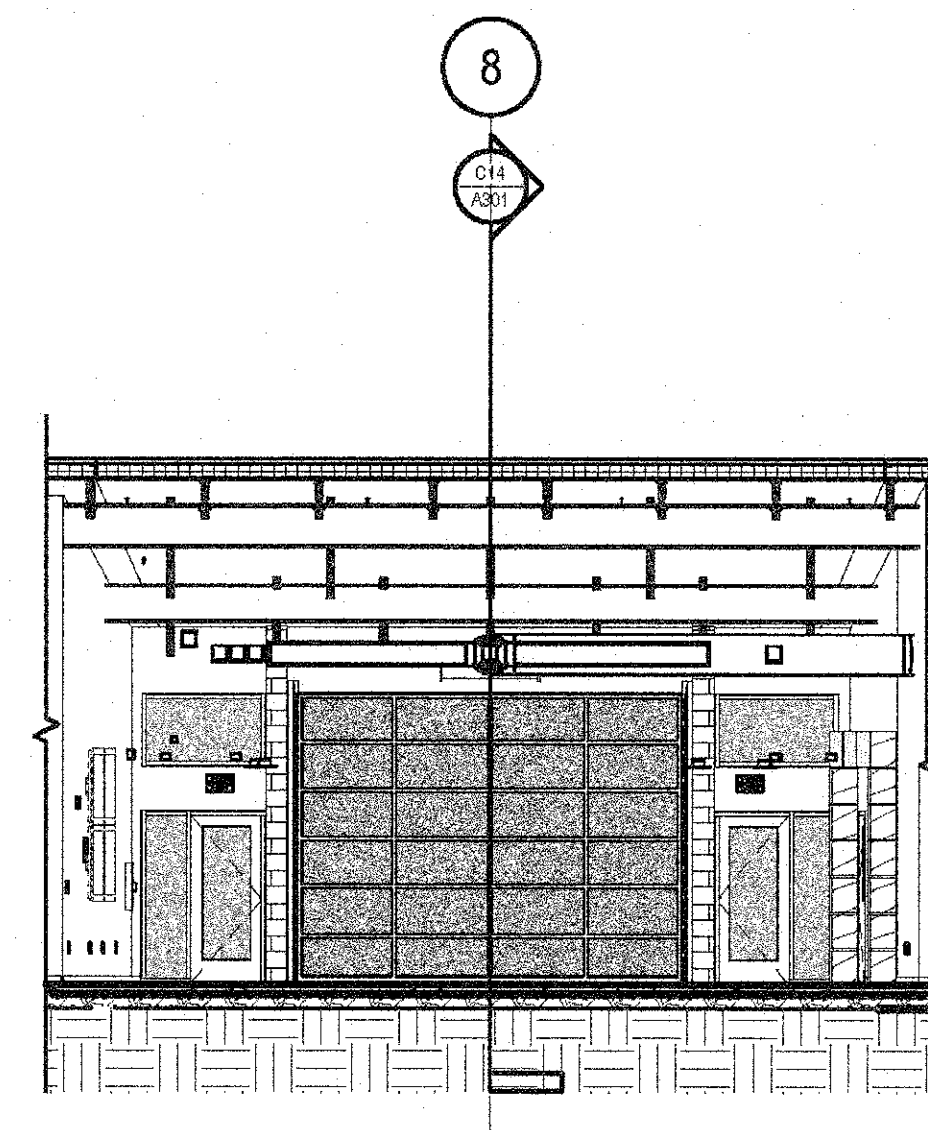
**G2 BUILDING SECTION**  
SCALE: 1/8" = 1'-0"



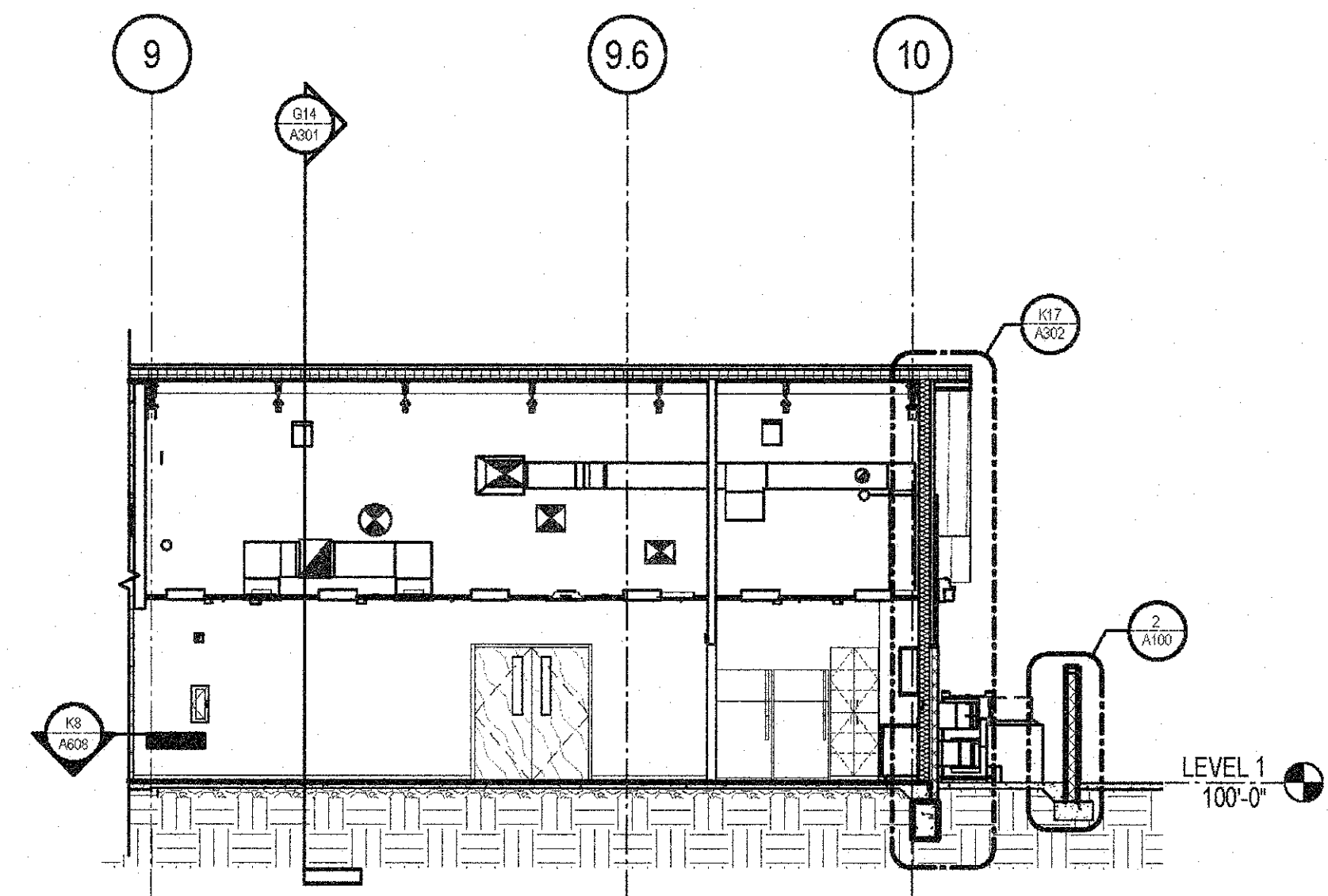
**G14 BUILDING SECTION**  
SCALE: 1/8" = 1'-0"



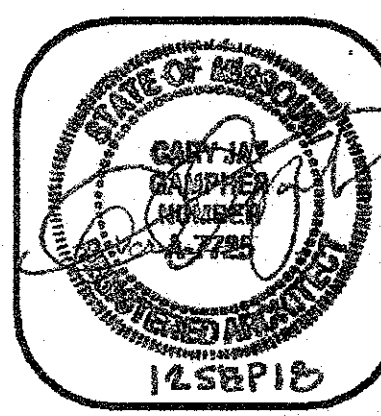
**K2 BUILDING SECTION**  
SCALE: 1/8" = 1'-0"



**K13 BUILDING SECTION**  
SCALE: 1/8" = 1'-0"



**K17 BUILDING SECTION**  
SCALE: 1/8" = 1'-0"



CENTRAL MISSOURI PROFESSIONAL SERVICES, INC.  
MISSOURI STATE CERTIFICATE OF AUTHORITY # 001558  
SSC ENGINEERING, INC.  
MECHANICAL/ELECTRICAL/PLUMBING ENGINEER  
MISSOURI STATE CERTIFICATE OF AUTHORITY # 001244  
SSC ENGINEERING, INC.  
STRUCTURAL ENGINEER  
MISSOURI STATE CERTIFICATE OF AUTHORITY # 001244

**The Architects Alliance inc.**  
Missouri State Certificate of Authority # 000143  
631 West Main Street  
Jefferson City, Missouri  
(573) 636-5000 phone

BUILDING SECTIONS

MISSOURI SOYBEAN INNOVATION CENTER  
NEW OFFICE BUILDING  
734 S. COUNTRY CLUB DRIVE  
JEFFERSON CITY, MISSOURI

PROJECT NO. 1613  
DATE: SEP. 12, 2018

**A301**