

CENTRAL MISSOURI PROFESSIONAL SERVICES, INC.
 MISSOURI STATE CERTIFICATE OF AUTHORITY # 001559
 SSC ENGINEERING, INC.
 MECHANICAL/ELECTRICAL/PLUMBING ENGINEER
 MISSOURI STATE CERTIFICATE OF AUTHORITY # 001244
 SSC ENGINEERING, INC.
 STRUCTURAL ENGINEER
 MISSOURI STATE CERTIFICATE OF AUTHORITY # 001244



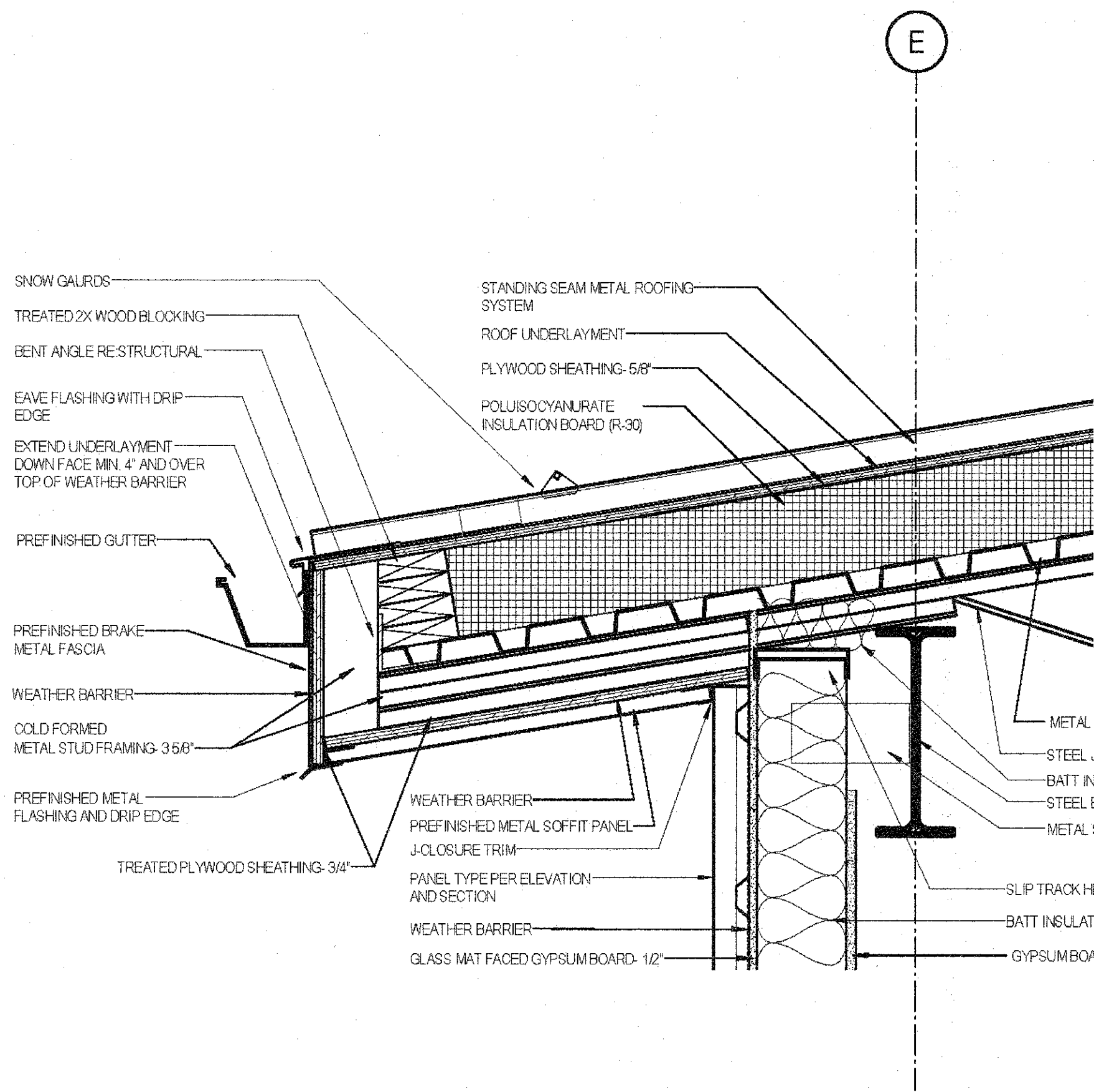
Missouri State Certificate
 of Authority # 000143
 631 West Main Street
 Jefferson City, Missouri
 (573) 638-5000 phone

SECTION DETAILS

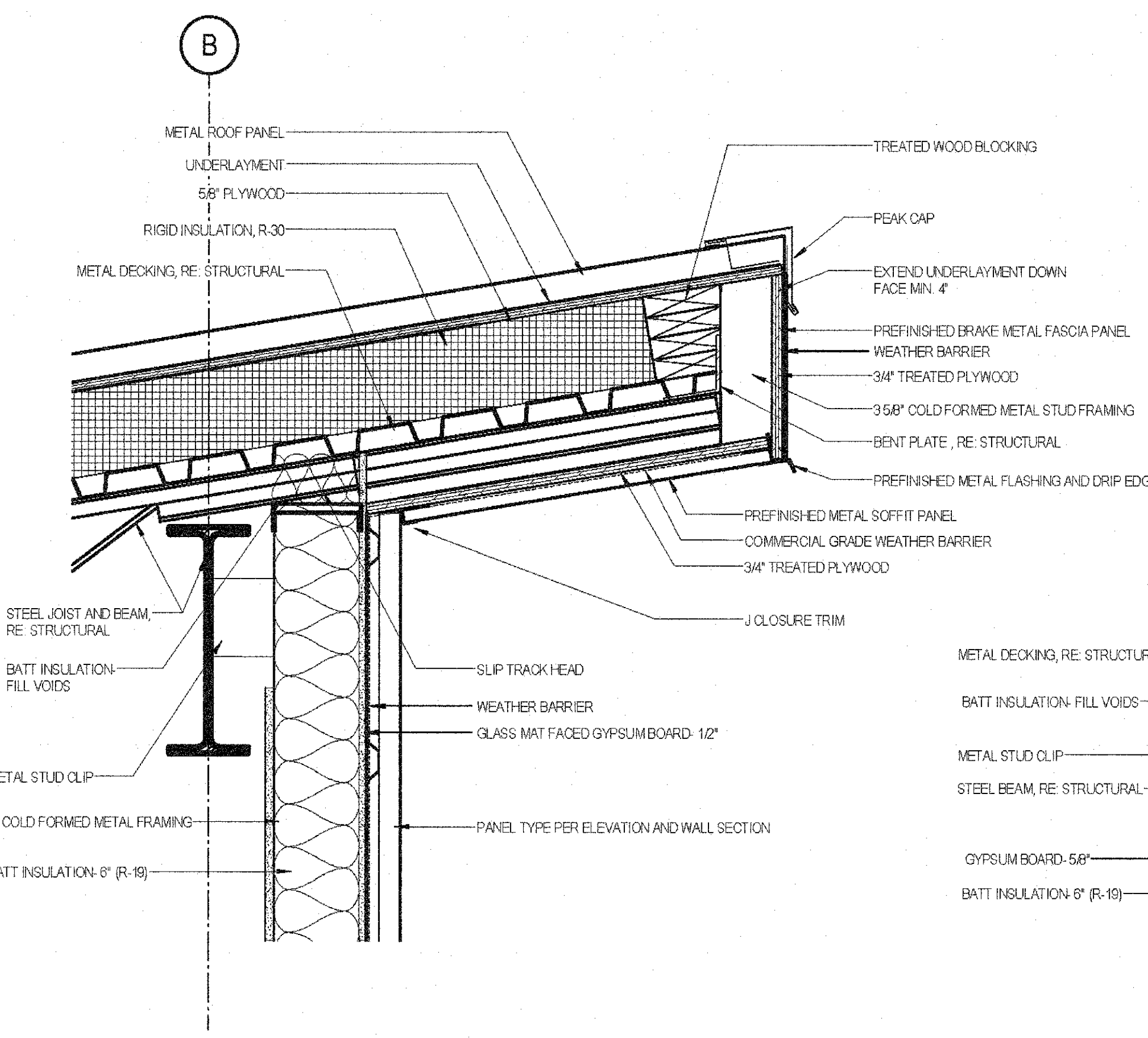
MISSOURI SOYBEAN INNOVATION CENTER
 NEW OFFICE BUILDING
 734 S. COUNTRY CLUB DRIVE
 JEFFERSON CITY, MISSOURI

PROJECT NO. 1613
 DATE: SEP. 12, 2018

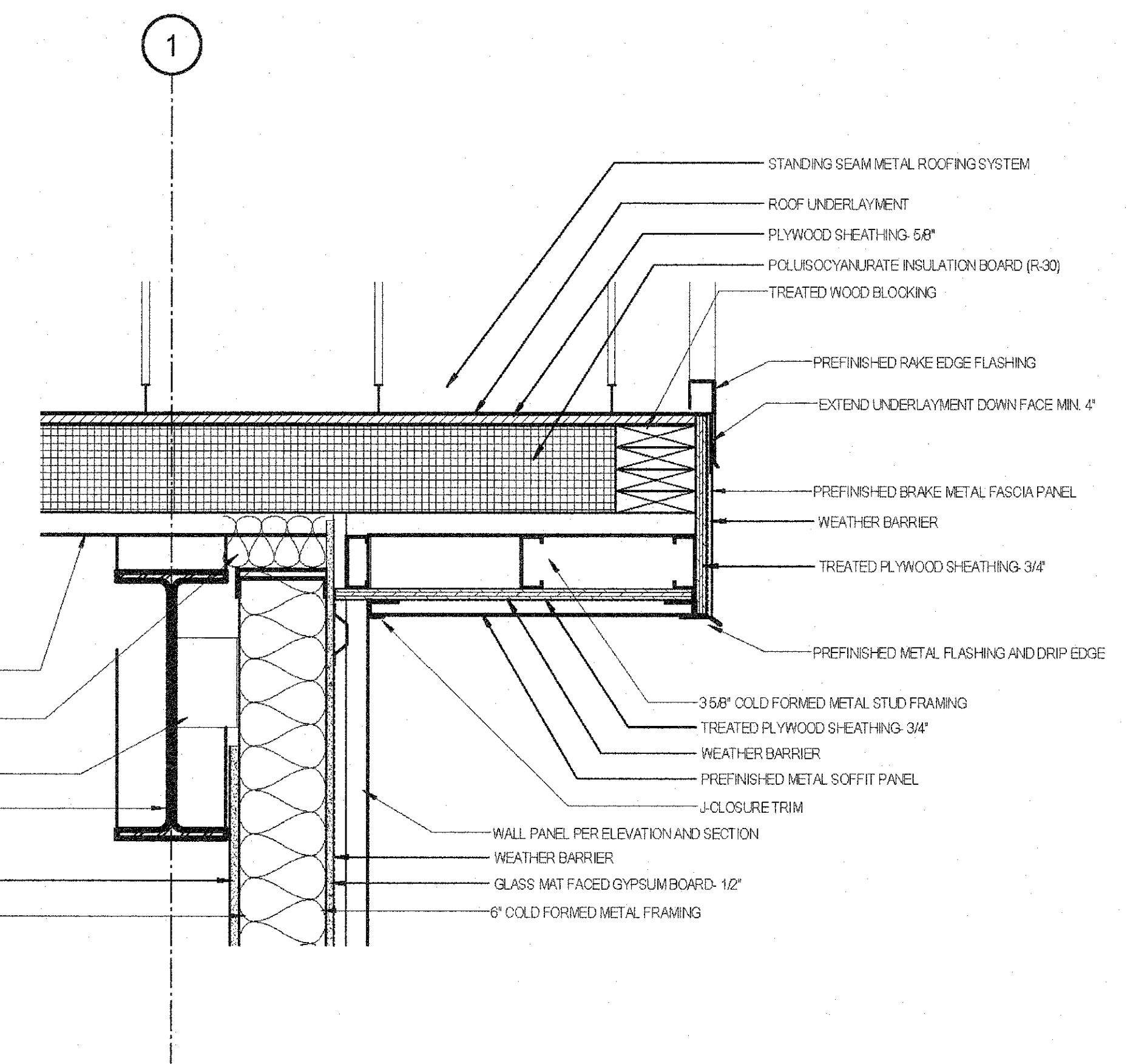
A306



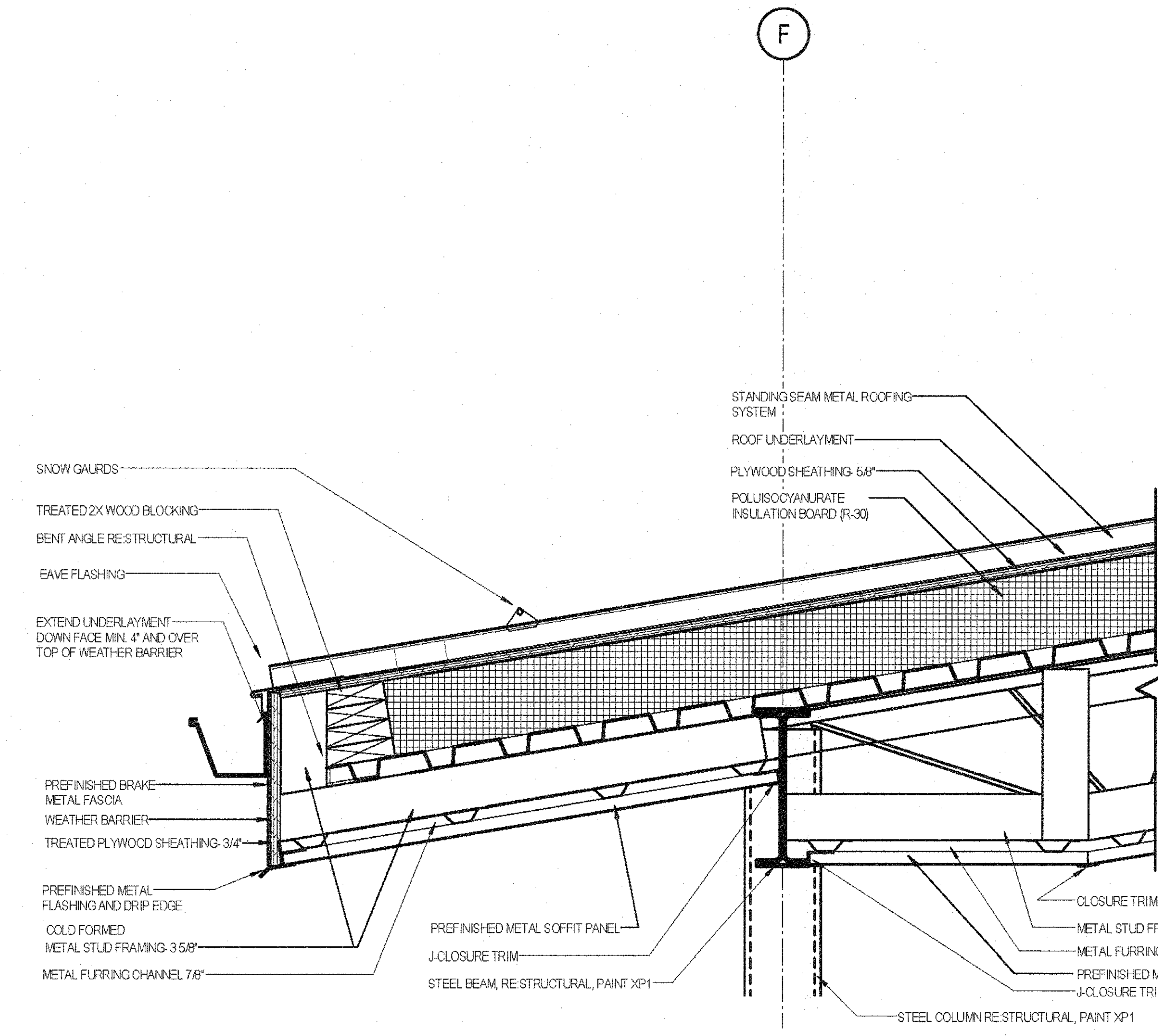
E2 TYPICAL ROOF OVERHANG AT LOW END
 SCALE: 1 1/2" = 1'-0"



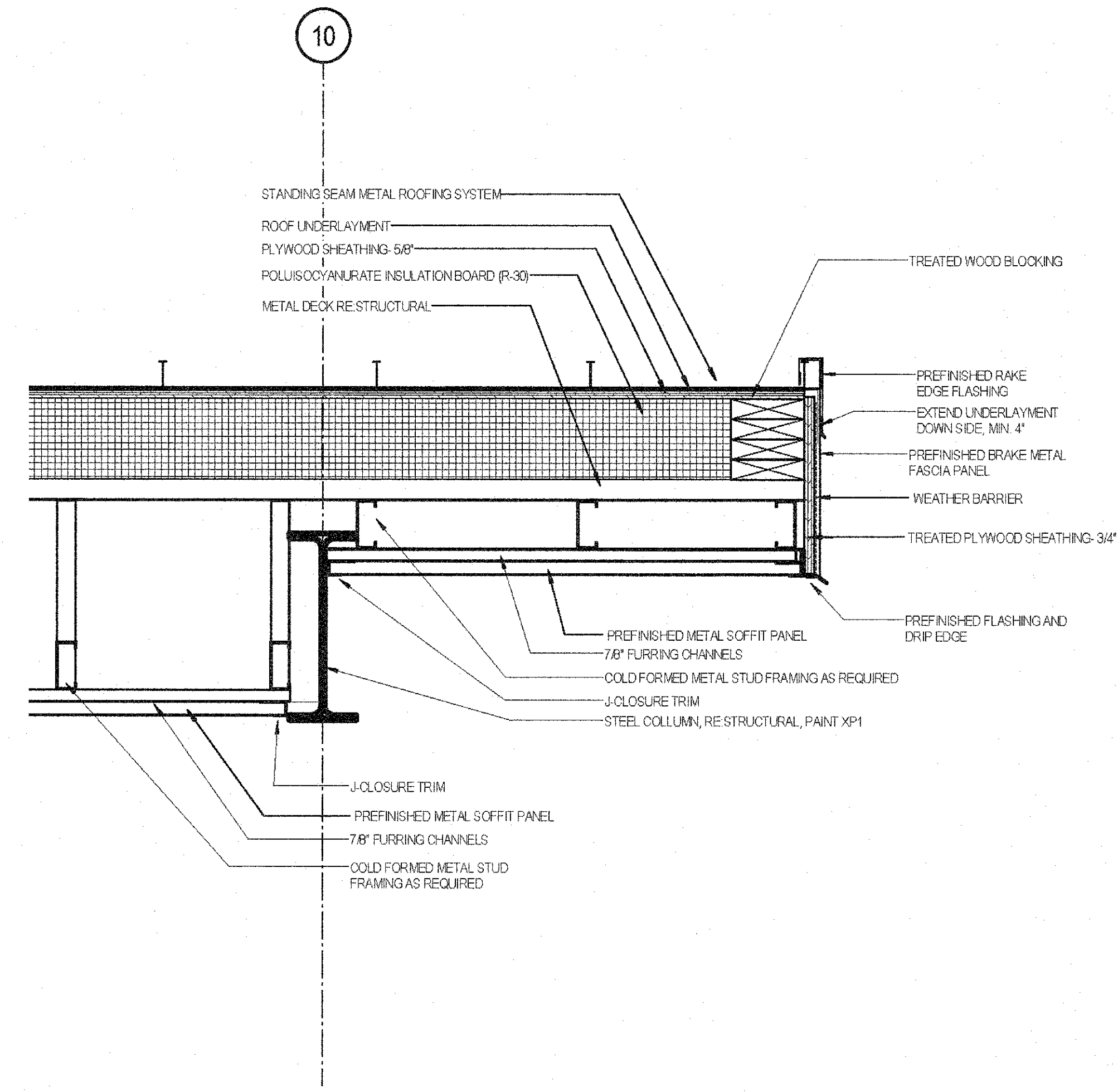
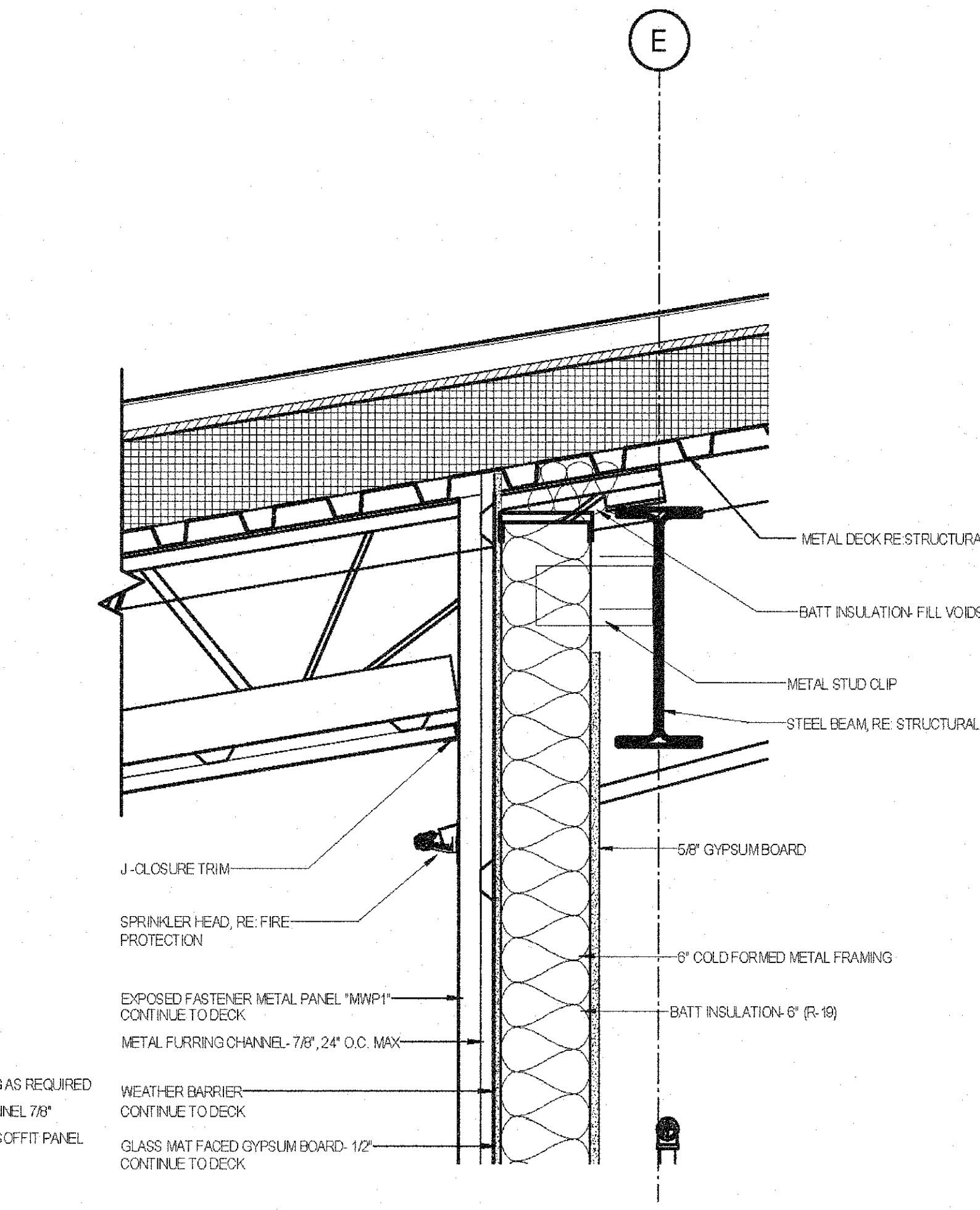
E9 TYPICAL ROOF OVERHANG AT HIGH END
 SCALE: 1 1/2" = 1'-0"



E15 TYPICAL ROOF OVERHANG AT SIDE
 SCALE: 1 1/2" = 1'-0"



K5 ROOF AND SOFFIT AT CANOPY
 SCALE: 1 1/2" = 1'-0"



K16 ROOF AND SOFFIT AT CANOPY SIDE
 SCALE: 1 1/2" = 1'-0"