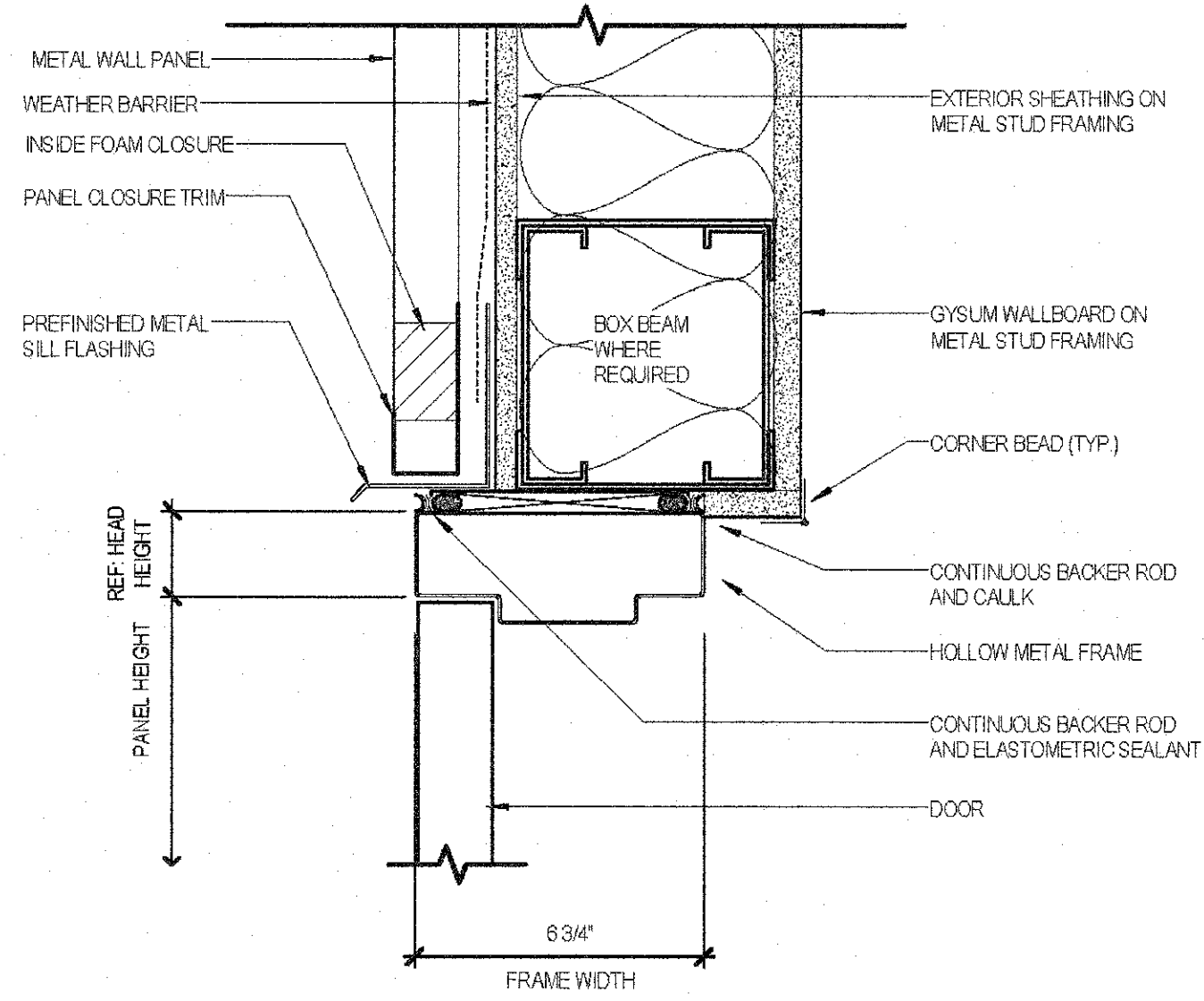
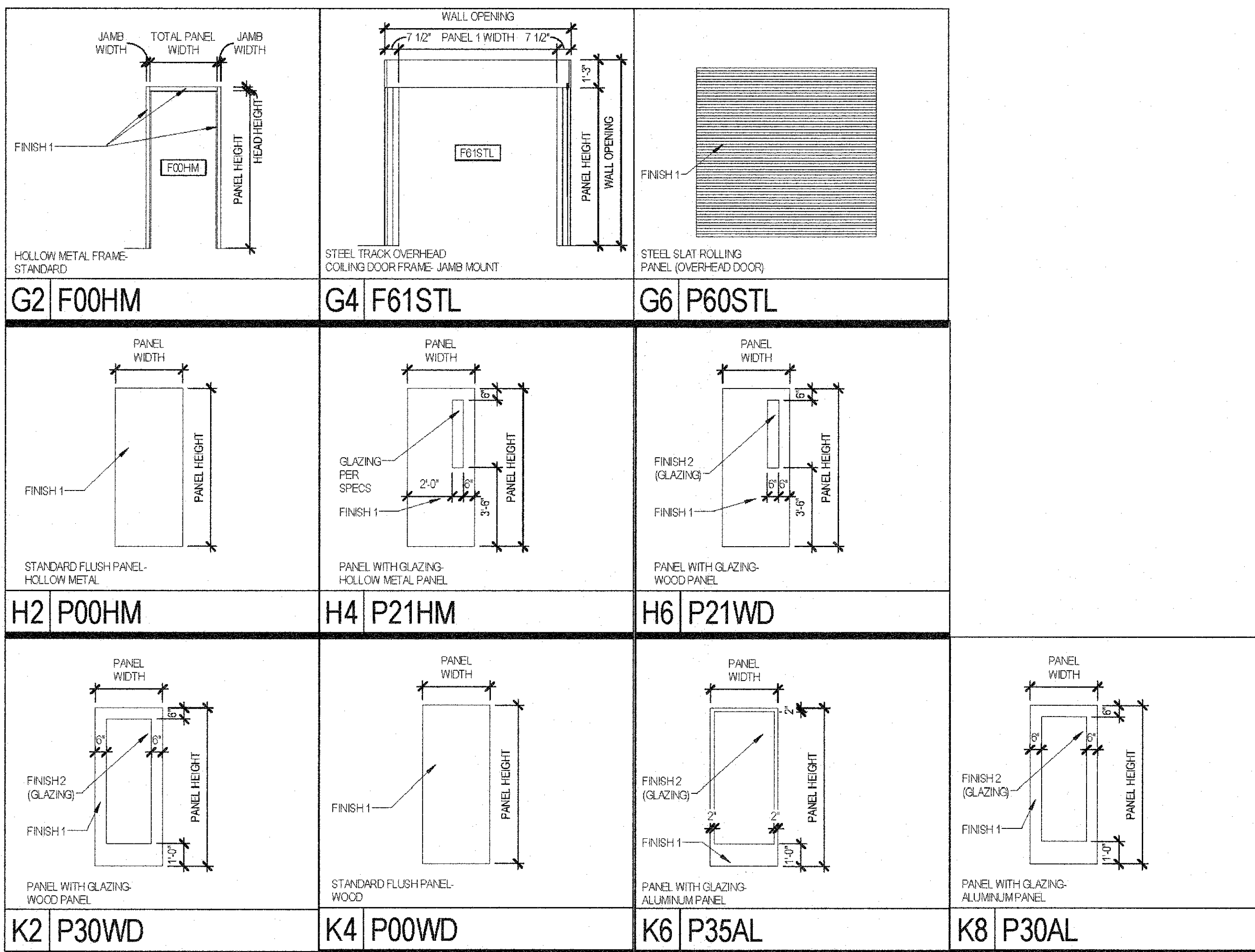
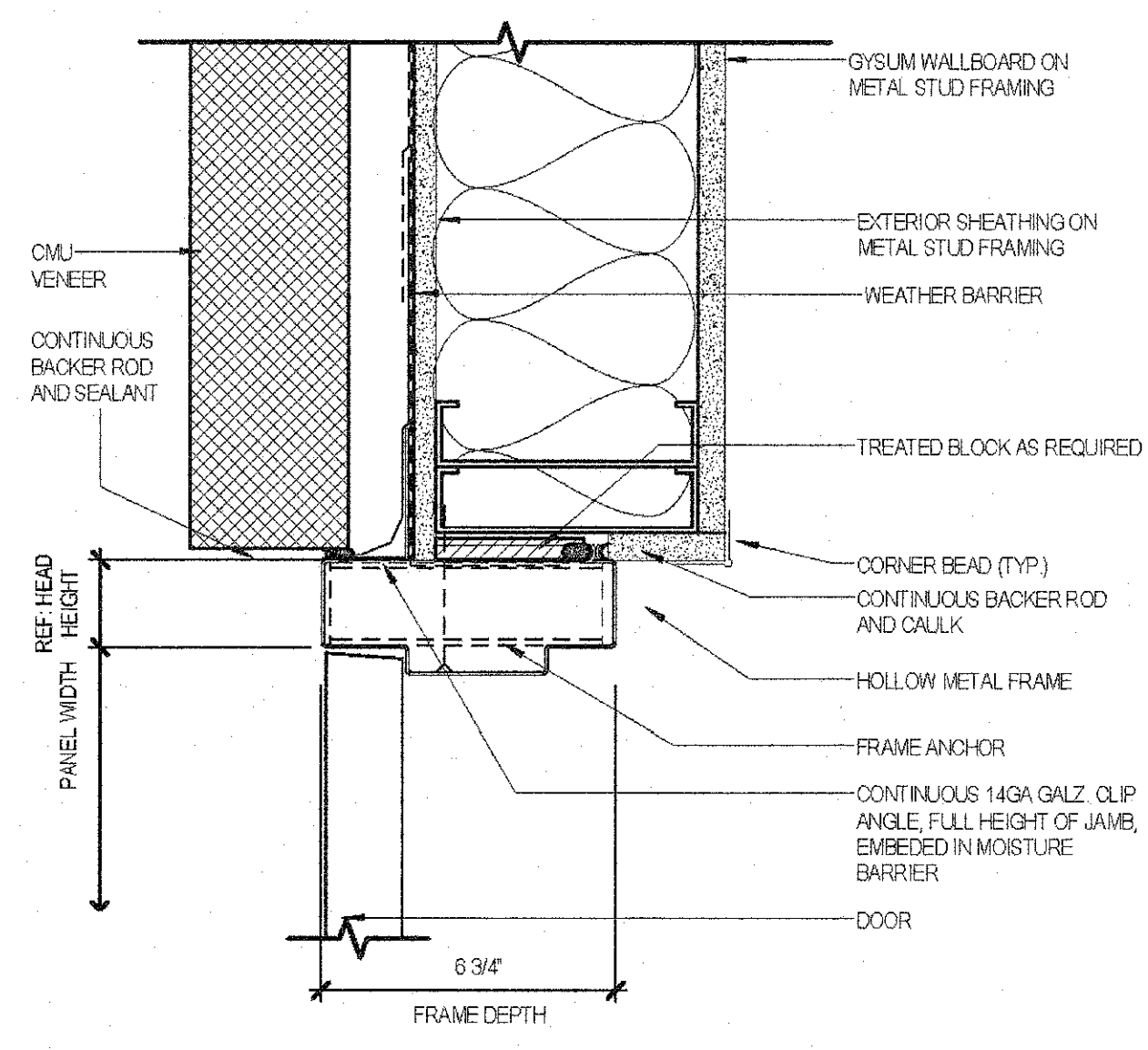


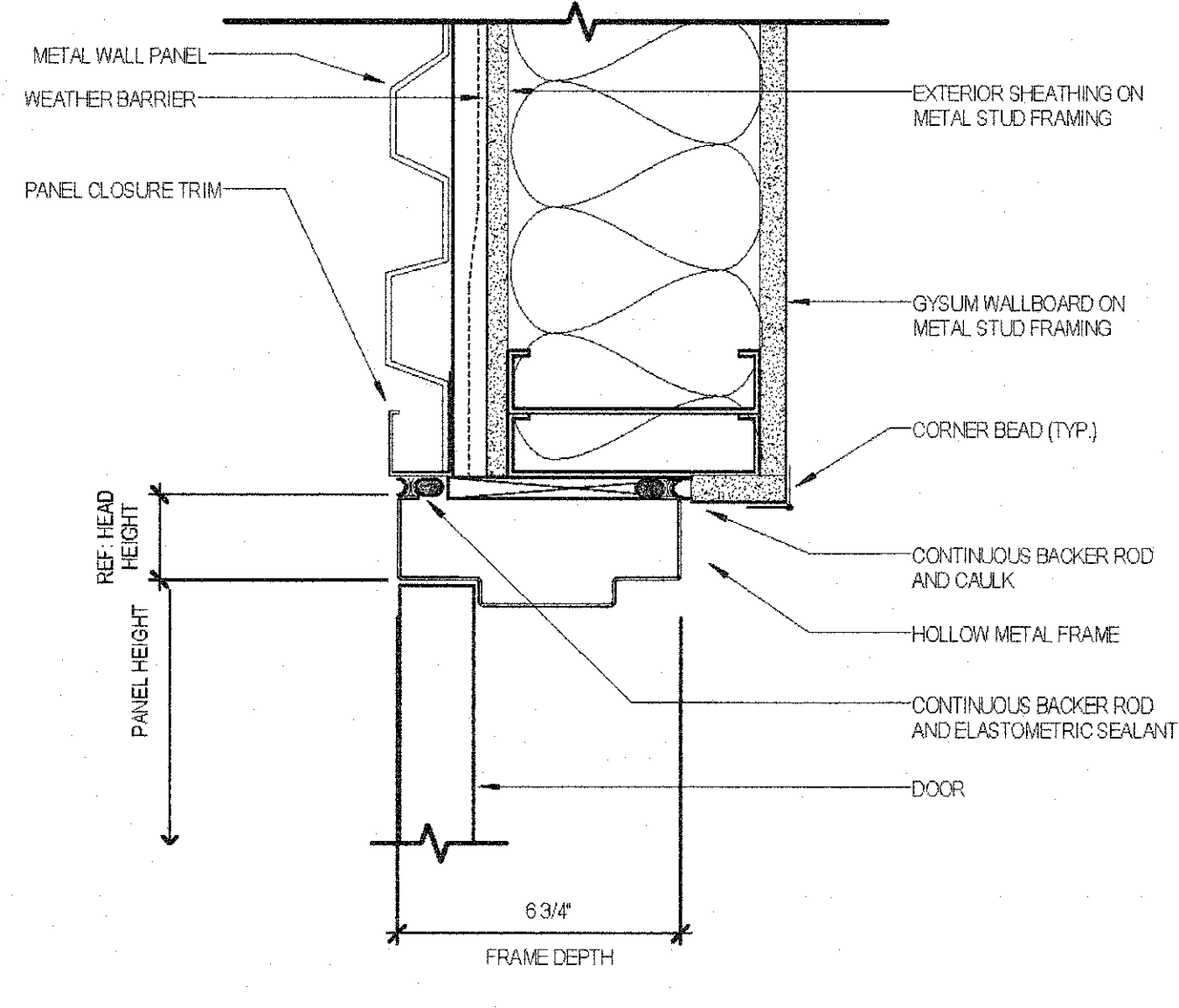
DOOR SCHEDULE													
NO.	RATING (FM)	DOOR	PANELS		FRAME TYPE	FRAME		JAMB WIDTH	PANEL FINISH 1	PANEL FINISH 2	FRAME FINISH	COMMENTS	
			NO. OF PANELS	TYPE		HEAD TYPE	JAMB TYPE						
100	2	P30AL	3'-0"	7'-0"	V'AL	K1A904	K2A908	2"	AL1	GLTT	AL1		
101A	2	P30AL	3'-0"	7'-0"	V'AL	K5A903	K12A903	2"	AL1	GLTT	AL1		
101B	1	P30AL	3'-0"	7'-0"	W'AL	F2A902	K2A902, K8A902	2"	AL1	GLTT	AL1		
101C	1	P30AL	3'-0"	7'-0"	W'AL	F2A902	K2A902, K8A902	2"	AL1	GLTT	AL1		
101D	1	P67AL	16'-0"	12'-0"	PER SPECS			NA	PER SPECS	PER SPECS	PER SPECS		
103	1	F00WM	3'-0"	7'-0"	F00HM	F5A903	F12A903	2"	WD2		P2		
104	2	F00WM	3'-0"	7'-0"	F00HM	F5A903	F12A903	2"	WD2		P2		
106A	1	F21WM	3'-0"	7'-0"	F00HM	F5A903	F12A903	2"	WD2		P2		
106B	1	F21HM	3'-0"	7'-0"	F00HM	11A901	K11A901, K17A901	2"	XP2		XP2		
106A	2	F21WM	3'-0"	7'-0"	F00HM	F5A903	F12A903	2"	WD2	GL3	P2		
106B	1	F21WM	3'-0"	7'-0"	F00HM	F5A903	F12A903	2"	WD2	GL3	P2		
106C	1	F21WM	3'-0"	7'-0"	F00HM	F5A903	F12A903	2"	WD2	GL3	P2		
106D	2	P30AL	3'-0"	7'-0"	H'AL	F2A902	K2A902, K8A902	2"	AL1	GLTT	AL1		
107	1	F00WM	3'-0"	7'-0"	F00HM	F5A903	F12A903	2"	WD2		P2		
108	1	F00WM	3'-0"	7'-0"	F00HM	F5A903	F12A903	2"	WD2		P2		
109	1	F00WM	3'-0"	7'-0"	F00HM	F5A903	F12A903	2"	WD2		P2		
111	1	F00HM	4'-0"	7'-0"	F00HM			2"	IF2		P2		
112	1	F00HM	3'-0"	7'-0"	F00HM	F5A903	F12A903	2"	WD2		P2		
114A	1	P30AL	3'-0"	7'-0"	S'AL	K5A903	K12A903	2"	AL1	GLST	AL1		
114B	1	F00WM	3'-0"	7'-0"	F00HM	F5A903	F12A903	2"	WD2		P2		
117	1	F00WM	3'-0"	7'-0"	F00HM	F5A903	F12A903	2"	WD2		P2		
118	1	F00WM	3'-0"	7'-0"	F00HM	F5A903	F12A903	2"	WD2		P2		
119	1	F00WM	3'-0"	7'-0"	F00HM	F5A903	F12A903	2"	WD2		P2		
120	1	F00WM	3'-0"	7'-0"	F00HM	F5A903	F12A903	2"	WD2		P2		
121	1	F00WM	3'-0"	7'-0"	F00HM	F5A903	F12A903	2"	WD2		P2		
122	1	F00WM	3'-0"	7'-0"	F00HM	F5A903	F12A903	2"	WD2		P2		
123	1	F00WM	3'-0"	7'-0"	F00HM	F5A903	F12A903	2"	WD2		P2		
125A	2	F00WM	3'-0"	7'-0"	F00HM	F5A903	F12A903	2"	WD2		P2		
125B	1	F21HM	3'-0"	7'-0"	F00HM	11A901	K11A901, K17A901	2"	XP2		XP2		
125C	1	F00STL	6'-0"	9'-0"	F00STL			NA	PER SPECS		PER SPECS		
126	1	P30AL	3'-0"	7'-0"	T'AL	K5A903	K12A903	2"	AL1	GLTT	AL1		
127	1	P30AL	3'-0"	7'-0"	V'AL	F2A902	K2A902, K8A902	2"	AL1	GLTT	AL1		
129	1	P30WD	3'-0"	7'-0"	P'HM	F5A903	F12A903	2"	WD2	GLST	P2		
130	1	P30WD	3'-0"	7'-0"	P'HM	F5A903	F12A903	2"	WD2	GLST	P2		
131	1	P30WD	3'-0"	7'-0"	F00HM	F5A903	F12A903	2"	WD2		P2		
132	1	P30WD	3'-0"	7'-0"	P'HM	F5A903	F12A903	2"	WD2	GLST	P2		
134	1	P30WD	3'-0"	7'-0"	Q'HM	F5A903	F18A903	2"	WD2	GLST	P2		
135	1	P30WD	3'-0"	7'-0"	Q'HM	F5A903	F18A903	2"	WD2	GLST	P2		
136	1	P30WD	3'-0"	7'-0"	Q'HM	F5A903	F18A903	2"	WD2	GLST	P2		
138	1	P30WD	3'-0"	7'-0"	Q'HM	F5A903	F18A903	2"	WD2	GLST	P2		
139	1	P30WD	3'-0"	7'-0"	Q'HM	F5A903	F18A903	2"	WD2	GLST	P2		
140	1	P30WD	3'-0"	7'-0"	Q'HM	F5A903	F18A903	2"	WD2	GLST	P2		
141	1	P30AL	3'-0"	7'-0"	S'AL	F2A902	K2A902, K8A902	2"	AL1	GLTT	AL1		
144	1	P30WD	3'-0"	7'-0"	R'HM	F5A903	F18A903	2"	WD2	GLST	P2		
145	1	P30WD	3'-0"	7'-0"	R'HM	F5A903	F18A903	2"	WD2	GLST	P2		
146	1	P30WD	3'-0"	7'-0"	R'HM	F5A903	F18A903	2"	WD2	GLST	P2		
147	1	P30WD	3'-0"	7'-0"	R'HM	F5A903	F18A903	2"	WD2	GLST	P2		
148	1	P30WD	3'-0"	7'-0"	R'HM	F5A903	F18A903	2"	WD2	GLST	P2		
149	1	P30WD	3'-0"	7'-0"	R'HM	F5A903	F18A903	2"	WD2	GLST	P2		



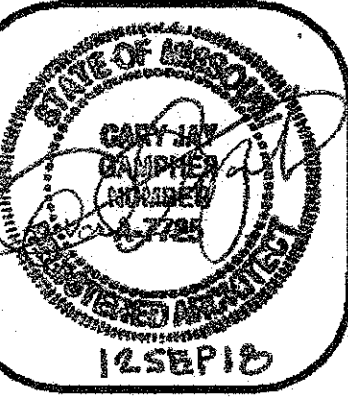
G11 EXT. HM HEAD AT MWP  
SCALE: 3" = 1'-0"



K11 EXT. HM JAMB AT MASONRY  
SCALE: 3" = 1'-0"



K17 EXT. HM JAMB AT MWP  
SCALE: 3" = 1'-0"



CENTRAL MISSOURI PROFESSIONAL SERVICES, INC.  
MISSOURI STATE CERTIFICATE OF AUTHORITY # 001558  
SSC ENGINEERING, INC.  
MECHANICAL/ELECTRICAL/PLUMBING ENGINEER  
MISSOURI STATE CERTIFICATE OF AUTHORITY # 001244  
SSC ENGINEERING, INC.  
STRUCTURAL ENGINEER  
MISSOURI STATE CERTIFICATE OF AUTHORITY # 001244

The Architects Alliance Inc.  
Missouri State Certificate of Authority # 000143  
631 West Main Street  
Jefferson City, Missouri  
(573) 636-5000 phone

DOOR SCHEDULE AND DETAILS

MISSOURI SOYBEAN INNOVATION CENTER  
NEW OFFICE BUILDING  
734 S. COUNTRY CLUB DRIVE  
JEFFERSON CITY, MISSOURI

PROJECT NO. 1613  
DATE: SEP. 12, 2018

A501