

FOUNDATION PLAN NOTES

- SEE SHEET S0.1 FOR GENERAL STRUCTURAL NOTES, INCLUDING MATERIAL STRENGTHS.
- SEE SHEET S1.1 FOR COLUMN, FOOTING, AND CMU WALL REINFORCING SCHEDULES.
- SEE SHEET S0.3 FOR TYPICAL SLAB ON GRADE DETAILS.
- SEE SHEET S0.3 FOR TYPICAL FOUNDATION DETAILS.
- REFER TO THE ARCHITECTURAL DRAWINGS AND/OR COORDINATE WITH THE ARCHITECT REGARDING MISSING DIMENSIONS.
- FINISHED FLOOR ELEVATION = 100'-0" UNLESS NOTED OTHERWISE, WHICH CORRESPONDS TO AN ACTUAL ELEVATION OF 811'-0"
- PROVIDE 4" NORMAL WEIGHT CONCRETE SLAB ON GRADE REINFORCED WITH #6@W1.4 x W1.4 WWR PLACED IN UPPER THIRD OF SLAB TYP UNO.
PROVIDE 5" NORMAL WEIGHT CONCRETE SLAB ON GRADE REINFORCED WITH #6@W2.9 x W2.9 WWR PLACED IN UPPER THIRD OF SLAB WHERE INDICATED THUS:
- PLACE SLAB ON 15 MIL VAPOR BARRIER, OVER 4" MINIMUM CRUSHED & COMPACTED ROCK, COMPACT TO 95% STANDARD PROCTOR.
- SEE ARCHITECTURAL DRAWINGS FOR LOCATIONS OF RAMPS, DEPRESSED SLABS, STEPPED SLABS, STOOPS AND NON-BEARING PARTITION WALLS.
- PLACE ALL EXTERIOR STOOP SLABS OVER LEAN CONCRETE MATERIAL PER TYPICAL DETAILS. DEPTH TO MATCH LOCAL FROST REQUIREMENTS.
- TOP OF EXTERIOR FOOTING ELEVATION 99'-0" UNLESS NOTED OTHERWISE ON PLAN.
- TOP OF INTERIOR FOOTING ELEVATION 99'-0" UNLESS NOTED OTHERWISE ON PLAN.
- COORDINATE TOP OF FOOTING ELEVATIONS WITH CROSSING MECHANICAL PLUMBING LINE INVERTS AND ELECTRICAL LINE LOCATIONS. STEP FOOTINGS DOWN ON EITHER SIDE OF LINE AND SLEEVE THROUGH FOUNDATION WALLS.
- ALL WALL FOOTINGS ARE MARK "F1" IN FOOTING SCHEDULE UNLESS NOTED OTHERWISE ON PLAN.
- REFER TO GEOTECHNICAL REPORT FOR TOP OF BEDROCK ELEVATION. REFER TO SPECIFICATIONS FOR MASS ROCK & POOR SOIL EXCAVATION QUANTITIES.
- SEE ARCHITECTURAL & CIVIL DRAWINGS FOR FOUNDATION DRAINAGE SYSTEM.
- REMOVE AND REPLACE POOR SOIL PER GEOTECHNICAL REPORT.
- "MANUAL OF STANDARD PRACTICE": DO NOT STICK DOWELS INTO WET CONCRETE. TIE IN PLACE PRIOR TO START OF CONCRETE PLACEMENT.

STRUCTURAL FOUNDATION SCHEDULE

MARK	SIZE	REINFORCING
F3	3'-0"x3'-0"x2'-0"	
F4	4'-0"x4'-0"x2'-0"	
F6	6'-0"x6'-0"x2'-0"	(7) #5 EA WAY BOT
F6-10	6'-0"x10'-0"x2'-0"	(11) #7 EA WAY BOT

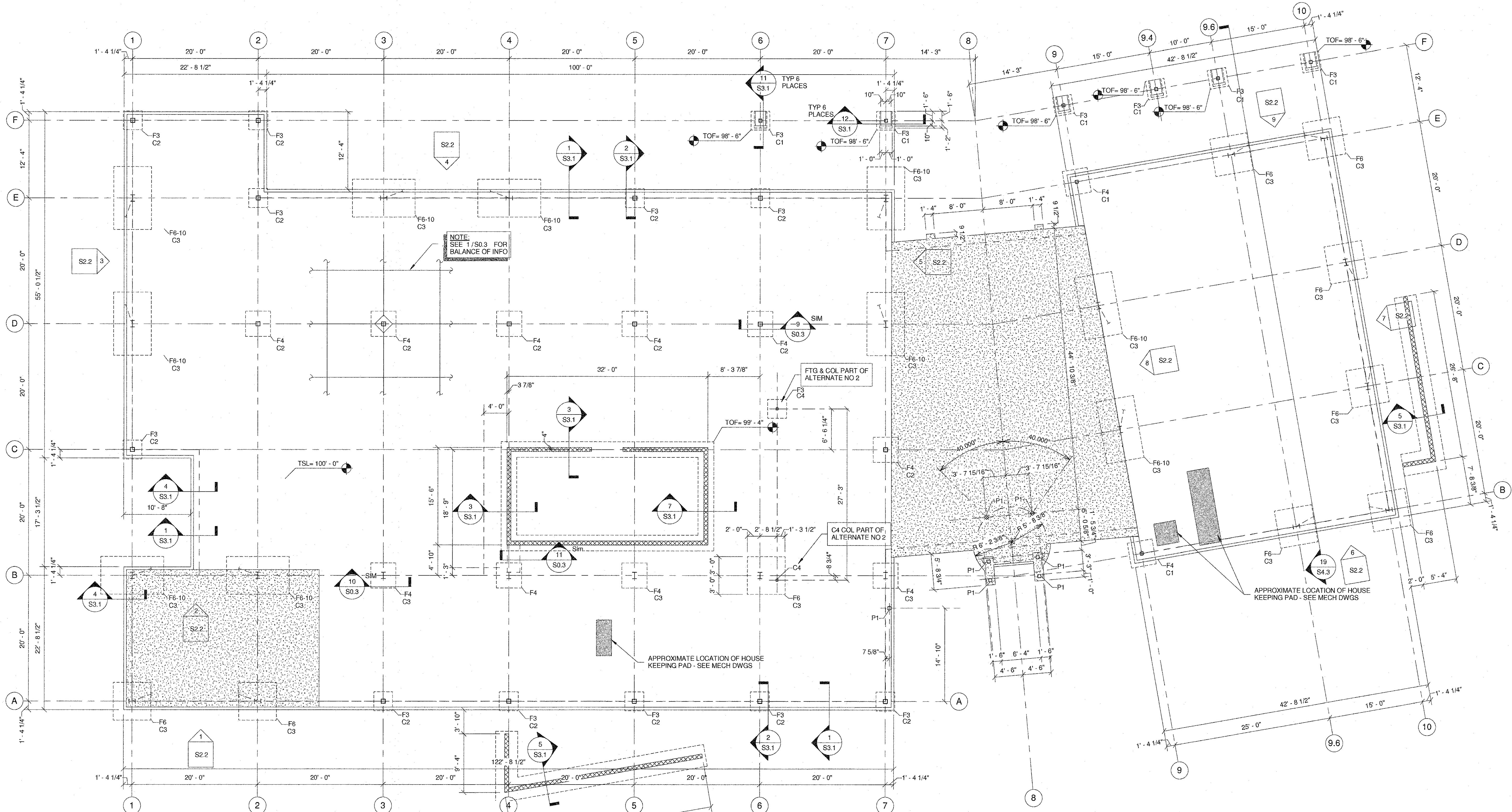
STRUCTURAL COLUMN SCHEDULE

MARK	SIZE	BASE PL TYPE
C1	HSS6x6x1/2	BP-1
C2	HSS8x8x1/2	BP-2
C3	W12x50	BP-3
C4	HSS4x4x3/8	BP-4

NOTE:
USE BASE PLATE TYPE LISTED IN THE COLUMN SCHEDULE UNLESS DIRECTED OTHERWISE BY DETAIL REFERENCE OR SECTION CUT. (ESPECIALLY @ BRACE FRAMES)
SEE SHEET S3.1 FOR BASE PLATE DETAILS

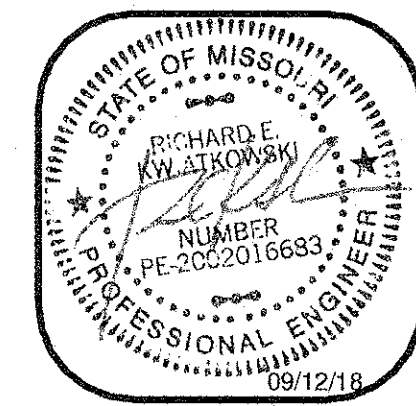
STRUCTURAL POST SCHEDULE

MARK	SIZE	BASE PL TYPE
P1	HSS6x6x1/4	BP-5



STRUCTURAL LEVEL 1 FOUNDATION PLAN
SCALE: 1/8" = 1'-0"
NORTH

The Staff and Schedules made up by the Document to which this is attached, and the Engineer's Design and Responsibility for all other Plans, Specifications, Estimates, and related to be used for any part or parts of the project, shall be the responsibility of the Engineer. Copyright © 2016 by SSC Engineering, Inc.



RICHARD E. KWIAWKOWSKI
MISSOURI STATE LICENSE NO. 2002016683 EXP: 12/31/18

CENTRAL MISSOURI PROFESSIONAL SERVICES, INC.
CIVIL ENGINEER
MISSOURI STATE CERTIFICATE OF AUTHORITY #
SSC ENGINEERING, INC.
MECHANICAL/ELECTRICAL/PLUMBING ENGINEER
MISSOURI STATE CERTIFICATE OF AUTHORITY #001244
SSC ENGINEERING, INC.
STRUCTURAL ENGINEER
MISSOURI STATE CERTIFICATE OF AUTHORITY #001244

The Architects Alliance inc.
Missouri State Certificate of Authority # 000143
631 West Main Street
Jefferson City, Missouri
(573) 636-5000 phone

STRUCTURAL FOUNDATION PLAN

**MISSOURI SOYBEAN INNOVATION CENTER
NEW OFFICE BUILDING**
734 S. COUNTRY CLUB DRIVE
JEFFERSON CITY, MISSOURI

PROJECT NO. 1613
DATE: SEPT. 12, 2018

S1.1

2017349 - BID/PERMIT SET - 09-12-18