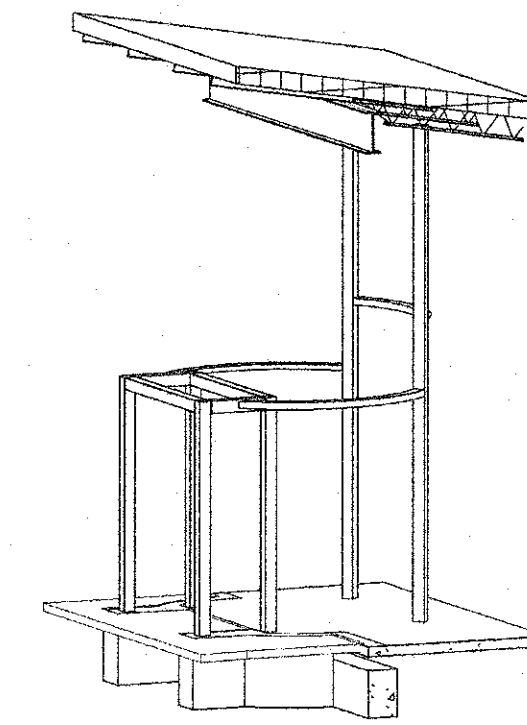


STRUCTURAL MEZZANINE FRAMING PLAN (HARDENED AREA)
SCALE: 1/8" = 1'-0"
NORTH



3D VIEW @ ENTRANCE

FLOOR FRAMING PLAN NOTES

GENERAL

- SEE SHEET S0.1 FOR GENERAL STRUCTURAL NOTES, INCLUDING MATERIAL STRENGTHS.
- SEE SHEET S1.1 FOR COLUMN & FOOTING REINFORCING SCHEDULES.
- SEE SHEET S0.3 FOR LINTEL SCHEDULES.
- REFER TO THE ARCHITECTURAL DRAWINGS AND/OR COORDINATE WITH THE ARCHITECT REGARDING MISSING DIMENSIONS.

METAL FLOOR DECK/SLAB

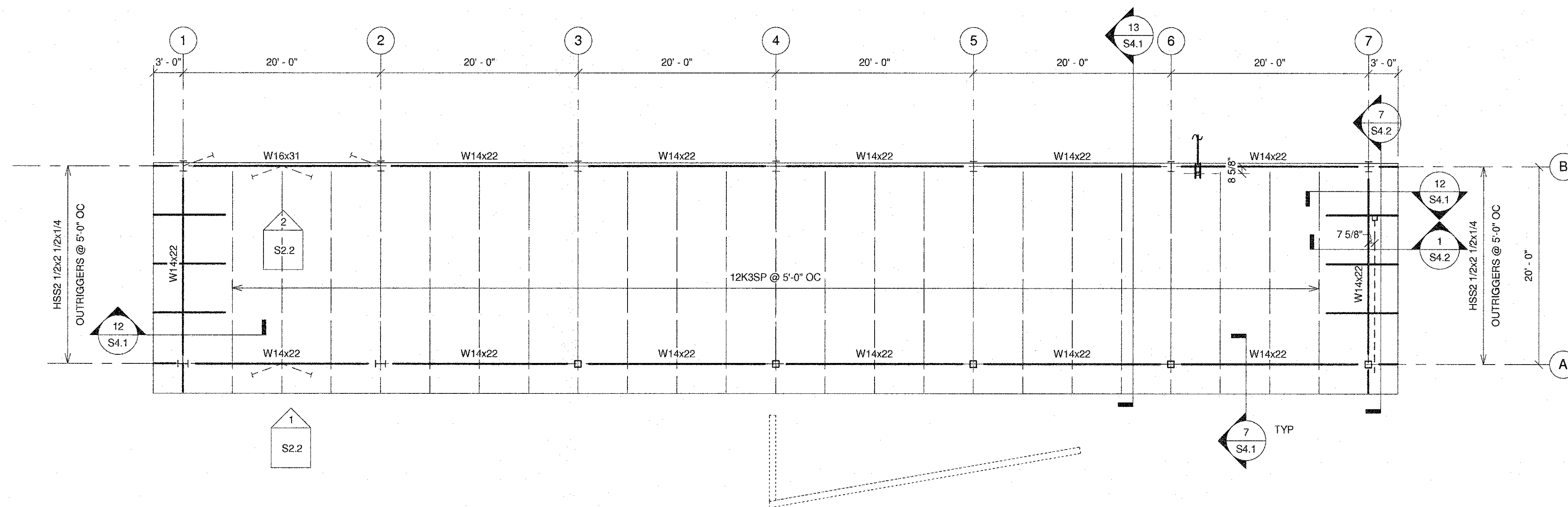
- INDICATES SPAN DIRECTION OF DECK.
- TOP OF SLAB ELEVATION 110'-5" UNLESS NOTED OTHERWISE.
- PROVIDE 2" - 20 GA. GALV. COMPOSITE METAL DECK WITH 3" NORMAL WEIGHT CONCRETE TOPPING (5" TOTAL THICKNESS). REINFORCE SLAB W/ #4 @ 12" WA WAY.
- SLAB IS TO BE LEVEL AFTER BEAM AND DECK DEFLECTION HAS OCCURRED DUE TO CONCRETE WEIGHT. PROVIDE ADDITIONAL CONCRETE REQUIRED TO ACCOUNT FOR DEFLECTIONS AND TO ACHIEVE A LEVEL SLAB. STEEL FLOOR BEAMS, SCREENED OFF OF COLUMNS TO ASSURE OVERALL FLATNESS AND LEVELNESS.

STEEL FLOOR BEAMS

- AT BEARING WALLS LOCATE MECHANICAL OPENINGS MINIMUM 16 INCHES FROM BEAM BEARING LOCATIONS. SEE MECHANICAL DRAWINGS FOR OPENING LOCATIONS NOT SHOWN.
- SEE 16/S0.3 FOR TYPICAL EMBED PLATE IN CONCRETE WALLS SUPPORTING STEEL BEAMS. SPECIAL CONDITIONS ARE NOTED ON PLAN.

MASONRY BEARING WALLS

- ALL MASONRY WALLS SHALL BE FULLY GROUTED FULL HEIGHT FOR HARDENED CONSTRUCTION.
- ALL LINTELS TO BE MAS LINTELS REINF W/ (2) #5 CONT. EXTENT LINTEL & REINF A MIN 2'-0" PAST OPENING EACH END PER TYP DETAIL 20/S0.3



STRUCTURAL LOW ROOF FRAMING PLAN
SCALE: 1/8" = 1'-0"
NORTH

The Seal and Certificate apply only to the Document to which they are Affixed, and Excessive Deviation may be made therefrom without the Engineer's Consent. This Certificate is not to be used for any other or other's Project. Copyright © 2018 by SSC Engineering, Inc.



RICHARD E. KWIATKOWSKI
MISSOURI STATE LICENSE NO. PE-2002016683 EXP: 12/31/18

CENTRAL MISSOURI PROFESSIONAL SERVICES, INC.
MISSOURI STATE CERTIFICATE OF AUTHORITY #
CIVIL ENGINEER
SSC ENGINEERING, INC.
MECHANICAL/ELECTRICAL/PLUMBING ENGINEER
MISSOURI STATE CERTIFICATE OF AUTHORITY #001244
SSC ENGINEERING, INC.
STRUCTURAL ENGINEER
MISSOURI STATE CERTIFICATE OF AUTHORITY #001244



Missouri State Certificate of Authority # 000143
631 West Main Street
Jefferson City, Missouri
(573) 636-5000 phone

STRUCTURAL MEZZANINE/LOW ROOF FRAMING PLAN

**MISSOURI SOYBEAN INNOVATION CENTER
NEW OFFICE BUILDING**
734 S. COUNTRY CLUB DRIVE
JEFFERSON CITY, MISSOURI

PROJECT NO. 1613
DATE: SEPT. 12, 2018

S1.2

2017349 - BID/PERMIT SET - 09-12-18