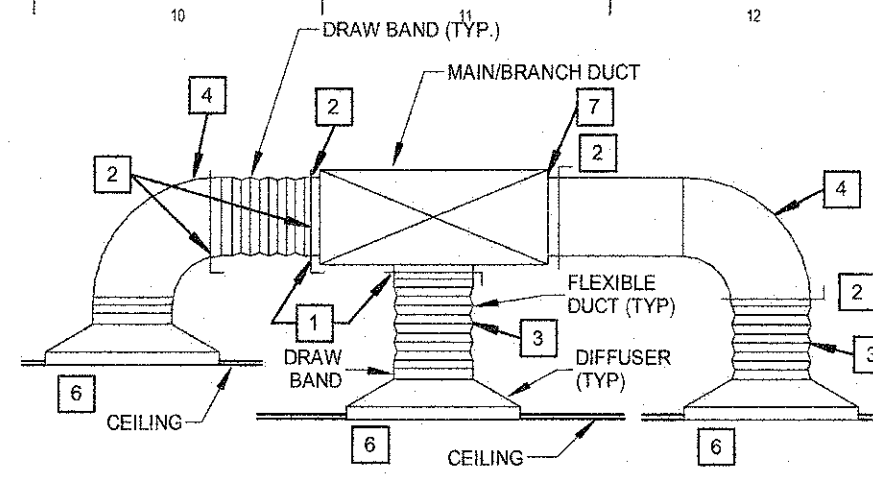


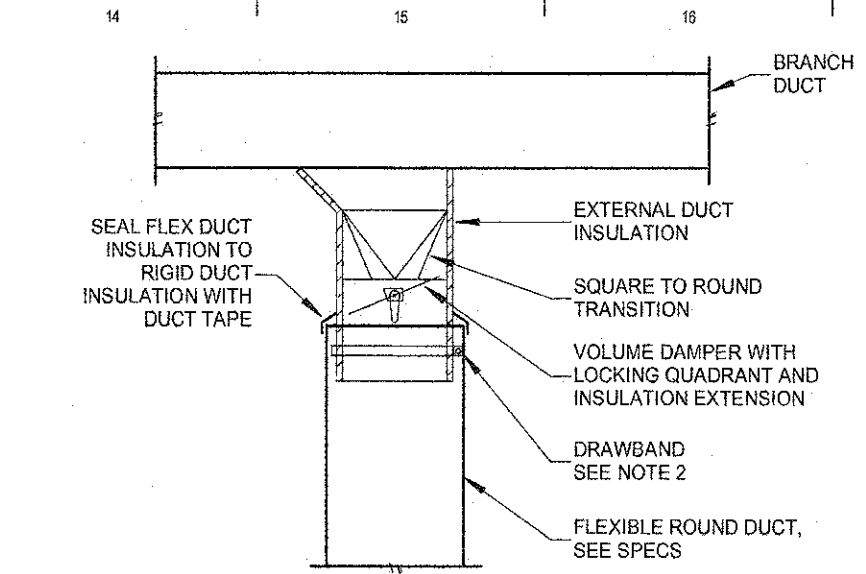
16 GAS RISER DIAGRAM
NOT TO SCALE



12 SUPPLY DIFFUSER DETAIL
NOT TO SCALE

GENERAL & KEYED NOTES:

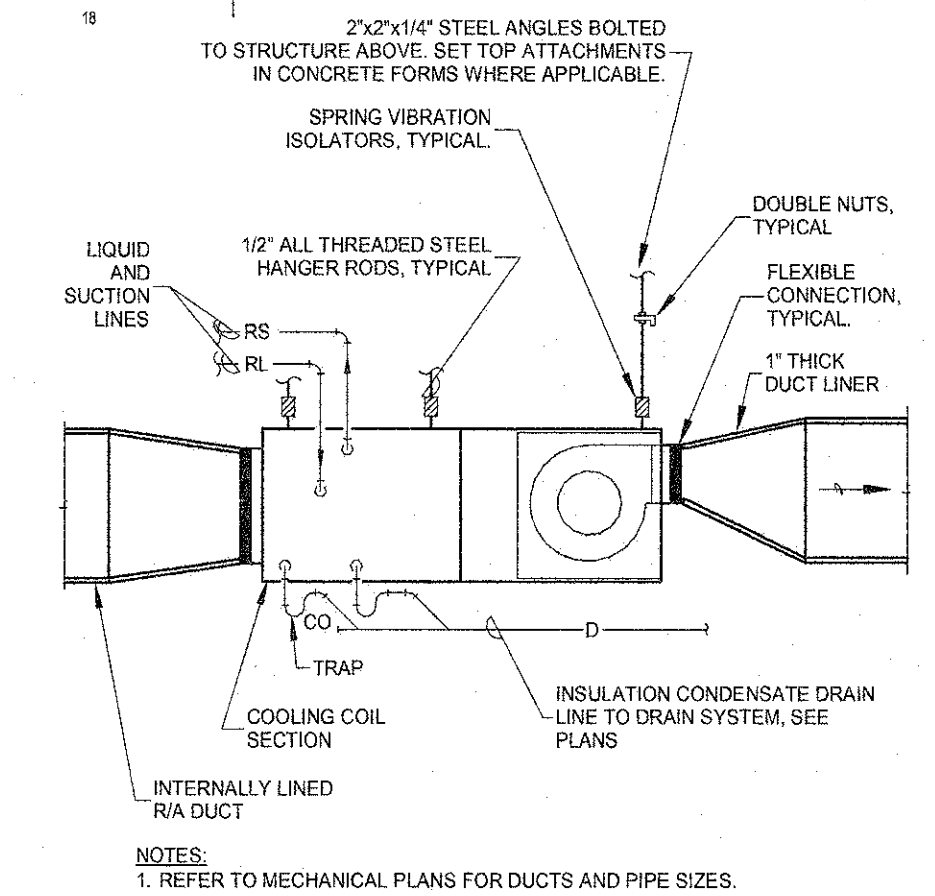
- REFER TO PLANS FOR ALL DUCT SIZES.
- LOCATE VOLUME DAMPER AT MAIN BRANCH DUCT. LOCATE AT END OF RUNOUT IN DRYWALL CEILING AREAS.
- MAXIMUM LENGTH OF FLEX DUCT SHALL BE 8 FT. (DESIGNER NOTE: MAX LENGTH OF FLEX DUCT SHALL BE 6 FT WITH MAXIMUM OF ONE ELBOW, FOR WASH PROJECTS)
- WHERE FLEX DUCT TURNS 90° TO CONNECT TO THE DIFFUSER, PROVIDE A 90° ADJUSTABLE METAL ELBOW, DO NOT USE FLEX DUCT AS ELBOW.
- TAB SHALL ACCESS DAMPERS IN DRYWALL CEILING BY LIFTING DIFFUSER OUT OF CEILING.
- FURNISH RAPID MOUNT FRAME FOR DIFFUSERS IN DRYWALL CEILINGS.
- SPIN IN FITTING.



8 FLEXIBLE DUCT CONNECTION TO BRANCH - INSULATED
NOT TO SCALE

NOTES:

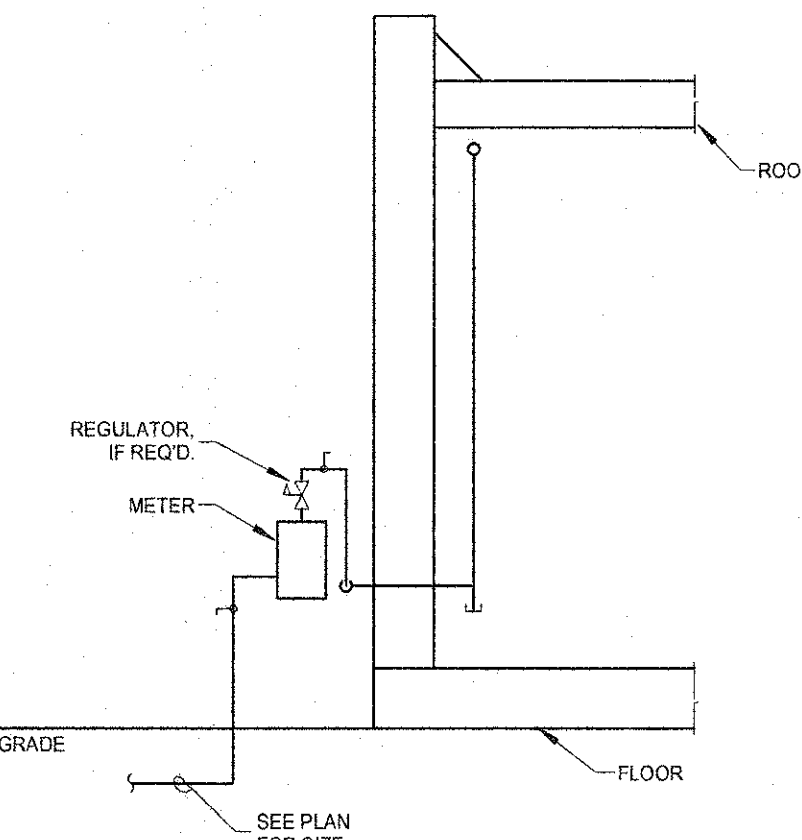
- THIS DETAIL IS APPLICABLE FOR FLEXIBLE ROUND DUCT TAKE-OFFS FROM BRANCH DUCTS TO DIFFUSERS.
- FLEXIBLE DUCT INSULATION SHALL TERMINATE AT SIDE OF BRANCH DUCT SO NO UNINSULATED METAL PARTS ARE EXPOSED.



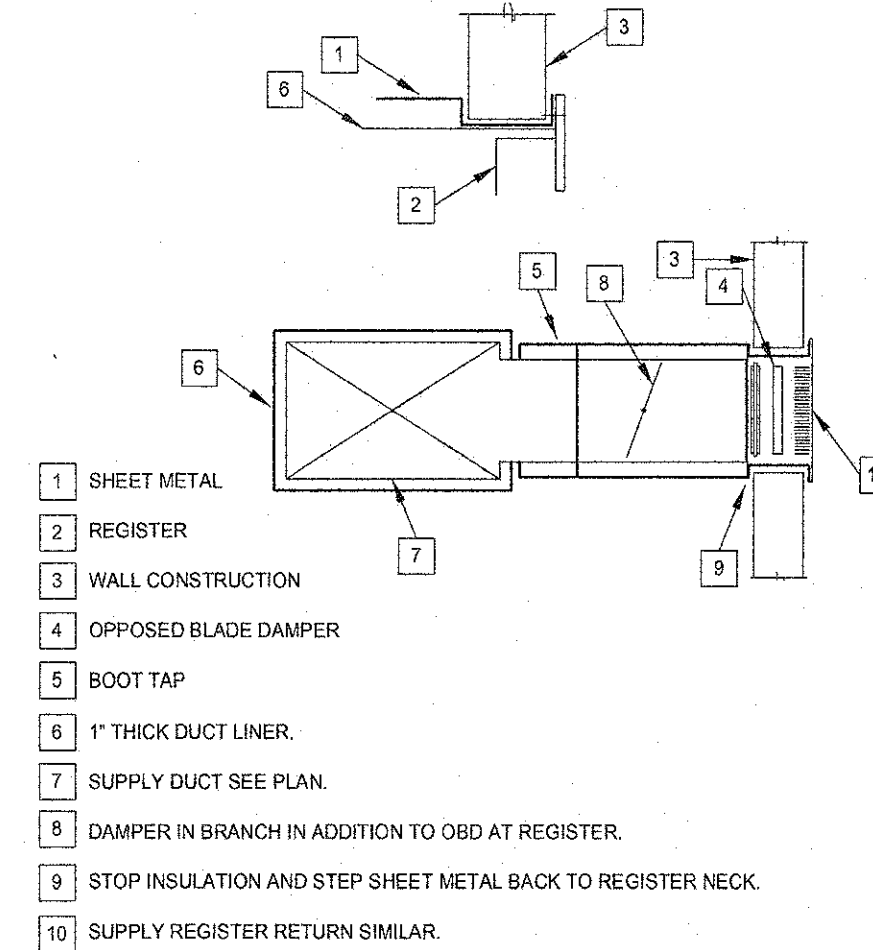
4 FAN COIL UNIT
NOT TO SCALE

NOTES:

- REFER TO MECHANICAL PLANS FOR DUCTS AND PIPE SIZES.

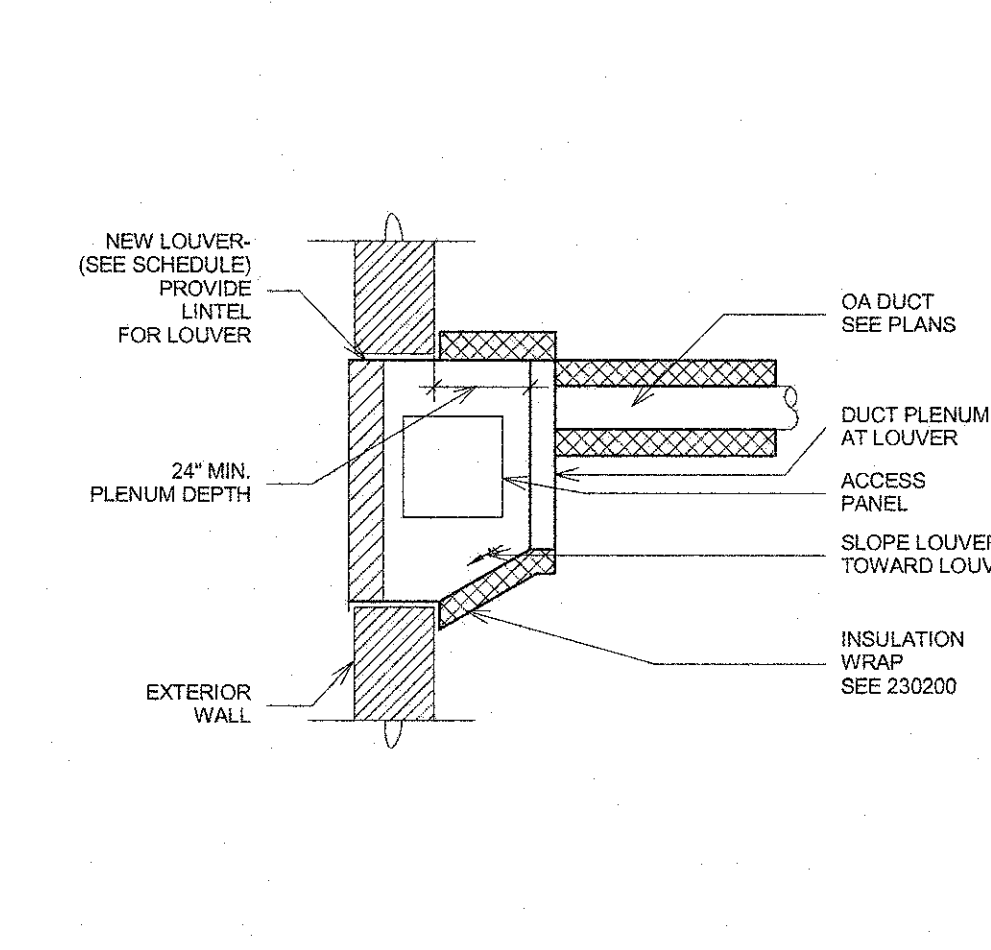


15 GAS SERVICE ENTRANCE
NOT TO SCALE

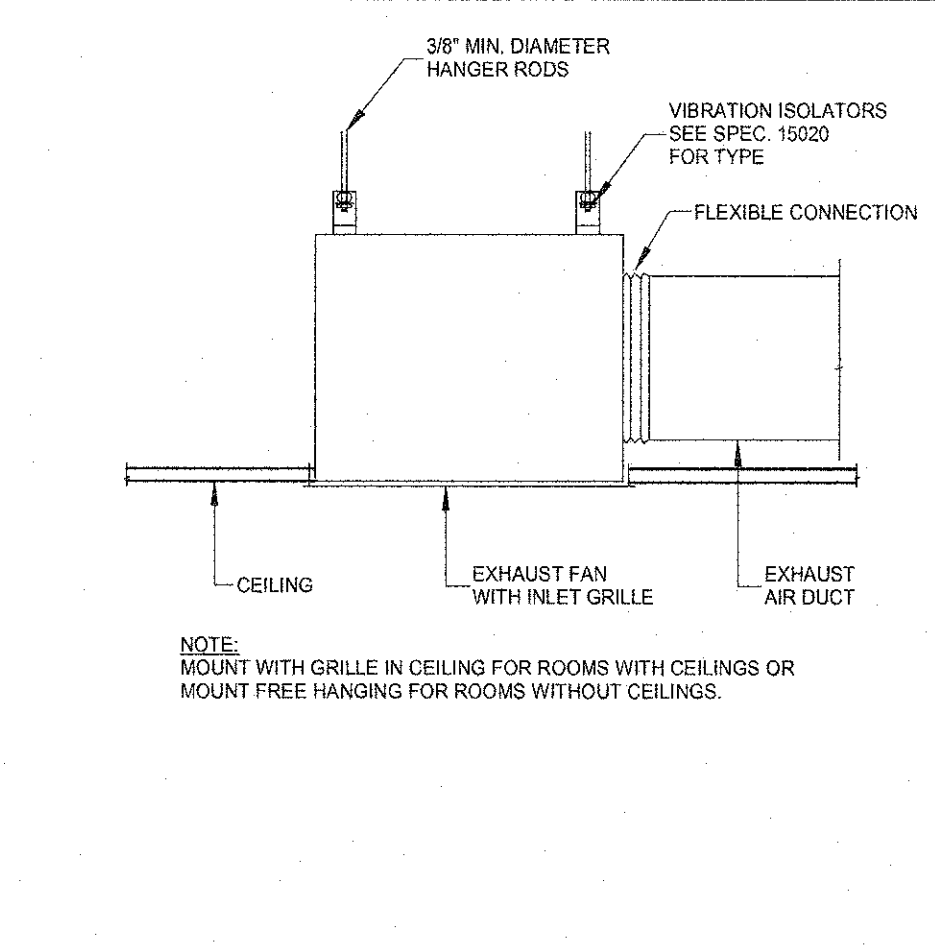


11 SIDEWALL REGISTER - INSULATED
NOT TO SCALE

- SHEET METAL
- REGISTER
- WALL CONSTRUCTION
- OPPOSED BLADE DAMPER
- BOOT TAP
- 1" THICK DUCT LINER
- SUPPLY DUCT SEE PLAN
- DAMPER IN BRANCH IN ADDITION TO OBD AT REGISTER
- STOP INSULATION AND STEP SHEET METAL BACK TO REGISTER NECK
- SUPPLY REGISTER RETURN SIMILAR

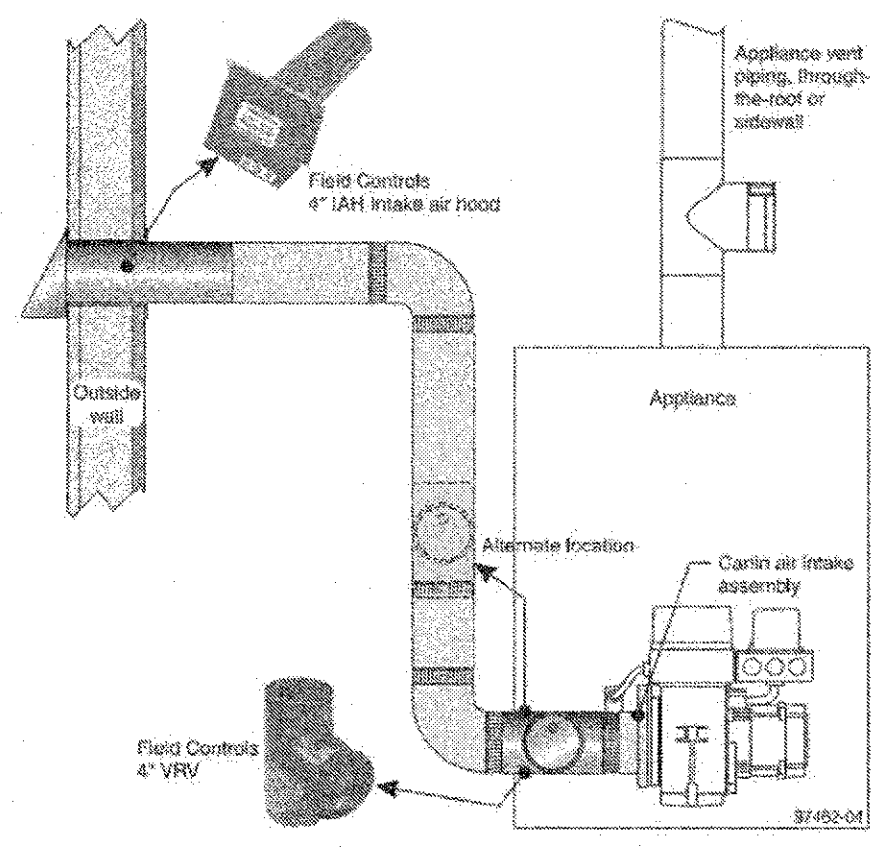


7 LOUVER SECTION DETAIL
NOT TO SCALE

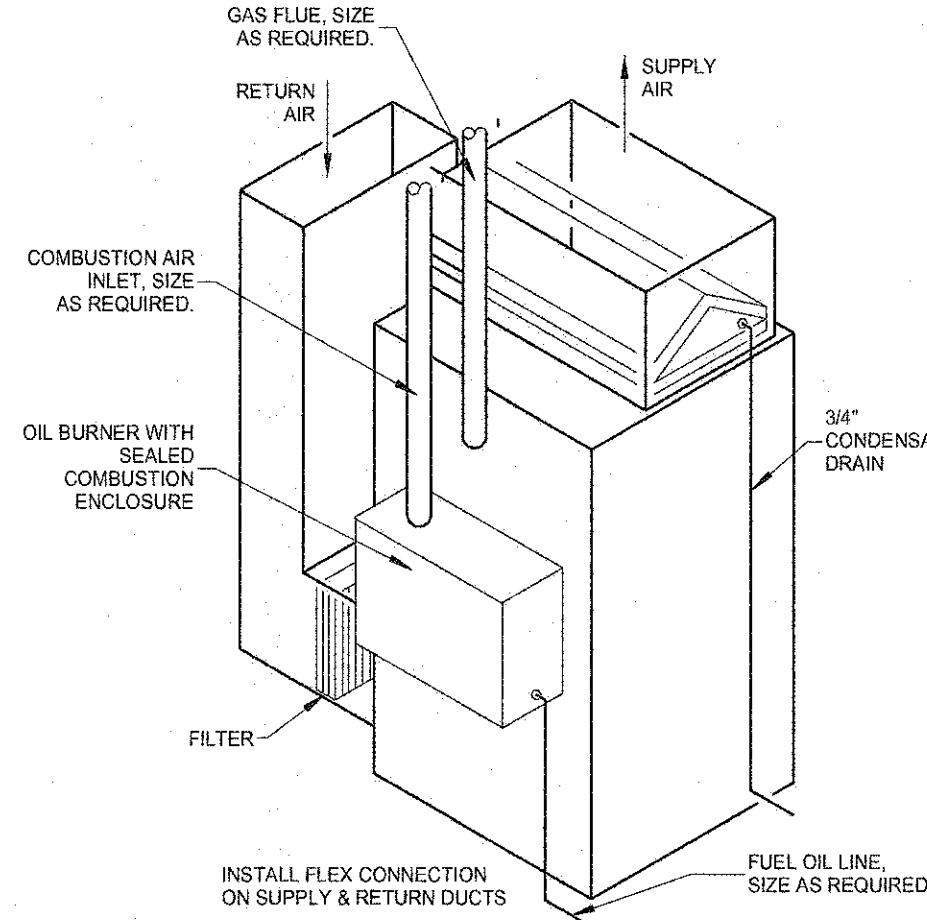


3 CEILING EXHAUST FAN CONNECTION DETAIL
NOT TO SCALE

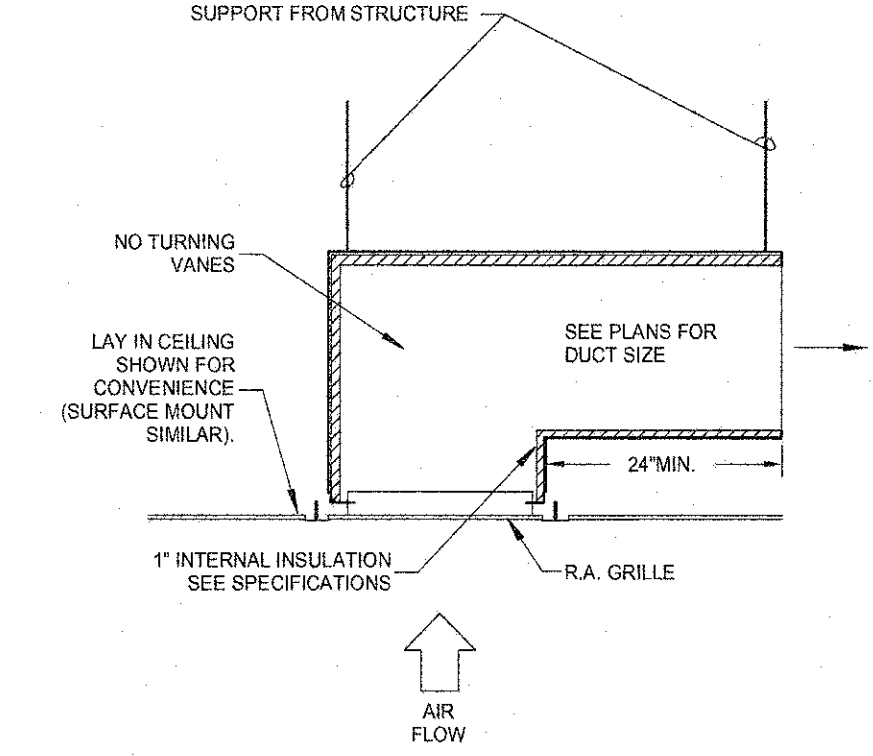
NOTE: MOUNT WITH GRILLE IN CEILING FOR ROOMS WITH CEILINGS OR MOUNT FREE HANGING FOR ROOMS WITHOUT CEILINGS.



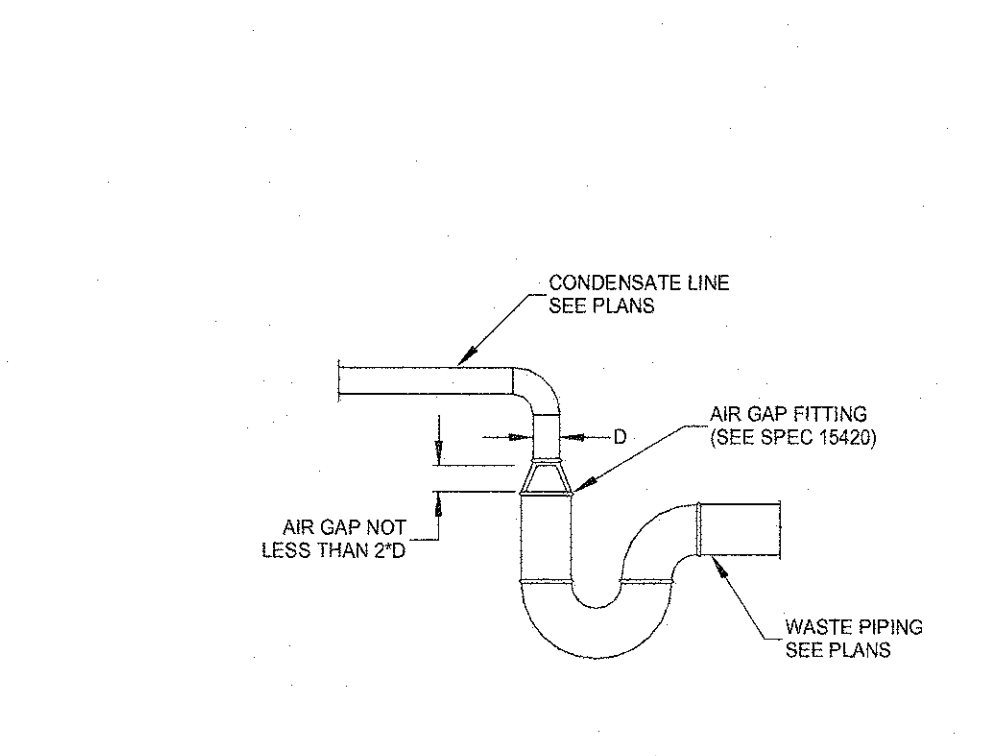
18 OIL BURNER WATER HEATER COMBUSTION AIR AND FLUE DETAIL
NOT TO SCALE



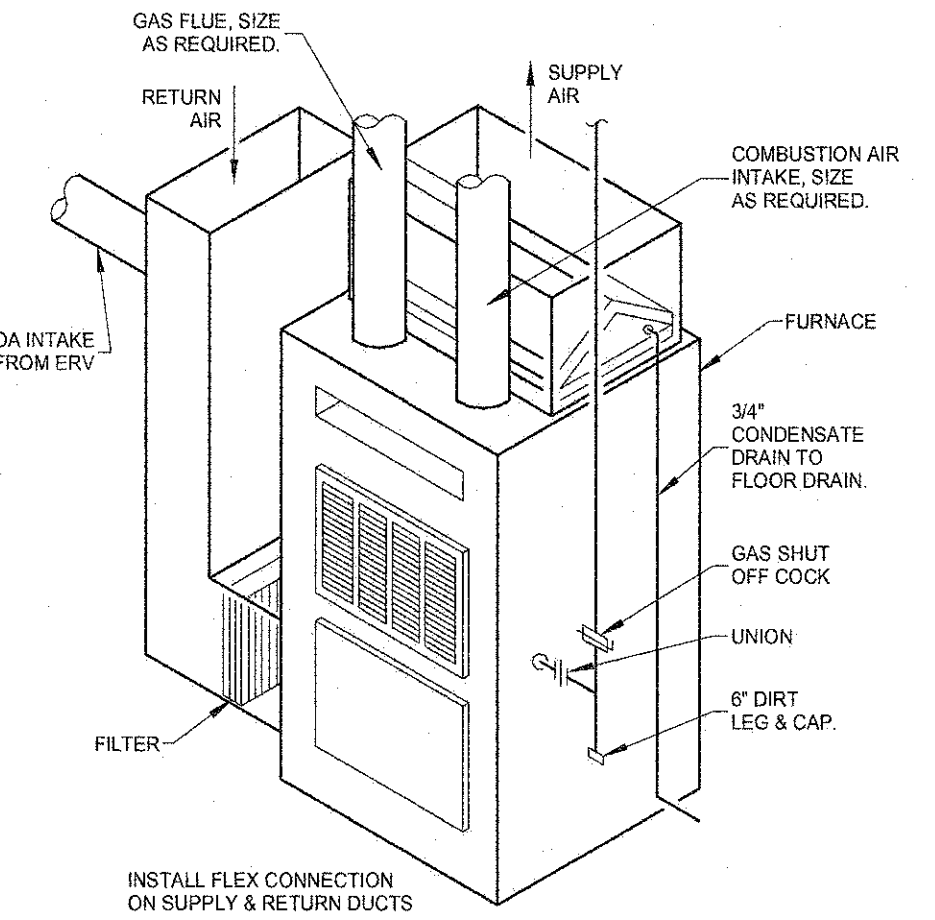
14 OIL FURNACE DETAIL
NOT TO SCALE



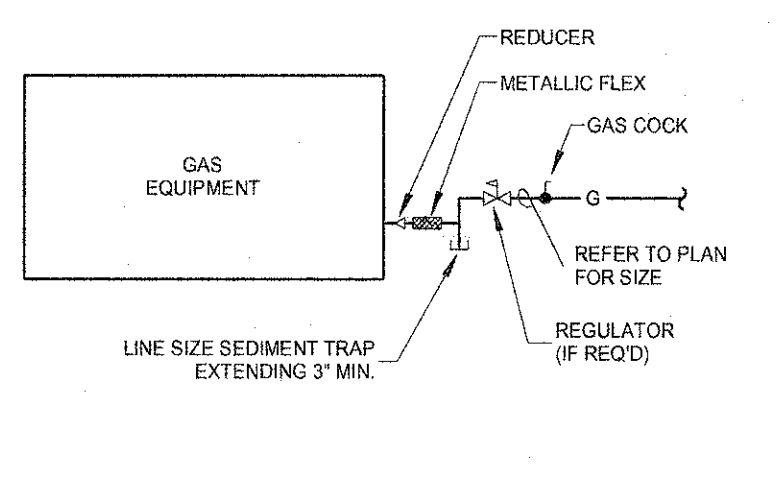
10 R.A. SOUND BOOT DETAIL
NOT TO SCALE



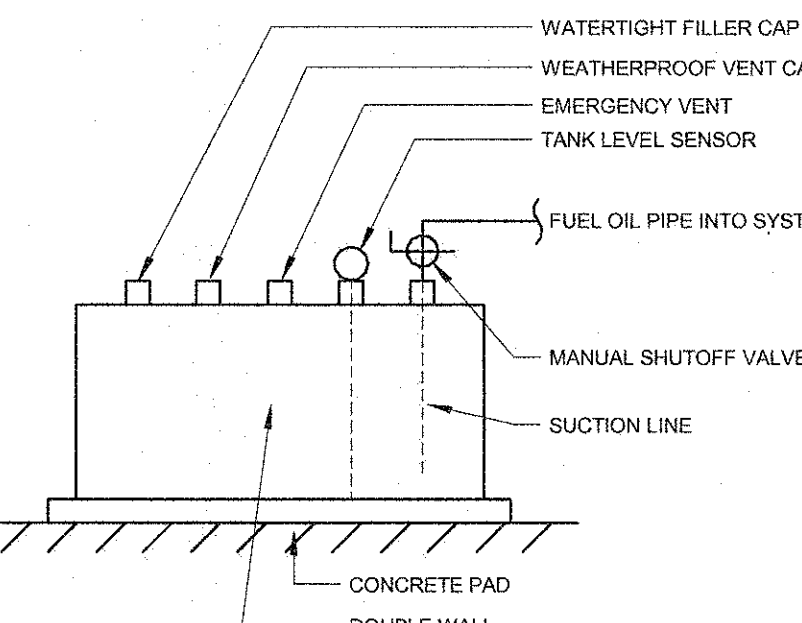
6 CONDENSATE DRAIN PIPING WITH AIR GAP
NOT TO SCALE



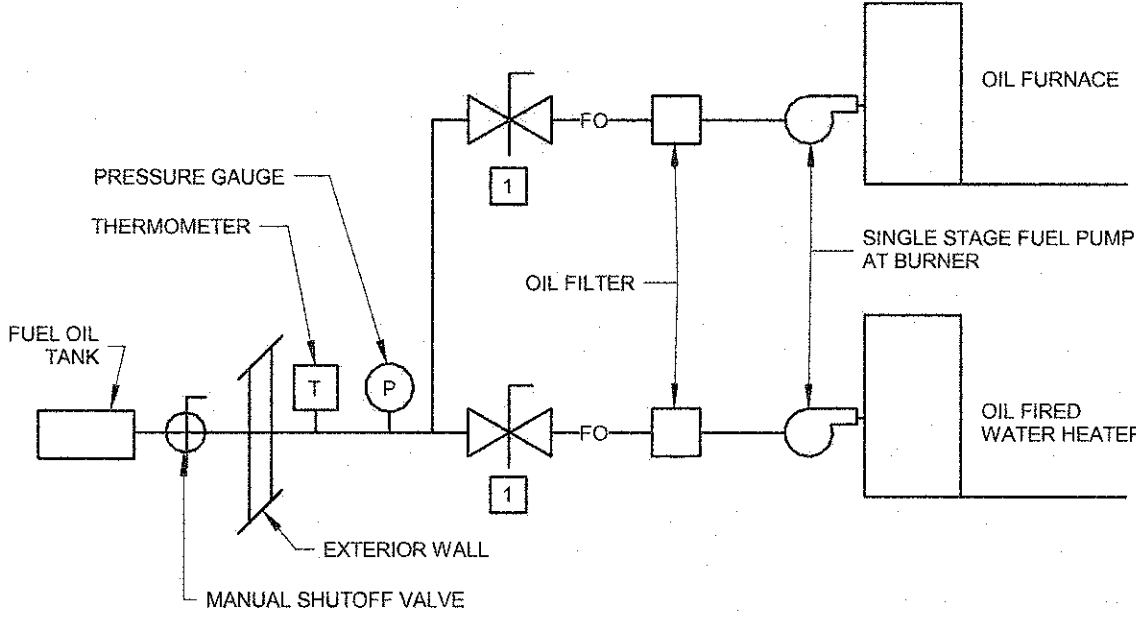
2 GAS FURNACE DETAIL
NOT TO SCALE



17 GAS CONNECTION
NOT TO SCALE



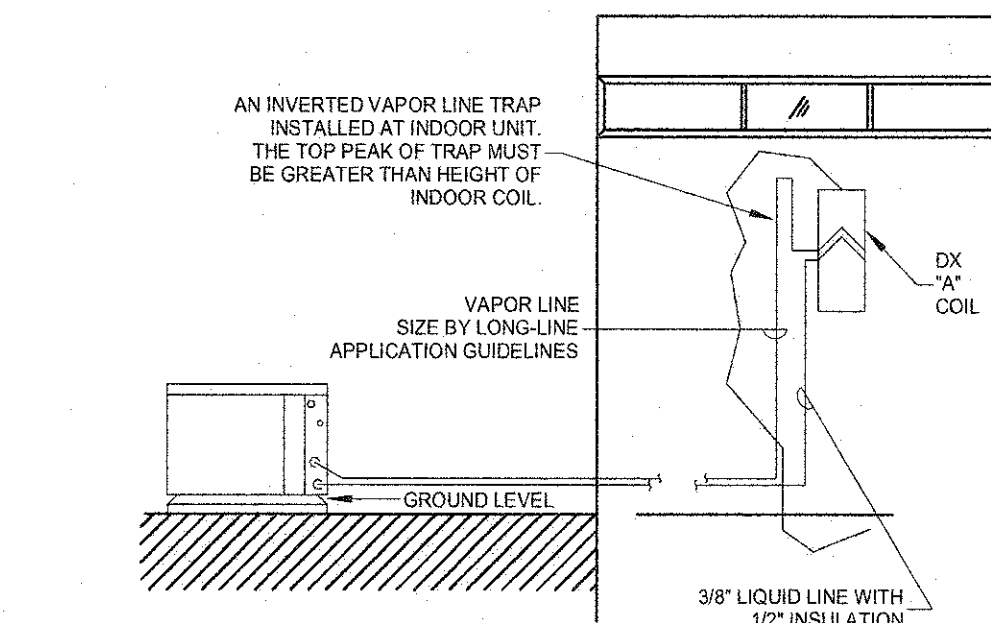
13 EXTERIOR FUEL OIL TANK DETAIL
NOT TO SCALE



9 FUEL OIL SYSTEM DETAIL
NOT TO SCALE

NOTES:

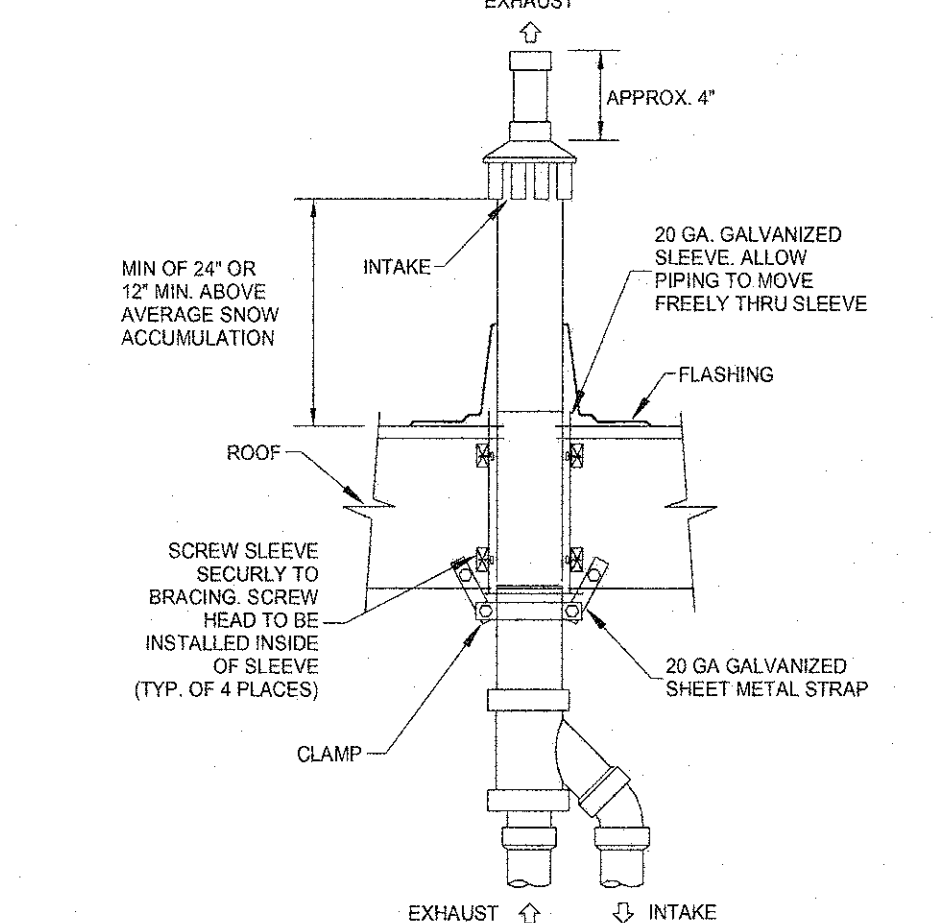
- FUSIBLE LINK SAFETY SHUT OFF VALVE FROM BECKETT OR PREFERRED



5 AIR CONDITIONER DETAIL
NOT TO SCALE

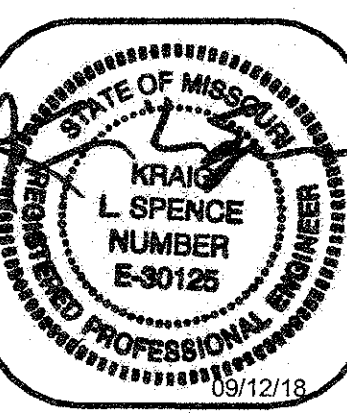
NOTES:

- MAXIMUM ELEVATION DIFFERENCE IS 50'
- MAX EQUIVALENT TOTAL LINE LENGTH IS 175'
- INCREASE TXV PISTON ONE FULL SIZE AND ADJUST SIZE FOR HEIGHT DIFFERENCE FOR INDOOR UNIT IN ACCORDANCE WITH MANUFACTURER'S LONG-LINE APPLICATION GUIDELINES
- PROVIDE AND INSTALL 60VA (MINIMUM) LOW VOLTAGE TRANSFORMER
- PROVIDE ADDITIONAL REFRIGERANT CHARGE OF 8 oz PER FOOT OF LIQUID LINE OVER 15' FT. ANY APPLICATION WHICH HAS PIPING REQUIREMENTS GREATER THAN 50' OR INSTALLATIONS WHERE INDOOR UNIT IS ABOVE OUTDOOR UNIT.



1 CONCENTRIC ROOF TERMINATION DETAIL
NOT TO SCALE

The Seal and Signature apply only to the Document to which they are Affixed. Any Electronic Decision any other Documents or instruments relating to or intended to be used for any part or parts of the Copyright © 2018 by SSC Engineering, Inc.



CENTRAL MISSOURI PROFESSIONAL SERVICES, INC.
MISSOURI STATE CERTIFICATE OF AUTHORITY #
KRAIG L. SPENCE
NUMBER E-30125
03/12/18
Kraig L. Spence
E-30125



MISSOURI STATE CERTIFICATE OF AUTHORITY #001244
SSC ENGINEERING, INC.
MECHANICAL/ELECTRICAL/PLUMBING ENGINEER
MISSOURI STATE CERTIFICATE OF AUTHORITY #001244
03/12/18
SSC ENGINEERING, INC.
STRUCTURAL ENGINEER
MISSOURI STATE CERTIFICATE OF AUTHORITY #001244

MECHANICAL
DETAILS

MISSOURI SOYBEAN INNOVATION CENTER
NEW OFFICE BUILDING
734 S. COUNTRY CLUB DRIVE
JEFFERSON CITY, MISSOURI

PROJECT NO. 1613
DATE: Sept. 12, 2018

M0.3

2017349 - BID/PERMIT SET - 09-12-18