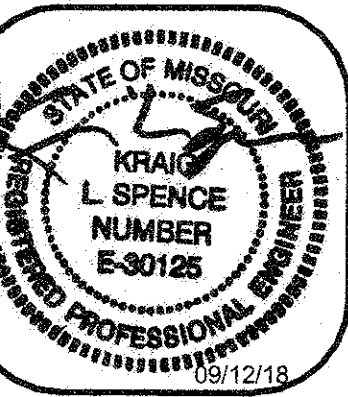


MECHANICAL GENERAL NOTES:

1. REFER TO SHEET M0.1 FOR SYMBOLS, ABBREVIATIONS AND GENERAL CONSTRUCTION NOTES.

MECHANICAL KEYED NOTES:

- 1 BOTTOM OF DUCT TO BE 14" 6" AFF.
- 2 CENTER OF DUCT TO BE 12" 8" AFF.
- 3 INSTALL RETURN GRILLE 9" AFF.
- 4 CONNECT TO RESIDENTIAL HOOD.
- 5 TRANSFER SOUND DUCT WITH OPEN ENDS FACING UP. PROVIDE 1/2" LINER IN TRANSFER DUCT.
- 6 DO NOT ROUTE DUCT OVER THE TOP OF ELECTRICAL PANELS.
- 7 ROUTE DUCT TIGHT TO BOTTOM OF STRUCTURE.



Kraig L. Spence
E-30125

CENTRAL MISSOURI PROFESSIONAL SERVICES, INC.
MISSOURI STATE CERTIFICATE OF AUTHORITY #
CIVIL ENGINEER
SSC ENGINEERING, INC.
MISSOURI STATE CERTIFICATE OF AUTHORITY #001244
MECHANICAL/ELECTRICAL PLUMBING ENGINEER
MISSOURI STATE CERTIFICATE OF AUTHORITY #001244
STRUCTURAL ENGINEER
MISSOURI STATE CERTIFICATE OF AUTHORITY #001244



Missouri State Certificate of Authority # 000143
631 West Main Street
Jefferson City, Missouri
(573) 636-5000 phone

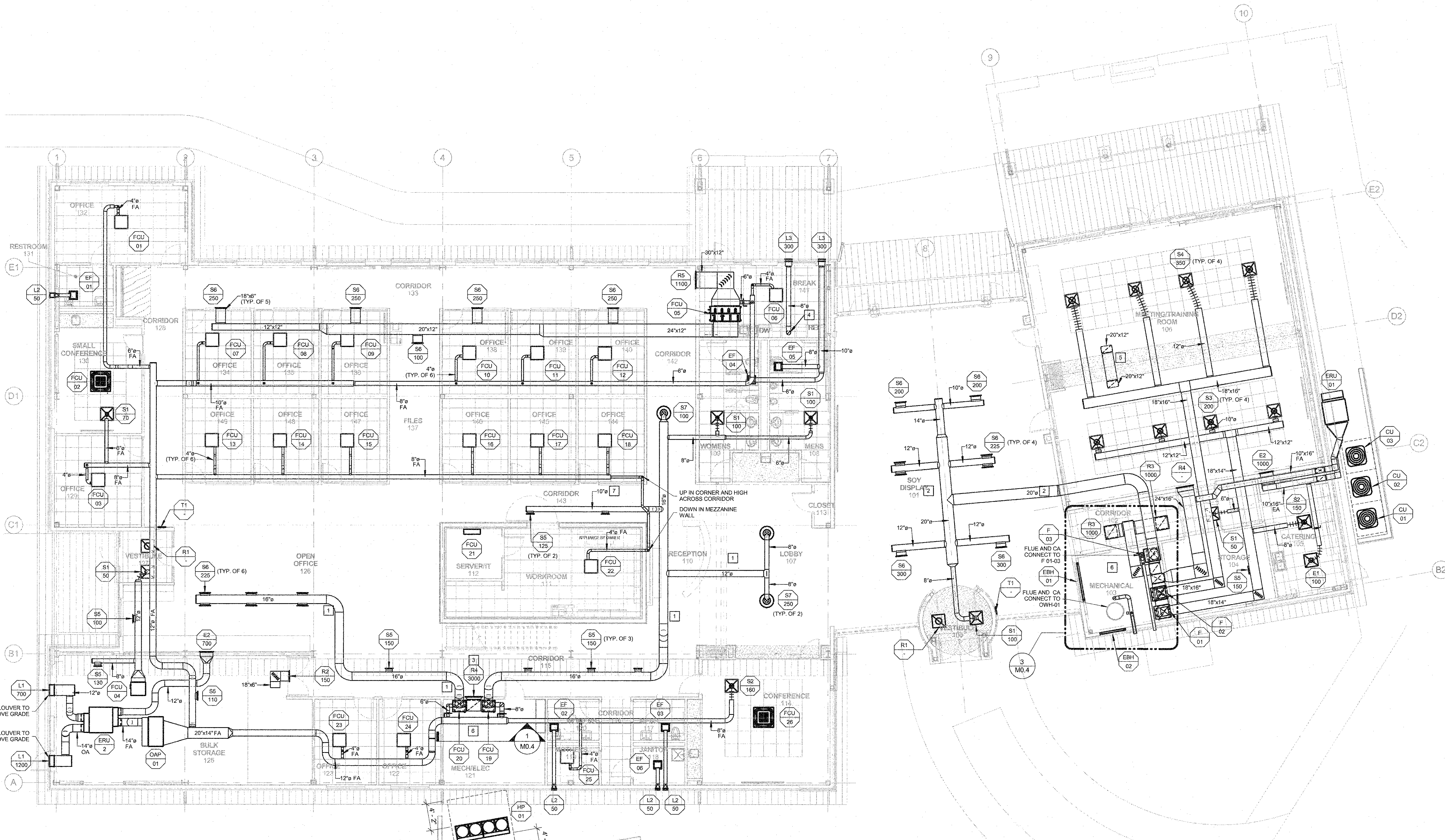
MECHANICAL
DUCTWORK PLAN

**MISSOURI SOYBEAN INNOVATION CENTER
NEW OFFICE BUILDING**
734 S. COUNTRY CLUB DRIVE
JEFFERSON CITY, MISSOURI

PROJECT NO. 1613
DATE: Sept. 12, 2018

M1.1

2017349 - BID/PERMIT SET - 09-12-18



MECHANICAL DUCTWORK PLAN
SCALE: 1/8" = 1'-0"
NORTH

The Seal and Signature shall only be used on the Document to which they are Affixed, and Expressly Decline any other use, including but not limited to, reproduction, alteration, or use for any other purpose. This is intended to be used for any part or parts of this Document. Copyright © 2018 by SSC Engineering, Inc.