

Craig L. Spence
E-30125

CENTRAL MISSOURI PROFESSIONAL SERVICES, INC.
MISSOURI STATE CERTIFICATE OF AUTHORITY #
SSC ENGINEERING, INC.
MISSOURI STATE CERTIFICATE OF AUTHORITY #001244
MECHANICAL/ELECTRICAL/PLUMBING ENGINEER
SSC ENGINEERS, INC.
MISSOURI STATE CERTIFICATE OF AUTHORITY #001244
STRUCTURAL ENGINEER



Missouri State Certificate of Authority # 000143
631 West Main Street
Jefferson City, Missouri
(573) 636-5000 phone

MECHANICAL PIPING PLAN

MISSOURI SOYBEAN INNOVATION CENTER
NEW OFFICE BUILDING
734 S. COUNTRY CLUB DRIVE
JEFFERSON CITY, MISSOURI

PROJECT NO. 1613
DATE: Sept. 12, 2018

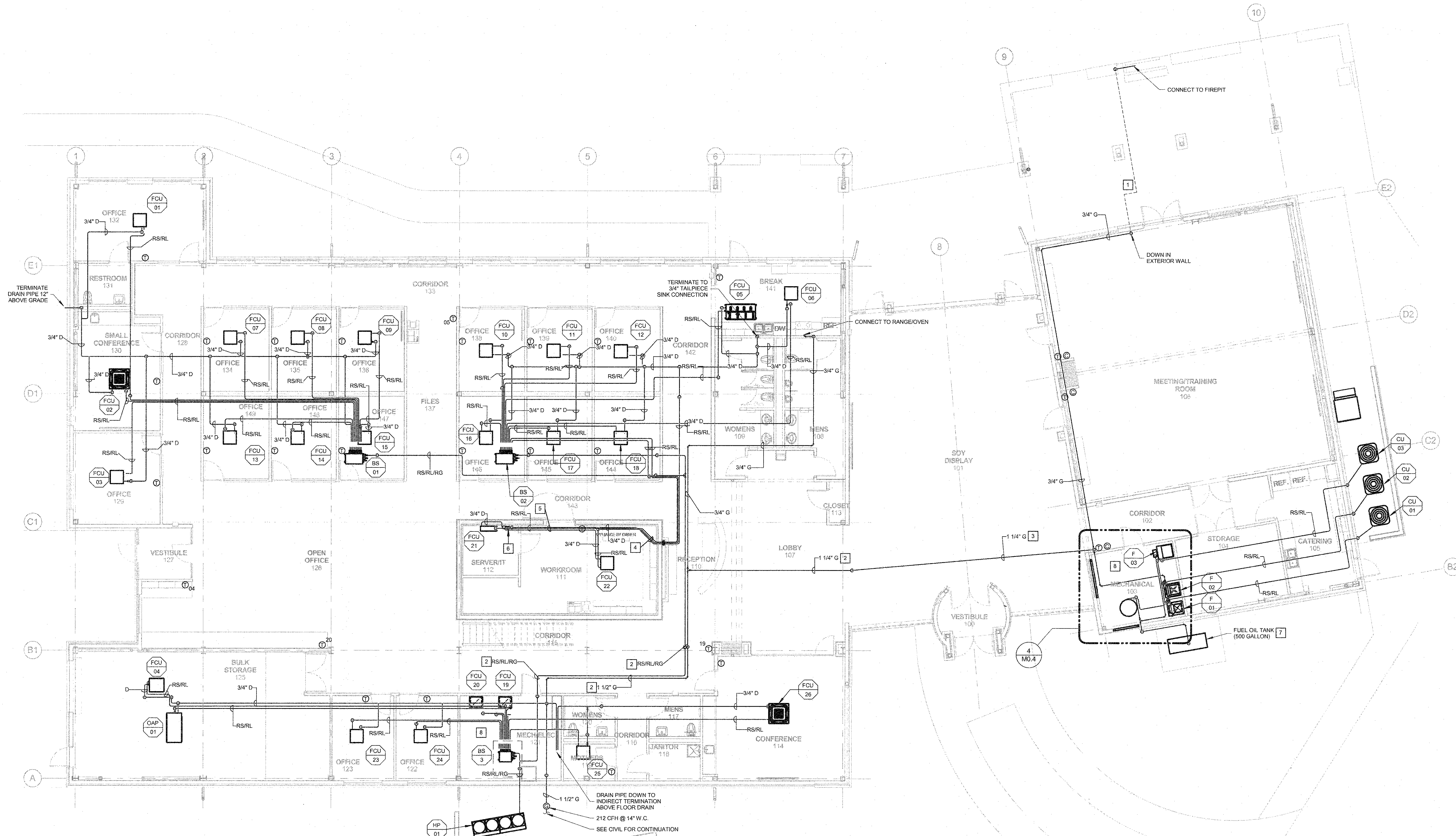
M2.1

MECHANICAL GENERAL NOTES:

1. REFER TO SHEET M0.1 FOR SYMBOLS, ABBREVIATIONS AND GENERAL CONSTRUCTION NOTES.

MECHANICAL KEYED NOTES:

- 1 RUN GAS UNDERSLAB TO FIREPIT.
- 2 ROUTE PIPE HIGH, OVER TOP OF SUPPLY DUCT FROM FCU-19 TO SHIELD FROM VIEW.
- 3 ROUTE PIPE HIGH, COORDINATE WITH PLUMBING PIPES.
- 4 COORDINATE REFRIGERANT AND DRAIN PIPE ROUTE IN CHASE TO CEILING OF WORKROOM.
- 5 RUN BELOW MEZZANINE FLOOR AND ABOVE WORKROOM CEILING.
- 6 CONDENSATE PUMP SHALL BE LITTLE GIANT, MODEL VCMX-20, 115 V OR EQUIVALENT. PROVIDE 10 GPH AT 20' HEAD. INCLUDE CHECK VALVE AND OVERFLOW DETECTION SWITCH. WIRE OVERFLOW SWITCH TO SHUT OFF FCU-21 AND FCU-22. MOUNT WITH BRACKET HIGH TO THE WALL.
- 7 CONTRACTOR SHALL FILL TANK HALF FULL WITH B5 BIODIESEL FUEL OIL BEFORE TURNING OVER TO OWNER.
- 8 DO NOT ROUTE PIPING OVER THE TOP OF ELECTRICAL PANELS.



MECHANICAL PIPING PLAN
SCALE: 1/8" = 1'-0"
NORTH

The Seal and Signature apply only to the Document to which they are Affixed, and Exonishak Disclaim any Responsibility for all other Plans, Specifications, Estimates, or any other Documents. This document is intended to be used for any part or parts of the project. Copyright © 2018 by SSC Engineering, Inc.

2017349 - BID/PERMIT SET - 09-12-18