

Craig L. Spence
E-30125

CENTRAL MISSOURI PROFESSIONAL SERVICES, INC.
MISSOURI STATE CERTIFICATE OF AUTHORITY #
SSC ENGINEERING, INC.
MECHANICAL/ELECTRICAL/PLUMBING ENGINEER
MISSOURI STATE CERTIFICATE OF AUTHORITY #001244
SSC ENGINEERING, INC.
MISSOURI STATE CERTIFICATE OF AUTHORITY #001244



Missouri State Certificate
of Authority # 000143
631 West Main Street
Jefferson City, Missouri
(573) 636-5000 phone

PLUMBING PLAN

MISSOURI SOYBEAN INNOVATION CENTER
NEW OFFICE BUILDING
734 S. COUNTRY CLUB DRIVE
JEFFERSON CITY, MISSOURI

PROJECT NO. 1613
DATE: Sept. 12, 2018

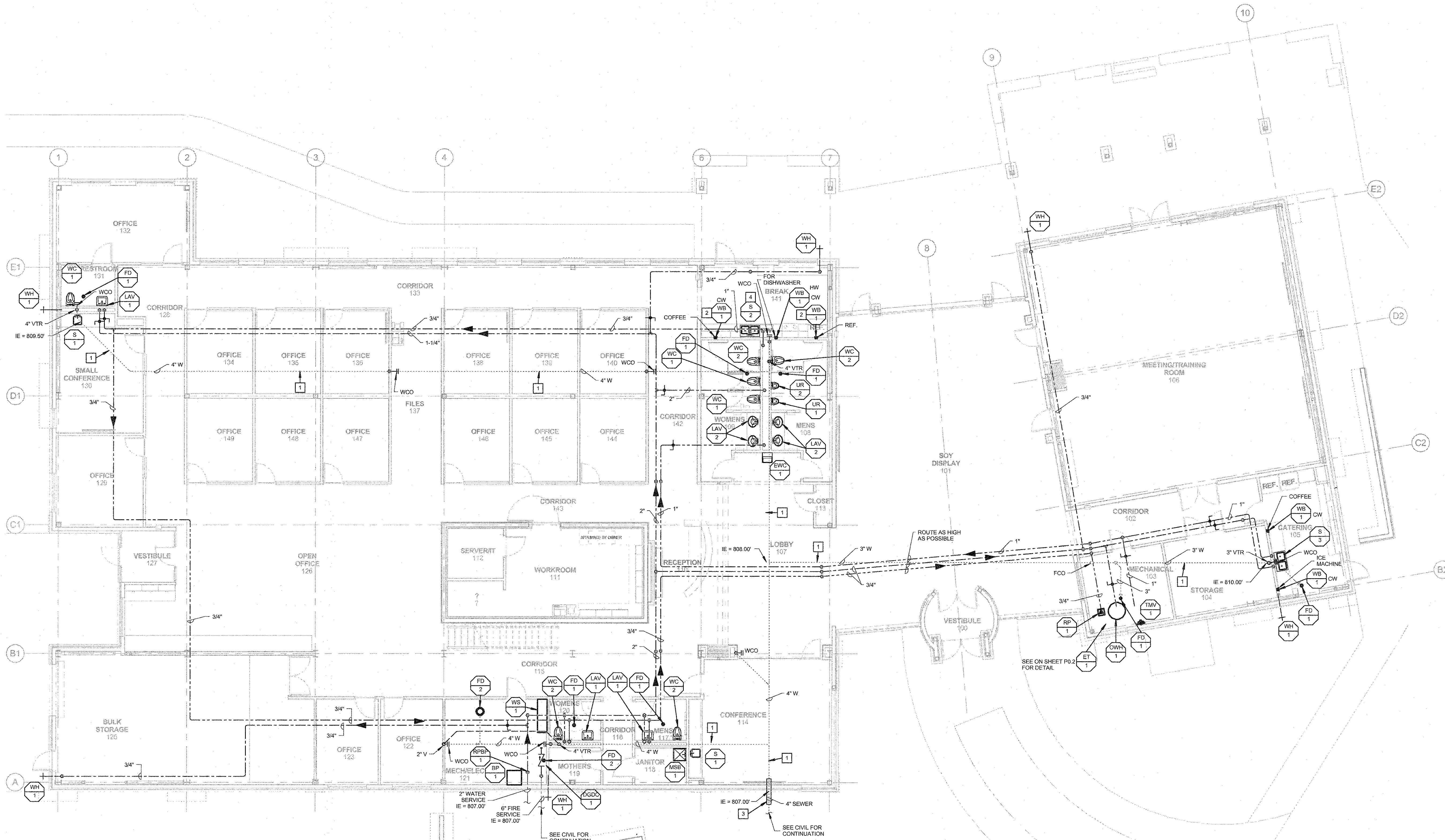
P1.1

PLUMBING GENERAL NOTES:

1. REFER TO SHEET P0.1 FOR SYMBOLS AND GENERAL NOTES.

PLUMBING KEYED NOTES:

- 1 SANITARY SEWER BELOW SLAB.
- 2 PROVIDE ONE WATER BOX FOR REFRIGERATOR. PROVIDE SECOND WATER BOX FOR COFFEE MAKER.
- 3 ENCASE SEWER PIPE WITH 6" OF LEAN CONCRETE ON ALL SIDES 48" LONG.
- 4 1-1/2" TAIL PIECE WITH 3/4" SIDE INLET FOR CONDENSATE DRAIN.



PLUMBING PLAN
SCALE: 1/8" = 1'-0"
NORTH
FFE = 811.00'

This Book and Specifications are subject to the Documents to which they are attached, and to any amendments thereto. Responsibility for all other Plans, Specifications, Estimates, intended to be used for any part or parts of the individual or professional project. Copyright © 2018 by SSC Engineering, Inc.

2017349 - BID/PERMIT SET - 09-12-18