

Joseph D Meyer
PE-2016011697
EXP: 12-31-2018

CENTRAL MISSOURI PROFESSIONAL SERVICES, INC.
MISSOURI STATE CERTIFICATE OF AUTHORITY #
SSC ENGINEERING, INC.
MISSOURI STATE CERTIFICATE OF AUTHORITY #001244
SSC ENGINEERING, INC.
MISSOURI STATE CERTIFICATE OF AUTHORITY #001244
STRUCTURAL ENGINEER
MISSOURI STATE CERTIFICATE OF AUTHORITY #001244

The Architects Alliance inc.
Missouri State Certificate of Authority # 000143
631 West Main Street
Jefferson City, Missouri
(573) 636-5000 phone

FIRE PROTECTION PLAN

**MISSOURI SOYBEAN INNOVATION CENTER
NEW OFFICE BUILDING**
734 S. COUNTRY CLUB DRIVE
JEFFERSON CITY, MISSOURI

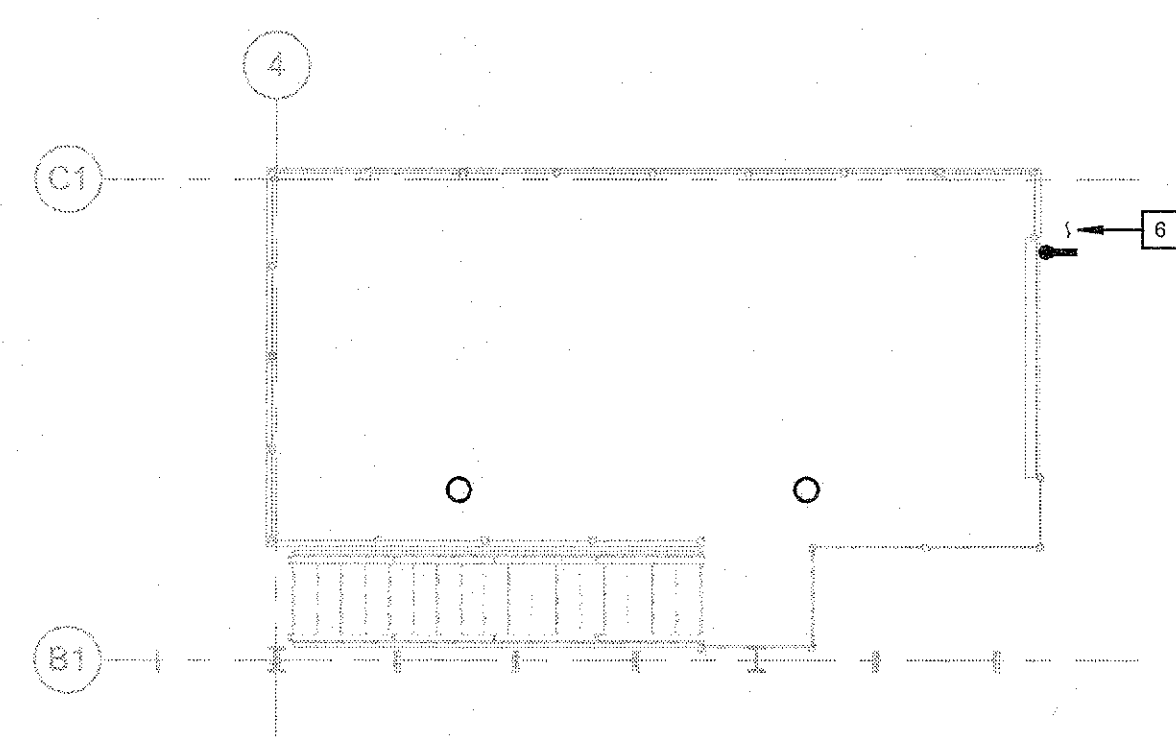
PROJECT NO. 1613
DATE: Sept. 12, 2016
FP1.1

FIRE PROTECTION GENERAL NOTES:

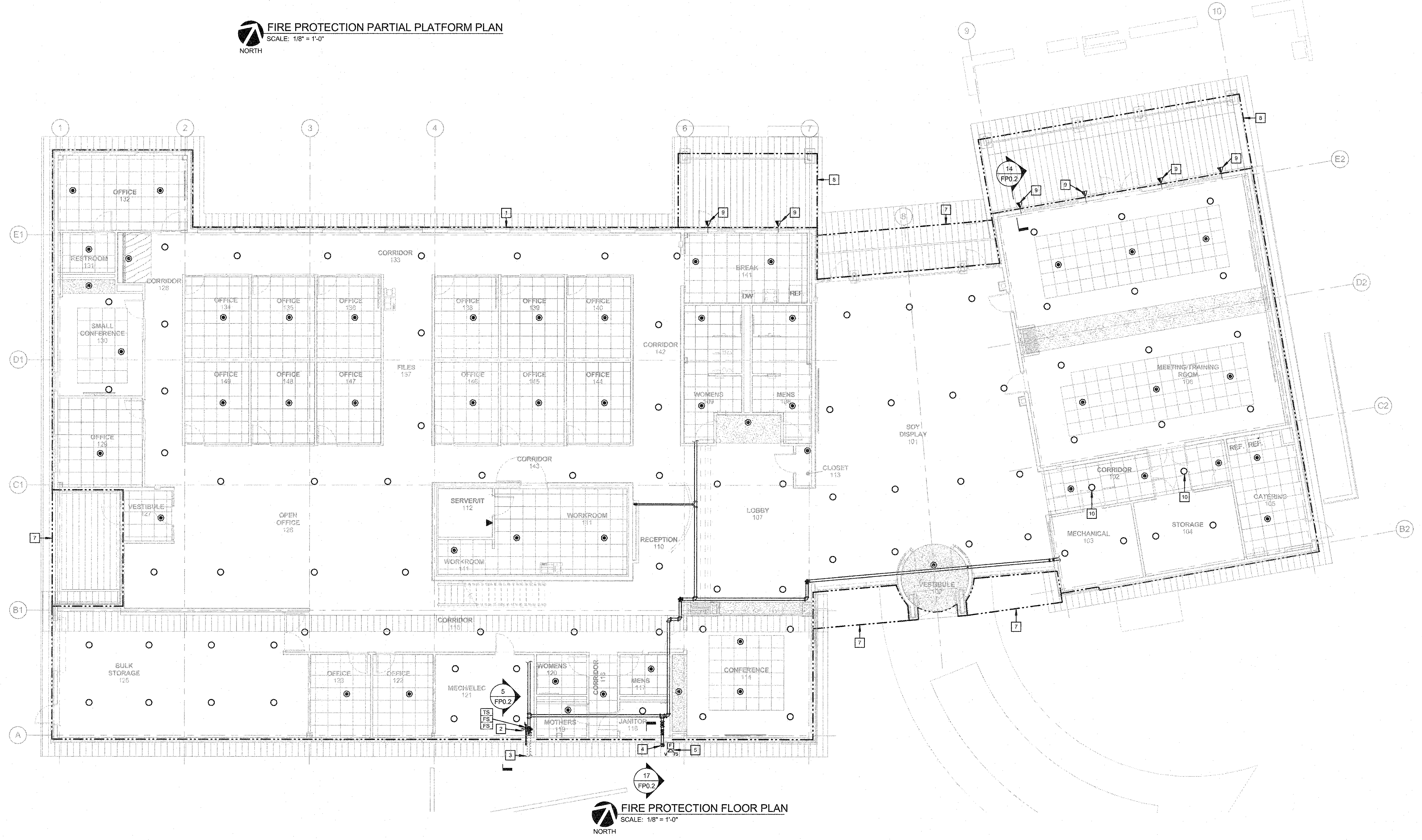
1. REFER TO SHEET FP0.1 FOR SYMBOLS, ABBREVIATIONS AND GENERAL CONSTRUCTION NOTES.

FIRE PROTECTION KEYED NOTES:

- 1 PROVIDE THE DESIGN AND INSTALLATION OF A COMPLETE AND FUNCTIONAL AUTOMATIC WET-PIPE FIRE PROTECTION SYSTEM FOR AREA INDICATED.
- 2 FIRE SPRINKLER RISER ASSEMBLY. REFER TO "FIRE SPRINKLER RISER ASSEMBLY" DETAIL FOR FURTHER REQUIREMENTS.
- 3 PROVIDE A NEW 6" FIRE SERVICE MAIN BELOW GRADE. REFER TO CIVIL DRAWINGS FOR CONTINUATION.
- 4 PROVIDE SIAMESE FIRE DEPARTMENT CONNECTION. PROVIDE AND SEAL PIPE SLEEVE AT ALL PENETRATIONS THROUGH WALL. PENETRATION(S) SHALL BE WATER TIGHT.
- 5 PROVIDE A WEATHER RESISTANT ELECTRIC BELL FOR WATERFLOW NOTIFICATION. PROVIDE EQUIPMENT AND CONNECTIONS REQUIRED TO CONNECT TO FIRE ALARM SYSTEM. FIRE ALARM CONTRACTOR TO CONNECT TO FIRE ALARM SYSTEM.
- 6 ROUTE FIRE PROTECTION MAIN FROM LOWER LEVEL.
- 7 SPRINKLER PROTECTION NOT REQUIRED FOR NON-COMBUSTIBLE/LIMITED COMBUSTIBLE/FIRE-RETARDANT TREATED CANOPY WITHOUT COMBUSTIBLE STORAGE BENEATH, IN ACCORDANCE WITH NFPA 13 SECTION(S) 8.15.7.2 & 8.15.7.5 (2013 EDITION).
- 8 PROVIDE DRY-SIDEWALL SPRINKLER(S) FOR PROTECTION BENEATH CANOPY/DECK DUE TO PRESENCE OF COMBUSTIBLES.
- 9 PROVIDE DRY-SIDEWALL SPRINKLER BENEATH OVERHANG. REFER TO SECTION FOR DETAIL.
- 10 PROVIDE UPRIGHT SPRINKLERS ABOVE TILED CEILING IN ACCORDANCE WITH NFPA 13 SECTION 8.15.23 (2013 EDITION).



FIRE PROTECTION PARTIAL PLATFORM PLAN
SCALE: 1/8" = 1'-0"
NORTH



FIRE PROTECTION FLOOR PLAN
SCALE: 1/8" = 1'-0"
NORTH

The Seal and Signature apply only to the Document to which they are attached. The Architect shall be responsible for all other Plans, Specifications, Estimates, Reports, or other Documents or Instruments relating to or forming part of the Architectural or Engineering Project. Copyright © 2016 by SSC Engineering, Inc.

2017349 - BID/PERMIT SET - 09-12-18