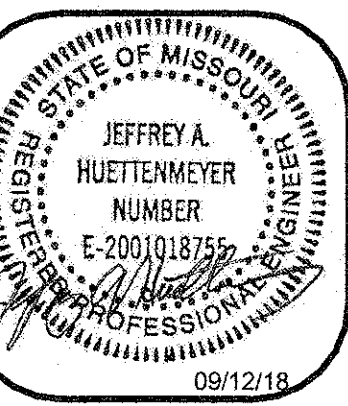


ELECTRICAL GENERAL NOTES:

1. REFER TO SHEET E0.1 FOR SYMBOLS, ABBREVIATIONS AND GENERAL CONSTRUCTION NOTES.
2. EC SHALL FIELD VERIFY EXISTING POLES, MANHOLES, SPARE CONDUIT, RIGHTS-OF-WAY, UTILITIES, AND BUILDING LOCATIONS PRIOR TO STARTING WORK. NOTIFY ENGINEER IMMEDIATELY IF DISCREPANCIES EXIST.
3. PROVIDE 1800# MULETAPE IN ALL NEW CONDUITS, INNERDUCTS AND IN ALL CONDUITS FOR NEW CABLE RUNS.
4. EC SHALL COORDINATE EXACT LOCATIONS, REQUIREMENTS, METERING AND TERMINATIONS WITH UTILITY PROVIDERS PRIOR TO BID.
5. COORDINATE ALL UNDERGROUND ELECTRICAL WORK AND UTILITY TIE-INS WITH UTILITY PROVIDERS AND WORK OF OTHER TRADES.
6. UNDERGROUND FACILITY STRUCTURES AND UTILITIES HAVE BEEN PLOTTED FROM AVAILABLE SURVEYS AND RECORDED INFORMATION. THEREFORE, THEIR LOCATIONS MUST BE CONSIDERED APPROXIMATE ONLY. VERIFICATION OF LOCATION OF ALL UNDERGROUND STRUCTURES AND FACILITIES EITHER SHOWN OR NOT SHOWN ON THESE PLANS, SHALL BE THE RESPONSIBILITY OF THE CONTRACTOR.
7. ALL IN-GROUND CONDUITS SHALL BE 1" MINIMUM, SCHEDULE 40 PVC, UNLESS NOTED OTHERWISE.
8. ALL UNDERGROUND AND EXTERIOR CONDUCTORS SHALL BE TYPE "XHHW-2"

ELECTRICAL KEYED NOTES:

- 1 NEW PRIMARY ELECTRIC BY AMEREN. EC SHALL VERIFY ALL REQUIREMENTS WITH AMEREN PRIOR TO ANY WORK. REFER TO ONE LINE ON E0.2 FOR RESPONSIBILITY OF WORK
- 2 PROVIDE CONCRETE PAD FOR TRANSFORMER. REFER TO DETAILS ON SHEET E0.6.
- 3 PROVIDE 4" SCH 40 PVC CONDUIT 48" BELOW GRADE FOR MEDIUM VOLTAGE CONDUCTORS BY AMEREN. REFER TO DETAIL FOR INSTALLATION REQUIREMENTS. ROUTE IN TRENCH AND COORDINATE EXACT LOCATION AND REQUIREMENTS WITH AMEREN.
- 4 PROVIDE 2" PVC SCHEDULE 40 CONDUIT WITH PULL STRING AND CAPPED ON BOTH ENDS UNDERNEATH ROADWAY AS INDICATED. INSTALL 36" BELOW FINISHED GRADE.
- 5 PROVIDE UNDERGROUND SERVICE ENTRANCE FEEDER PER E0.3 IN PVC SCHEDULE 40 CONDUITS IN DUCT BANK SIZED PER NEC 8310.2. INSTALL PER DETAIL ON SHEET E0.6.
- 6 PROVIDE (1) 2" SCH 40 PVC CONDUIT WITH PULL TAPE FROM SERVER ROOM TO PROPERTY LINE FOR GATV UTILITY SERVICE. EC SHALL VERIFY ALL REQUIREMENTS WITH UTILITY COMPANY AND COORDINATE ALL OTHER REQUIREMENTS WITH APPLICABLE TRADES PRIOR TO ROUGH-IN.
- 7 PROVIDE LUMINARIES FOR FLAGPOLE LIGHTING. REFER TO FLOOD LIGHT DETAIL ON SHEET E0.6.
- 8 PROVIDE 2" PVC SCHEDULE 40 CONDUIT WITH PULL STRING, CAPPED BELOW GRADE AT NORTH END AND STUBBED UP INTO PANEL P2 FOR FUTURE ALTERNATIVE ENERGY SOURCE. PROVIDE 1" PVC SCHEDULE 40 CONDUIT WITH PULL STRING CAPPED AT BOTH ENDS NEXT TO 2" C AND STUBBED UP 6" AFF OF MECHANICAL 103 FOR CONTROLS.
- 9 PROVIDE THREE (3) 4" SCHEDULE 40 PVC CONDUITS FROM THE TTB IN THE SERVER ROOM TO THE BUILDING EXTERIOR FOR LOCAL TELEPHONE UTILITY COMPANY AS SHOWN AND AVOID UNDERGROUND PIPING. EC SHALL TERMINATE TO A PULLBOX EQUIVALENT TO QUAZITE "PG2438BA18" WITH "PG2438CA92" COVER. EC SHALL VERIFY ALL REQUIREMENTS WITH THE UTILITY COMPANY AND COORDINATE ALL OTHER REQUIREMENTS WITH APPLICABLE TRADES PRIOR TO ROUGH-IN.
- 10 INSTALL CONCRETE POLE BASE SUCH THAT FACE OF BASE IS 18" BEHIND FACE OF CURB.
- 11 EXISTING OVERHEAD POWER POLE TO BE REMOVED BY AMEREN.
- 12 INSTALL LUMINAIRES 6' BACK FROM FACE OF SIGN, EVENLY SPACED TO ILLUMINATE SIGN. INSTALL ON CONCRETE PIERS PER DETAIL ON E0.6.
- 13 PROVIDE (2) 1" CONDUITS FOR FUTURE SIGN.



Jeffrey A. Huettnermeyer
PE-2001018755

CENTRAL MISSOURI PROFESSIONAL SERVICES, INC.
MISSOURI STATE CERTIFICATE OF AUTHORITY #
CIVIL ENGINEER
SSC ENGINEERING, INC.
MECHANICAL/ELECTRICAL/PLUMBING ENGINEER
MISSOURI STATE CERTIFICATE OF AUTHORITY #001244
SSC ENGINEERING, INC.
STRUCTURAL ENGINEER
MISSOURI STATE CERTIFICATE OF AUTHORITY #001244



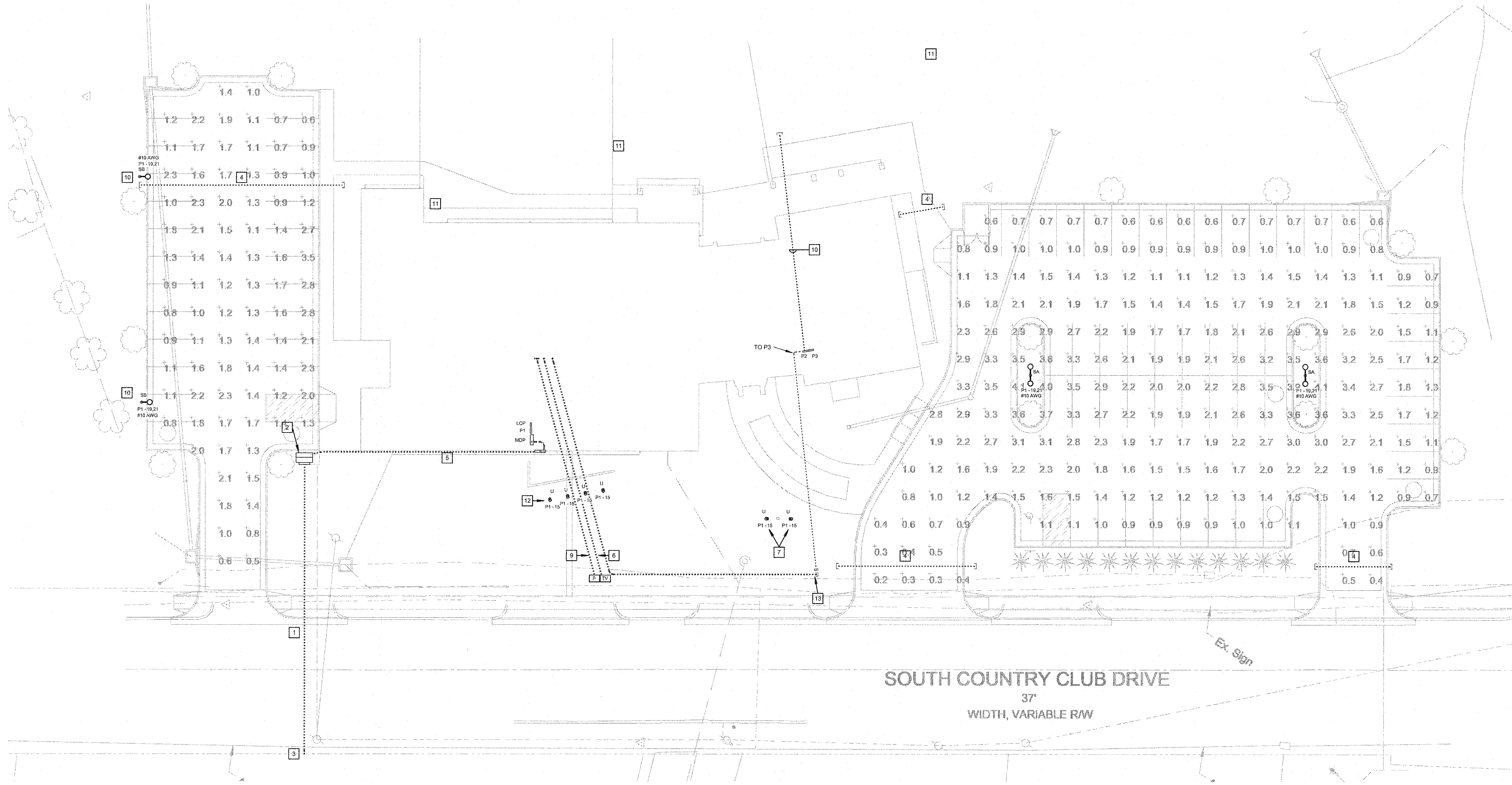
Missouri State Certificate of Authority # 000143
631 West Main Street
Jefferson City, Missouri
(573) 636-5000 phone

ELECTRICAL SITE PLAN

MISSOURI SOYBEAN INNOVATION CENTER
NEW OFFICE BUILDING
734 S. COUNTRY CLUB DRIVE
JEFFERSON CITY, MISSOURI

PROJECT NO. 1613
DATE: Sept. 12, 2018

E0.2



SOUTH COUNTRY CLUB DRIVE
37'
WIDTH, VARIABLE R/W

ELECTRICAL SITE PLAN
SCALE: 1" = 20'-0"
NORTH

The Seal and Signature apply only to the Document to which they are Affixed, and Electronic Documents. Records, or other Documents or instruments relating to or intended to be used for any part or parts of the Document, shall not be deemed to be certified by this Seal and Signature. Copyright © 2018 by SSC Engineering, Inc.

2017349 - BID/PERMIT SET - 09-12-18