

Jeffrey A. Huettnermeyer
PE-2001018755

CENTRAL MISSOURI PROFESSIONAL SERVICES, INC.
MISSOURI STATE CERTIFICATE OF AUTHORITY #
CIVIL ENGINEER
SSC ENGINEERING, INC.
MECHANICAL/ELECTRICAL/PLUMBING ENGINEER
MISSOURI STATE CERTIFICATE OF AUTHORITY #001244
SSC ENGINEERING, INC.
STRUCTURAL ENGINEER
MISSOURI STATE CERTIFICATE OF AUTHORITY #001244



Missouri State Certificate of Authority # 000143
631 West Main Street
Jefferson City, Missouri
(573) 636-5000 phone

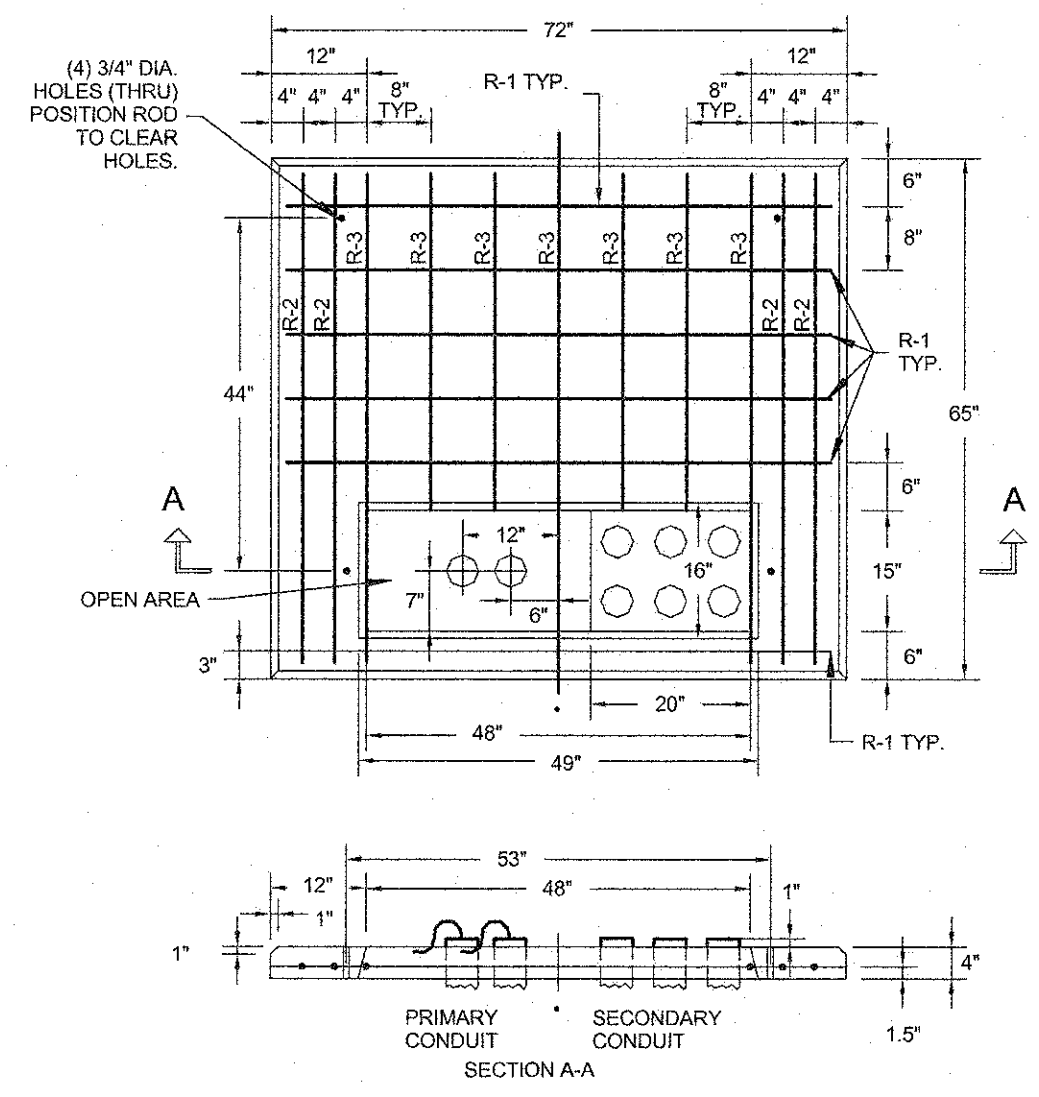
ELECTRICAL DETAILS

MISSOURI SOYBEAN INNOVATION CENTER
NEW OFFICE BUILDING
734 S. COUNTRY CLUB DRIVE
JEFFERSON CITY, MISSOURI

PROJECT NO. 1613
DATE: Sept. 12, 2016

E0.6

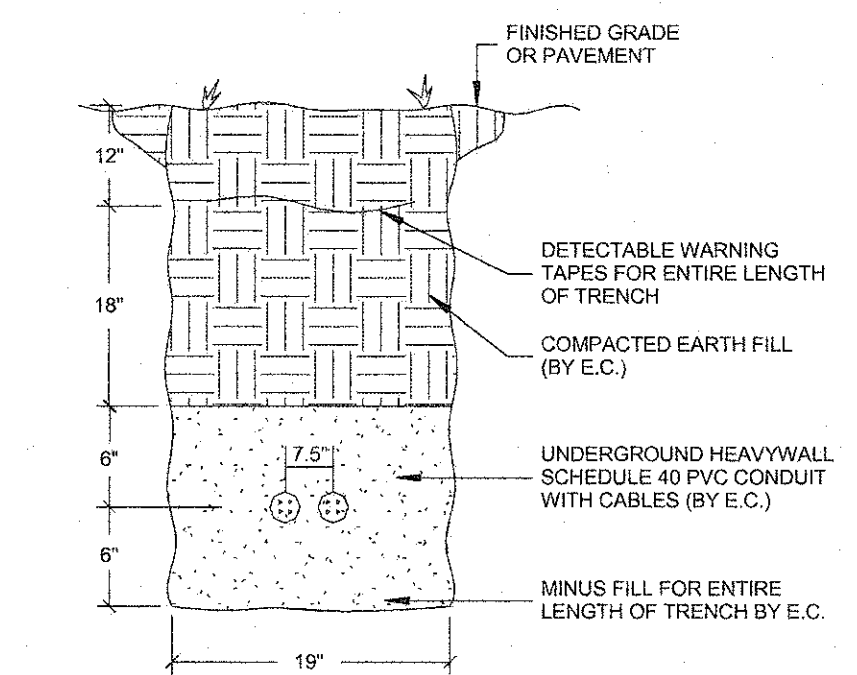
2017349 - BID/PERMIT SET - 09-12-18



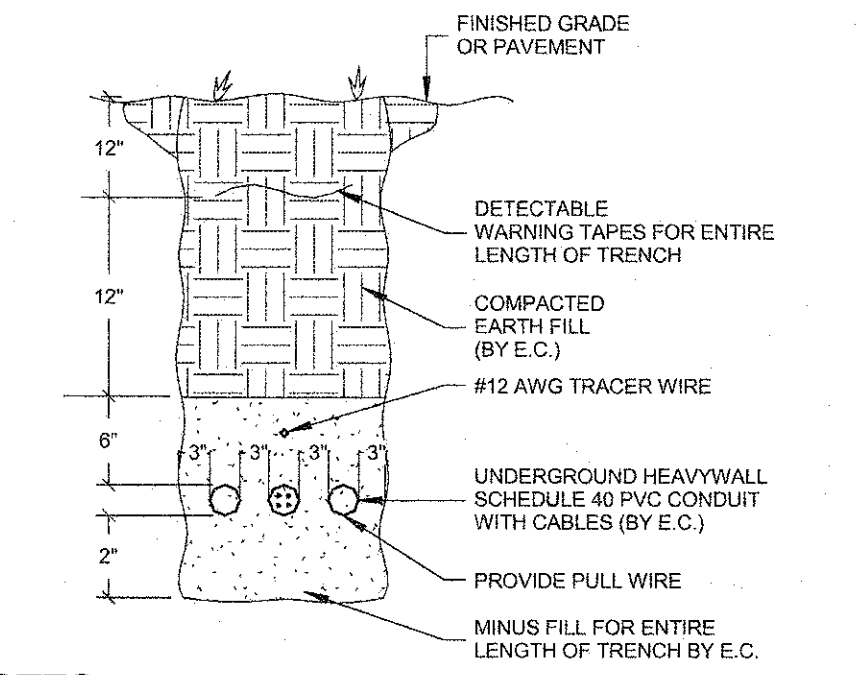
REINFORCING SCHEDULE			
MARK	NO REQD	SIZE	LENGTH
R-1	6	#4	5'-8"
R-2	4	#4	5'-1"
R-3	7	#4	3'-0"

- INSTRUCTIONS:
- ALL CONDUITS SHALL BE RIGID PVC SCHEDULE 40.
 - SECONDARY CONDUITS SHALL BE SYMMETRICALLY LOCATED WITHIN 15'x20' AREA.
 - BENDS TO BE CAPPED OR TAPED ON ENDS WITH PULLING TAPE STICKING OUT.
 - PROPER COMPACTION OF BACKFILL IS IMPORTANT TO PREVENT SETTLING. BACKFILL WITH LIMESTONE SCREENINGS.
 - FOR RADIAL FED TRANSFORMERS, INSTALL PRIMARY CONDUIT IN THE LEFT POSITION (SHOWN AS A SOLID CIRCLE).

3 TRANSFORMER CAST IN PLACE PAD - AMEREN
NOT TO SCALE



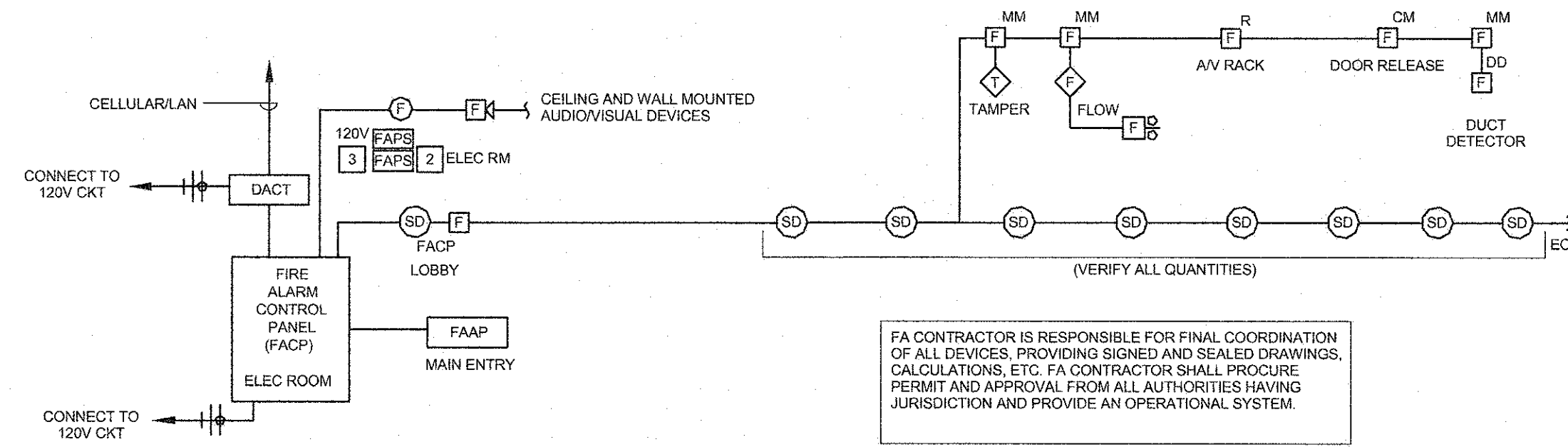
- NOTES:
- ALL EXCAVATION IN ELECTRICAL ONLY TRENCHES BY E.C.
 - COORDINATE ALL WORK WITH UTILITY COMPANIES & APPLICABLE TRADES.
 - EXCAVATED MATERIAL SHALL BE PLACED A MINIMUM OF 2' FROM BOTH EDGES OF THE TRENCH.
- TRENCH DETAIL FOR CONDUIT SECONDARY POWER CABLES
2 NOT TO SCALE



- NOTES:
- ALL EXCAVATION IN ELECTRICAL ONLY TRENCHES BY E.C.
 - COORDINATE ALL WORK WITH UTILITY COMPANIES.
 - EXCAVATED MATERIAL SHALL BE PLACED A MINIMUM OF 2' FROM BOTH EDGES OF THE TRENCH.
 - EDGES OF TRENCH SHALL BE A MIN OF 36" FROM EDGE OF WATER, GAS OR SEWER PIPES.
- TRENCH DETAIL FOR TELEPHONE AND CABLE TV CONDUITS
1 NOT TO SCALE

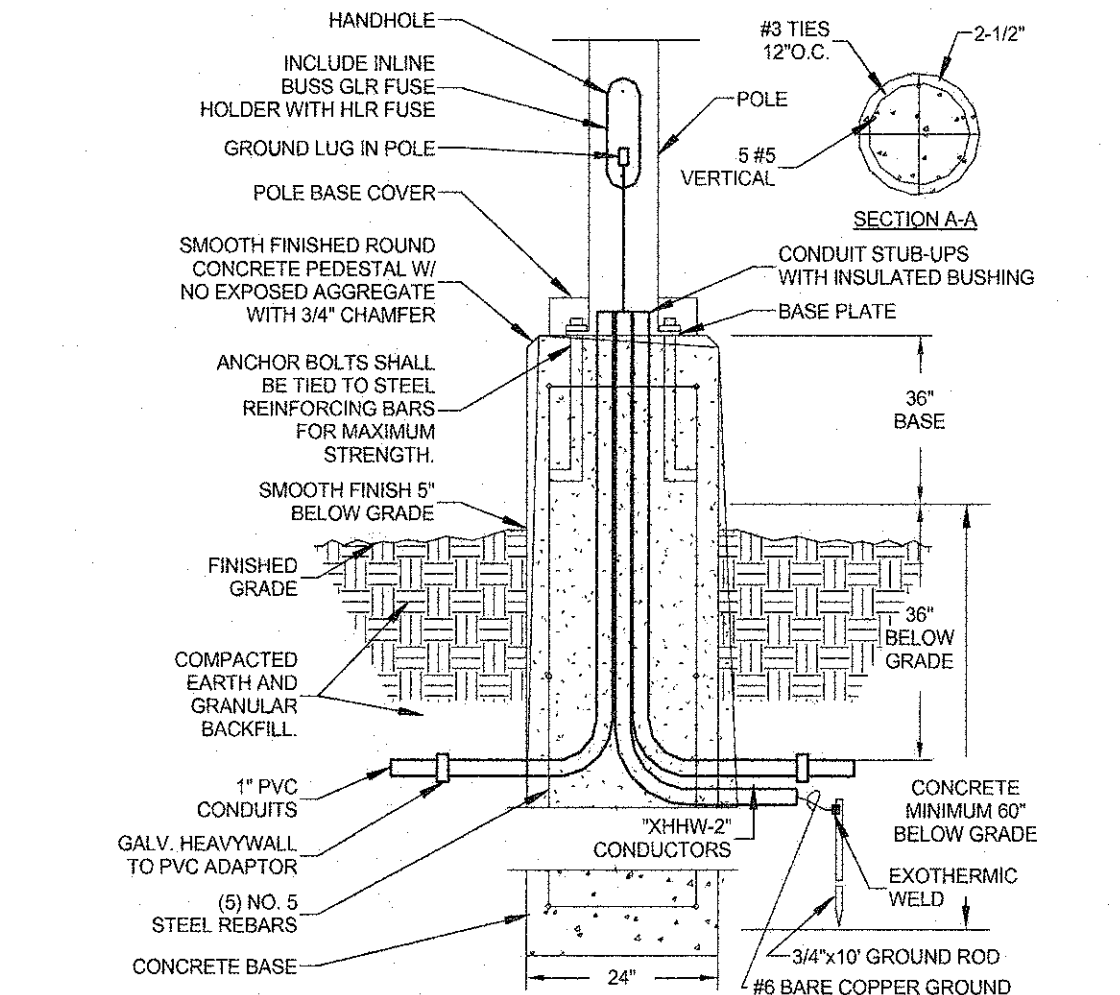
	ANNUNCIATES ALARM SIGNAL AT FIRE ALARM CONTROL PANEL(S)	ANNUNCIATES SUPERVISORY SIGNAL AT FIRE ALARM CONTROL PANEL(S)	ANNUNCIATES TROUBLE SIGNAL AT FIRE ALARM CONTROL PANEL(S)	TRANSMITS ALARM SIGNAL TO SUPERVISING STATION	TRANSMITS SUPERVISORY SIGNAL TO SUPERVISING STATION	TRANSMITS TROUBLE SIGNAL TO SUPERVISING STATION	ACTIVATES AUDIOVISUAL NOTIFICATION APPLIANCES (INCLUDING RESIDENT UNITS)	ACTIVATES WATERFLOW ALARM	SHUT DOWN ASSOCIATED HVAC UNIT(S)	CLOSE ASSOCIATED SMOKE OR FIRE-SMOKE DAMPER(S)
SMOKE DETECTORS										
- AREA SMOKE DETECTORS	X			X			X			
- ELEC ROOMS / FACP / FAPS	X			X			X			
- DUCT MOUNTED		X		X				X	X	
MANUAL CONTROLS										
- MANUAL PULL STATION AT FACP / EXITS	X			X			X			
SPRINKLER SYSTEM										
- FLOW SWITCH		X		X			X	X		
- TAMPER SWITCH		X		X						
FIRE ALARM INTEGRITY										
- FIRE ALARM CONTROL PANEL LOSS OF POWER			X			X				
- CABLING LINE OPEN, SHORT OR GROUND CIRCUIT			X			X				

11 FIRE ALARM MATRIX
NOT TO SCALE

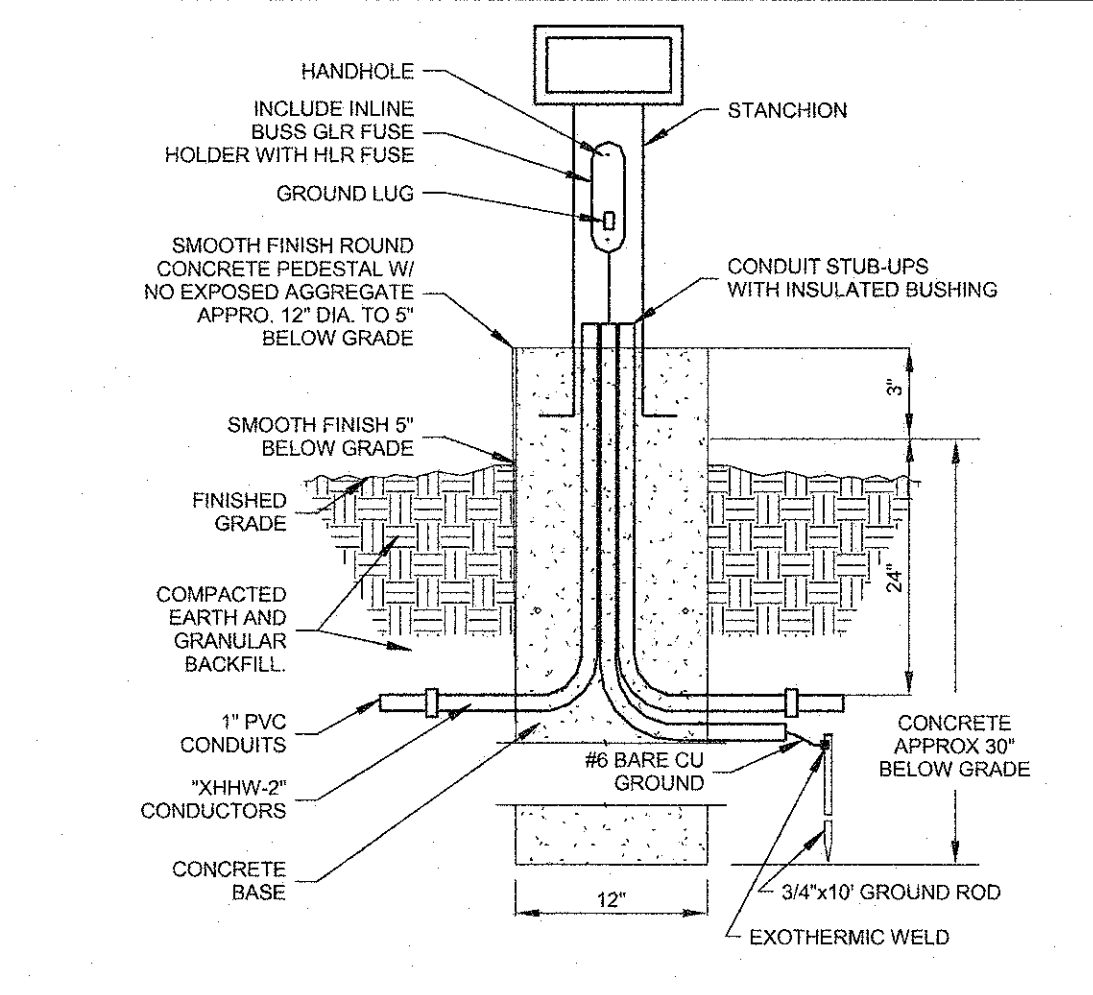


- NOTES:
- DEDICATED SET OF J-HOOKS FOR FIRE ALARM SYSTEM CABLES. DO NOT LAY ON CEILING. ALL CABLES SUBJECT TO DAMAGE AND BELOW 10' AFF SHALL BE IN CONDUIT.
 - THE FIRE ALARM SYSTEM VENDOR SHALL VERIFY AND PROVIDE THE NUMBER OF POWER SUPPLY UNITS REQUIRED FOR THE FIRE ALARM SYSTEM AUDIOVISUAL DEVICES. LOCATE IN ELECTRIC ROOM. EC SHALL PROVIDE EMERGENCY BATTERY POWER AS REQUIRED.
 - POWER SUPPLY PANEL QUANTITY SHALL BE DETERMINED BY F.A. CONTRACTOR. EC SHALL PROVIDE 120V POWER AS DIRECTED BY F.A. CONTRACTOR.
- FA CONTRACTOR IS RESPONSIBLE FOR FINAL COORDINATION OF ALL DEVICES, PROVIDING SIGNED AND SEALED DRAWINGS, CALCULATIONS, ETC. FA CONTRACTOR SHALL PROCURE PERMIT AND APPROVAL FROM ALL AUTHORITIES HAVING JURISDICTION AND PROVIDE AN OPERATIONAL SYSTEM.

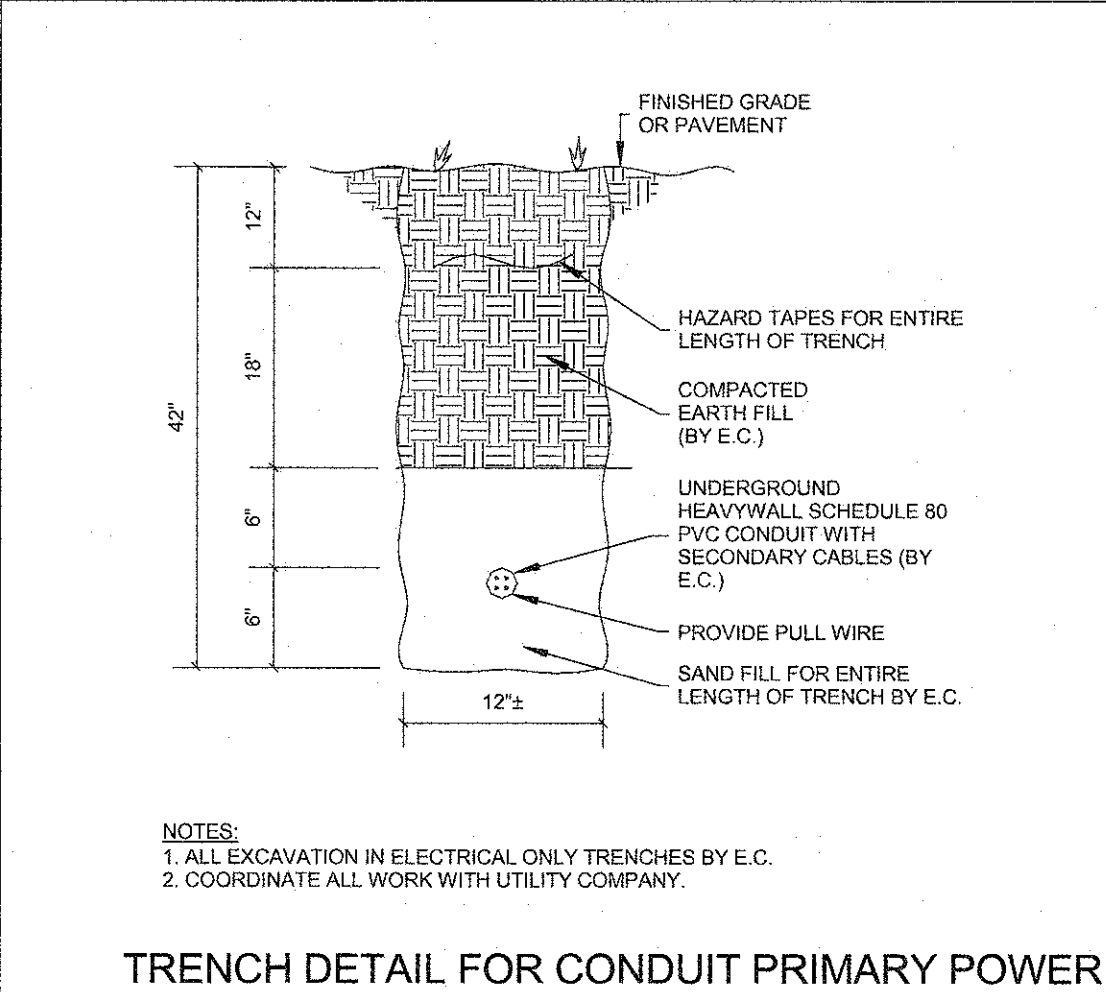
14 FIRE ALARM RISER DIAGRAM
NOT TO SCALE



13 LIGHTING POLE CONCRETE BASE DETAIL
NOT TO SCALE



9 FLOOD LIGHT CONCRETE BASE DETAIL
NOT TO SCALE



5 TRENCH DETAIL FOR CONDUIT PRIMARY POWER CABLES
NOT TO SCALE

This Seal and Signature apply only to the Document to which they are Affixed, and Expires December 31st, 2016. Responsibility for all other Plans, Specifications, Estimates, and Schedules shall remain with the Client. This Seal and Signature shall not be used for any other plans or documents. Copyright © 2015 by SSC Engineering, Inc.