

Jeffrey A. Huettnermeyer
PE-2001018755

CENTRAL MISSOURI PROFESSIONAL SERVICES, INC.
MISSOURI STATE CERTIFICATE OF AUTHORITY #
SSC ENGINEERING, INC.
MECHANICAL/ELECTRICAL/PLUMBING ENGINEER
MISSOURI STATE CERTIFICATE OF AUTHORITY #001244
SSC ENGINEERING, INC.
MISSOURI STATE CERTIFICATE OF AUTHORITY #001244



Missouri State Certificate of Authority # 000143
631 West Main Street
Jefferson City, Missouri
(573) 636-5000 phone

ELECTRICAL
POWER, VOICE &
DATA PLAN

MISSOURI SOYBEAN INNOVATION CENTER
NEW OFFICE BUILDING
734 S. COUNTRY CLUB DRIVE
JEFFERSON CITY, MISSOURI

PROJECT NO. 1613
DATE: Sept. 12, 2018

E2.1

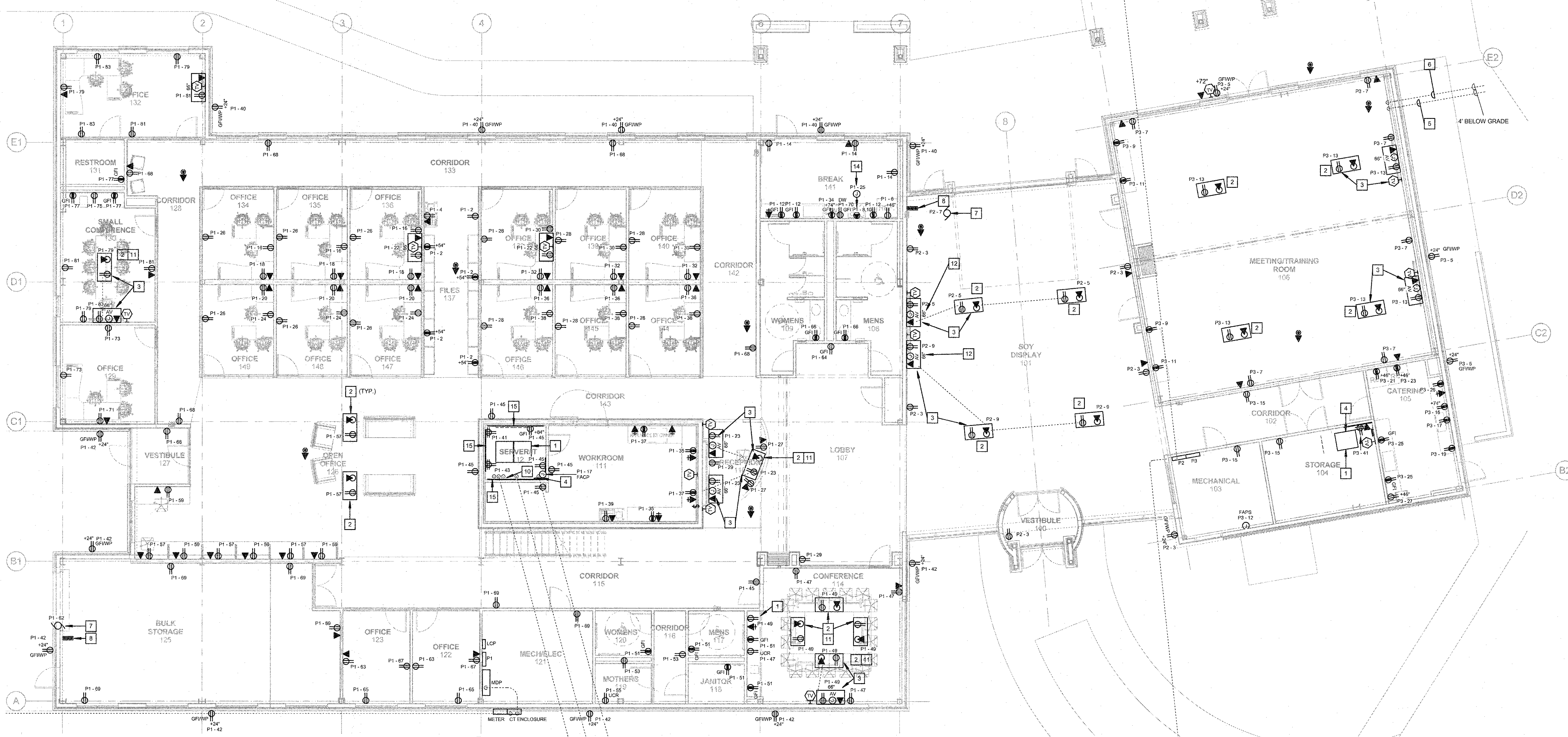
ELECTRICAL KEYED NOTES:

- 1 LOCATION OF DATA/VV RACK TO BE PROVIDED BY OWNERS VENDOR. COORDINATE LOCATION AND REQUIREMENTS.
- 2 PROVIDE LEGRAND RFB8E-0G FLOOR BOX OR EQUIVALENT. THIS IS TYPICAL OF ALL FLOOR BOXES.
- 3 PROVIDE CONDUIT FOR AV CONNECTIONS BETWEEN TV AND WALL AND FLOOR BOXES.
- 4 TMGB GROUND BUS WITH #4 AWG TO MDP GROUND SYSTEM.
- 5 STUB OUT NEAR CORNER OF PARKING LOT. 4" C FOR FUTURE PV POWER.
- 6 STUB OUT NEAR CORNER OF PARKING LOT. 2" C FOR FUTURE PV CONTROLS.
- 7 MOTOR FOR OVERHEAD DOOR.
- 8 PUSHBUTTONS TO OPERATE OVERHEAD DOOR.
- 9 CONNECTION FOR ELECTRICAL FIREPLACE.
- 10 FIBER SHALL BE RUN FROM HERE TO THE RACK IN STORAGE 104. PROVIDE 1-1/2" C WITH PULL TAPE.
- 11 COORDINATE EXACT LOCATION OF RECESSED FLOOR BOX TO BE BELOW TABLE.
- 12 PROVIDE TWO TV BOXES AT THIS LOCATION, ONE AT +40" AFF AND ONE AT +66" AFF. SEE ARCH ELEVATIONS FOR MORE INFORMATION.
- 13 SNAP SWITCH FOR FIREPLACE. MOUNT +46" AFF.
- 14 CONNECTION FOR UNDER CABINET HOOD. MOUNT +78" AFF.
- 15 PROVIDE 4" W X 8" H X 3/4" FRP PLYWOOD PAINTED WITH FRP PAINT ON ALL FACES AND EDGES (EXCEPT FRP STAMP) ON 3 WALLS OF SERVER IT 112 AS INDICATED.

ELECTRICAL GENERAL NOTES:

- 1 REFER TO SHEET E0.1 FOR SYMBOLS, ABBREVIATIONS AND GENERAL CONSTRUCTION NOTES.
- 2 ALL MECHANICAL, ELECTRICAL, PLUMBING, FIRE PROTECTION, AND HVAC WORK SHALL BE COORDINATED BY THE CONTRACTOR DOING THE WORK. ANY CORRECTIONS TO ANY OF THE ABOVE SHALL BE AT THE CONTRACTOR'S EXPENSE.
- 3 ALL DISCONNECTS REQUIRED SHALL BE PROVIDED BY THE EC, U.N.O. SEE MECHANICAL & PLUMBING EQUIPMENT SCHEDULE(S) FOR EQUIPMENT DETAILS AND FOR DISCONNECTS FURNISHED BY OTHERS. REFER TO MANUFACTURER'S SPECIFICATIONS FOR MECHANICAL & PLUMBING EQUIPMENT CONNECTION DETAILS. COORDINATE WITH APPLICABLE TRADES.
- 4 PROVIDE EQUIPMENT GROUNDING CONDUCTOR IN ALL FEEDERS, SIZED IN ACCORDANCE WITH NEC ARTICLE 250.122. SEE SPECIFICATIONS.
- 5 ALL EXTERIOR ELECTRICAL EQUIPMENT AND DISCONNECT SWITCHES SHALL BE IN RATED NEMA 3R OR 4X ENCLOSURES. FINAL CONDUIT CONNECTIONS TO MECHANICAL EQUIPMENT SHALL BE MADE WITH LFMC. REFER TO ELECTRICAL DETAILS SHEETS(S) AND OWNER'S VENDOR FOR ADDITIONAL PHONE AND DATA ROUGH-IN REQUIREMENTS.
- 6 CONTRACTOR SHALL COORDINATE THE EXACT LOCATION OF ALL FLOOR BOXES AND POKE THROUGH WITH STRUCTURAL PLANS AND ARCHITECT PRIOR TO INSTALLATION. LOCATION SHALL BE COORDINATED TO AVOID STRUCTURAL ELEMENTS AND MATCH FURNITURE LOCATIONS.
- 7 ROUTE ALL OVERHEAD CONDUIT TIGHT TO UNDERSIDE OF ROOF DECK OR TRUSSES. CONDUITS SHALL RUN PARALLEL OR PERPENDICULAR TO BUILDING STRUCTURE.
- 8 OWNER HAS CONTRACTED WITH A SEPARATE LOW VOLTAGE CONTRACTOR OUTSIDE OF THIS CONTRACT FOR VOICEDATA, AV, BURGLAR ALARM, ACCESS CONTROL, VIDEO SURVEILLANCE & INTERCOM SYSTEMS.

ELECTRICAL PARTIAL PLATFORM POWER, DATA, & VOICE PLAN
SCALE: 1/8" = 1'-0"
NORTH



ELECTRICAL POWER, DATA, & VOICE PLAN
SCALE: 1/8" = 1'-0"
NORTH

The Bid and Contract documents shall be the Document to which these notes are attached. The Architect and Engineer assume no responsibility for any errors, omissions, or inaccuracies in the drawings or specifications. The drawings and specifications are intended to be used for any part or parts of the building or structure shown. Copyright © 2018 by SSC Engineering, Inc.

2017349 - BID/PERMIT SET - 09-12-18