

EL CHAPARRAL SUBDIVISION

STREET REHAB - 2019

BOONE COUNTY, MISSOURI

UTILITY CONTACTS

UTILITY LOCATES:
 MISSOURI ONE CALL, INC.
 1022B NORTHEAST DRIVE
 JEFFERSON CITY, MO 65109
 (800) 344-7483

WATER:
 ROGER BALLEW
 PUBLIC WATER SUPPLY DISTRICT #9
 391 NORTH RANGELINE ROAD
 COLUMBIA, MO 65202
 (573) 474-9521

SANITARY SEWER:
 VIRGIL FARNEN
 BOONE CO. REGIONAL SEWER DIST.
 114 NORTH SEVENTH STREET
 COLUMBIA, MO 65201
 (573) 443-2774

STORM SEWER:
 BOONE COUNTY ROAD & BRIDGE
 5551 HIGHWAY 63 SOUTH
 COLUMBIA, MO 65201
 (573) 449-8515

ELECTRIC:
 ANDREW PETRI
 BOONE ELECTRIC COOPERATIVE
 1413 RANGELINE ROAD
 COLUMBIA, MO 65201
 (573) 441-7243

GAS:
 BRAIN ROBINSON
 AMEREN UE
 2001 MAGUIRE BLVD.
 COLUMBIA, MO 65201
 (573) 876-3030

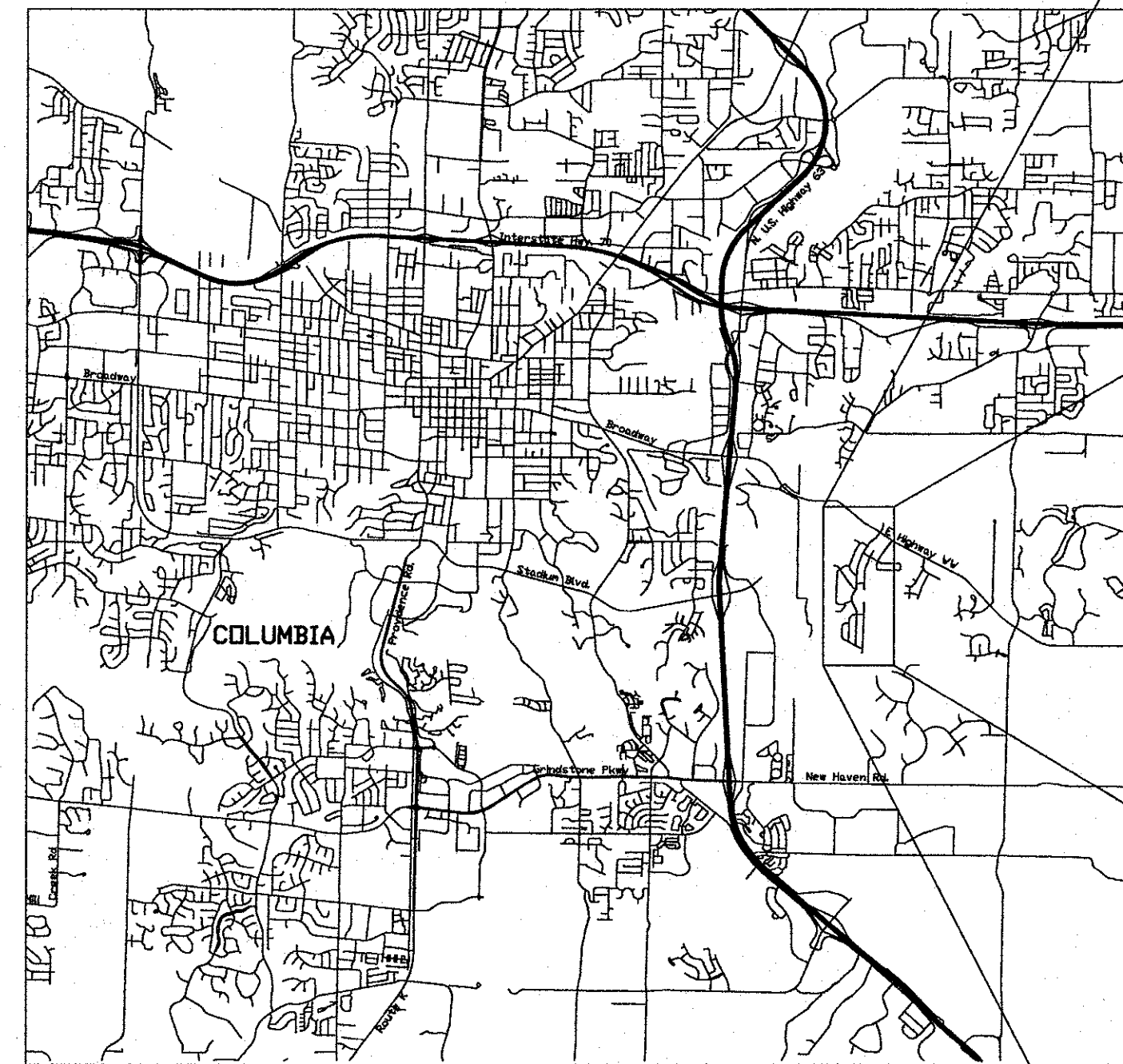
RICHA DAVIS
 AMEREN UE (FIELD OPERATIONS)
 2001 MAGUIRE BLVD.
 COLUMBIA, MO 65201
 (573) 310-4441

COMMUNICATIONS:
 TIM DISHMAN
 CENTURYLINK (SOUTH OF I-70)
 625 EAST CHERRY STREET
 COLUMBIA, MO 65201
 (573) 886-3605

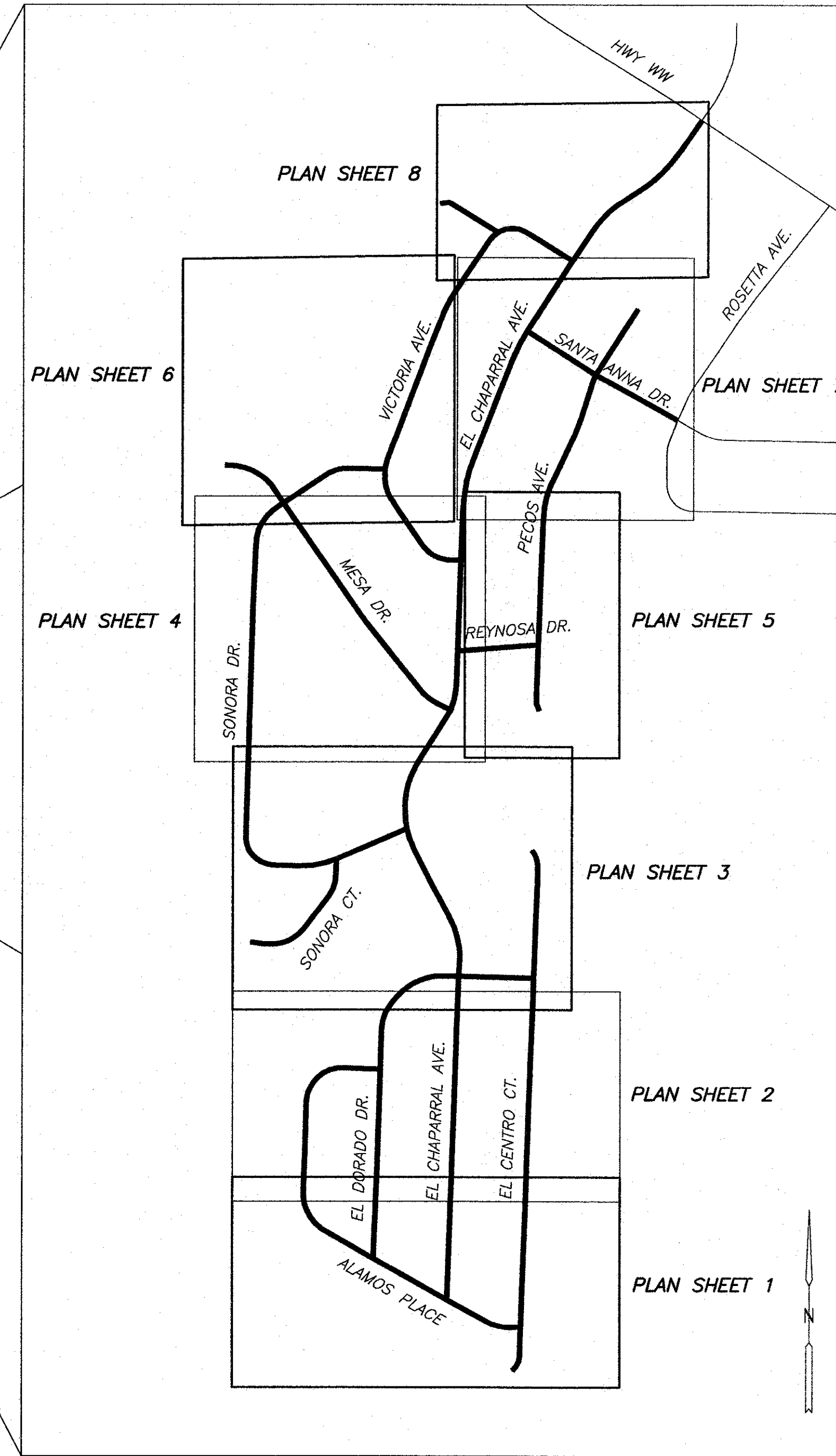
BOB BONER
 MEDACOM
 901 NORTH COLLEGE AVENUE
 COLUMBIA, MO 65202
 (573) 443-1536 EXT. 3779

MODOT:
 JOHN KUHLMAN, PERMIT SPECIALIST
 MISSOURI DEPT. OF TRANSPORTATION
 1511 MISSOURI BOULEVARD
 JEFFERSON CITY, MO 65102
 (573)522-6806

LEGEND	
⊕	BENCHMARK
○	PROPERTY IRON
●	UTILITY POLE
● _{PP}	POWER POLE
☆	STREET LIGHT POLE
~	GUY WIRE ANCHOR
□	TELEPHONE PEDESTAL
□ _{FO}	FIBER OPTIC PEDESTAL
□ _{TV}	CABLE TV PEDESTAL
⊗	GAS VALVE
⊗	WATER VALVE
⊗	FIRE HYDRANT
⊗	WATER METER
⊗	SANITARY MANHOLE
⊗	SANITARY CLEANOUT
✉	MAIL BOX
△	SIGN
⊙	WELL
○	DECIDUOUS TREE
✳	CONIFEROUS TREE
⊕	BUSH OR SHRUB
---	OVERHEAD ELECTRIC
---	UNDERGROUND ELECTRIC
T	TELEPHONE
FO	FIBER OPTIC
TV	CABLE TV
G	GAS
W	WATER
S	SANITARY SEWER
FM	SANITARY FORCEMAIN
---	TREE LINE
---	FLOWLINE
○-○-○	CHAIN LINK FENCE
○-○-○	WOODEN FENCE
---	FIELD FENCE



LOCATION MAP
NOT TO SCALE



AREA MAP
NOT TO SCALE

GENERAL NOTES:

- ALL CONSTRUCTION SHALL CONFORM TO THE CURRENT EDITION OF CHAPTER II OF THE ROAD, BRIDGE & RIGHT OF WAY REGULATIONS OF BOONE COUNTY, MISSOURI.
- CONSTRUCTION ACTIVITIES ASSOCIATED WITH THESE PLANS SHALL COMPLY WITH CURRENT OSHA REGULATIONS AND REQUIRED SAFETY MEASURES.
- LOT LINES, BUILDING SETBACK LINES AND EASEMENT LINES ARE SHOWN FOR GENERAL INFORMATION PURPOSES ONLY. REFER TO THE RECORDED PLATS FOR DETAILED DIMENSIONS AND INFORMATION.
- THE CONTRACTOR SHALL PROTECT PERMANENT SURVEY MONUMENTS. SURVEY MONUMENTS REMOVED DURING CONSTRUCTION SHALL BE RESTORED AT THE CONTRACTOR'S EXPENSE BY A LICENSED SURVEYOR REGISTERED IN THE STATE OF MISSOURI.
- SURVEY CONTROL POINTS AND FINISHED GRADE CONSTRUCTION POINTS GIVEN IN THESE PLANS WERE NOT VERIFIED WITH GPS AND MAY NOT BE TRUE STATE PLAN COORDINATES. QUESTIONS REGARDING THE SURVEY POINTS CAN BE DIRECTED TO ENGINEER OR COUNTY SURVEYOR.
- A MAJORITY OF THE NOTES ON THE SITE PLANS ARE TYPICAL IN NATURE AND ALL WORK ASSOCIATED WITH THE NOTES WERE NOT GIVEN INDIVIDUAL LEADER CALL OUTS.

TRAFFIC CONTROL NOTES:

- THE CONTRACTOR IS RESPONSIBLE FOR ALL TRAFFIC CONTROL DURING CONSTRUCTION. THE CURRENT EDITION OF THE MANUAL ON UNIFORM TRAFFIC CONTROL DEVICES FOR STREETS AND HIGHWAYS (MUTCD) SHALL BE FOLLOWED FOR TEMPORARY TRAFFIC CONTROL OPERATIONS AND DEVICES.
- CONTRACTOR SHALL NOTIFY BOONE COUNTY RESOURCE MANAGEMENT A MINIMUM OF 48 HOURS IN ADVANCE OF ROAD OR LANE CLOSURES. SEE SPECIAL PROVISIONS FOR MORE DETAILS.

EROSION CONTROL NOTES:

- EROSION CONTROL IS THE SOLE RESPONSIBILITY OF THE CONTRACTOR. INLET PROTECTION SHALL BE IN PLACE PRIOR TO ANY REMOVAL OR EXCAVATION WORK. SEE SPECIAL PROVISIONS FOR MORE DETAILS.

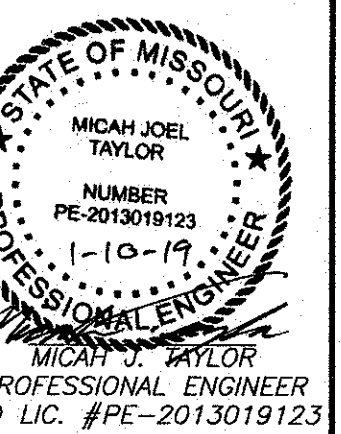
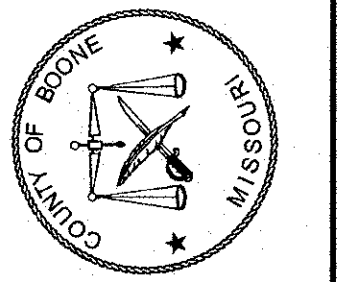
UTILITY COORDINATION NOTES:

- EXISTING UTILITIES ARE SHOWN FOR REFERENCE ONLY. SOME UTILITIES MAY NOT HAVE BEEN LOCATED IN ALL AREAS DURING THE FIELD SURVEY. THE CONTRACTOR SHALL BE RESPONSIBLE CALLING IN LOCATE REQUESTS AND EXCAVATING WITH CAUTION AROUND UTILITIES. CONTACT ENGINEER WITH ANY DISCREPANCIES.
- BOONE COUNTY HAS BEEN COORDINATING WITH ALL UTILITIES IN AN EFFORT TO HAVE ALL ROAD CROSSINGS RELOCATED TO A MINIMUM DEPTH OF 24" FROM EXISTING SURFACE GRADE PRIOR TO THE START OF CONSTRUCTION. THE UTILITIES WILL BE WORKING TO MEET THIS EFFORT. IF CONFLICTS OCCUR DURING CONSTRUCTION, THE CONTRACTOR SHALL BE RESPONSIBLE FOR COORDINATING WITH THE UTILITY TO HAVE THE CONFLICT RESOLVED.
- BOONE COUNTY REGIONAL SEWER DISTRICT WILL BE DOING MANHOLE MAINTENANCE ON ALL MANHOLES CURRENTLY SET WITHIN THE ROADWAY PAVEMENT. SEWER DISTRICT WILL CONDUCT WORK AHEAD OF REHAB PROJECT. CONTRACTOR SHALL CONTACT AND COORDINATE WITH THE SEWER DISTRICT TO PREVENT CONFLICTS.

INDEX OF SHEETS	
SHEET DESCRIPTION	SHEET NO.
COVER	1
PHASING PLAN	2
PLAN SHEET 1	3
PLAN SHEET 2	4
ALAMOS STORMWATER PLAN	5
EL DORADO STORMWATER PLAN	6
PLAN SHEET 3	7
EL CHAPARRAL LOW SPOT PLAN	8
CONCRETE FLUME PLAN & DETAILS	9
EL CHAPARRAL AVE. SEWER LATERAL PLAN	10
PLAN SHEET 4	11
SONORA STORMWATER PLAN	12
PLAN SHEET 5	13
PECOS CT. - SOUTH STORMWATER PLAN	14
PLAN SHEET 6	15
PLAN SHEET 7	16
PLAN SHEET 8	17
EL CHAPARRAL AVE. ENTRANCE PLAN	18
EL CHAPARRAL AVE. ENTRANCE GRADING PLAN	19
EL CHAPARRAL AVE. ENTRANCE STRIPING PLAN	20
EL CHAPARRAL AVE. ENTRANCE DETAILS	21
DETAILS	22
STORMWATER INLET DETAILS	23
STORMWATER DETAILS	24

STREET REHAB - 2019
EL CHAPARRAL SUBDIVISION
COVER

Boone County Resource
Management Department
Engineering Division
 Phone: 573-886-4480
 Fax: 573-886-4540
 801 E. Walnut, Room 315
 Columbia, Missouri 65201



REVISIONS	
DATE	DESCRIPTION

DATE
JAN. 2019

JOB NUMBER

SCALE

SHEET

1