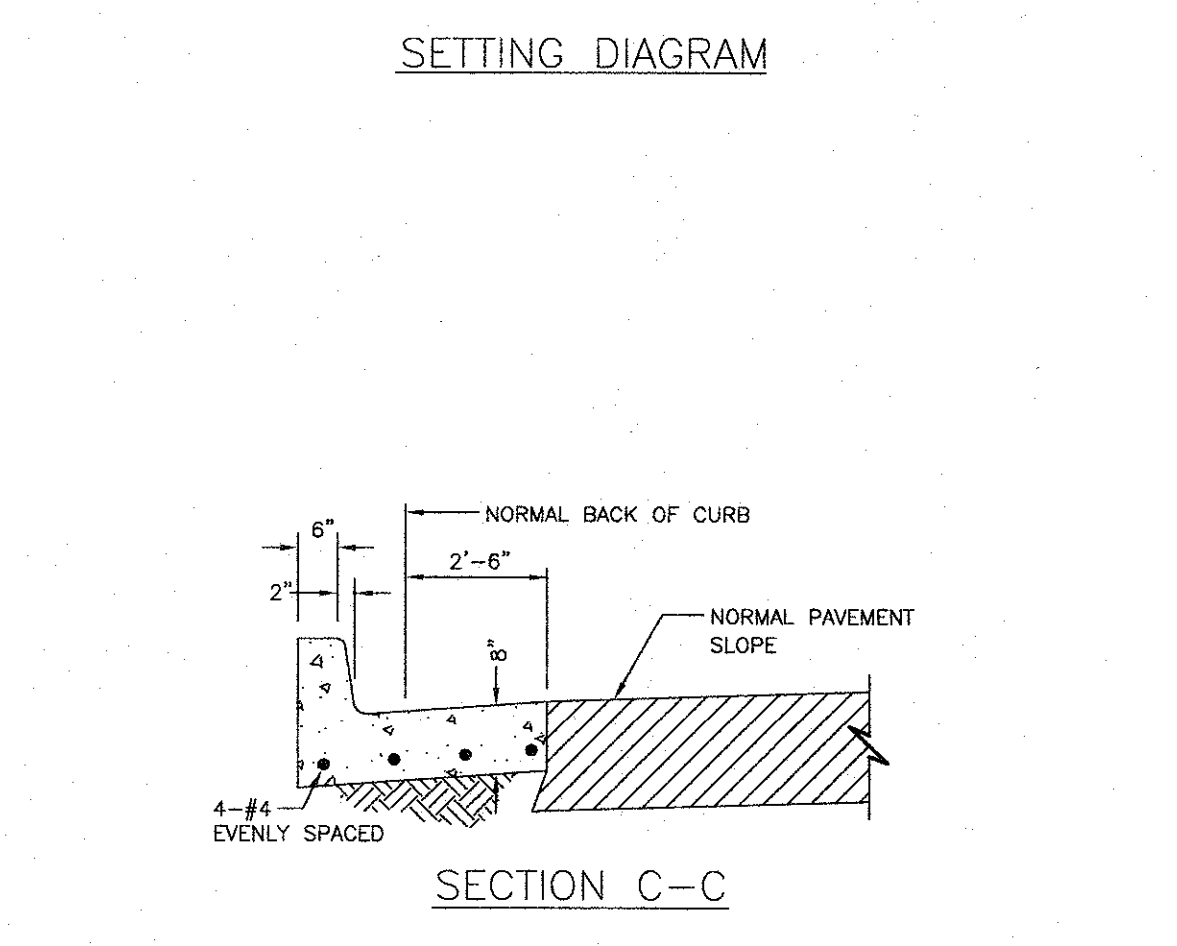
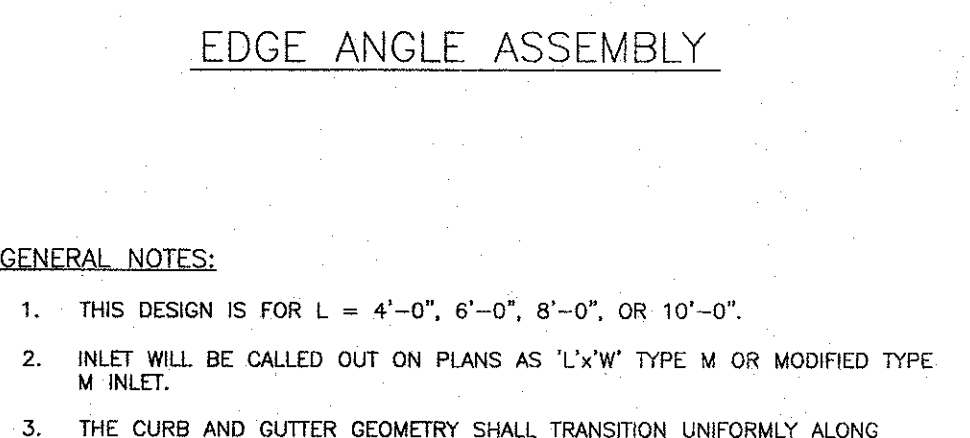
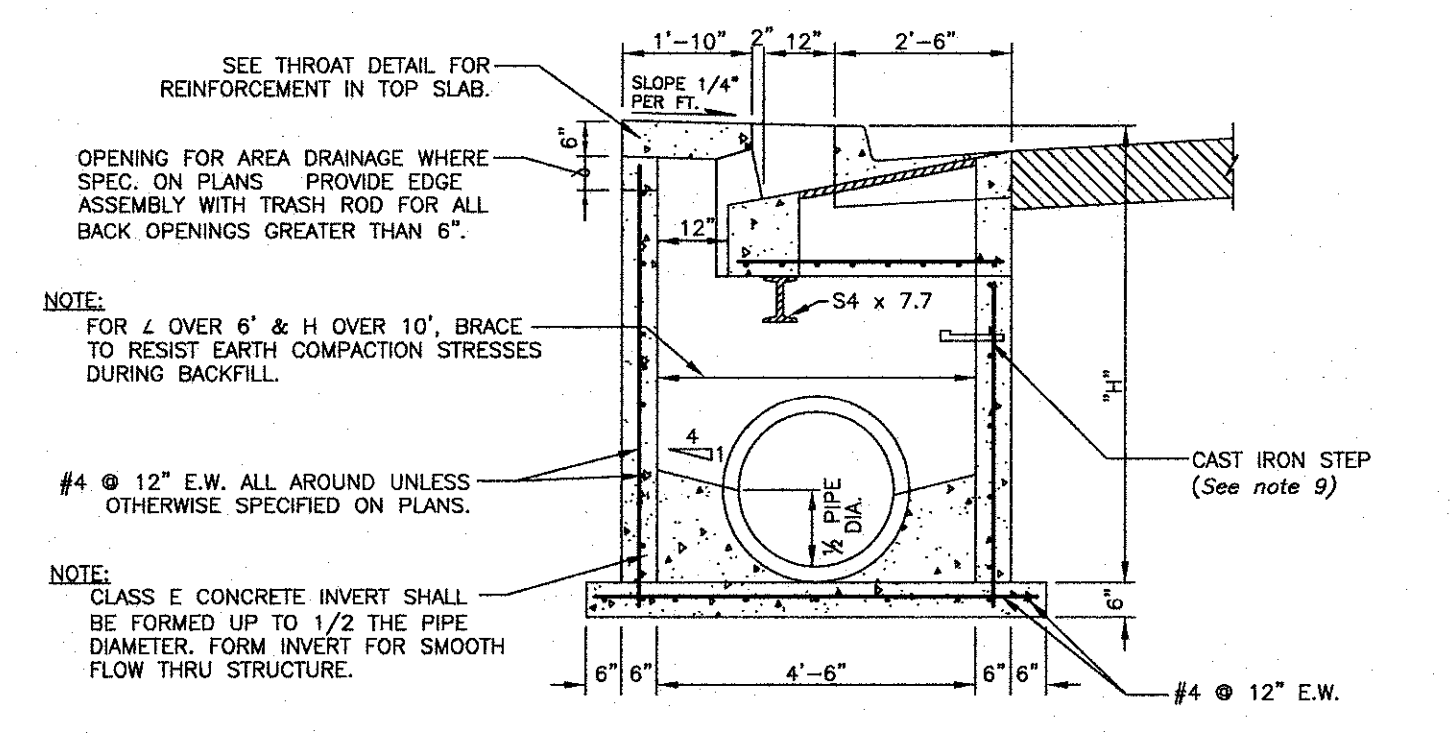
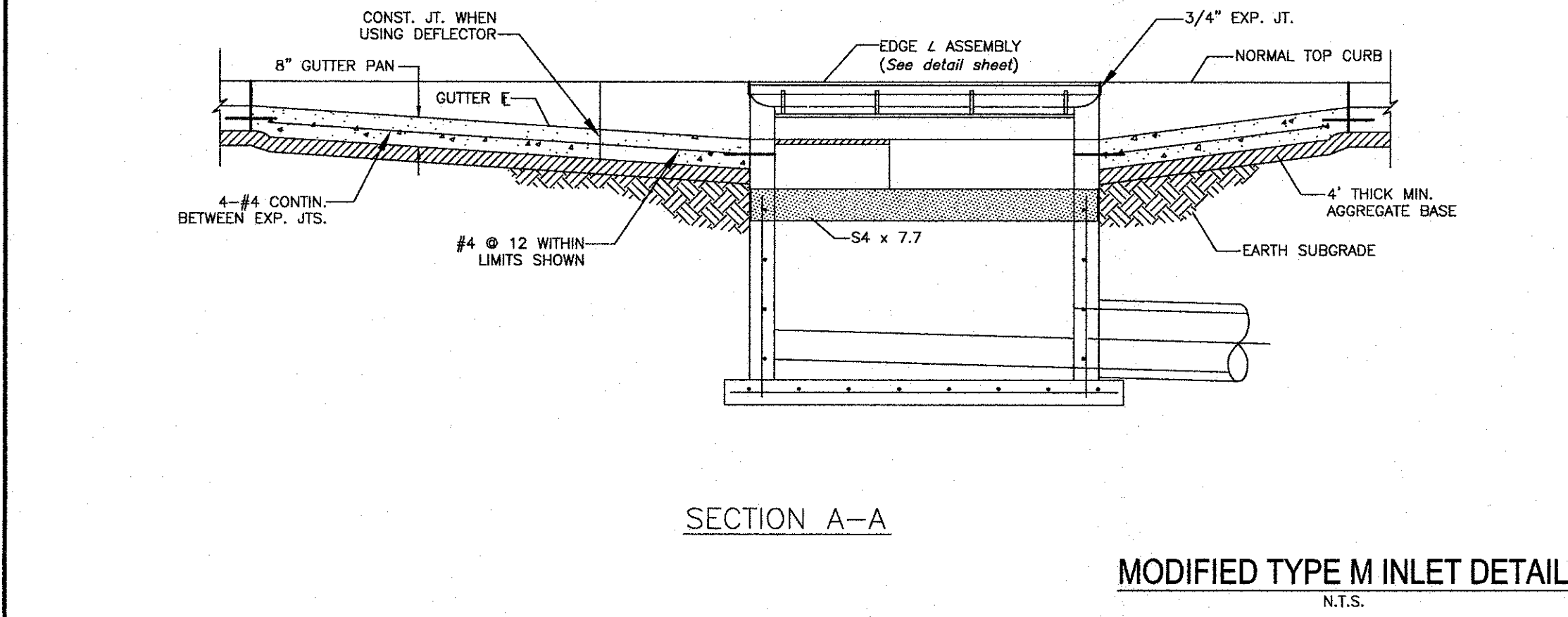
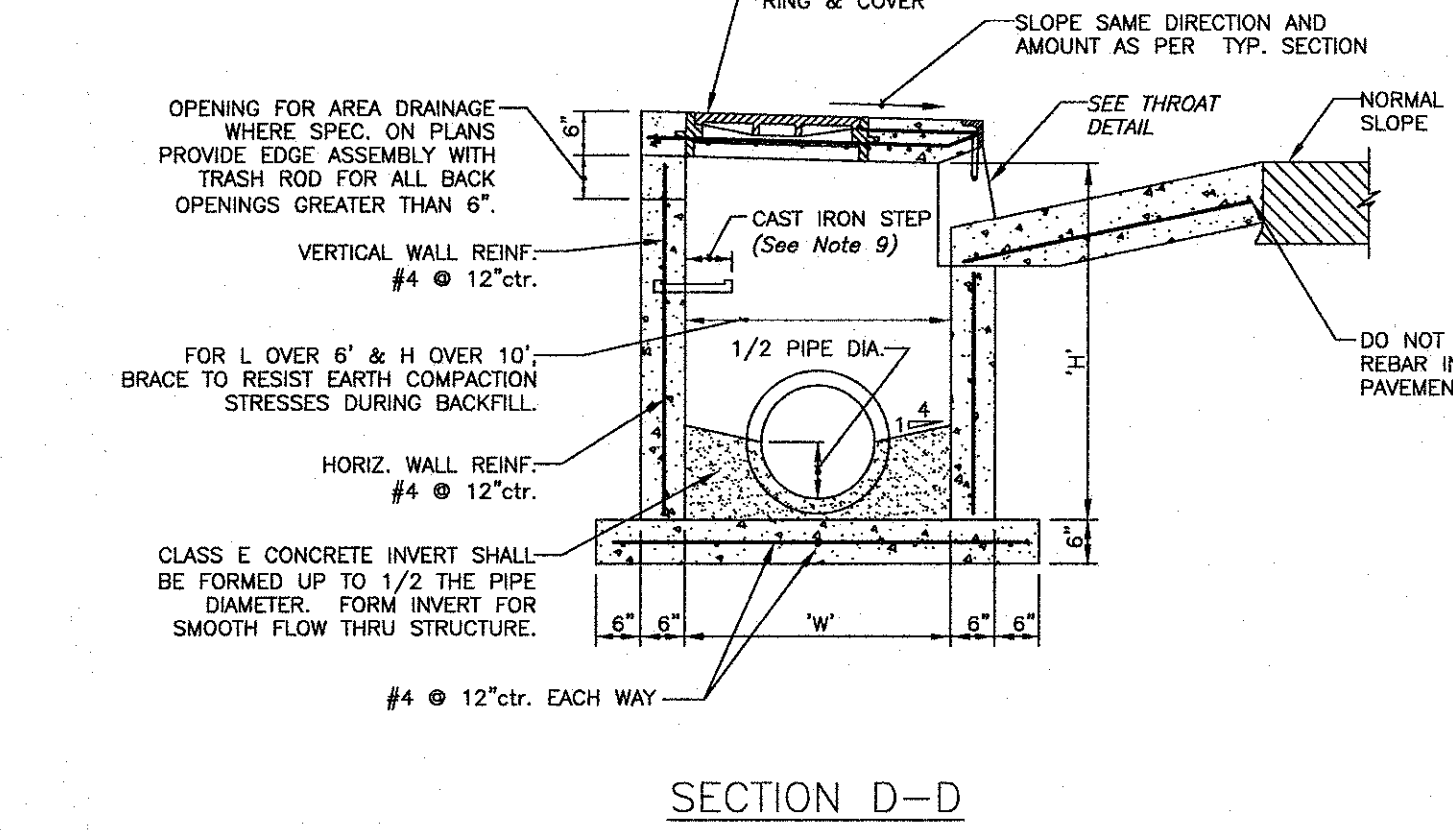
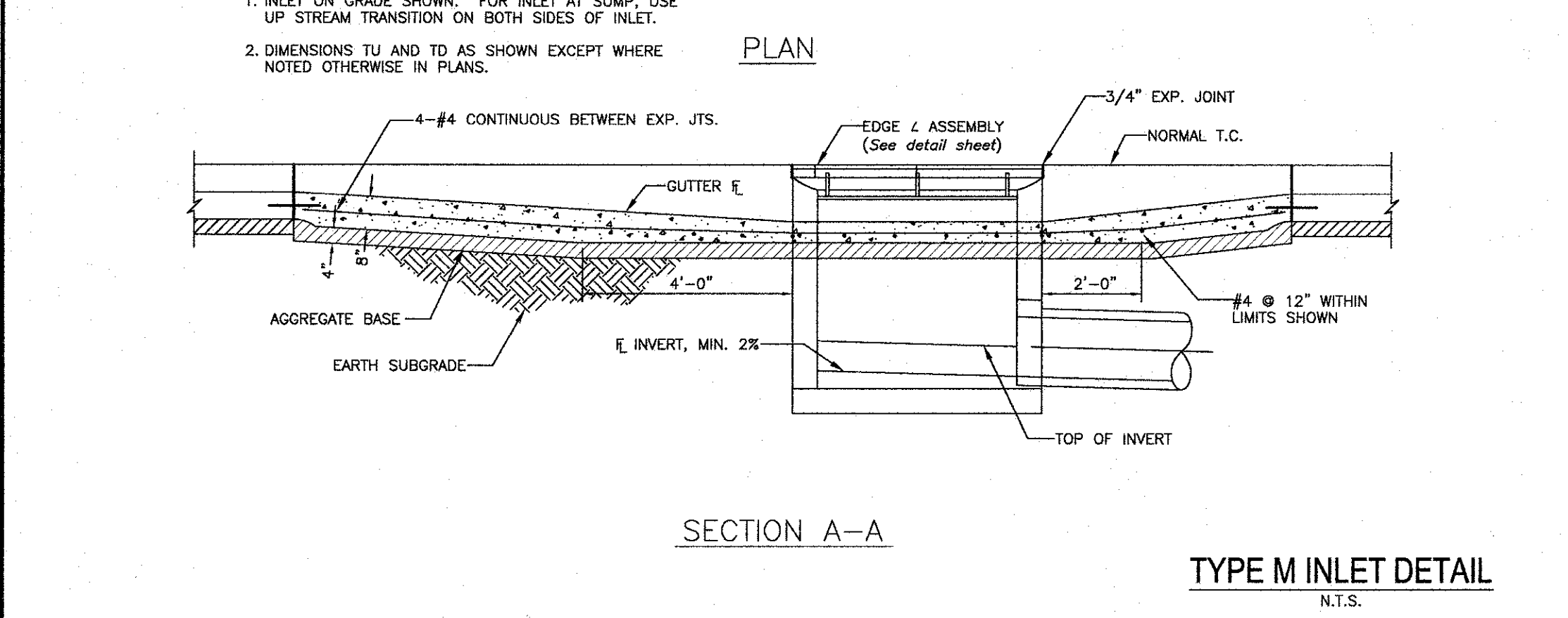
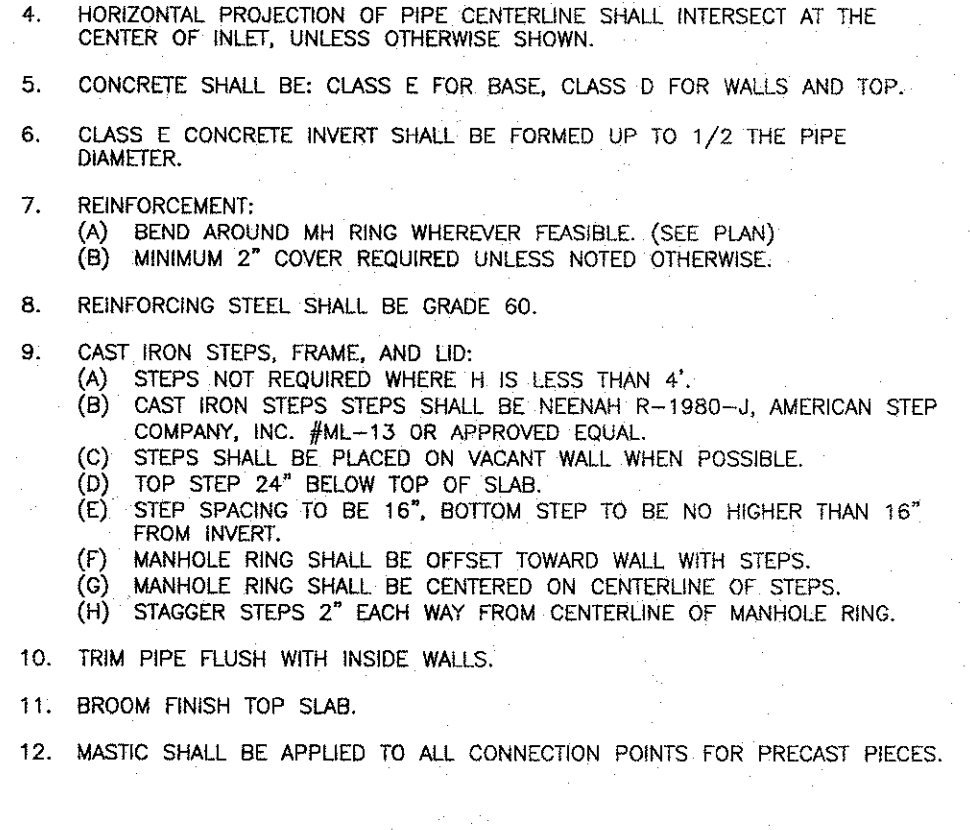
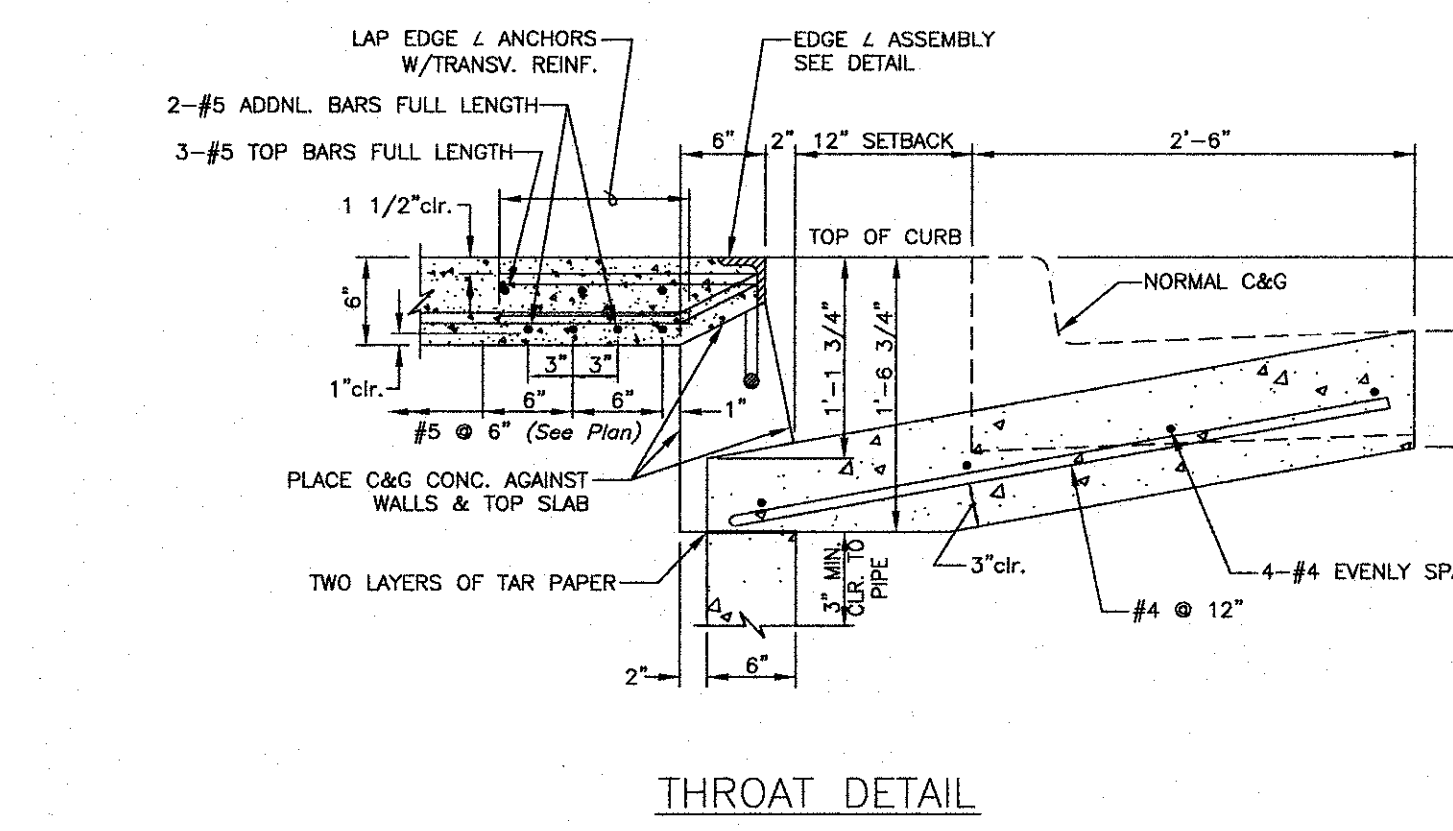
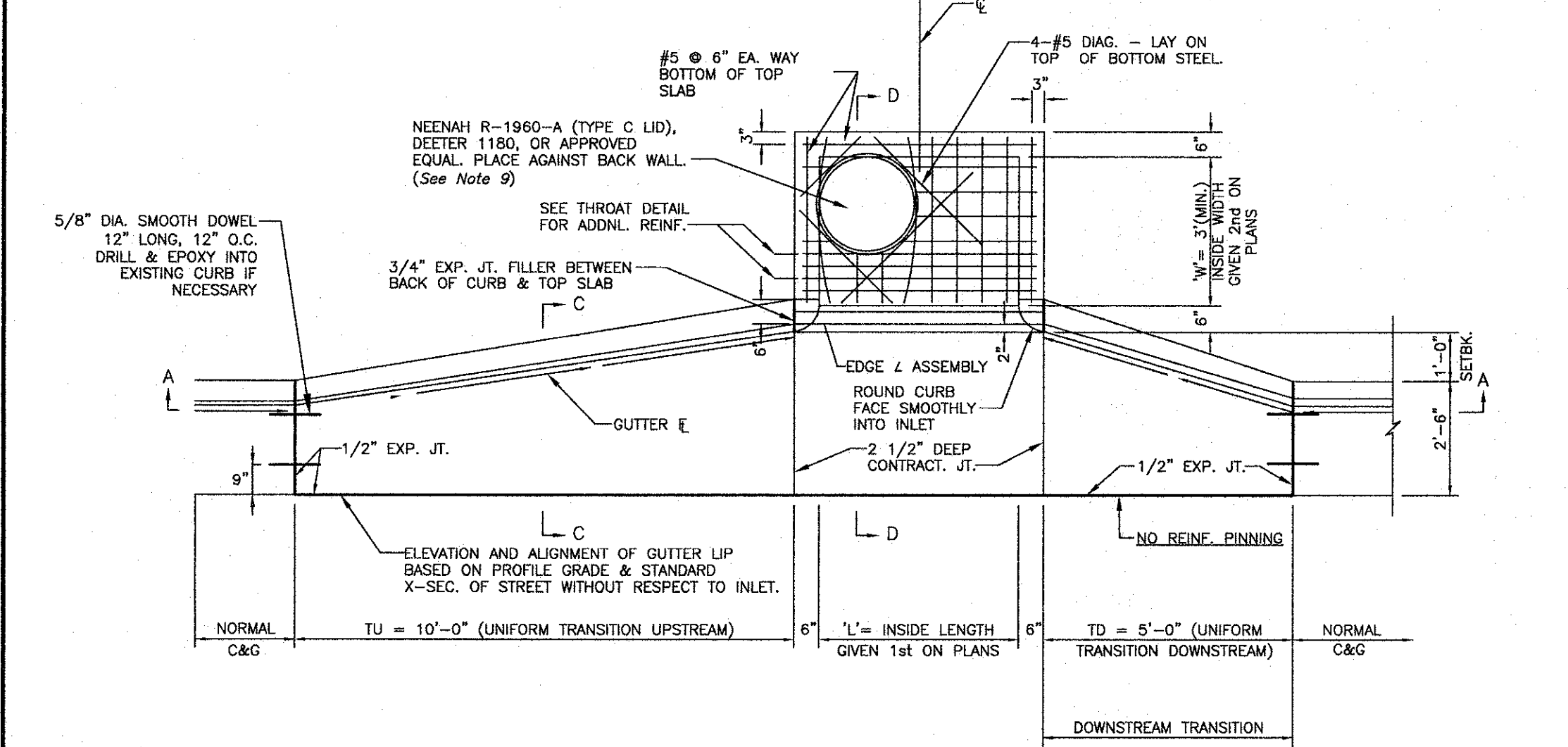


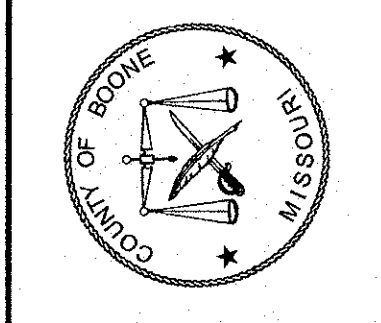
- NOTES:
- STRUCTURAL STEEL SHALL BE GRADE A-36
  - EXPOSED STEEL SURFACES TO BE FINISHED SMOOTH.
  - HOT DIP GALVANIZE ASSEMBLY, EXCEPT THAT GALV. NOT REQUIRED ON DEFORMED ANCHORS. CHIPPING NOT REQUIRED ON ANCHOR WELDS.
  - NAILS OR BOLTS USED TO ANCHOR ANGLE ASSEMBLY TO FORM SHALL BE REMOVED OR CUT OFF FLUSH WITH SURFACE OF ANGLE.
  - DIMENSION "L" REPRESENTS THE INSIDE INLET DIMENSION.



- GENERAL NOTES:
- THIS DESIGN IS FOR L = 4'-0", 6'-0", 8'-0", OR 10'-0".
  - INLET WILL BE CALLED OUT ON PLANS AS "L"xW" TYPE M OR MODIFIED TYPE M INLET.
  - THE CURB AND GUTTER GEOMETRY SHALL TRANSITION UNIFORMLY ALONG LENGTH TU & TD. FORM CURB FACE WITH FLEXIBLE FORM.
  - HORIZONTAL PROJECTION OF PIPE CENTERLINE SHALL INTERSECT AT THE CENTER OF INLET, UNLESS OTHERWISE SHOWN.
  - CONCRETE SHALL BE: CLASS E FOR BASE, CLASS D FOR WALLS AND TOP.
  - CLASS E CONCRETE INVERT SHALL BE FORMED UP TO 1/2 THE PIPE DIAMETER.
  - REINFORCEMENT: (A) BEND AROUND MH RING WHEREVER FEASIBLE. (SEE PLAN) (B) MINIMUM 2" COVER REQUIRED UNLESS NOTED OTHERWISE.
  - REINFORCING STEEL SHALL BE GRADE 60.
  - CAST IRON STEPS, FRAME, AND LID: (A) STEPS NOT REQUIRED WHERE H IS LESS THAN 4'. (B) CAST IRON STEPS SHALL BE NEENAH R-1980-J, AMERICAN STEP COMPANY, INC. #ML-13 OR APPROVED EQUAL. (C) STEPS SHALL BE PLACED ON VACANT WALL WHEN POSSIBLE. (D) TOP STEP 24" BELOW TOP OF SLAB. (E) STEP SPACING TO BE NO HIGHER THAN 16" FROM INVERT. (F) MANHOLE RING SHALL BE OFFSET TOWARD WALL WITH STEPS. (G) MANHOLE RING SHALL BE CENTERED ON CENTERLINE OF STEPS. (H) STAGGER STEPS 2" EACH WAY FROM CENTERLINE OF MANHOLE RING.
  - TRIM PIPE FLUSH WITH INSIDE WALLS.
  - BROOM FINISH TOP SLAB.
  - MASTIC SHALL BE APPLIED TO ALL CONNECTION POINTS FOR PRECAST PIECES.



TYPE M & MODIFIED TYPE M INLET DETAILS  
N.T.S.



REVISIONS	
NO.	DATE

DATE  
JAN. 2019

JOB NUMBER

SCALE

SHEET